

Supplementary material

Supplementary Table 1. Clinicopathological information of the PRAD patients sets in this study.

Supplemental Figure 1. A heatmap of the DEGs in GSE124272.

Supplemental Figure 2. A heatmap of the DEGs in TCGA.

Supplemental Figure 3. An example dendrogram of WCGNA genes with differential expression.

Sample dendrograms in GSE150408 (A) and TCGA (B) are presented.

Supplemental Figure 4. Single sample GSEA (ssGSEA) analysis showing the relative pathways involved with MXD3.

(A-B) ssGSEA analysis showing the relative signature in low back pain patients in GSE150408 (A) and GSE124272 (B).

(C-D) ssGSEA analysis showing the relative signature in PRAD patients in TCGA (C) and GSE70768 (D).

Supplemental Figure 5. Expression pattern validation and diagnostic value.

(A) ROC curve of MADCAM1, MXD3 in GSE150408.

(B) ROC curve of the shared diagnostic genes in GSE70768.

Supplementary Material

Supplementary Table1 | Clinicopathological information of the PRAD patient sets in this study.

| Baseline characteristics | Value* |
|--------------------------|--------------|
| Age (years) | 54.6 (44-66) |
| Gender | |
| Male | 11 (100) |
| Smoking status | |
| Yes | 4 (36) |
| No | 7 (64) |
| Alcohol history | |

Yes 7 (64)

No 4 (73)

Grade

G1 5 (45)

G2 3 (27)

G3 2 (18)

G4 1 (10)

GX 0

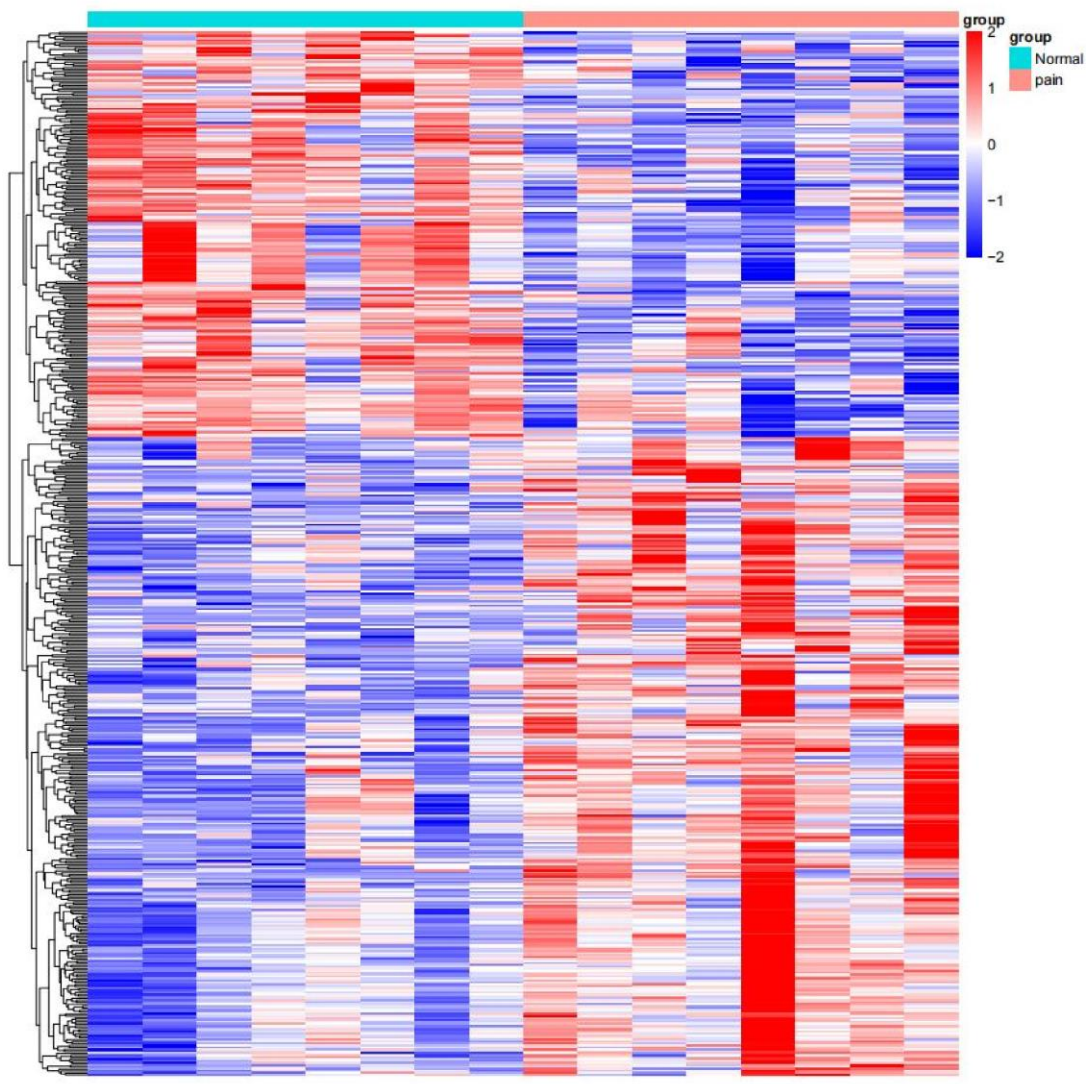
Stage

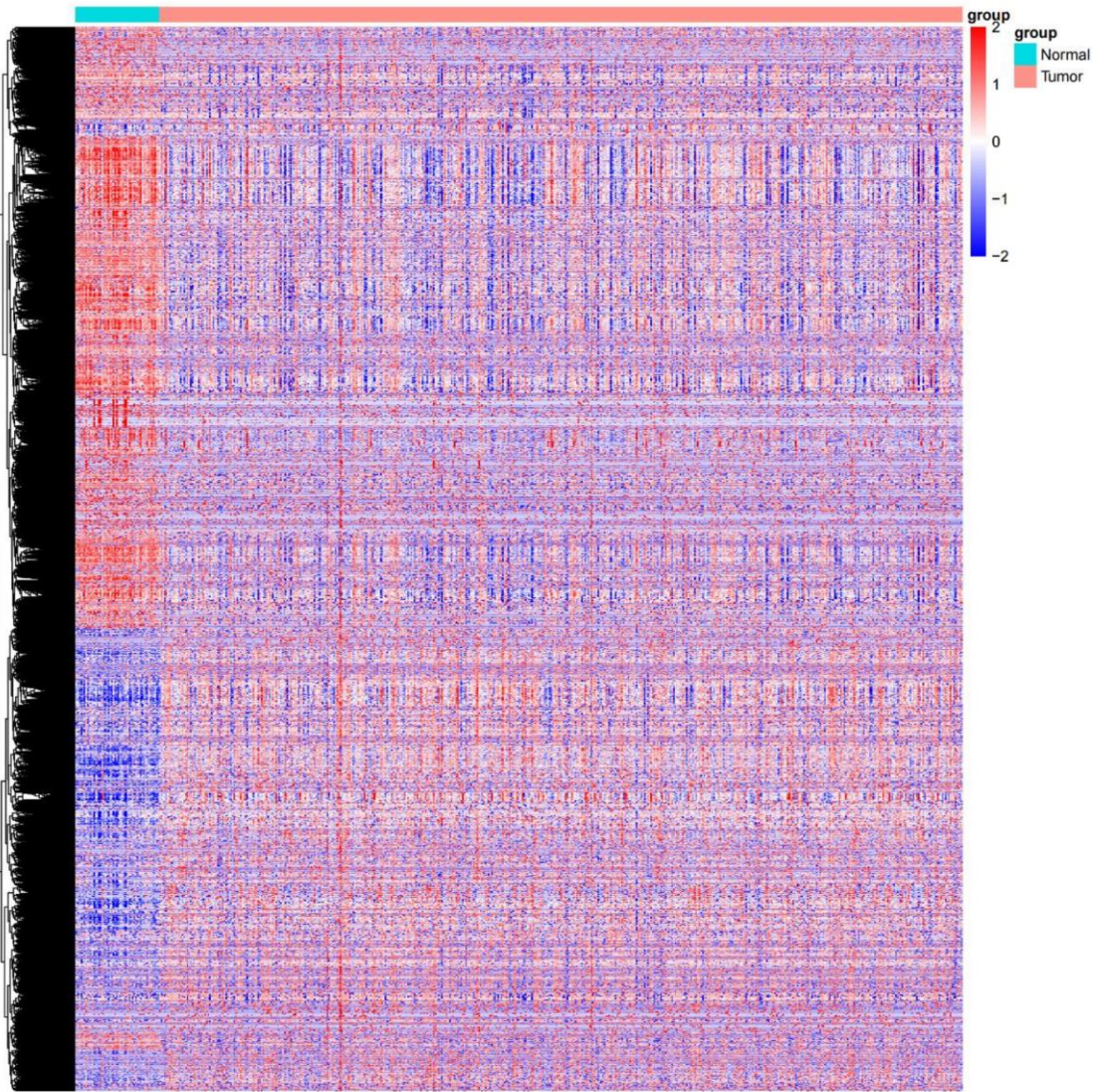
I-II 6 (55)

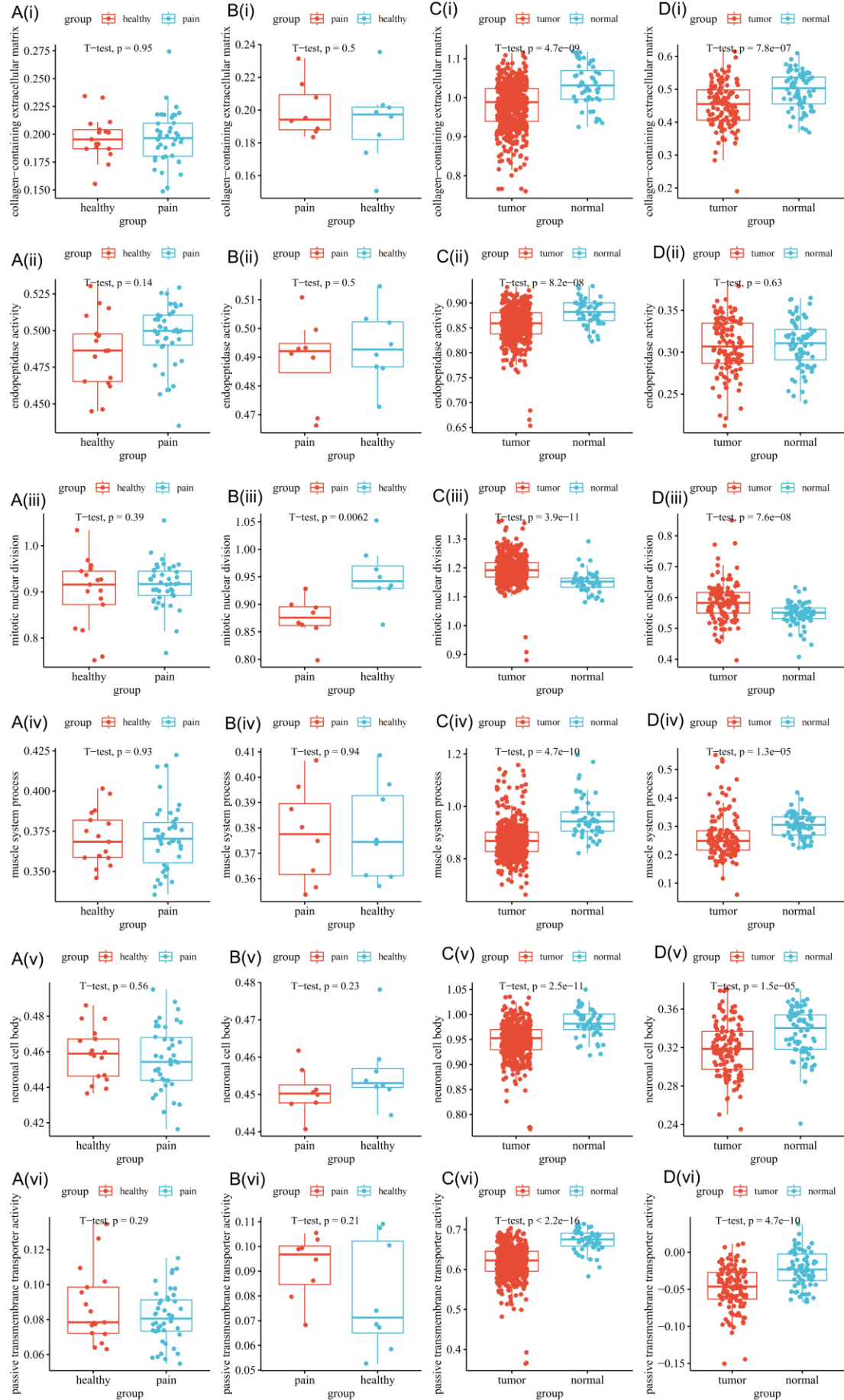
III-IV 3 (27)

unknow 2 (18)

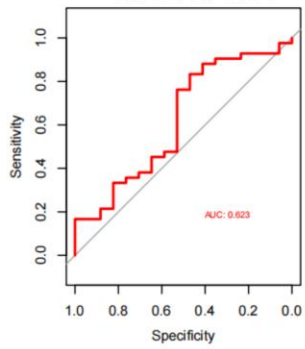
***values are expressed as median (range) or n (%)**



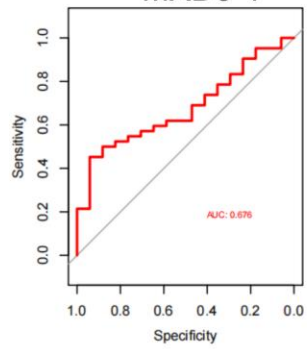




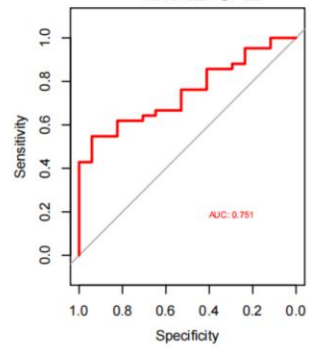
A GSE150408
MADCAM1



MXD3-1

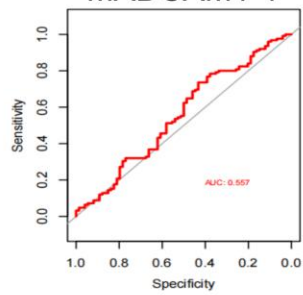


MXD3-2

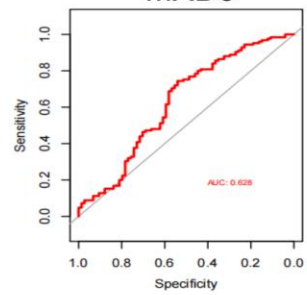


B GSE70768

MADCAM1-1



MXD3



MADCAM1-2

