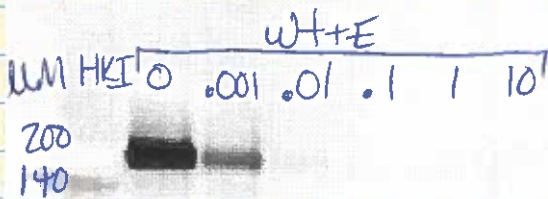
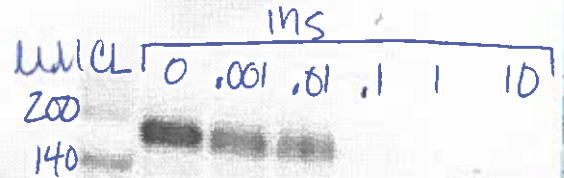
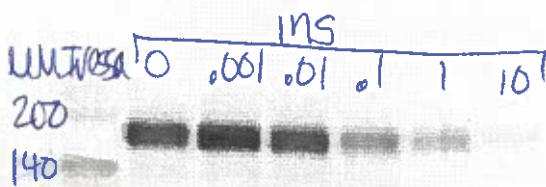
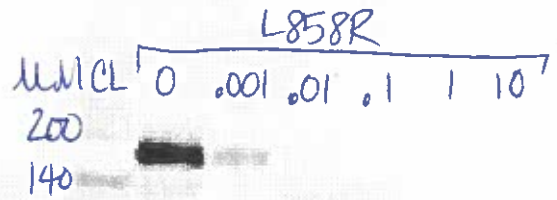
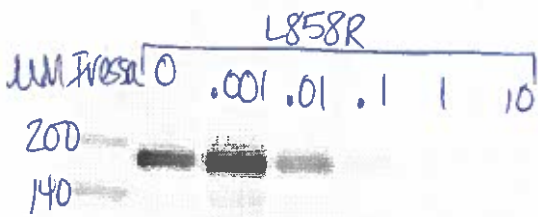
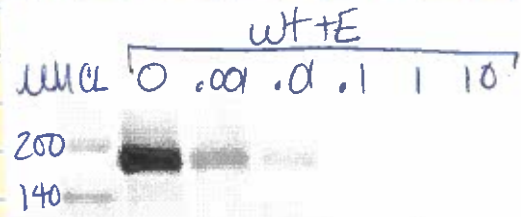
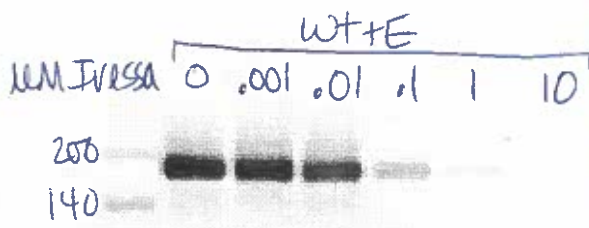
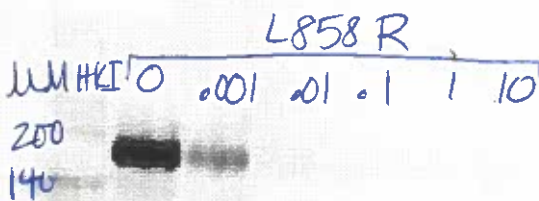


③ Which Inhibitor/CI is more effective x EGFR Y1068 W



looks great
 wt+E is clearly less sensitive to
 Inhibitor than L858R, & Ins is
 less sensitive than that
 CI is 10x more effective than Inhibitor
 for wt+E & L858R, & 100x more
 effective than Inhibitor &
 HKI appears to be equally effective
 for all 3 cell types



these results more consistent
 colony data than 526#3
 these results roughly correlate
 with 54#5 & 54#8 colony
 for Inhibitor & CI ± 1 log
 HKI is extremely effective for
 EGFR auto-phosphorylation, but the
 doesn't correlate with colony data
 (see 625#1) - cpd stability is
 over 2wk assay?
 see 625#1 anti-actin

