

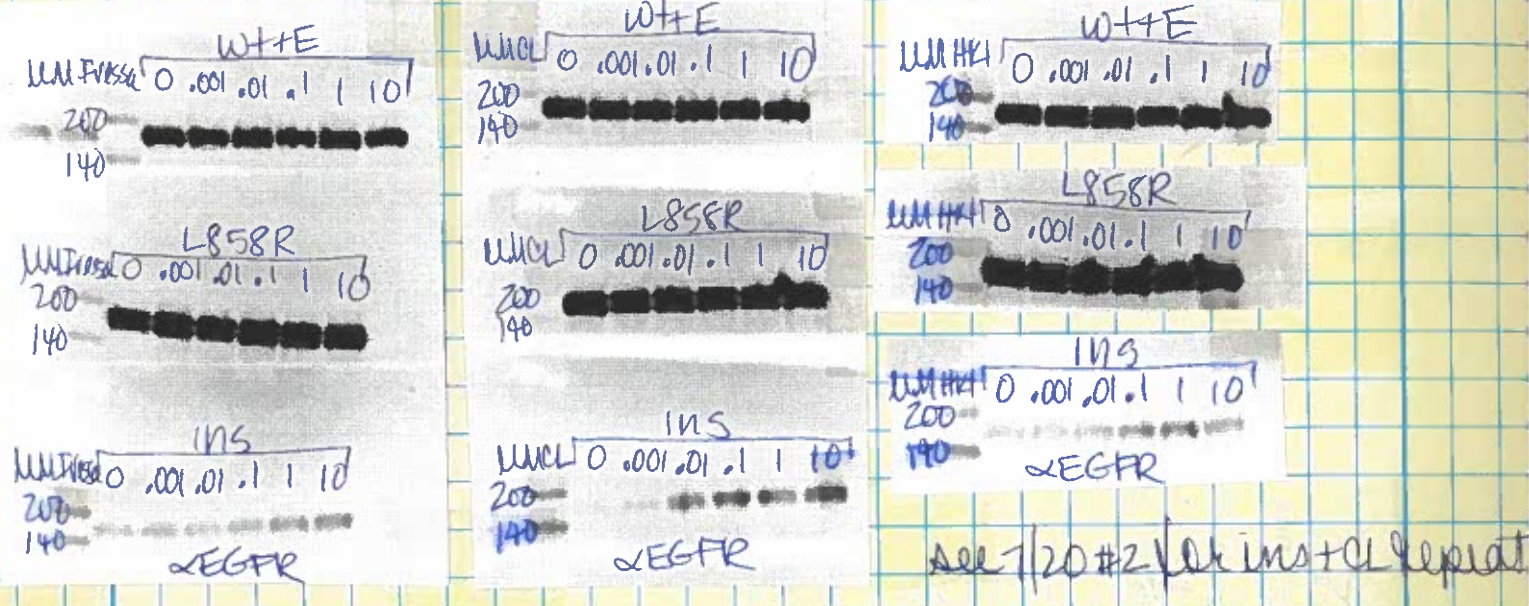
7/8/05

① Why is  $\alpha$ EGFR w/ or drug dose response

see 7/6 #3 for  $\alpha$ EGFR Y1868

see 7/6 #4 for  $\alpha$ EGFR

EGFR levels all the same; some of inspc sample may have floated out of well



7/12/05

① Paper summary of ins mutation patients w/ treatment

Reference	Response to treatment	Reference	Agent	Not
<b>untreated patients</b>				
<b>Treated patients</b>				
V770-772 ins	Shigematsu JNCI 2005 S768-V769 SV Ains	Stable disease	Eberhard et al Tarceva	w/ch
H774 ins	Shigematsu JNCI 2005 M766-A767 AIns	Stable disease	Eberhard et al Tarceva	w/ch
G771 ins	Shigematsu JNCI 2005 D770_N771 ins SVD	Stable disease	Sequist and Lynch Tarceva	unpublished
V770-771 ins	Shigematsu JNCI 2005			
V774ins, H775Y	Shigematsu JNCI 2005			
I774-775 ins	Shigematsu JNCI 2005			
H774-776 ins	Shigematsu JNCI 2005			
V775-776 ins	Shigematsu JNCI 2005			
_762insEAFQ	Huang CCR 2004			
58_D770dup	Huang CCR 2004			
_762insEAFQ	Kosaka CR 2004			
V_S768insTLA	Kosaka CR 2004			
V_D770insASV	Kosaka CR 2004			