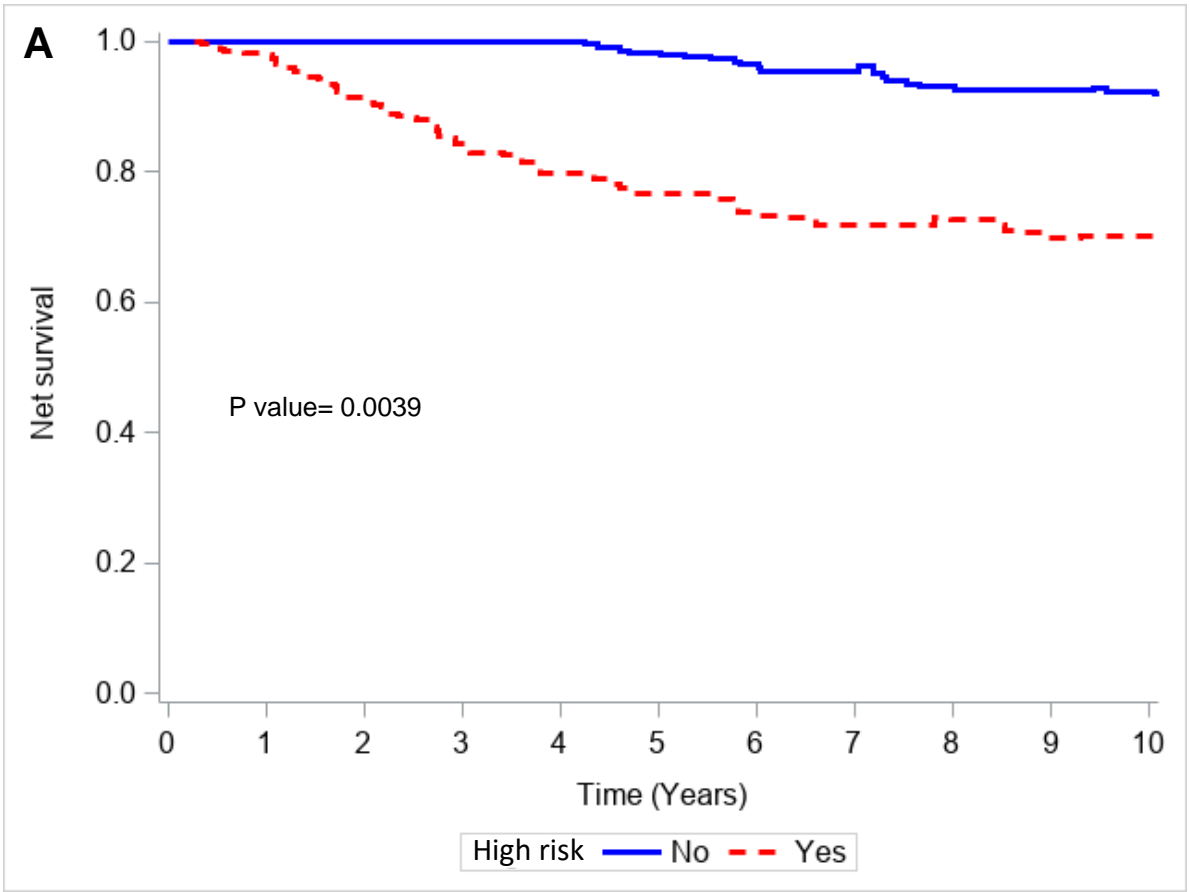
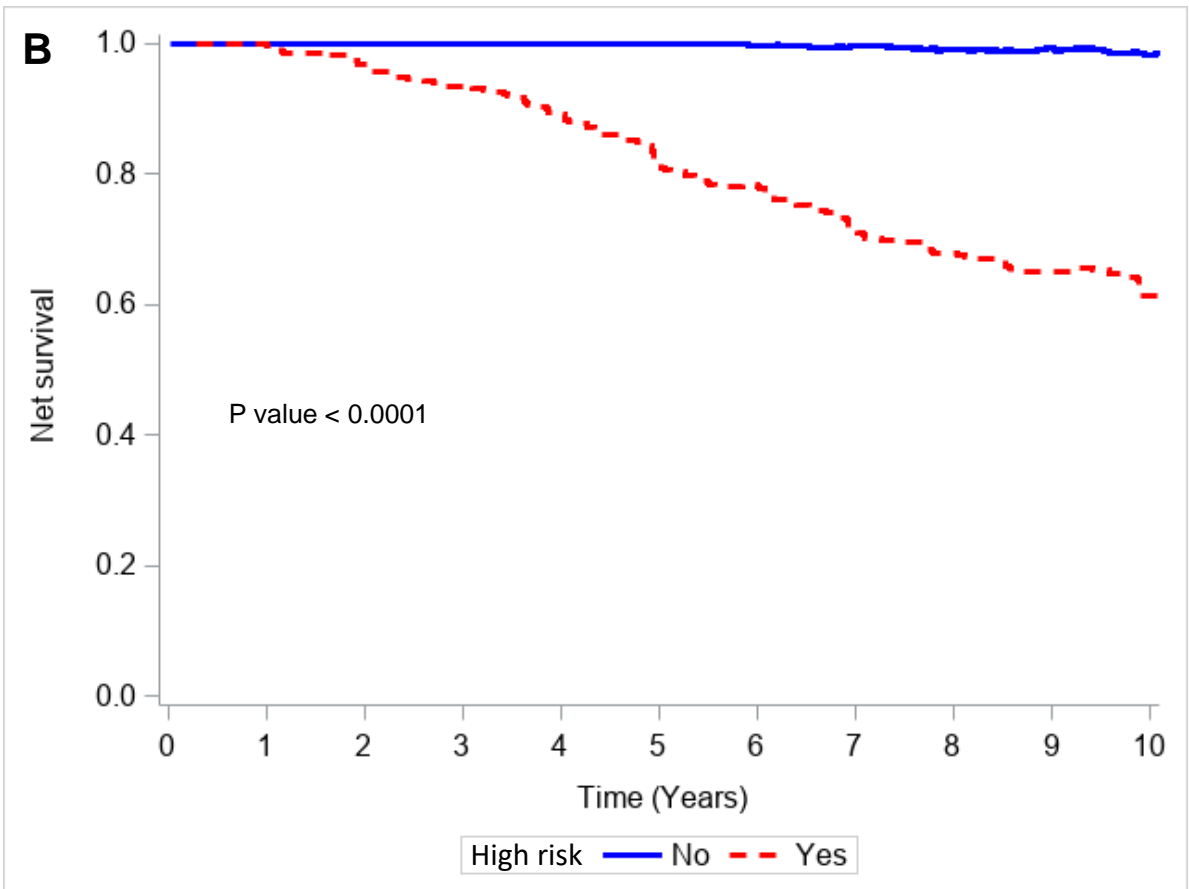


Supplemental Figure 2



net survival	High risk (OlympiA criteria)	
	Yes (N=211)	No (N=169)
1-year OS	98.3% [95.8 – 100]	100%
2-year OS	91.1% [86.6 – 95.9]	100%
3-year OS	84.3% [78.7 – 90.3]	100%
5-year OS	76.6% [69.5 – 84.3]	98.2% [94.8 – 100]
10-year OS	72.1% [62.9 – 82.8]	92.8% [86.2 – 99.8]



net survival	High risk (OlympiA criteria)	
	Yes (N=283)	No (N=2820)
1-year OS	100%	100%
2-year OS	97 % [94.3 – 99.8]	100%
3-year OS	93.6% [90 – 97.4]	100%
5-year OS	82.4% [77– 88.1]	100%
10-year OS	61.5% [53.9 – 70.1]	98.4% [96.2 – 100]