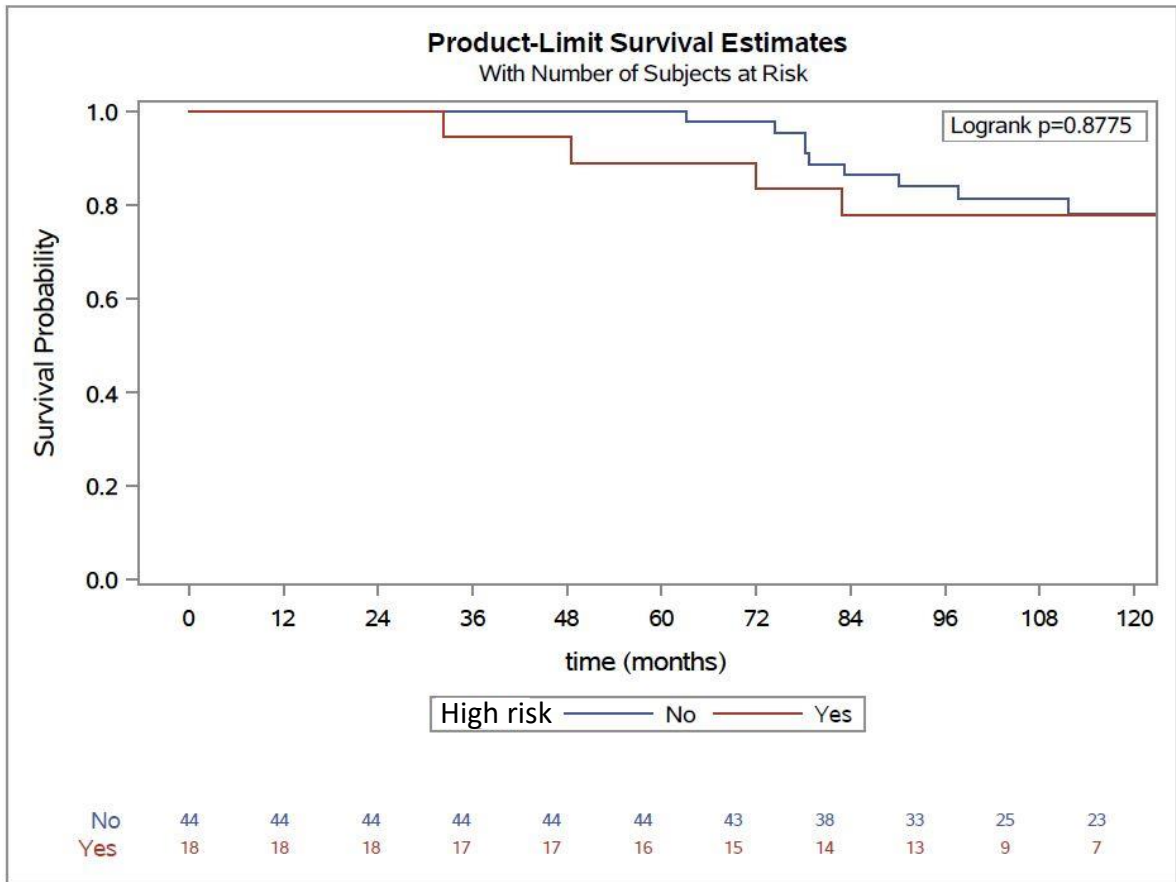


Supplemental Figure 3



	High risk (OlympiA criteria) gBRCA1/2 patients	
	Yes (N=18)	No (N=44)
Median OS (months)	133.9 [118.6 – 180.1]	Not reached
Median follow-up (months)	144.1 [136.8 – 147.5]	144.7 [142.8 – 147.4]
Events (%)	4 (22.2)	10 (22.7)
2-year OS	100%	100%
3-year OS	94.4% [66.6 – 99.2]	100%
5-year OS	88.9% [62.4 – 97.1]	100%
10-year OS	77.8% [51.1 – 91]	77.9% [61.6 – 88]