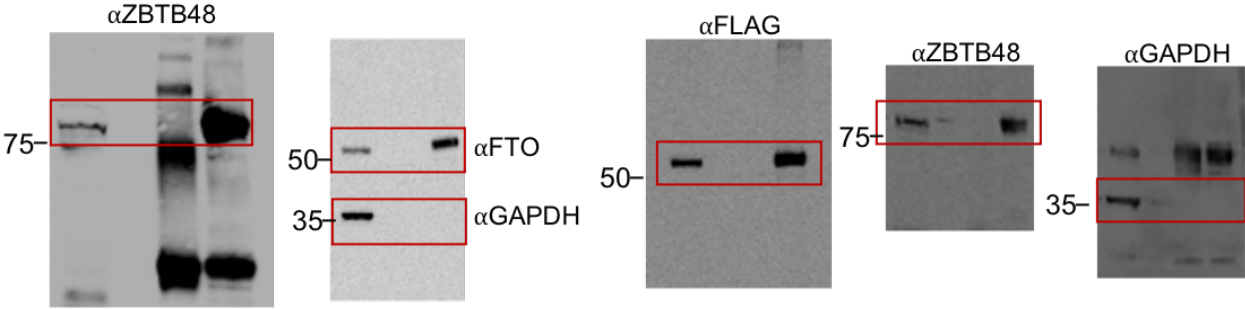
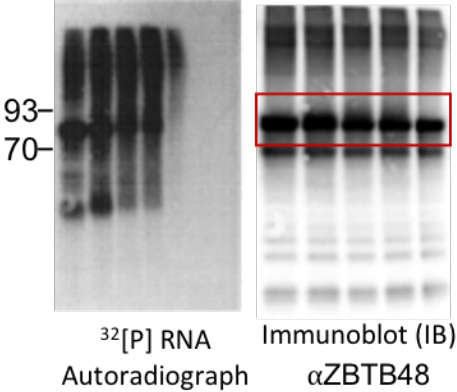


Fig 1

A



B



C

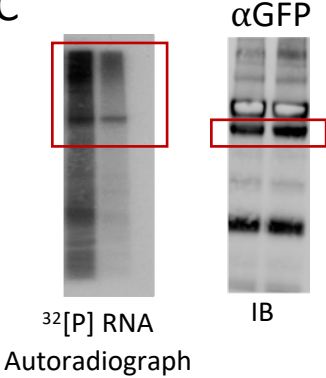
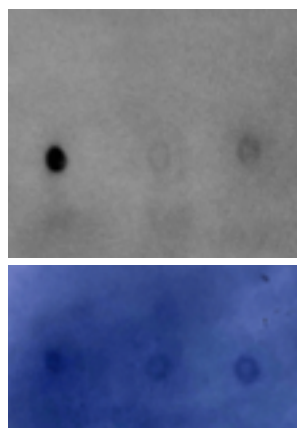


Fig 2

H



α m6A/Am

Methylene
Blue

J

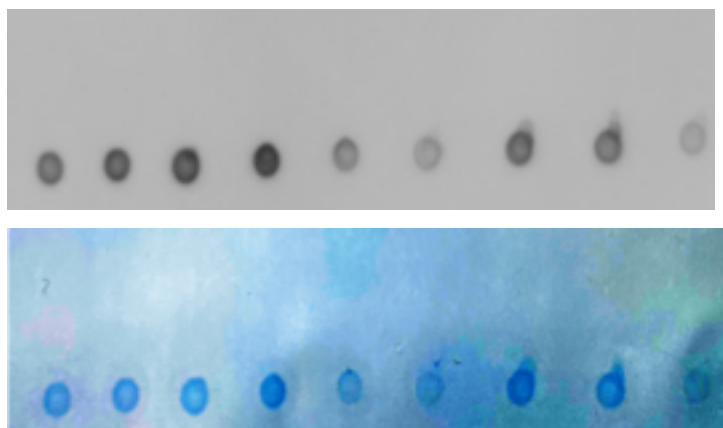


Figure 3A

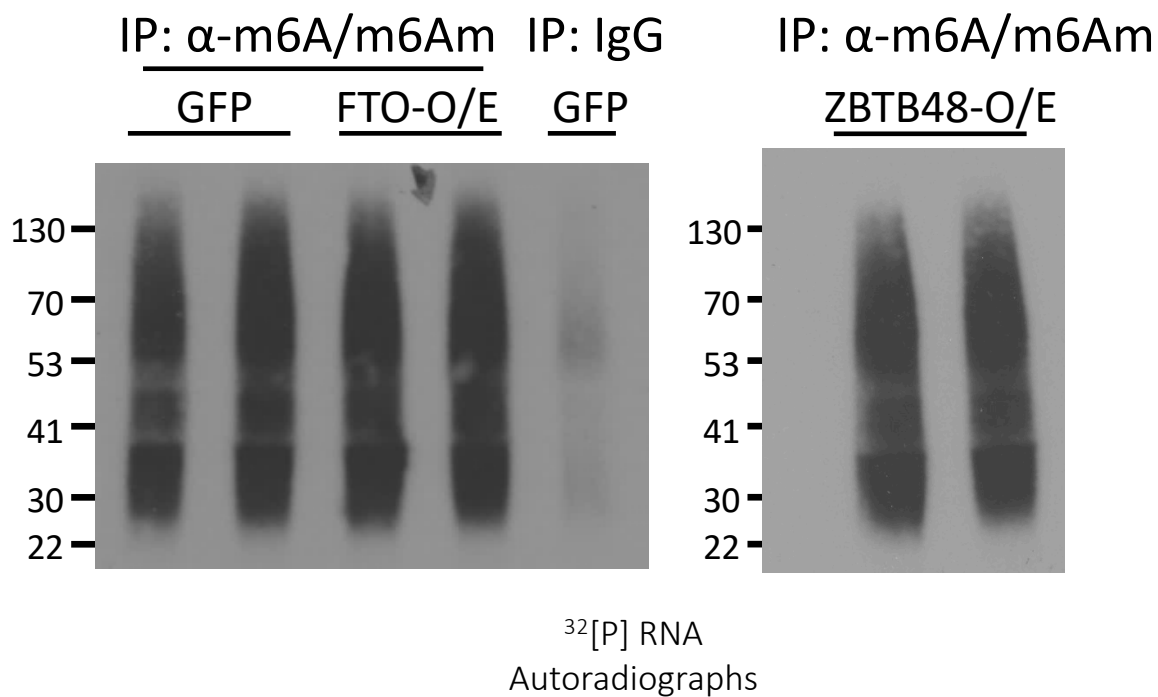
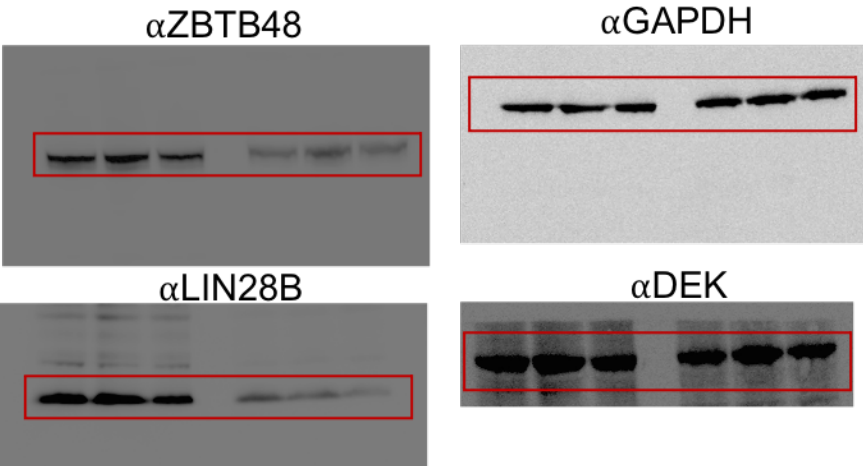


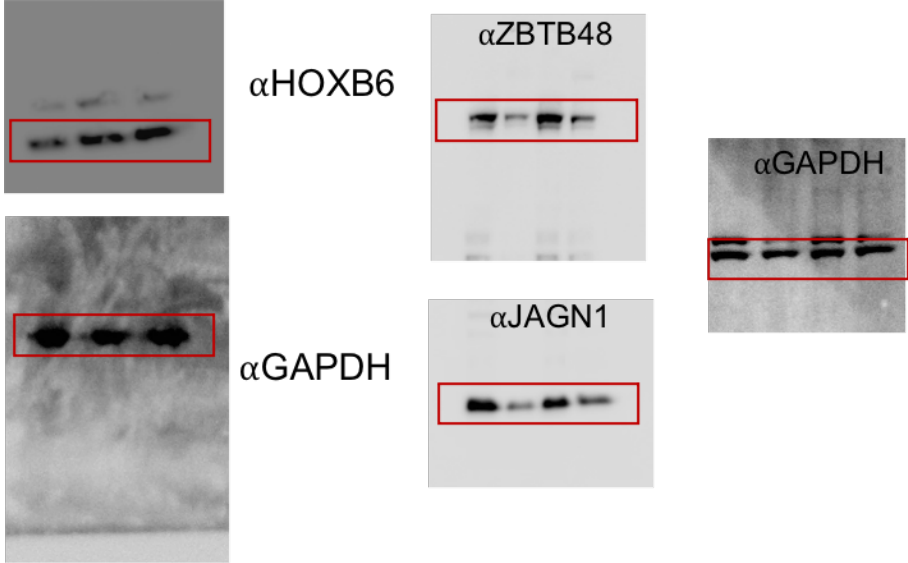
Fig 5

D



Membranes were cut based on protein sizes prior to antibody probing

H



I

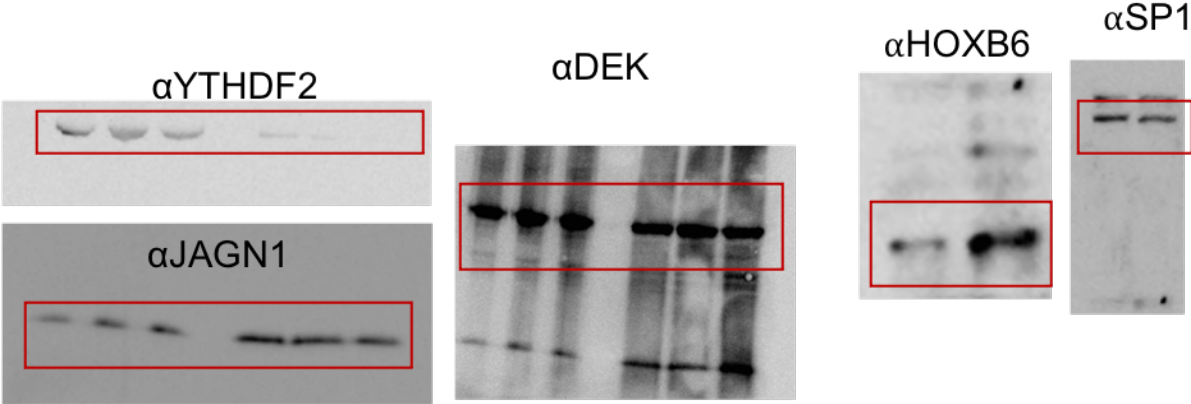


Fig 6G

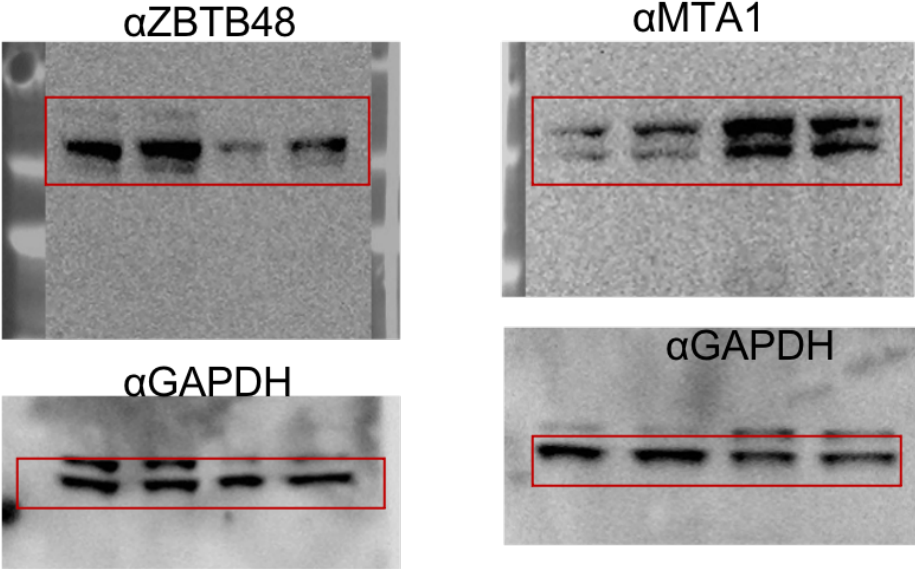
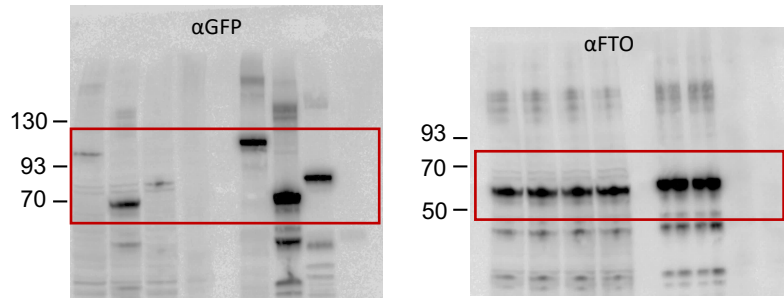


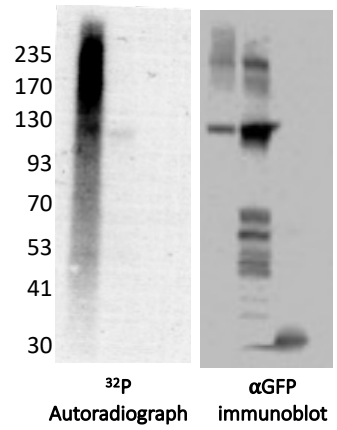
Fig S1

D

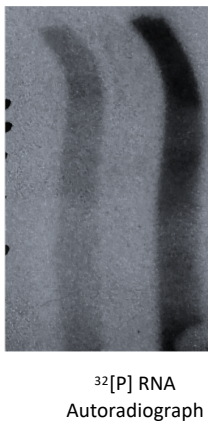


IP'd material was divided into two halves and resolved in parallel to probe for the indicated antibodies

E



F



G

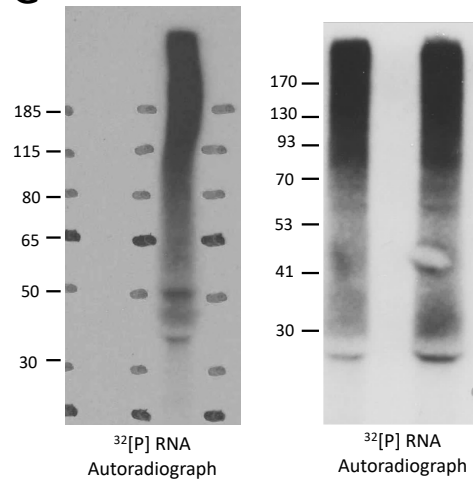
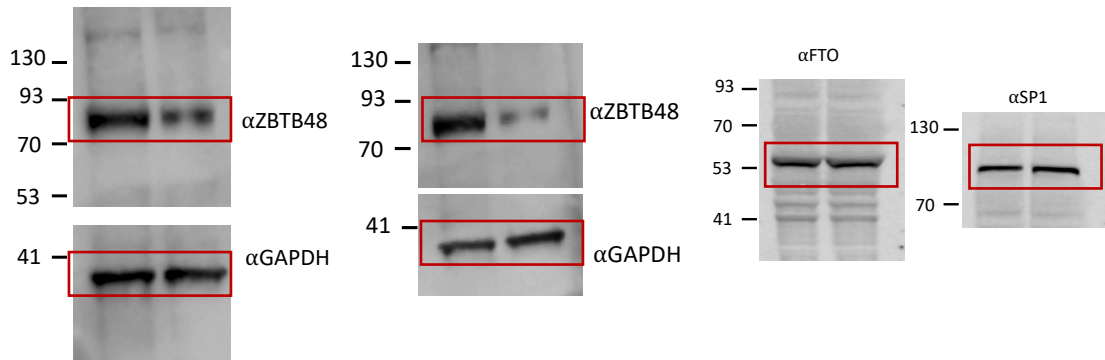
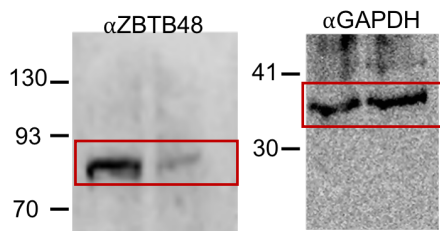


Fig S4

B



F



G

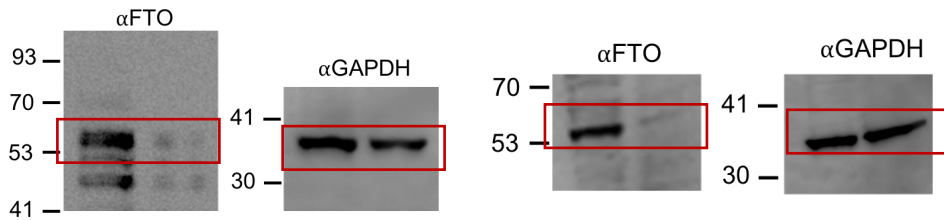


Figure S5G

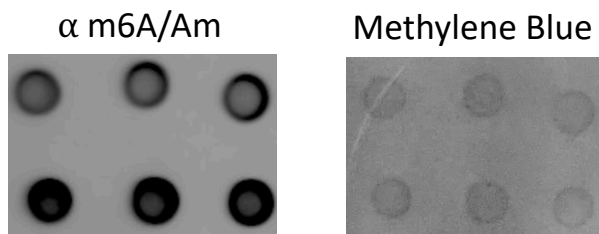


Fig S7C

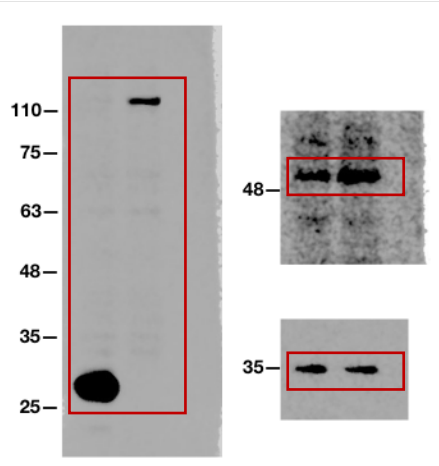
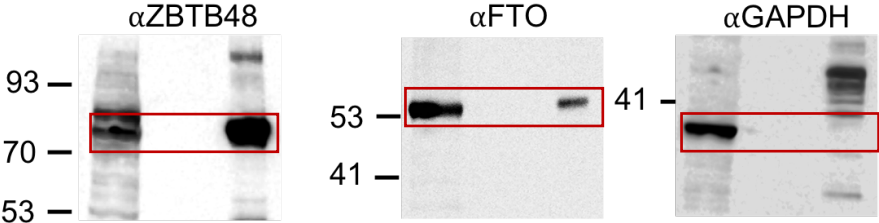
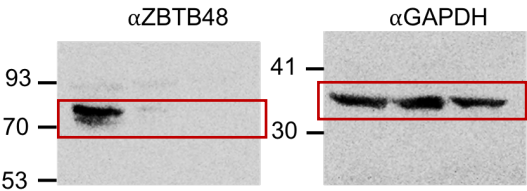


Figure S8

B



C



D

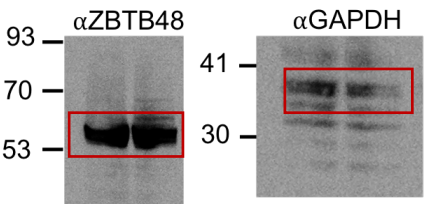
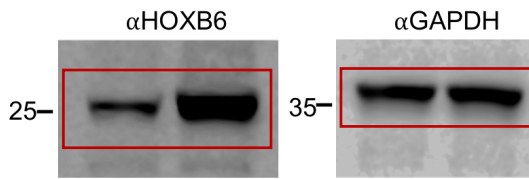
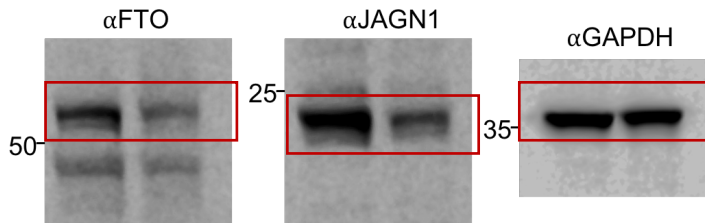


Fig S10

C



E



F

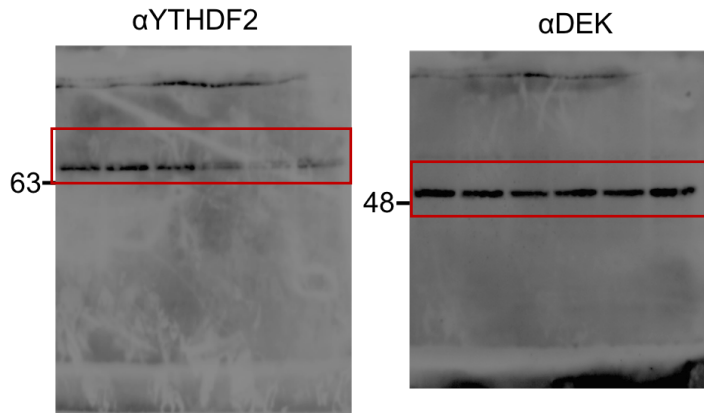
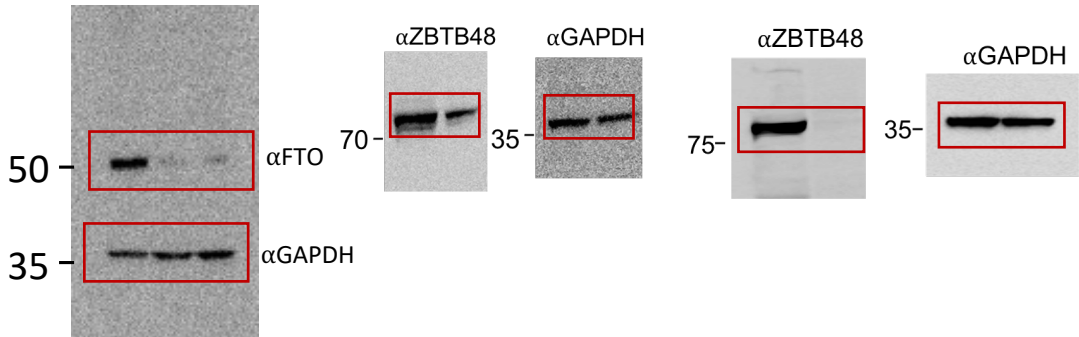


Fig S11

A



E

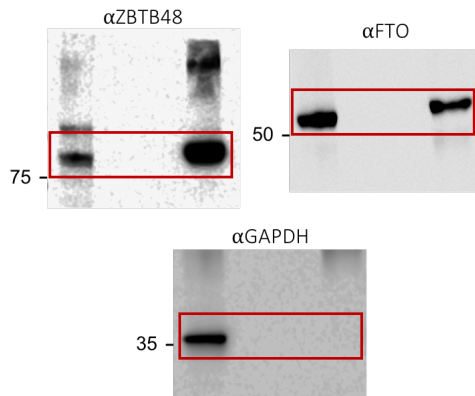


Figure S12D

