

**Supplementary Table 1: Stepwise study cohort selection criteria for patients with biologically favorable DCIS**

<b>Parameter</b>	<b>No. of Subjects</b>
Start: DCIS diagnosed between 2004-2017	339,600
Exclude Male	337,873
Exclude if histology not 8500, 8501, 8010, 8050, 8522, 8504, 8201, 8230	207,305
Exclude if surgery = unknown	200,731
Exclude patients younger than 40 or older than 99	195,464
Exclude patients with high grade	88,306
Exclude patients with ER and PR negative	74,868
Exclude patients with unknown duration between surgery and diagnosis	74,367

**Supplementary Table 2:** Demographics of the Biologically Favorable DCIS Cohort

Variable	Surgery	Active Surveillance	p-value*
<b>Patients</b>	71983 (96.8%)	2384 (3.2%)	
<b>Age (mean ± SD)</b>	59.8 ± 11.3	62.2 ± 13.3	<0.01
<b>Year of Diagnosis</b>			
2004-2009	21397 (29.7%)	654 (27.4%)	
2010-2013	23975 (33.3%)	739 (31.0%)	
2014-2017	26611 (37.0%)	991 (41.6%)	
<b>Race</b>			<0.01
White	58067 (81.5%)	1683 (72.9%)	
Black	9075 (12.7%)	456 (19.8%)	
Other	4140 (5.8%)	168 (7.3%)	
Unknown	701	77	
<b>Insurance Status</b>			<0.01
Private	43038 (60.5%)	1192 (51.6%)	
Medicaid	3275 (4.6%)	112 (4.9%)	
Medicare	23033 (32.4%)	904 (39.2%)	
Other Government	756 (1.1%)	34 (1.5%)	
Not Insured	1011 (1.4%)	67 (2.9%)	
<b>Facility Type</b>			<0.01
Academic	20044(27.8%)	768 (32.2%)	
Community Cancer	18035 (25.1%)	595 (25.0%)	
Comprehensive Community Program	33904 (47.1%)	1021 (42.8%)	
<b>Facility Location</b>			<0.01
Northeast	16245 (22.6%)	521 (21.9%)	
South	26073 (36.2%)	1076 (45.1%)	
Midwest	19425 (27.0%)	465 (19.5%)	
West	10240 (14.2%)	322 (13.5%)	
<b>Charlson Comorbidity Index</b>			<0.01
0	61910 (86.0%)	2190 (92.0%)	
1	8206 (11.4%)	138 (5.8%)	
2	1403 (2.0%)	36 (1.5%)	
3+	464 (0.6%)	20 (0.8%)	
<b>Tumor Size</b>			<0.01
<1 cm	25013 (34.8%)	446 (18.7%)	
1-<2 cm	10320 (14.3%)	164 (6.9%)	
2-<3 cm	3651 (5.1%)	71 (3.0%)	
3-<4 cm	1377 (1.9%)	37 (1.6%)	
4-<5 cm	890 (1.2%)	21 (0.9%)	
≥ 5 cm	1450 (2.0%)	69 (2.9%)	
Unknown	29282 (40.7%)	1576 (66.1%)	

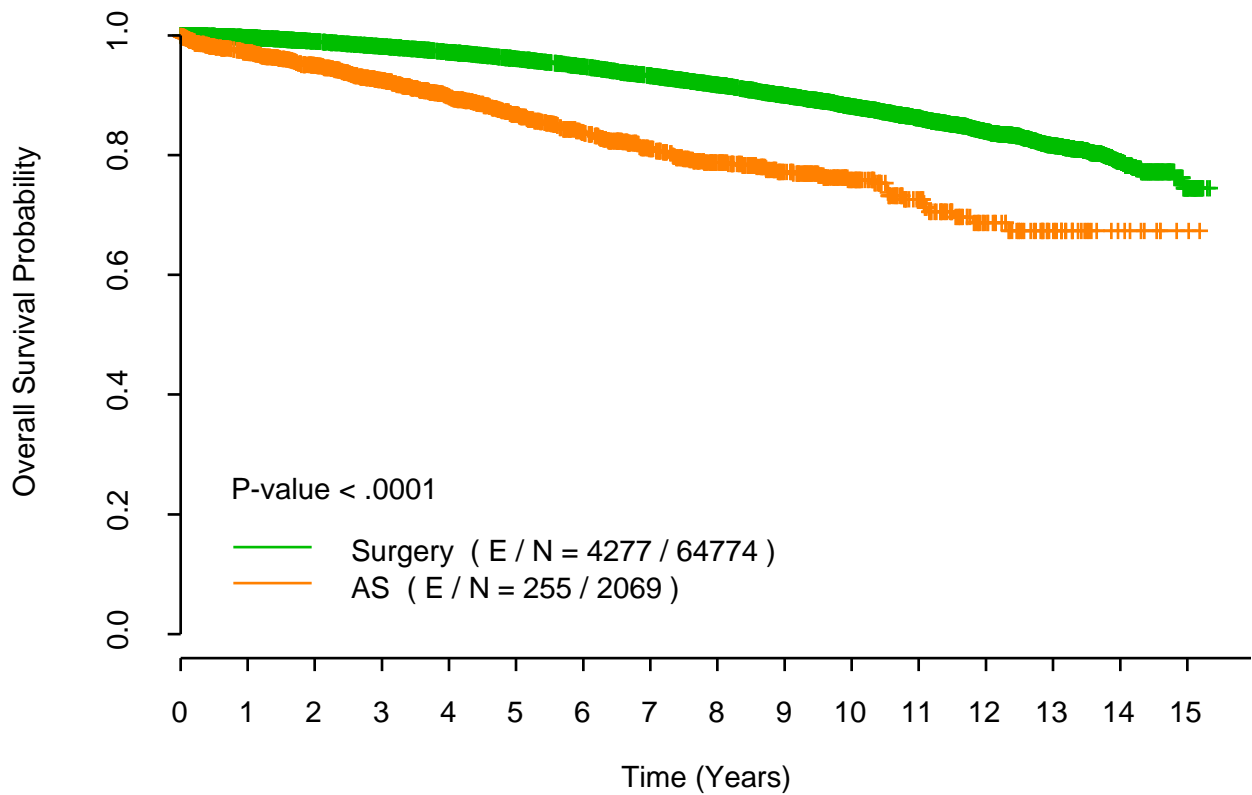
<b>Endocrine Therapy</b>			<0.01
Yes	34599 (48.1%)	307 (12.9%)	
No	33233 (46.2%)	1822 (76.4%)	
Unknown	4151 (5.7%)	255 (10.7%)	

\* P values were determined using Wilcoxon rank-sum tests for continuous variables and chi-square tests or Fisher's exact tests for categorical variables.

**Supplementary Table 3:** Endocrine therapy rates among AS patients by age

Age	Endocrine Therapy Use*		
	Yes (%)	No (%)	Unknown (%)
<b>&lt;50 years (n=493)</b>	35 (7.1%)	391 (79.3%)	67 (13.6%)
<b>50-64 years (n=882)</b>	94 (10.7%)	690 (78.2%)	98 (11.1%)
<b>Age &gt;=65 (n=1009)</b>	178 (17.6%)	741 (73.4%)	90 (8.9%)
<b>Total (2384)</b>	307	1822	255

\*P value < 0.01 for association between endocrine therapy use and age based on chi-square test.



**Supplementary Figure 1** Kaplan Meier Survival Curves of Immediate Surgery vs Active Surveillance (AS) for the entire cohort of patients with Biologically Favorable DCIS Cohort. A log-rank test was employed to compare survival curves between two groups.