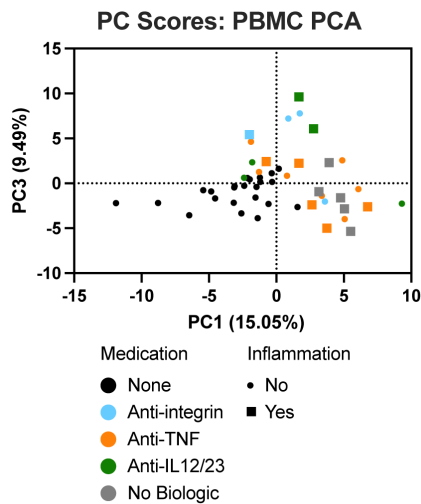
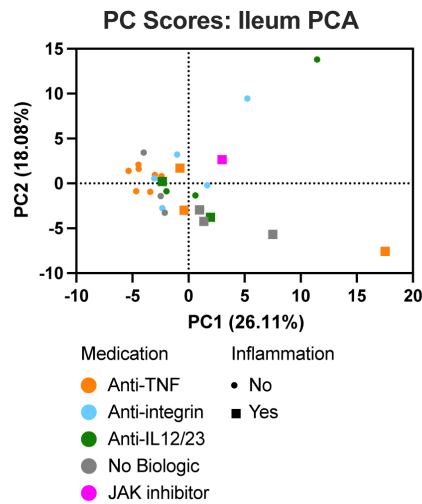


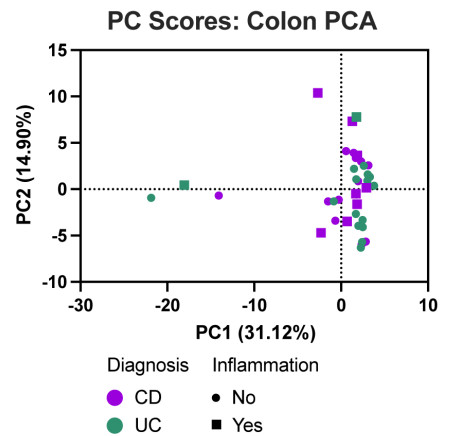
A



B



C



**Supplementary Figure 6. Principal component analysis (PCA) using the cell subtypes identified by spectral flow cytometry as variables.** Unsupervised clustering via principal component analysis was performed on PBMC samples (n=49) (A), ileum samples (n=29) (B), and colon samples (n=38) (C). Cell counts determined through manual gating were used as variables (110 cell subtypes for PBMC samples, 98 for ileum samples, 101 for colon samples). Only cell subtypes with >0 counts in at least five samples were included as variables. Each sample is represented by a dot, where color indicates medication or diagnosis, and the shape (square or circle) indicates with or without active inflammation.