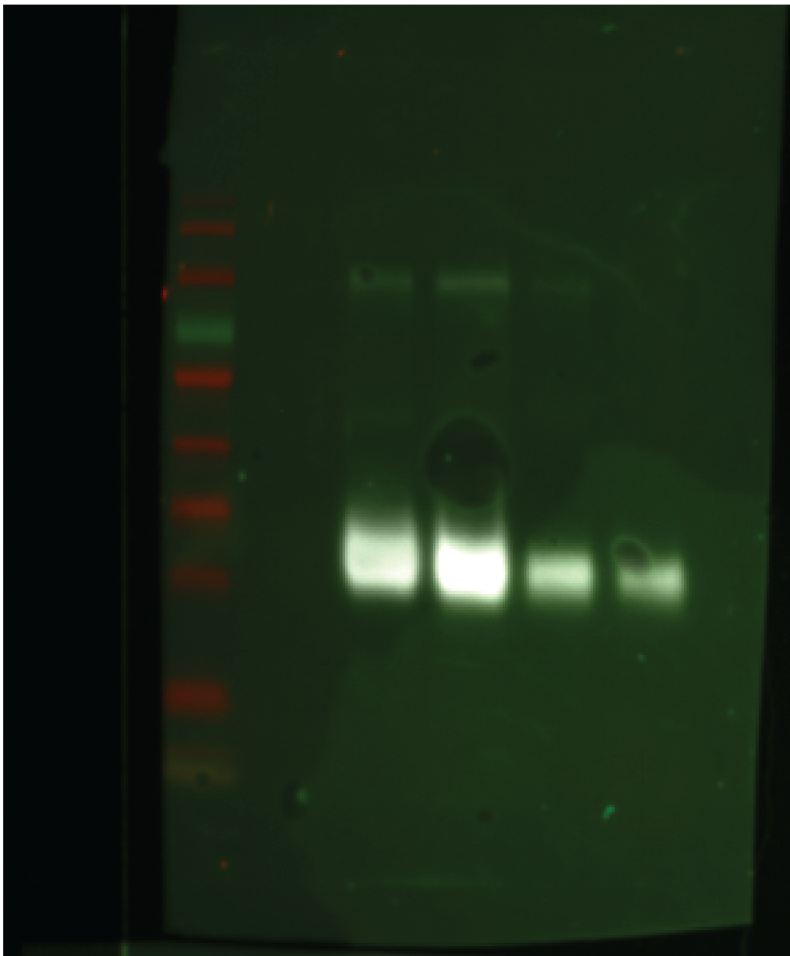


1 2 3 4 5 x



1: Ladder

2: PBS

3. Bat serum enriched for IgM

4. Bat serum enriched for IgA

5. Bat serum enriched for IgG

x. Non-enriched serum

Blot is from a culture supernatant from a hybridoma we made ("F4"). The hybridoma derived monoclonal antibodies were generated using BALB/c splenocytes and SP2/0 myeloma cells. Previously, BALB/c mice were immunized and boosted i.p. with S-300 size fractionated bat serum enriched for IgM and IgA antibodies and Hunters Titermax Gold adjuvant. Spleens from these mice were harvested four days after the final boost and fused with SP2/0 myeloma cells to create hybridomas, per standard protocols. Positive hybridomas were subcloned two times and then screened via western blot.

The western blot is bat serum that has been enriched via S300 bead size chromatography for specific antibodies.

The image was taken with a model FluorChem R from Protein Simple.