

Supplementary figures

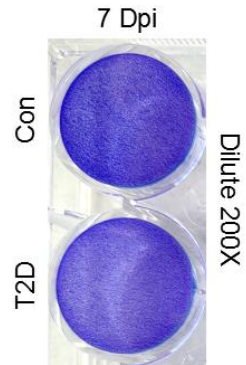


Fig. S1 The plaque assay at 7 Dpi in control and T2D mice. The viral samples were diluted 200X.

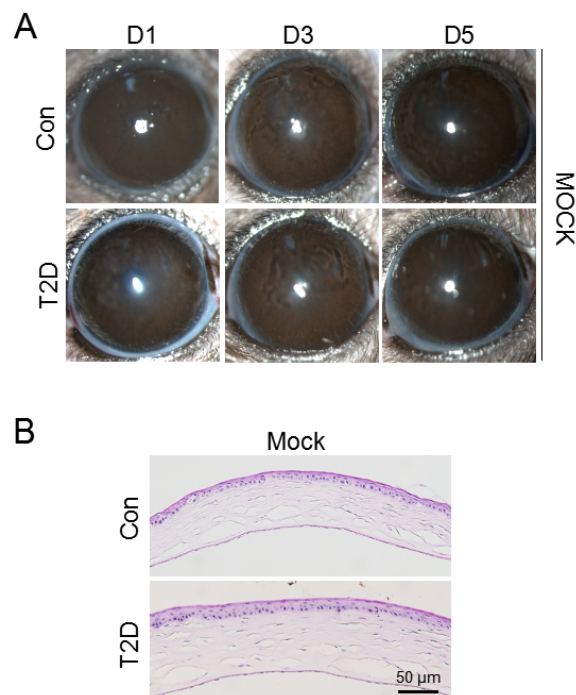


Fig. S2 Mock treatment of corneas in control and T2D mice. (A) Slit-lamp examination of corneas. (B) H&E staining of corneal sections.

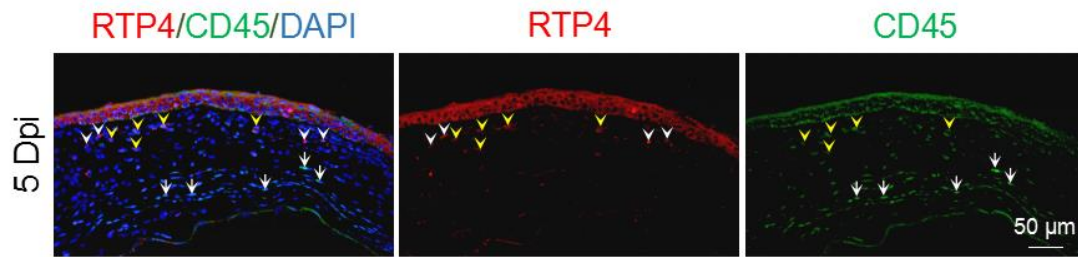


Fig. S3 Immunofluorescence staining for RTP4 and CD45 (immune cells) at Dpi5 in control mice. RTP4 was predominantly expressed in corneal epithelium, with some expression also detected in the corneal stroma. Additionally, it can be partially co-expressed with CD45+ cells. Yellow arrowheads indicate CD45+ RTP+ cells; White arrowheads indicate CD45- RTP+ cells; White arrows indicate CD45+ RTP- cells.