

# Supporting Information

## House Dust Mite Proteins Adsorb on Multi-Walled Carbon Nanotubes Forming an Allergen Corona that Intensifies Allergic Lung Disease in Mice

Ryan D. Bartone<sup>1</sup>, Logan J. Tisch<sup>1</sup>, Judith Dominguez<sup>2</sup>, Christine K. Payne<sup>2</sup>, James C. Bonner<sup>1</sup>

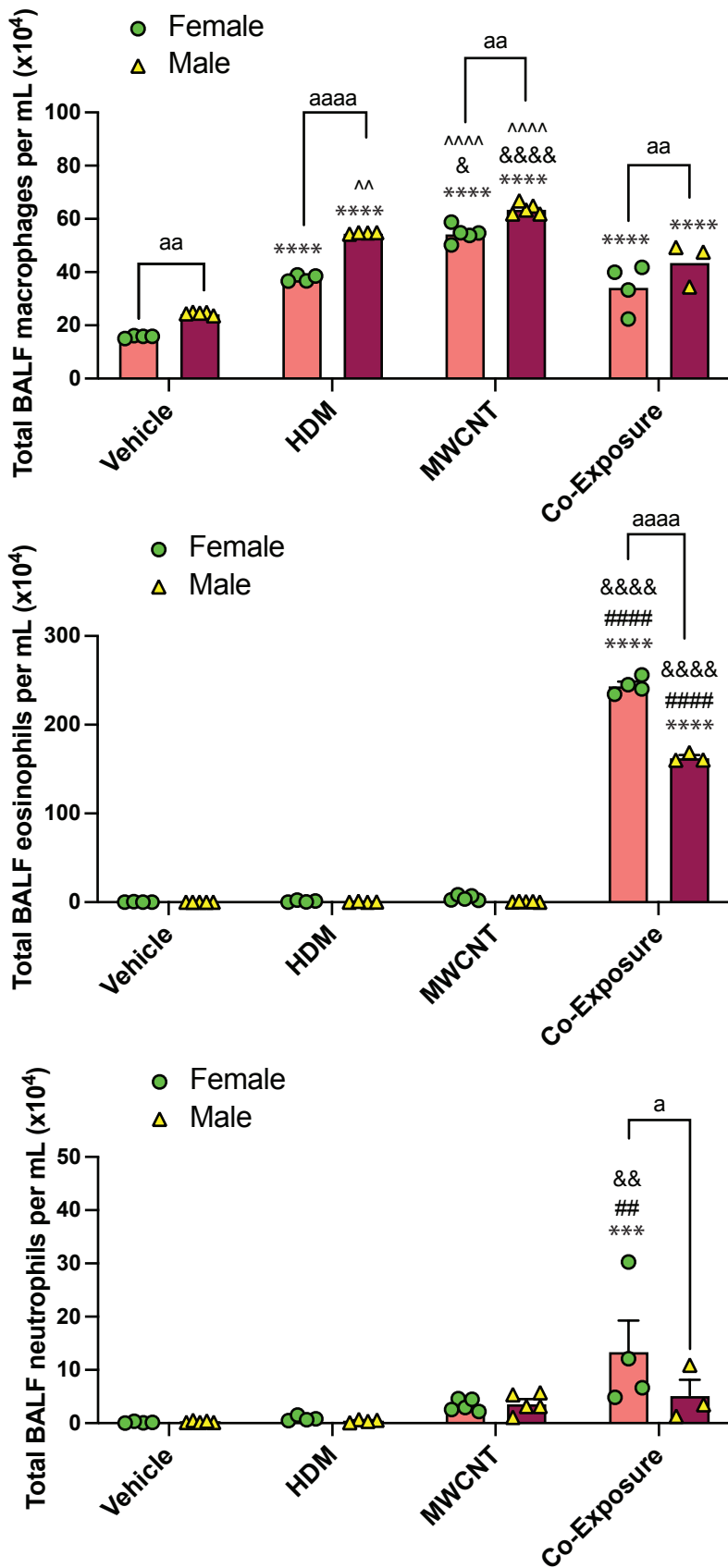
\*

### Author affiliations:

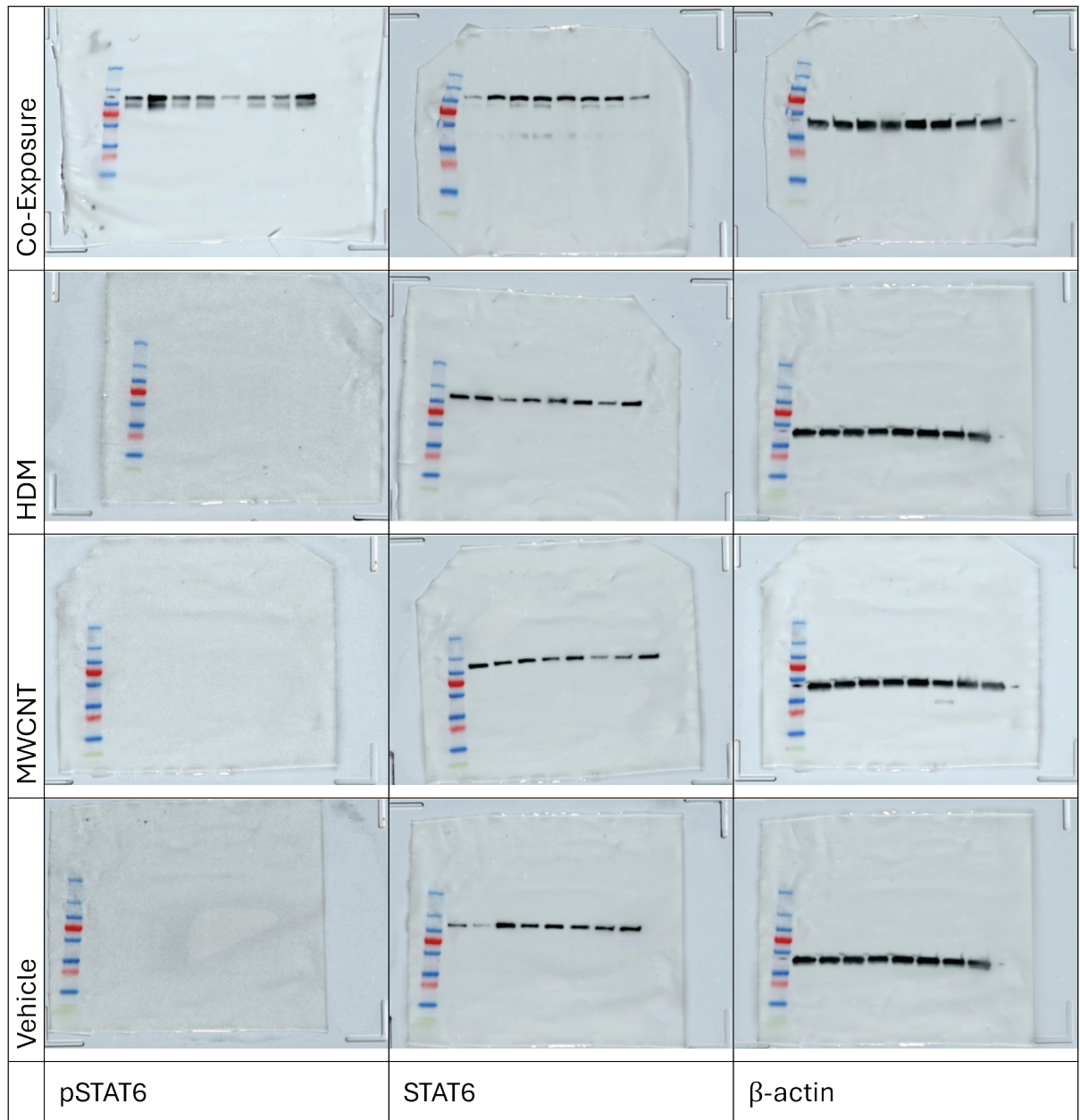
<sup>1</sup>Toxicology Program, Department of Biological Sciences, North Carolina State University, Raleigh, NC, 27695, USA.

<sup>2</sup>Thomas Lord Department of Mechanical Engineering and Materials Science, Duke University, Durham, North Carolina, 27708, USA

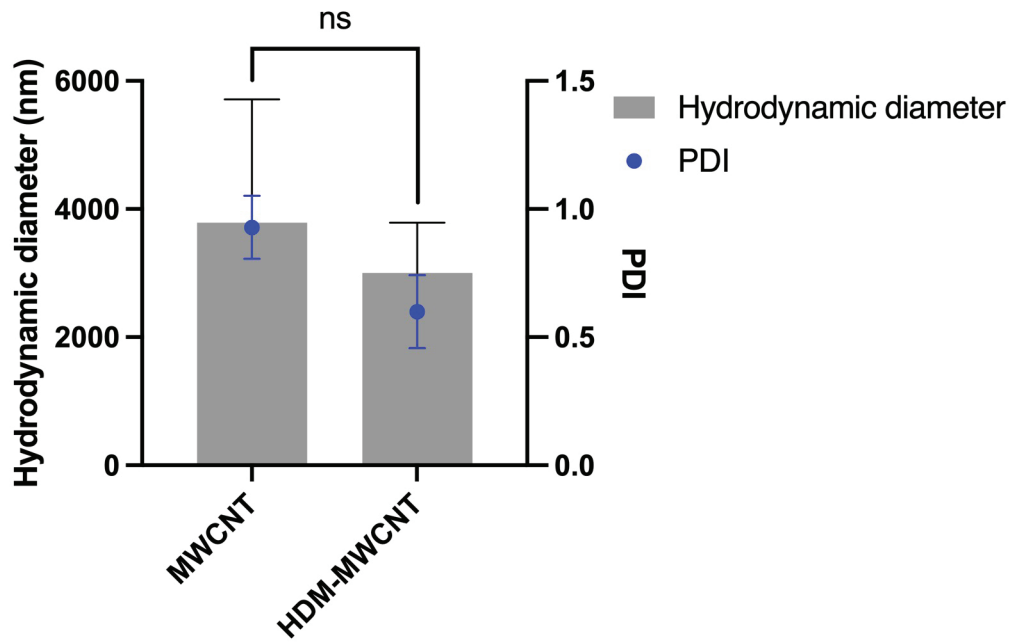
\*Address correspondence to: [jcbonner@ncsu.edu](mailto:jcbonner@ncsu.edu)



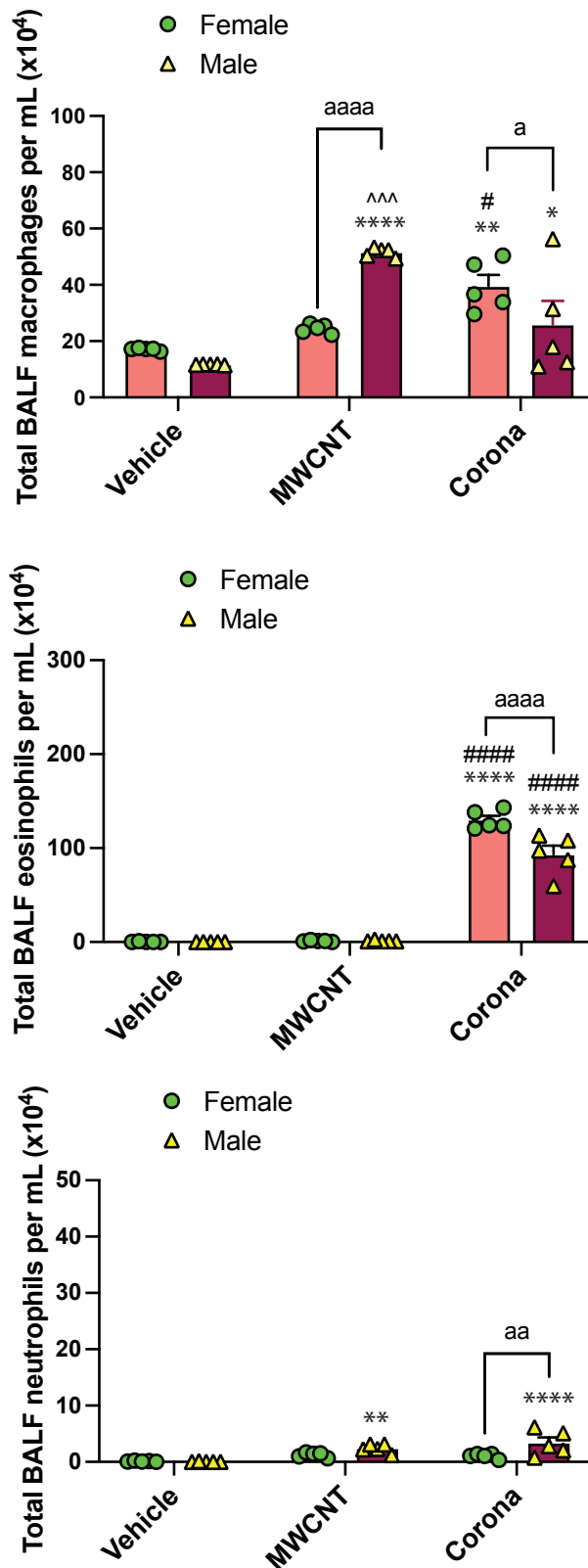
**Fig. S1.** Absolute numbers of macrophages, eosinophils, and neutrophils in each treatment group from which the percentage of each cell type was derived shown in Fig. 1. \*\*\* $p < 0.001$ , \*\*\*\* $p < 0.0001$  compared to vehicle treatment; ## $p < 0.01$ , #### $p < 0.0001$  when compared to MWCNT treatment; & $p < 0.05$ , && $p < 0.01$ , &&& $p < 0.0001$  when compared to HDM treatment; ^^ $p < 0.01$ , ^^ ^^ $p < 0.0001$  when compared to co-exposure treatment; a $p < 0.05$ , aa $p < 0.01$ , aaaa $p < 0.0001$  when comparing sexes as determined by two-way ANOVA with Tukey's post hoc analysis.



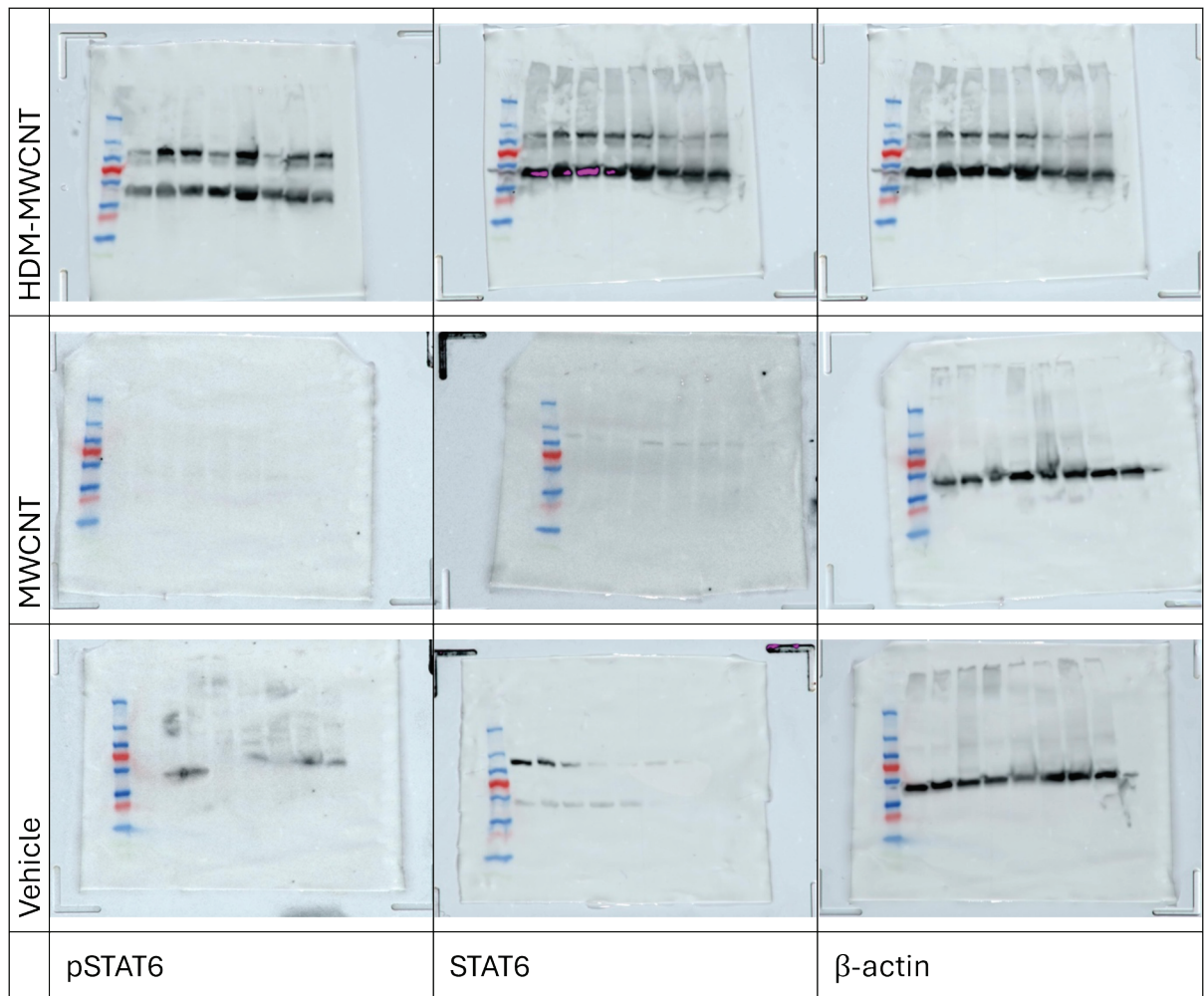
**Fig. S2.** Original western blot images used in Fig. 4.



**Fig. S3.** Dynamic light scattering (DLS) results showing the hydrodynamic diameter and polydispersity index (PDI) of pristine MWCNTs and MWCNTs with HDM allergencorona (HDM-MWCNT). ns = not significant.



**Fig. S4.** Absolute numbers of macrophages, eosinophils, and neutrophils in each treatment group from which the percentage of each cell type was derived shown in Fig. 7. \* $p < 0.05$ , \*\* $p < 0.01$ , \*\*\*\* $p < 0.0001$  compared to vehicle treatment; # $p < 0.05$ , #### $p < 0.0001$  when compared to MWCNT treatment; ^^^ $p < 0.001$  when compared to co-exposure treatment; a $p < 0.05$ , aa $p < 0.01$ , aaaa $p < 0.0001$  when comparing sexes as determined by two-way ANOVA with Tukey's post hoc analysis.



**Fig. S5.** Original western blot images used in Fig. 9.