

Identification of a novel intronic variant in *COL4A2* gene associated with fetal severe cerebral encephalomalacia and subdural hemorrhage

Rong-Yue Sun^{1*}, Yue Xu^{1*}, Qing-Qing Huang^{1*}, Si-Si Hu¹, Hua-Zhi Xu², Yan-Zhao Luo³, Ting Zhu¹, Jun-Hui Sun⁴, Yu-Jing Gong¹, Mian-Mian Zhu¹, Hong-Wei Wang⁵, Jing-Ye Pan^{6, 7}, Chao-Sheng Lu^{1#}, Dan Wang^{1#}

Supplementary Figure:

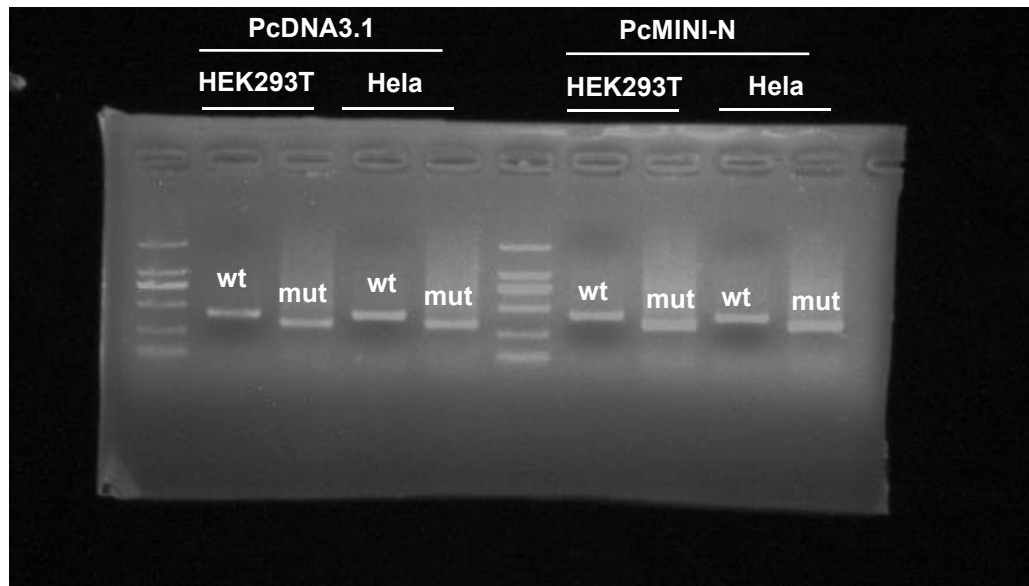


Figure legend: Gel electrophoresis of reverse transcription polymerase chain reaction products from two types of plasmid vectors (PcDNA3.1 and PcMINI-N) displayed a single band from the wild type (wt) and a smaller band in the mutant type (mut).