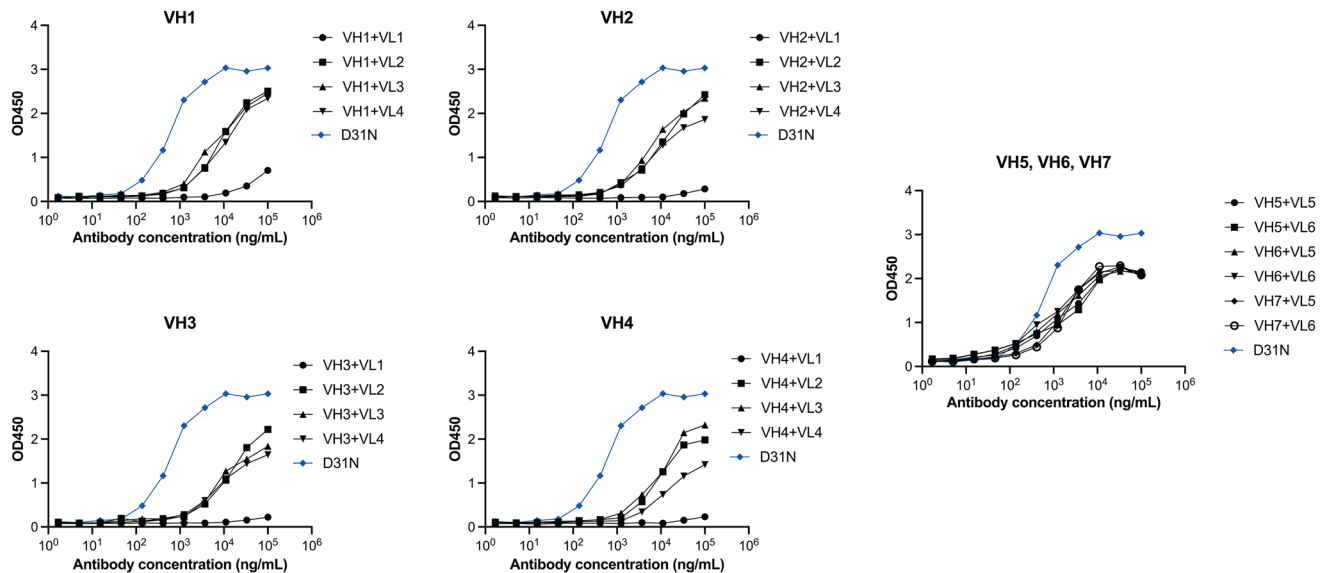
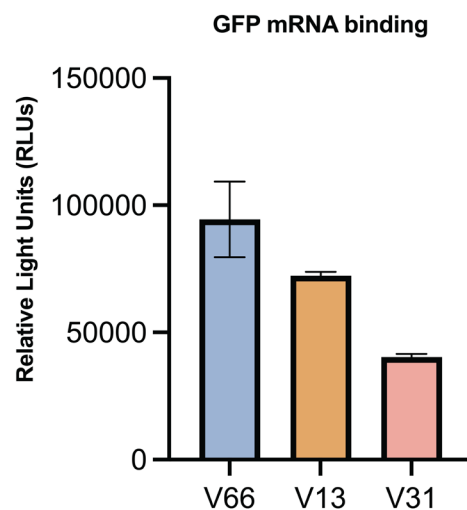


Next-generation cell-penetrating antibodies for tumor targeting and RAD51 inhibition

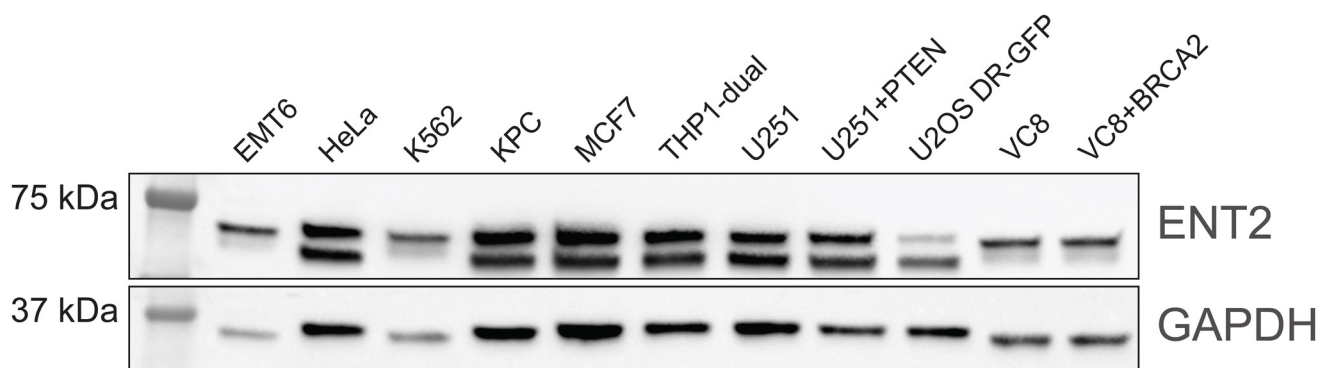
SUPPLEMENTARY MATERIALS



Supplementary Figure 1: ELISA screening of 22 humanized 3E10 variants for poly(dT) EC_{50} . Plots demonstrating the antibody/DNA binding curves from which EC_{50} s for all variants were mathematically derived. In each experiment, D31N was used as a positive control.



Supplementary Figure 2: Determination of 3E10 variant GFP mRNA binding affinity. ELISA assay measuring V66, V13, and V31 affinity to 3'-biotinylated mRNA encoding cytosolic GFP. Data are mean \pm SEM, $n = 3$ replicates.



Supplementary Figure 3: Determination of ENT2 expression in human cell lines. ENT2 (~60 and ~55 kDa bands) relative abundance in all cell lines used for 3E10 antibody and/or nucleic acid payload uptake was assessed using western blot analysis.