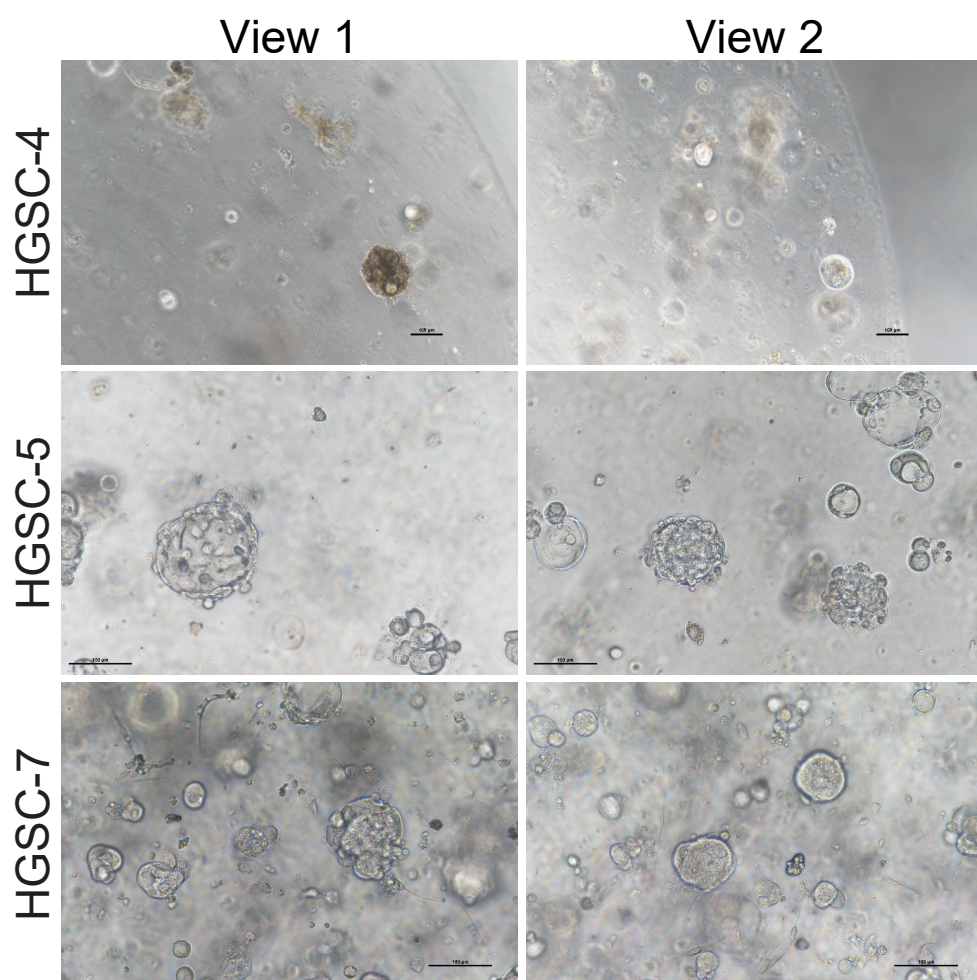


Figure S1

A



B

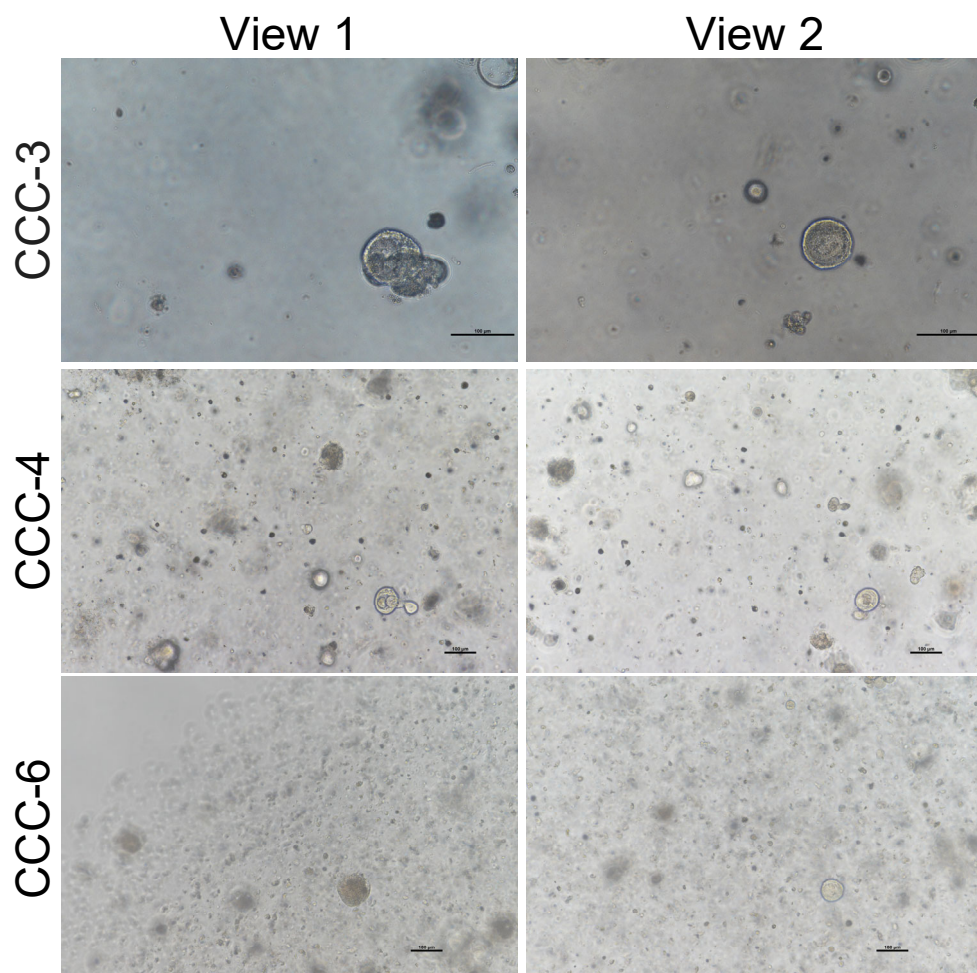
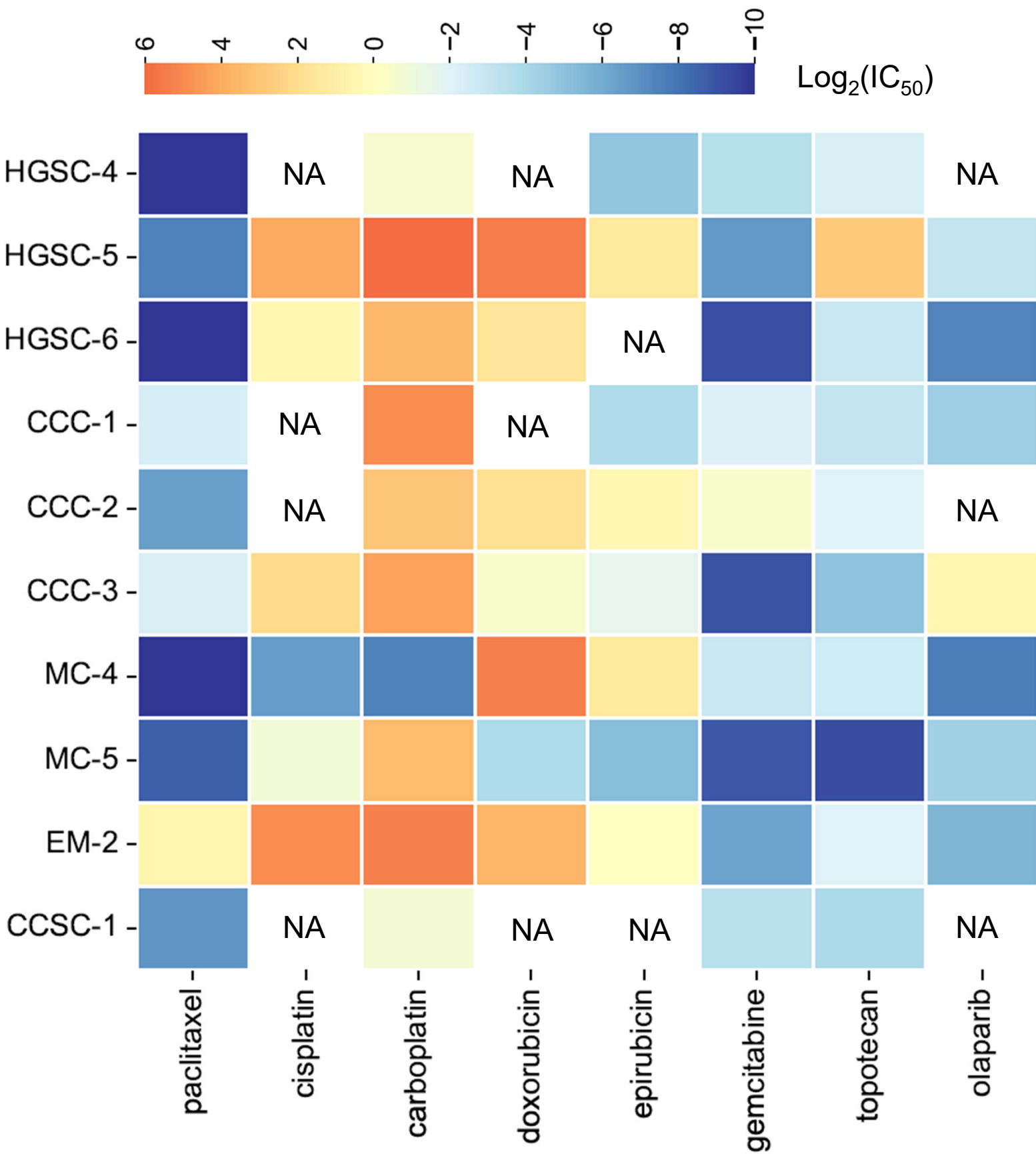


Figure S2



Supplementary Figure legends

Figure S1. OV-PDOs exhibit inpatient heterogeneity.

Phase-contrast imaging of three HGSC PDOs (A) and three CCC PDOs (B) revealed distinct morphologies among organoids from the same patient, indicating inpatient heterogeneity.

Figure S2. Visualization of drug IC₅₀ values in ovarian cancer.

Heat map display of estimated IC₅₀ values, which represent the drug concentration required to inhibit 50% of the target response. Color intensity indicates IC₅₀ values for different drugs.