

Supplementary Information

Multivalent protein-nucleic acid interactions probed by composition-gradient multi-angle light scattering

Josephine C. Ferreon^{1*}, Natee Kongchan², Phoebe S. Tsoi¹, Kyoung-Jae Choi¹, Sophia Kenrick^{3*}, Joel Neilson^{2*}, Allan Chris M. Ferreon^{1*}

¹Department of Biochemistry and Molecular Pharmacology, Baylor College of Medicine, Houston, TX, USA

²Department of Integrative Physiology, Baylor College of Medicine, Houston, TX 77030, USA

³Wyatt Technology, LLC, Santa Barbara, CA, USA

*Correspondence: josephine.ferreon@bcm.edu, sophia_kenrick@waters.com, neilson@bcm.edu, allan.ferreon@bcm.edu

Keywords: TDP43, CELF1, UG repeats, TG repeats, NANOG promoter, multi-angle light scattering, composition gradient, CG-MALS, EMSA, electrophoretic mobility shift assay, nucleic acid, RNA-binding proteins, DNA-binding proteins, multivalent interactions

Table S1. Molecular weights (MW) of components.			
Protein:Nucleic acid Complex	MW _{protein} (kDa)	MW _{nucleic acid} (kDa)	bp no. (5'-3') ^b
TDP43 ^{RRM1} :(TG) ₆	12.0	3.7	12
TDP43 ^{RRM1} :(GT) ₁₂	12.0	7.5	24
CELF1 ^{RRM1-2} :(UGUU) ₄	21.1	5.0	16
CELF1 ^{RRM1-2} :(GU) ₂₂	21.1	14.3	44
^b bp = base pairs			

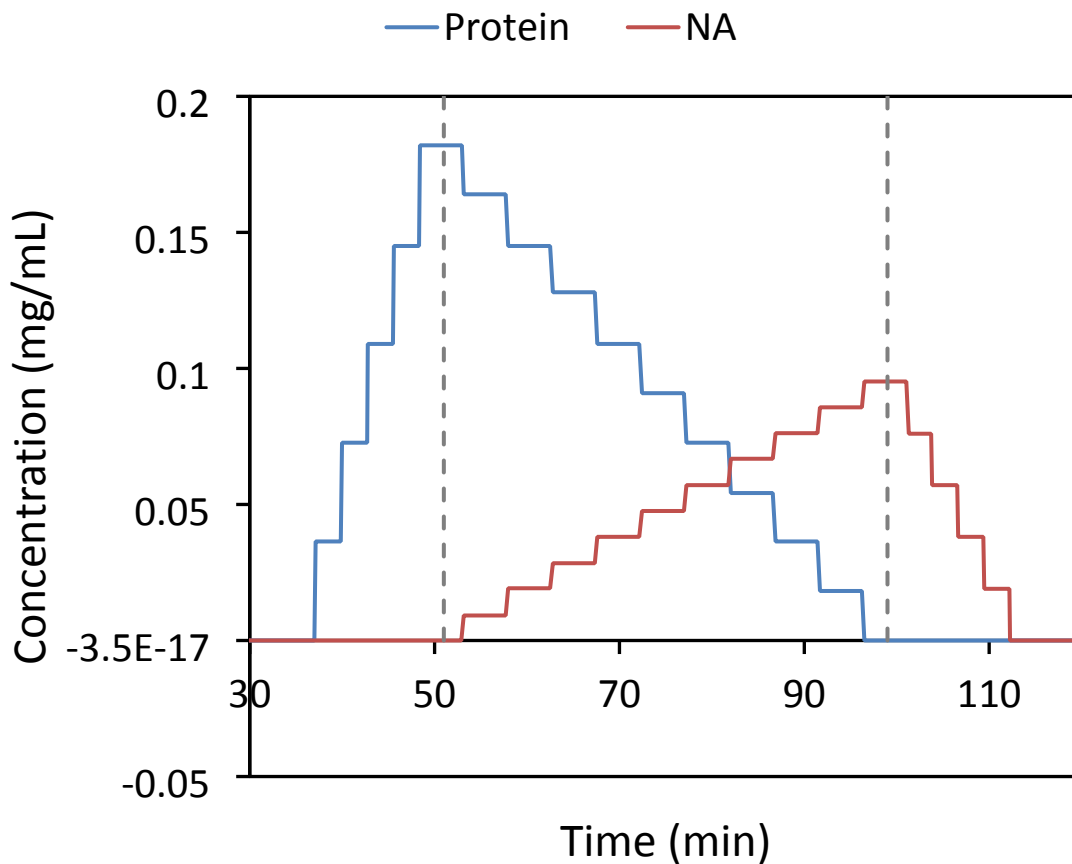


Figure S1 | CG-MALS example method with varying protein and nucleic acid concentrations.