

# Guide to scoring of *in vivo* biofilm from SEM images

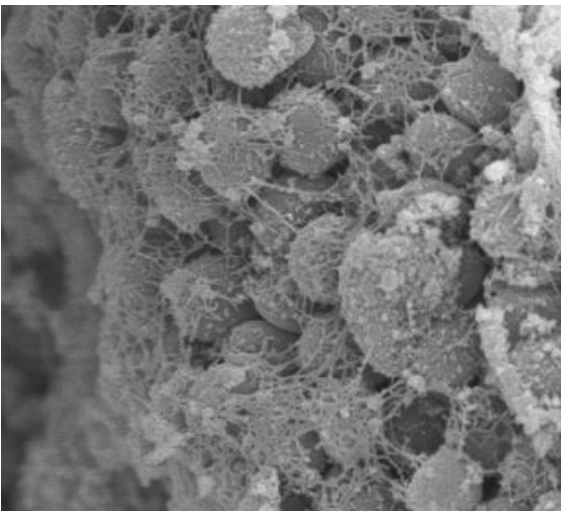
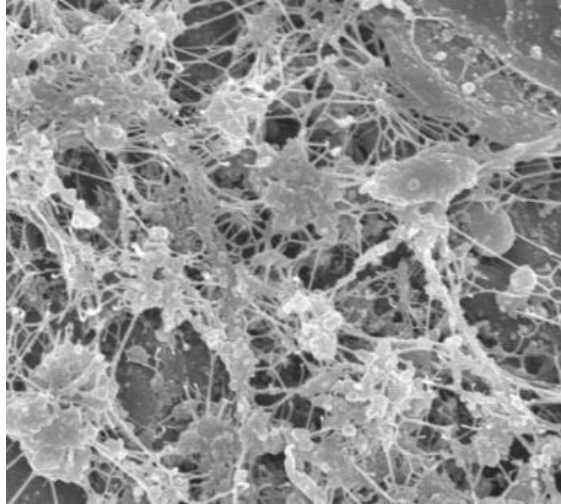
Mayo Clinic Infectious Diseases Research Laboratory

*In vivo* biofilms are scored based on the following criteria:

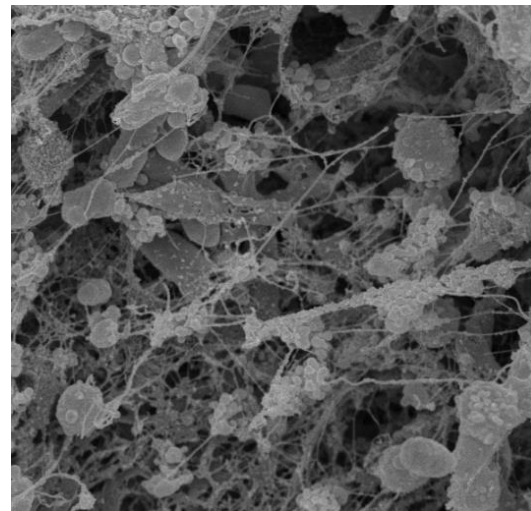
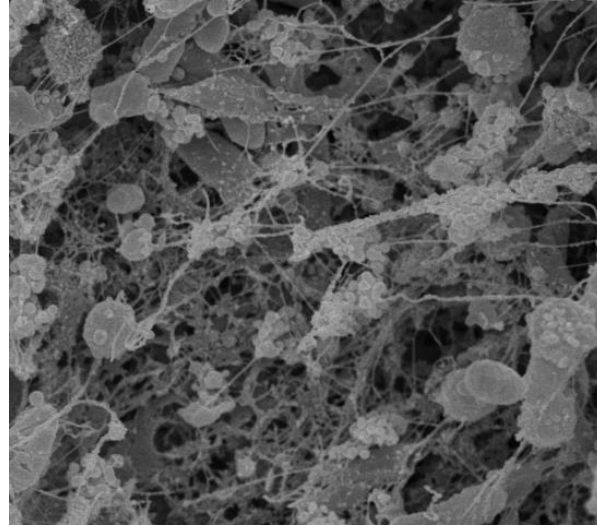
1. Extracellular polymeric substance (EPS) integrity/abundance
2. Integrity of microbial cells
3. Microbial abundance

# EPS integrity/abundance examples: Stringy EPS

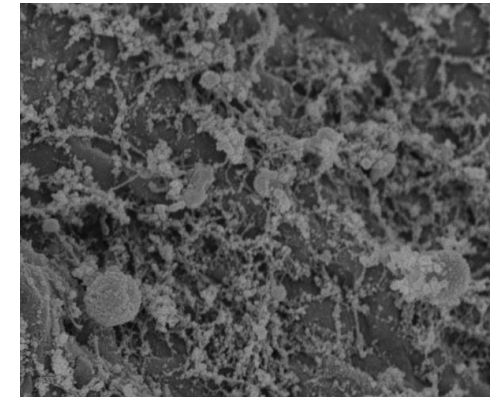
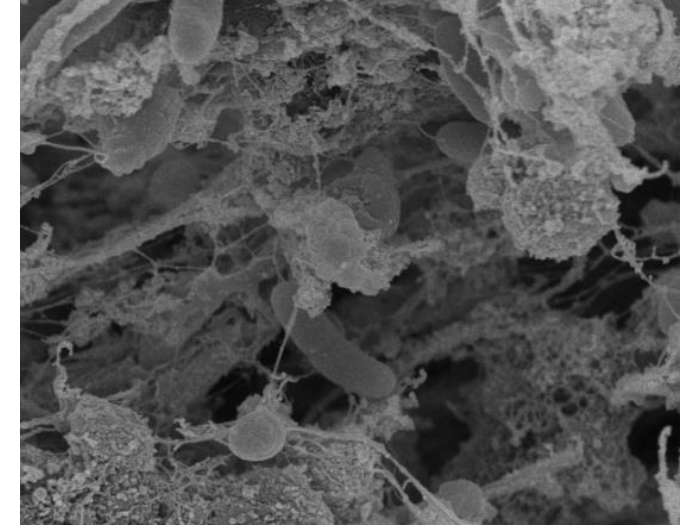
**High: 3**



**Medium: 2**

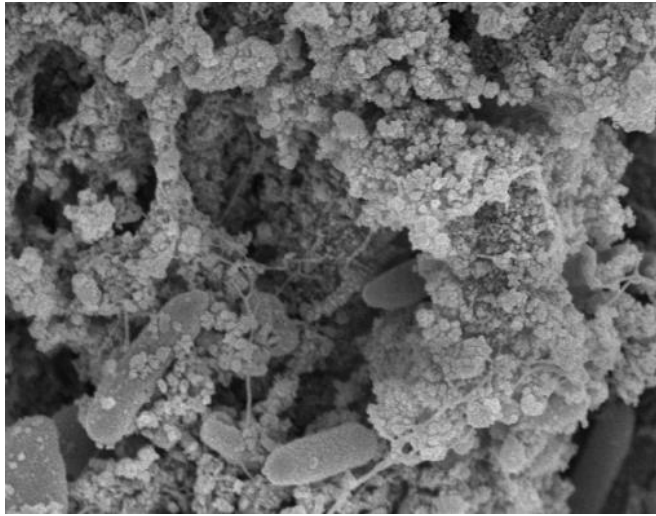


**Low: 1**

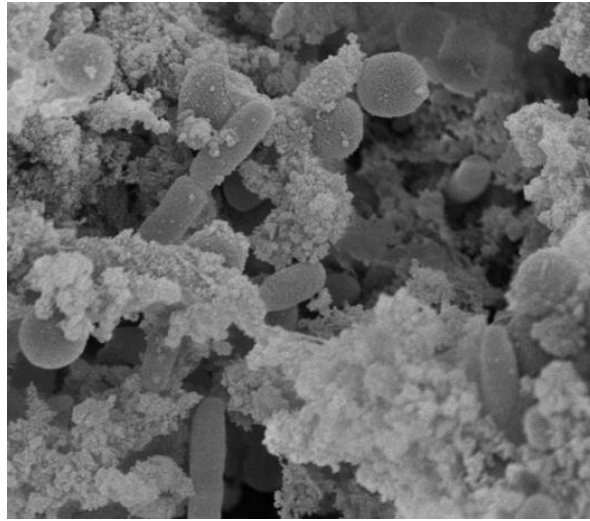


# EPS integrity/abundance examples: Granulated EPS

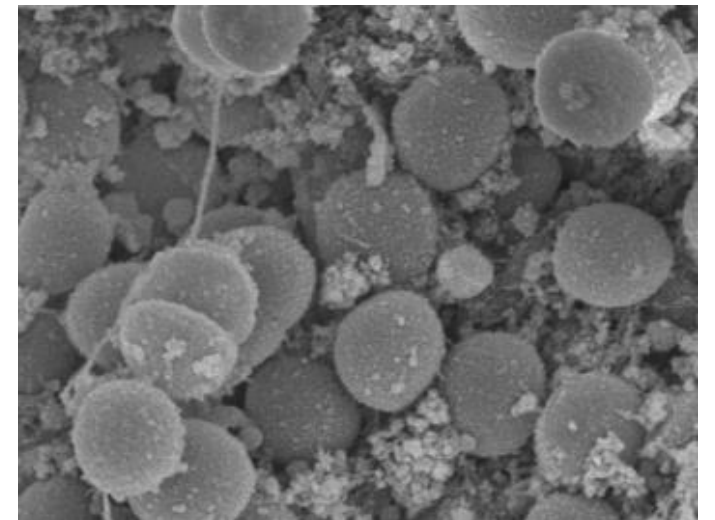
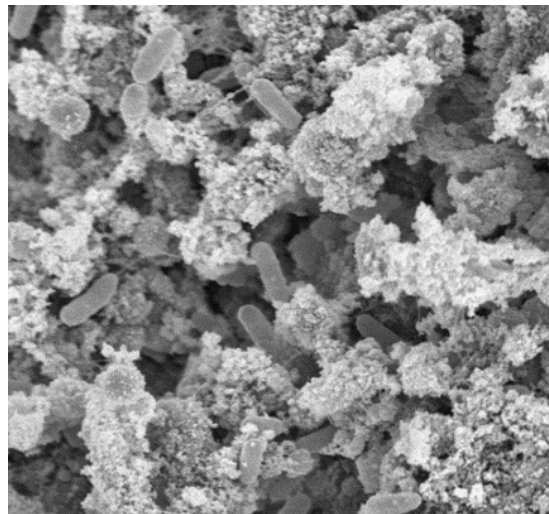
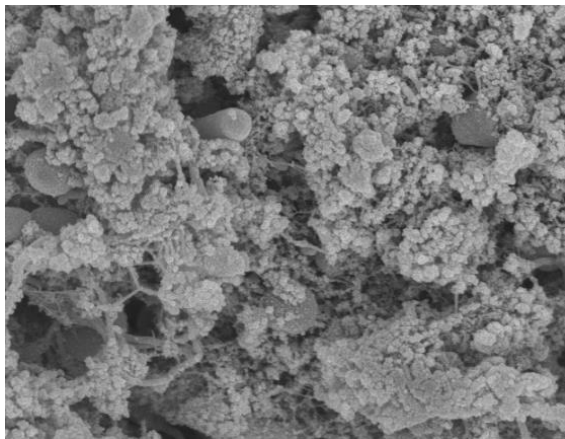
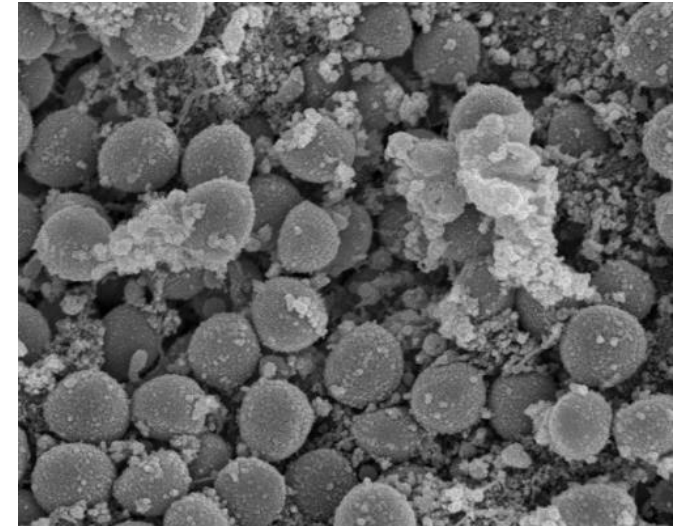
**High: 3**



**Medium: 2**

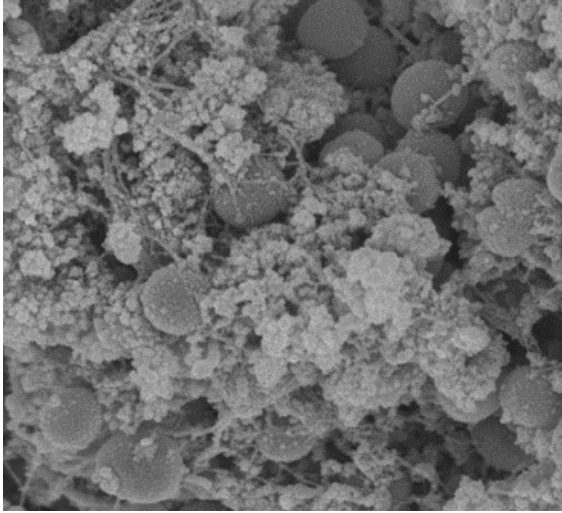


**Low: 1**

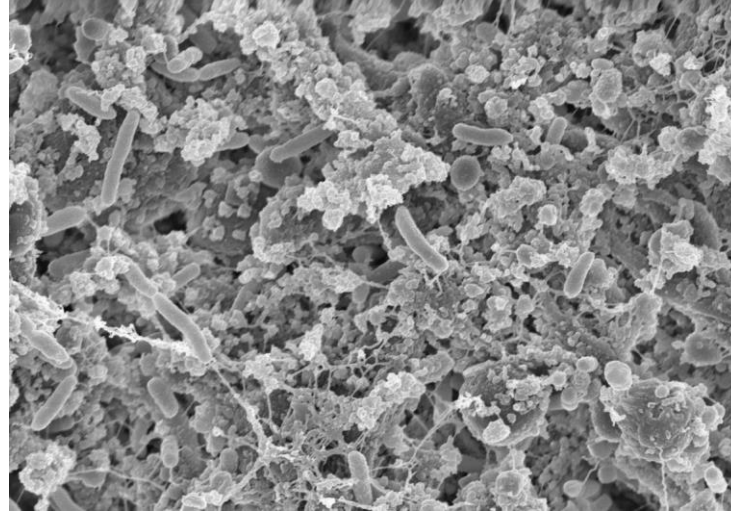


# EPS integrity/abundance examples: Combination EPS

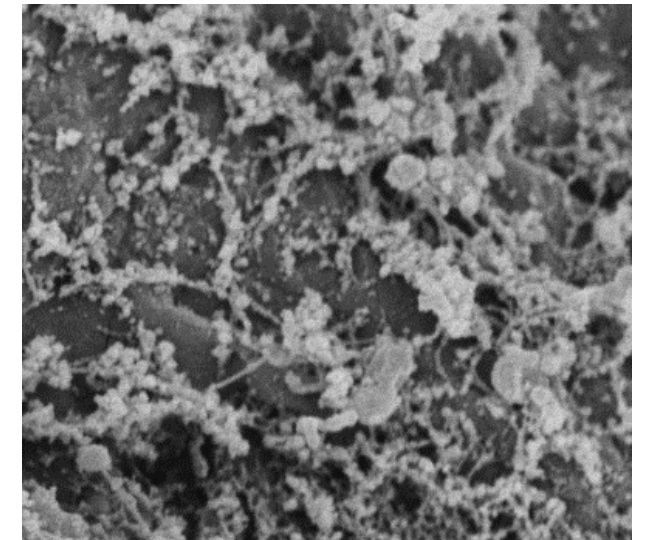
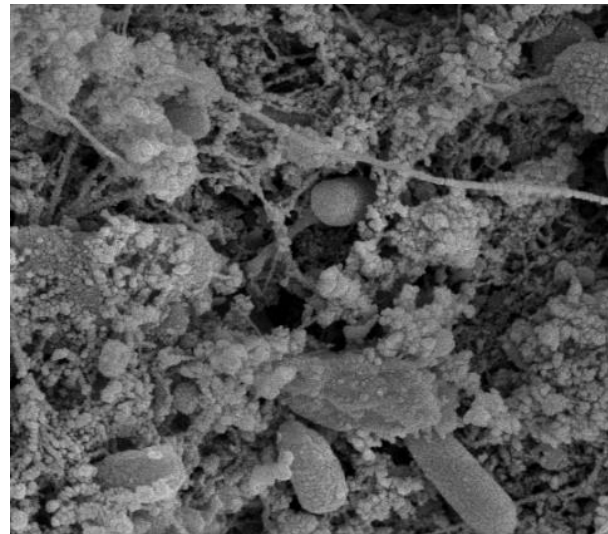
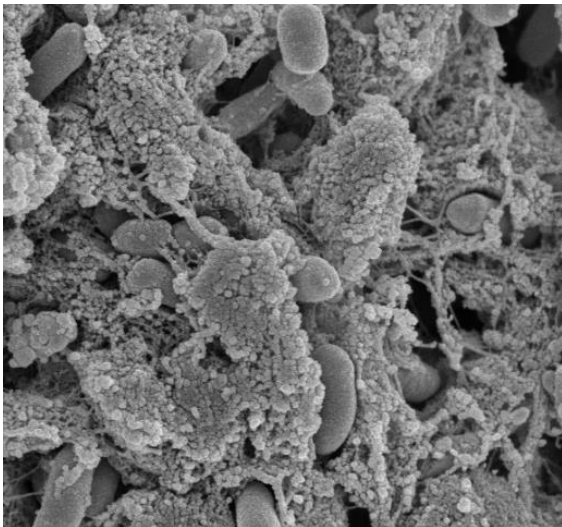
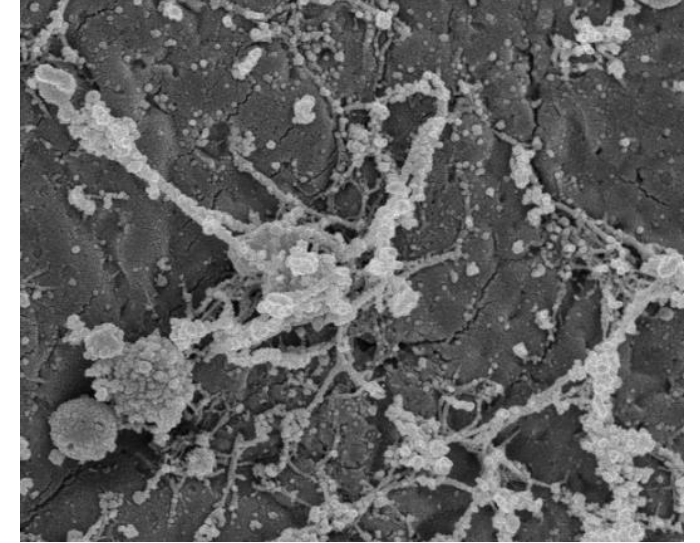
**High: 3**



**Medium: 2**

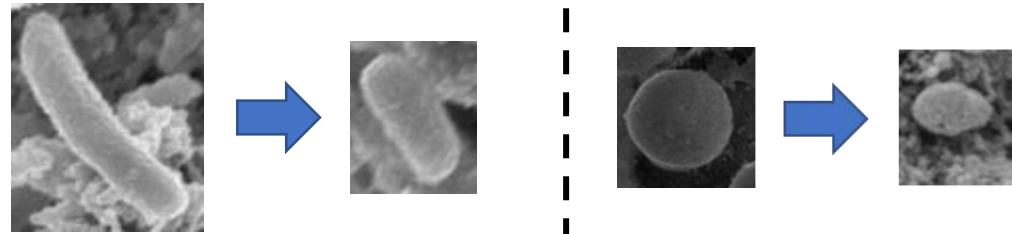


**Low: 1**



# Microbial cell integrity examples

- Shortening
- Compacting

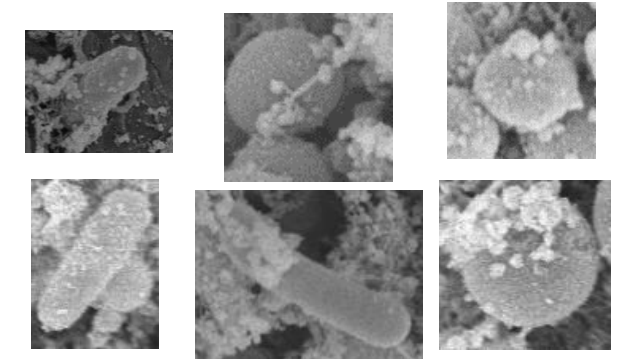


**NOT Shortening/Compacting**  
Appearance of shrinking due to depth of field of view (in comparison to larger-looking cells closer to the surface)

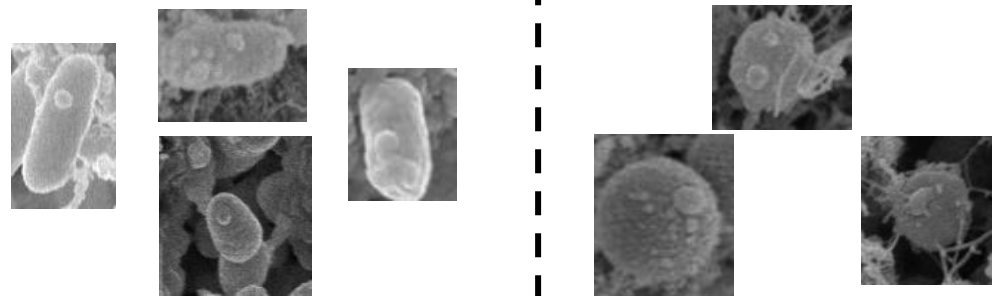
- Dimpling



**NOT Dimpling/Blistering**

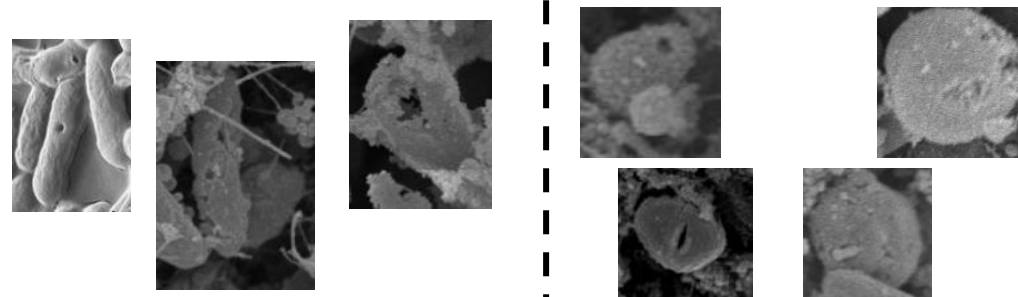


- Blistering



EPS Deposition:  
Bright, speckled, not a part of the membrane

- Active Lysis



Active lysis is evident when the bacterial membrane breaks down (fractures, holes, fissures)

# Microbial cell integrity scoring

- Compacting, dimpling, blistering, lysis evident in:
  - **High (3):**  $\geq 25\%$  of cells
  - **Medium (2):** 10-25% of cells
  - **Low: (1):**  $\leq 10\%$  of cells

# Microbial abundance (EPS abundance must be scored first)

- **High (3):**  $\geq 75$  cells/field of view (10,000X mag) in *low-density EPS* or cells visibly prevalent throughout *high-density EPS*
- **Medium (2):** 25-75 cells/field of view (10,000X mag) in *low density EPS* or cells prevalently associated with *medium-density EPS* or cells sparsely associated with *high-density EPS*
- **Low (1):**  $\leq 25$  cells/field of view (10,000X mag) in *low-density EPS* or cells sparsely associated with *medium- or high-density EPS*



# Example scoring sheet (General impressions from 3-4 fields of view per sample)

Sample	EPS integrity/abundance	Microbial cell integrity	Microbial abundance
S1	3	3	3
S2	2	3	2
S3	1	2	1
S4	2	1	3
S5	1	1	2
S6	2	1	3
S7	2	2	1