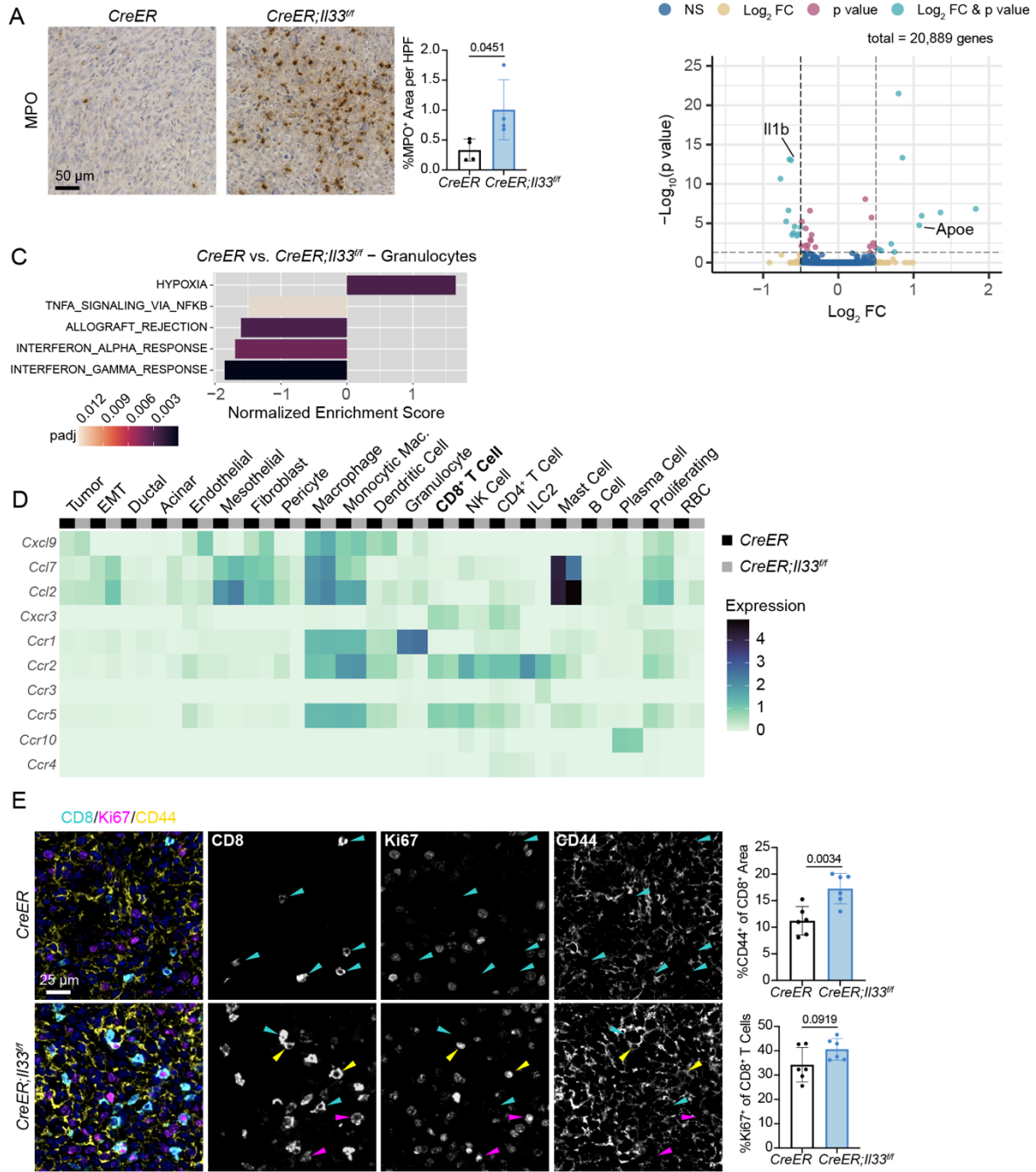


**Figure S5**



**Figure S5: Inactivation of stromal IL-33 enables cytotoxic T cell activity.** (A) IHC staining of myeloperoxidase (MPO) in *CreER* and *CreER;Il33<sup>ff</sup>* tumors. (B) Volcano plot of differentially expressed genes within granulocytes in *CreER* and *CreER;Il33<sup>ff</sup>* tumors (Bonferroni-corrected p value <0.05 and fold-change  $\geq 0.5$ ). (C) Waterfall plot depicting differential pathway enrichment in granulocytes based on the Hallmark collection of annotations. Positive normalized enrichment scores are enriched in the control group. padj = Bonferroni corrected p value. (D) Heatmap depicting expression of CD8<sup>+</sup> T cell chemokines and their receptors in *CreER* and *CreER;Il33<sup>ff</sup>* tumors. CD8<sup>+</sup> T cells are highlighted. (E) Co-IF staining of *CreER* and *CreER;Il33<sup>ff</sup>* tumors; CD8 (cyan), Ki67 (magenta), CD44 (yellow) and DAPI (blue). Cyan arrows indicate representative CD8<sup>+</sup> Ki67<sup>-</sup> CD44<sup>-</sup> cells, magenta arrows indicate CD8<sup>+</sup> Ki67<sup>+</sup> CD44<sup>-</sup> cells, and yellow arrows indicate CD8<sup>+</sup> Ki67<sup>+</sup> CD44<sup>+</sup> cells. For staining quantification, each dot represents one animal, and values were compared using two-tailed Student's *t* test. Histogram data are mean  $\pm$  standard deviation.