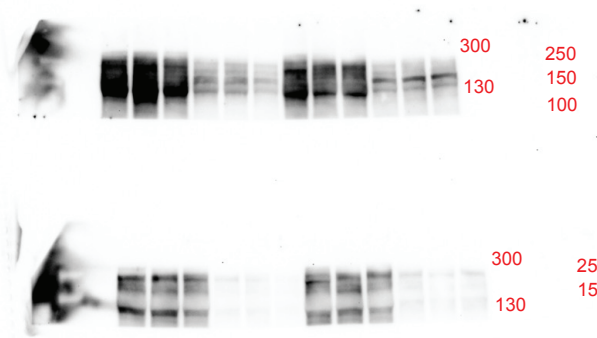
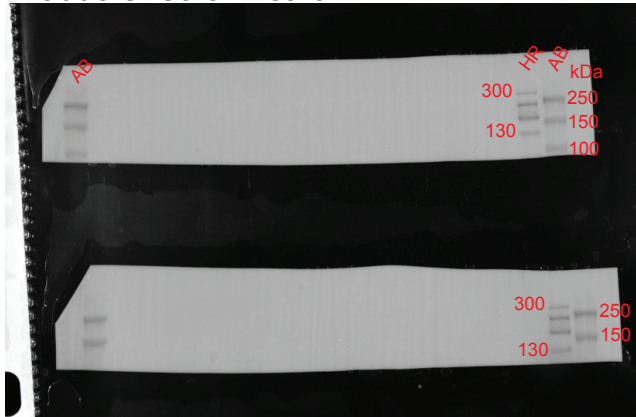


Uncropped blots: Extended data Figure 1c

TOP:anti-NCOR1: ECL
 BOTTOM:anti-NCOR2: ECL



Ladders: Calorimetric



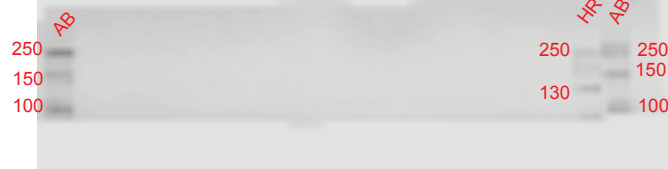
Membrane1

Membrane2

anti-VINCULIN: LICOR 800nm Channel

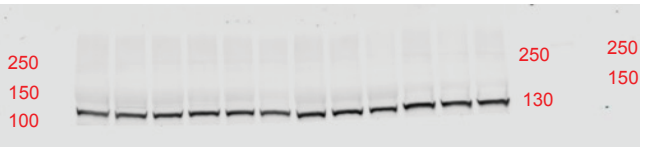


Ladder: 700nm channel



Membrane1

anti-VINCULIN: LICOR 800nm Channel



Ladder: LICOR 700nm channel



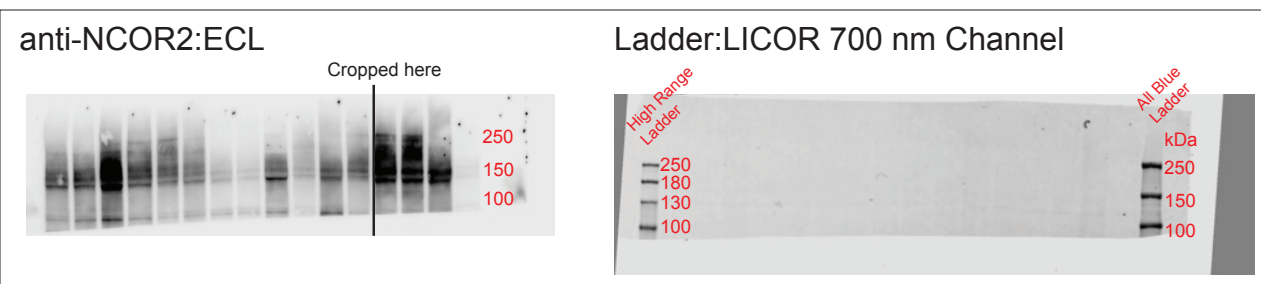
Membrane2

Ladders:
 HR: High Range 40-300 kDa
 AB: All Blue (10-250 kDa)
 *Note: HR bands 300 and 70 cannot be visualized by LICOR due to the dye. All bands are visible by calorimetric scan.

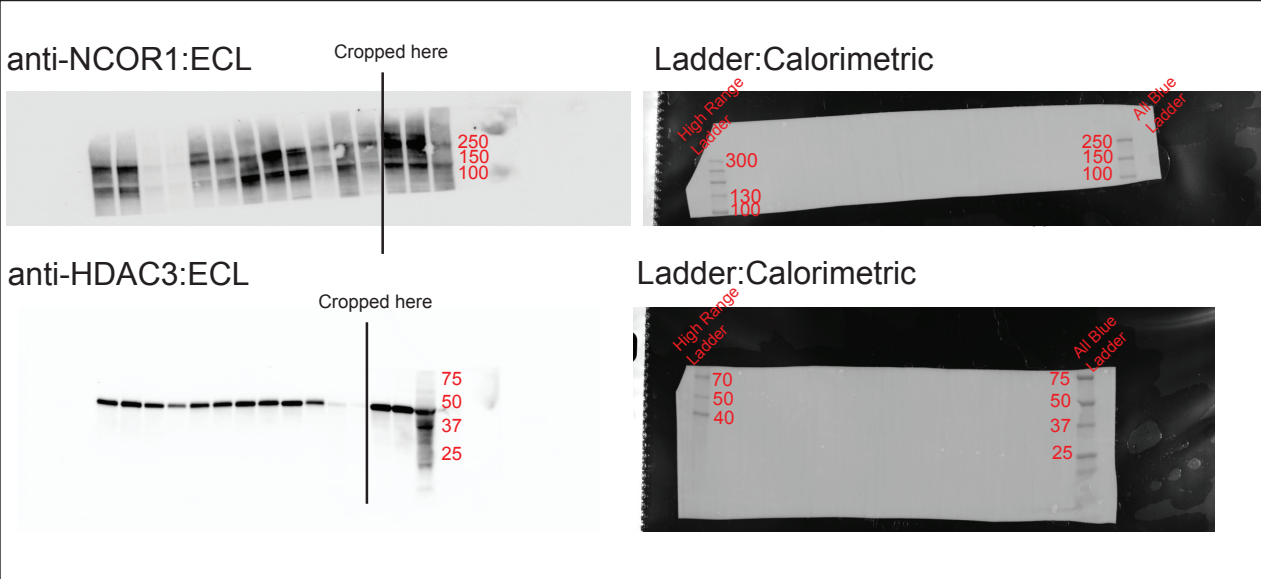
Samples:
 Same protein lysates were loaded into 2 separate gels.

Uncropped blots: Extended data Figure 1k

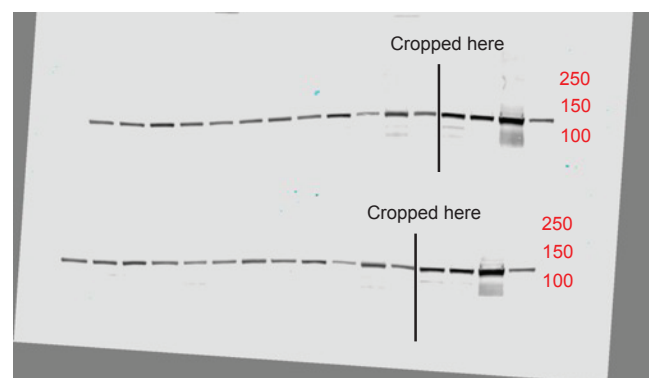
Membrane 1



Membrane 2



anti-VINCULIN: LICOR 800 nm Channel



Ladder: LICOR 700 nm Channel



Ladders:

HR: High Range 40-300 kDa

AB: All Blue (10-250 kDa)

**Note: HR bands 300 and 70 cannot be visualized by LICOR due to the dye. All bands are visible by calorimetric scan.

Samples:

Same protein lysates were loaded into 2 separate gels. Each membrane was cut in half to accommodate blotting for high and low molecular weight proteins.