

1 **SUPPLEMENTARY MATERIAL**

2 **Supplementary Table 1. Completion and compliance rates for patient-reported outcome questionnaires among patients with PD-L1 CPS**

3 ≥ 1

Neoadjuvant Phase	QLQ-C30		QLQ-BR23		EQ-5D	
	Pembrolizumab + Chemotherapy <i>N</i> = 635	Placebo + Chemotherapy <i>N</i> = 312	Pembrolizumab + Chemotherapy <i>N</i> = 632	Placebo + Chemotherapy <i>N</i> = 311	Pembrolizumab + Chemotherapy <i>N</i> = 635	Placebo + Chemotherapy <i>N</i> = 312
Baseline						
Completion, n (%) ^a	582 (91.7)	298 (95.5)	577 (91.3)	293 (94.2)	587 (92.4)	299 (95.8)
Compliance, n/N (%) ^b	582/635 (91.7)	298/311 (95.8)	577/632 (91.3)	293/310 (94.5)	587/635 (92.4)	299/311 (96.1)
Week 12						
Completion, n (%) ^a	530 (83.5)	266 (85.3)	526 (83.2)	265 (85.2)	538 (84.7)	272 (87.2)
Compliance, n/N (%) ^b	530/588 (90.1)	266/294 (90.5)	526/586 (89.8)	265/293 (90.4)	538/588 (91.5)	272/295 (92.2)
Week 21						
Completion, n (%) ^a	501 (78.9)	251 (80.4)	497 (78.6)	249 (80.1)	502 (79.1)	253 (81.1)
Compliance, n/N (%) ^b	501/569 (88.0)	251/287 (87.5)	497/567 (87.7)	249/286 (87.1)	502/569 (88.2)	253/287 (88.2)

Adjuvant Phase	Pembrolizumab N = 444	Placebo N = 256	Pembrolizumab N = 443	Placebo N = 254	Pembrolizumab N = 445	Placebo N = 258
Baseline						
Completion, n (%) ^a	399 (89.9)	232 (90.6)	397 (89.6)	231 (90.9)	404 (90.8)	234 (90.7)
Compliance, n/N (%) ^b	399/444 (89.9)	232/256 (90.6)	397/443 (89.6)	231/254 (90.9)	404/445 (90.8)	234/258 (90.7)
Week 12						
Completion, n (%) ^a	398 (89.6)	221 (86.3)	396 (89.4)	219 (86.2)	398 (89.4)	226 (87.6)
Compliance, n/N (%) ^b	398/435 (91.5)	221/251 (88.0)	396/434 (91.2)	219/249 (88.0)	398/436 (91.3)	226/253 (89.3)
Week 24						
Completion, n (%) ^a	363 (81.8)	204 (79.7)	361 (81.5)	202 (79.5)	363 (81.6)	204 (79.1)
Compliance, n/N (%) ^b	363/398 (91.2)	204/233 (87.6)	361/397 (90.9)	202/231 (87.4)	363/399 (91.0)	204/235 (86.8)

1 CPS, combined positive score; EQ-5D, EuroQol 5-Dimension Questionnaire; PD-L1, programmed cell death ligand 1; PRO, patient-reported
2 outcome; QLQ-BR23, European Organisation for Research and Treatment of Cancer Breast Cancer–Specific Quality of Life Questionnaire;
3 QLQ-C30, European Organisation for Research and Treatment of Cancer Quality of Life Questionnaire–Core 30.

4 ^aCompletion rate: number of patients who completed ≥ 1 score/item over the number of patients in the PRO full analysis set population with PD-
5 L1 CPS ≥ 1 at each time point.

6 ^bCompliance rate: number of patients who completed ≥ 1 score/item over the number of patients expected to complete at each time point
7 excluding those missing by design (eg, due to death, discontinuation, translation unavailable etc.).

1 **Supplementary Table 2. LS mean score changes from baseline for each PRO in the neoadjuvant and adjuvant treatment phases among**
 2 **patients with PD-L1 CPS \geq 1**

PRO Instrument	Neoadjuvant Phase		Adjuvant Phase	
	Pembrolizumab + Chemotherapy	Placebo + Chemotherapy	Pembrolizumab	Placebo
<i>QLQ-C30 GHS/QoL</i>				
Mean (SD) at baseline ^a	77.39 (17.64) <i>N</i> = 582	78.41 (17.00) <i>N</i> = 298	74.00 (15.70) <i>N</i> = 399	72.88 (18.12) <i>N</i> = 232
Mean (SD) at week 21/24 ^b	66.55 (19.28) <i>N</i> = 501	67.26 (18.14) <i>N</i> = 251	75.60 (16.67) <i>N</i> = 363	75.65 (16.26) <i>N</i> = 204
LS mean (95% CI) change from baseline to week 21/24 ^{a,b}	-11.63 (-13.35 to -9.91) <i>N</i> = 635	-10.95 (-13.25 to -8.64) <i>N</i> = 312	1.88 (0.31 to 3.46) <i>N</i> = 444	2.49 (0.47 to 4.51) <i>N</i> = 256
Difference in LS means (95% CI)	-0.69 (-3.36 to 1.99)		-0.61 (-3.01 to 1.80)	
<i>QLQ-C30 Physical Functioning</i>				
Mean (SD) at baseline ^a	91.98 (12.61) <i>N</i> = 582	91.16 (13.34) <i>N</i> = 298	83.24 (15.71) <i>N</i> = 399	81.52 (16.03) <i>N</i> = 232
Mean (SD) at week 21/24 ^b	76.61 (19.37) <i>N</i> = 501	78.51 (17.19) <i>N</i> = 251	84.39 (15.93) <i>N</i> = 363	85.26 (14.81) <i>N</i> = 204

LS mean (95% CI) change from baseline to week 21/24 ^{a,b}	-15.86 (-17.37 to -14.35) N = 635	-12.86 (-14.96 to -10.75) N = 312	1.43 (0.17 to 2.70) N = 444	3.31 (1.67 to 4.95) N = 256
Difference in LS means (95% CI)	-3.01 (-5.55 to -0.46)		-1.87 (-3.85 to 0.10)	

QLQ-C30 Emotional Functioning

Mean (SD) at baseline ^a	76.06 (19.52) N = 582	74.75 (20.79) N = 298	81.73 (18.06) N = 399	78.16 (20.64) N = 232
Mean (SD) at week 21/24 ^b	74.09 (20.92) N = 501	74.37 (22.11) N = 251	78.88 (20.17) N = 363	77.70 (20.18) N = 204
LS mean (95% CI) change from baseline to week 21/24 ^{a,b}	-1.74 (-3.44 to -0.03) N = 635	-0.67 (-2.99 to 1.65) N = 312	-1.94 (-3.67 to -0.21) N = 444	-0.94 (-3.19 to 1.32) N = 256
Difference in LS means (95% CI)	-1.07 (-3.82 to 1.68)		-1.00 (-3.74 to 1.74)	

QLQ-BR23 Breast Symptoms

Mean (SD) at baseline ^a	18.34 (20.03) N = 577	18.29 (18.85) N = 293	22.19 (18.97) N = 397	23.77 (20.51) N = 231
Mean (SD) at week 21/24 ^b	9.05 (13.22) N = 497	9.04 (14.98) N = 249	17.29 (17.55) N = 361	17.08 (17.71) N = 202
LS mean (95% CI) change from baseline to week 21/24 ^{a,b}	-9.43 (-11.03 to -7.84) N = 632	-9.19 (-11.17 to -7.21) N = 311	-5.47 (-7.26 to -3.67) N = 443	-6.27 (-8.53 to -4.00) N = 254
Difference in LS means (95% CI)	-0.24 (-2.28 to 1.79)		0.80 (-1.82 to 3.42)	

EQ-5D VAS

Mean (SD) at baseline ^a	81.17 (18.17) <i>N</i> = 587	82.00 (17.51) <i>N</i> = 299	78.29 (14.87) <i>N</i> = 404	78.69 (14.56) <i>N</i> = 234
Mean (SD) at week 21/24 ^b	72.37 (17.97) <i>N</i> = 502	74.19 (16.68) <i>N</i> = 253	80.90 (14.46) <i>N</i> = 363	80.81 (13.29) <i>N</i> = 204
LS mean (95% CI) change from baseline to week 21/24 ^{a,b}	-9.26 (-10.93 to -7.59) <i>N</i> = 635	-7.71 (-9.90 to -5.52) <i>N</i> = 312	2.50 (1.29 to 3.71) <i>N</i> = 445	2.15 (0.59 to 3.71) <i>N</i> = 258
Difference in LS means (95% CI)	-1.55 (-4.03 to 0.93)		0.35 (-1.52 to 2.21)	

1 CPS, combined positive score; EQ-5D VAS, EuroQoL 5-Dimension Questionnaire Visual Analog Scale; GHS/QoL, global health status/quality
2 of life; LS, least squares; PD-L1, programmed cell death ligand 1; PRO, patient-reported outcome; QLQ-BR23, European Organisation for
3 Research and Treatment of Cancer Breast Cancer-Specific Quality of Life Questionnaire; QLQ-C30, European Organisation for Research and
4 Treatment of Cancer Quality of Life Questionnaire-Core 30; SD, standard deviation.

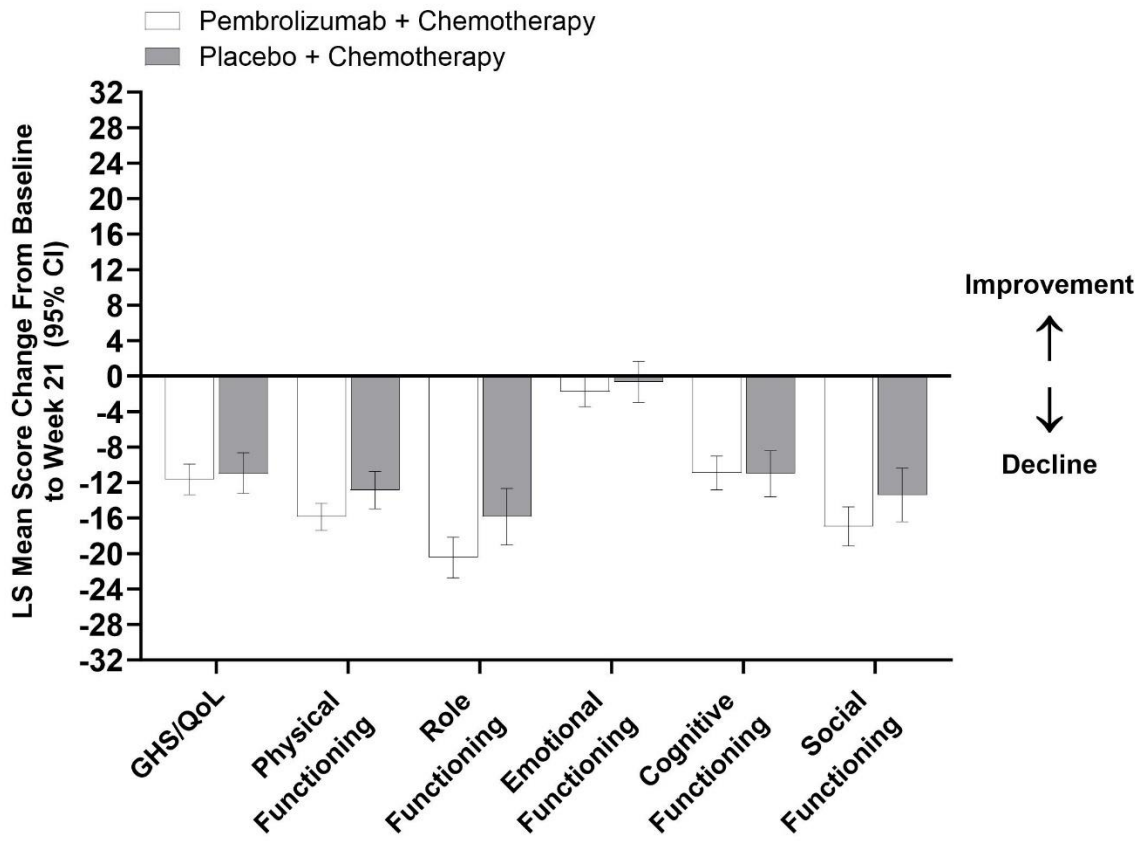
5 ^aBaseline refers to the baseline time point for the respective phase (neoadjuvant or adjuvant).

6 ^bThe analysis time point was week 21 in the neoadjuvant phase and week 24 in the adjuvant phase.

1 **Supplementary Figure 1.** Change from baseline to week 21 in the neoadjuvant phase among
2 patients with PD-L1 CPS \geq 1: (A) QLQ-C30 GHS/QoL and functional scales, (B) QLQ-C30
3 symptom scales or items, (C) QLQ-BR23 functional scales or items, and (D) QLQ-BR23
4 symptom scales or items. For GHS/QoL score and all functional scales, a higher score
5 denotes better HRQoL or function. For symptoms scales or items, a higher score denotes
6 worse symptoms.

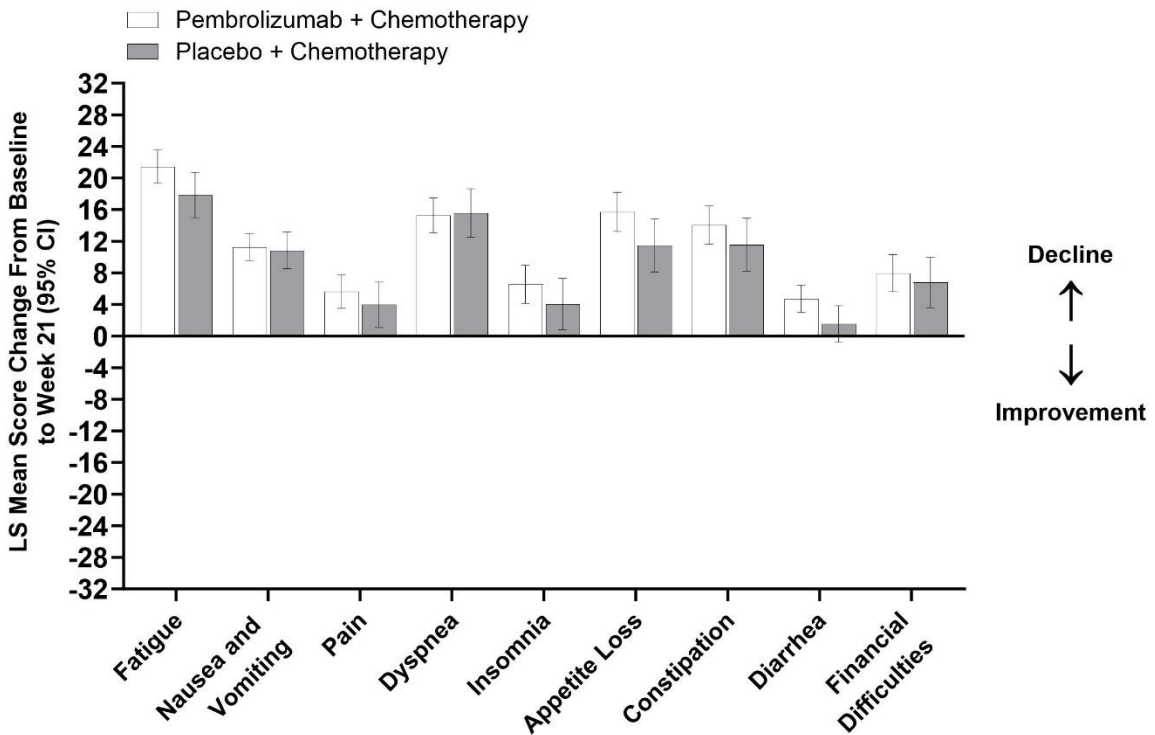
7 CPS, combined positive score; GHS/QoL, global health status/quality of life; HRQoL, health-
8 related quality of life; LS, least squares; PD-L1, programmed cell death ligand 1; QLQ-
9 BR23, European Organisation for Research and Treatment of Cancer Breast Cancer–Specific
10 Quality of Life Questionnaire; QLQ-C30, European Organisation for Research and Treatment
11 of Cancer Quality of Life Questionnaire–Core 30.

1 **A. QLQ-C30 QHS/QoL and functional scales**



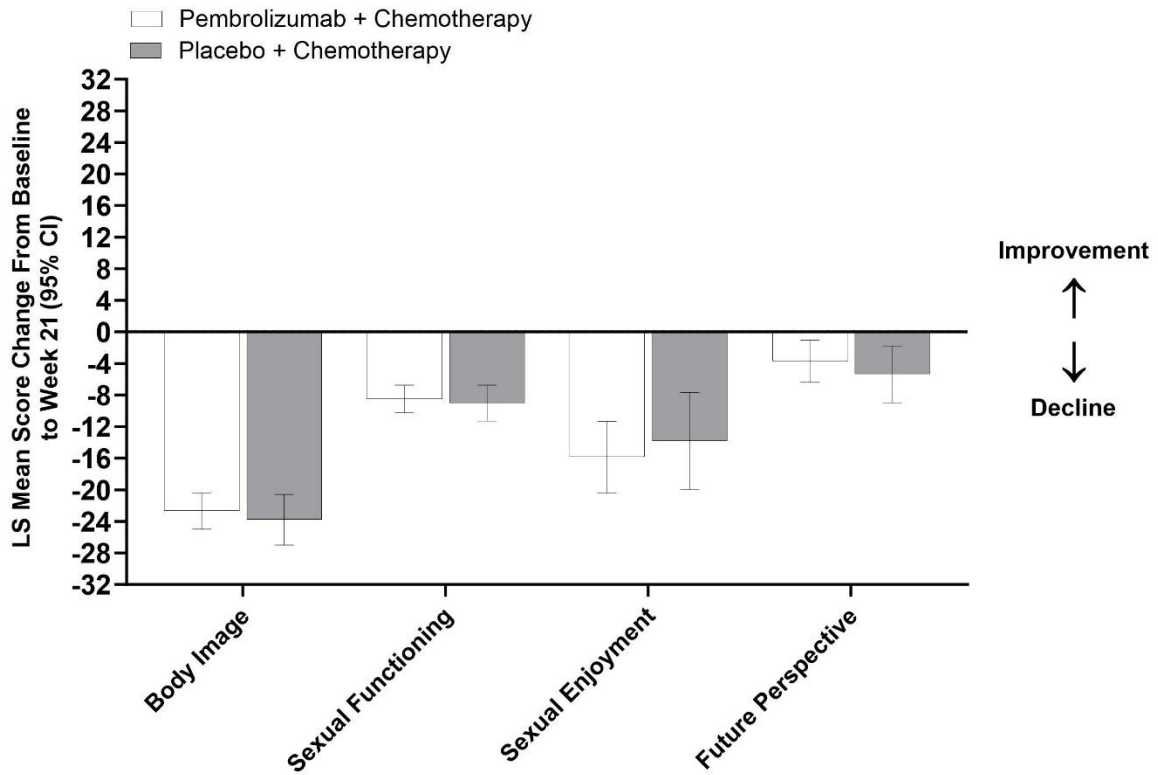
2

3 **B. QLQ-C30 symptom scales/items**



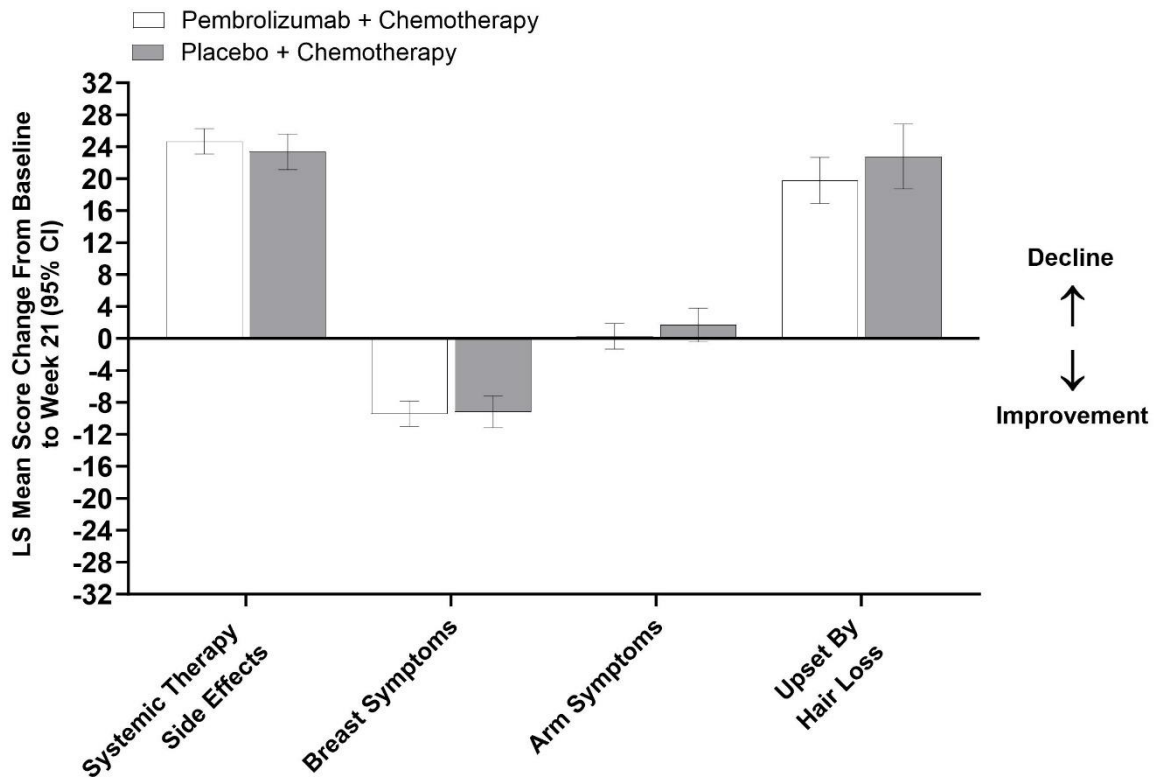
4

1 **C. QLQ-BR23 functional scales/items**



2

3 **D. QLQ-BR23 symptom scales/items**

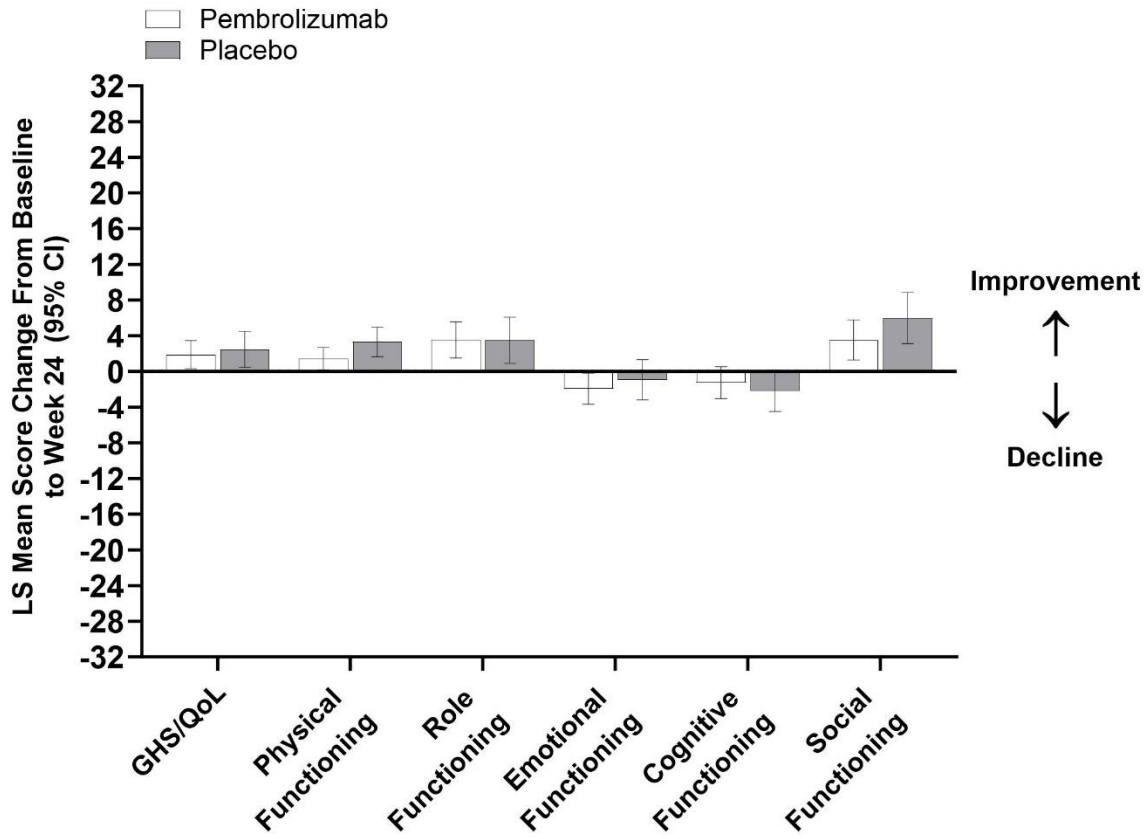


4

1 **Supplementary Figure 2.** Change from baseline to week 24 in the adjuvant phase among
2 patients with PD-L1 CPS \geq 1: (A) QLQ-C30 GHS/QoL and functional scales, (B) QLQ-C30
3 symptom scales or items, (C) QLQ-BR23 functional scales or items, and (D) QLQ-BR23
4 symptom scales or items. For GHS/QoL score and all functional scales, a higher score
5 denotes better HRQoL or function. For symptoms scales or items, a higher score denotes
6 worse symptoms.

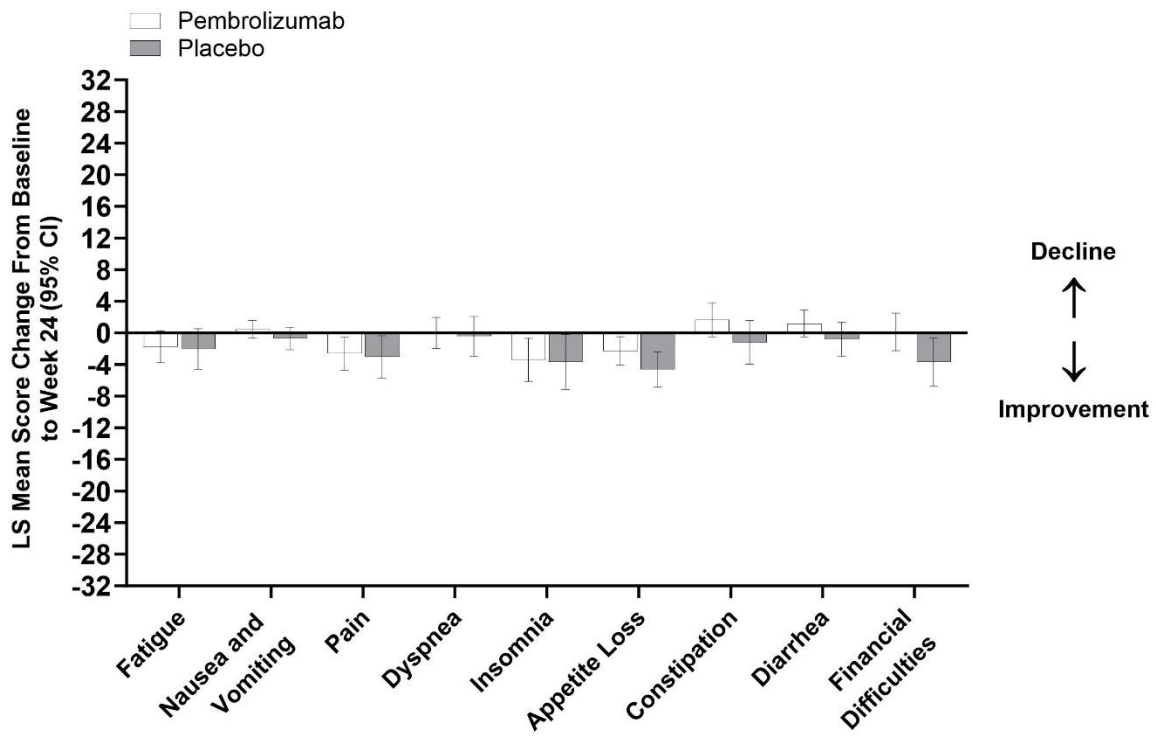
7 CPS, combined positive score; GHS/QoL, global health status/quality of life; HRQoL, health-
8 related quality of life; LS, least squares; PD-L1, programmed cell death ligand 1; QLQ-
9 BR23, European Organisation for Research and Treatment of Cancer Breast Cancer–Specific
10 Quality of Life Questionnaire; QLQ-C30, European Organisation for Research and Treatment
11 of Cancer Quality of Life Questionnaire–Core 30.

1 **A. QLQ-C30 QHS/QoL and functional scales**



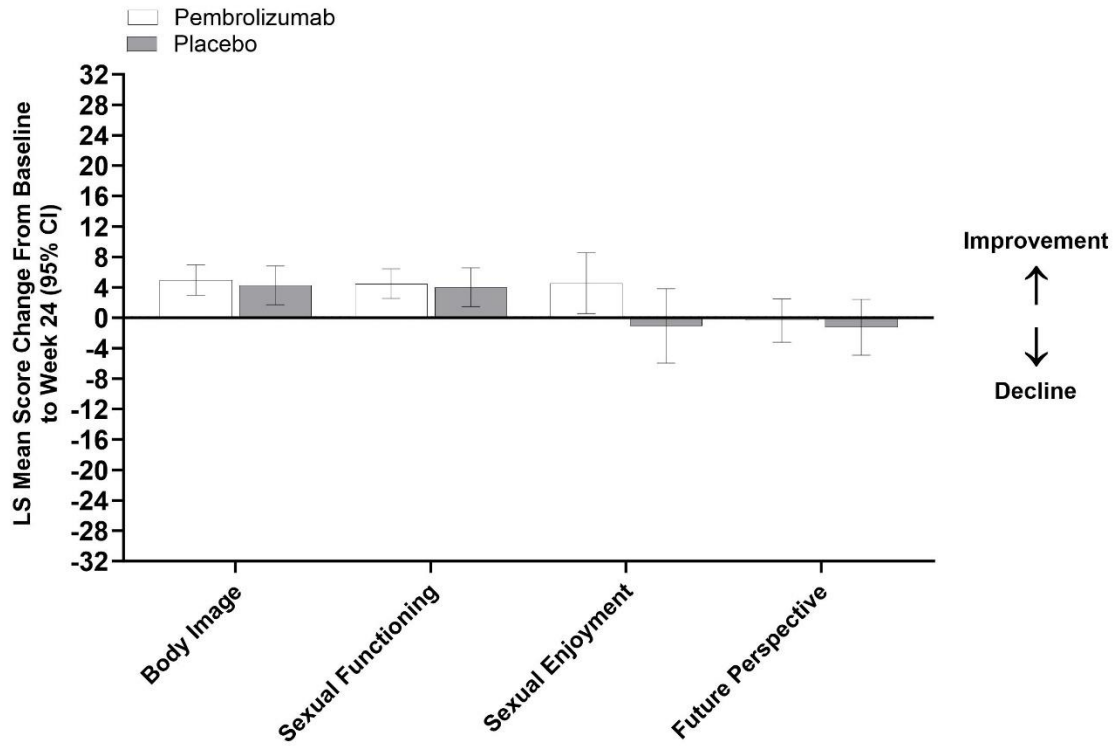
2

3 **B. QLQ-C30 symptom scales/items**



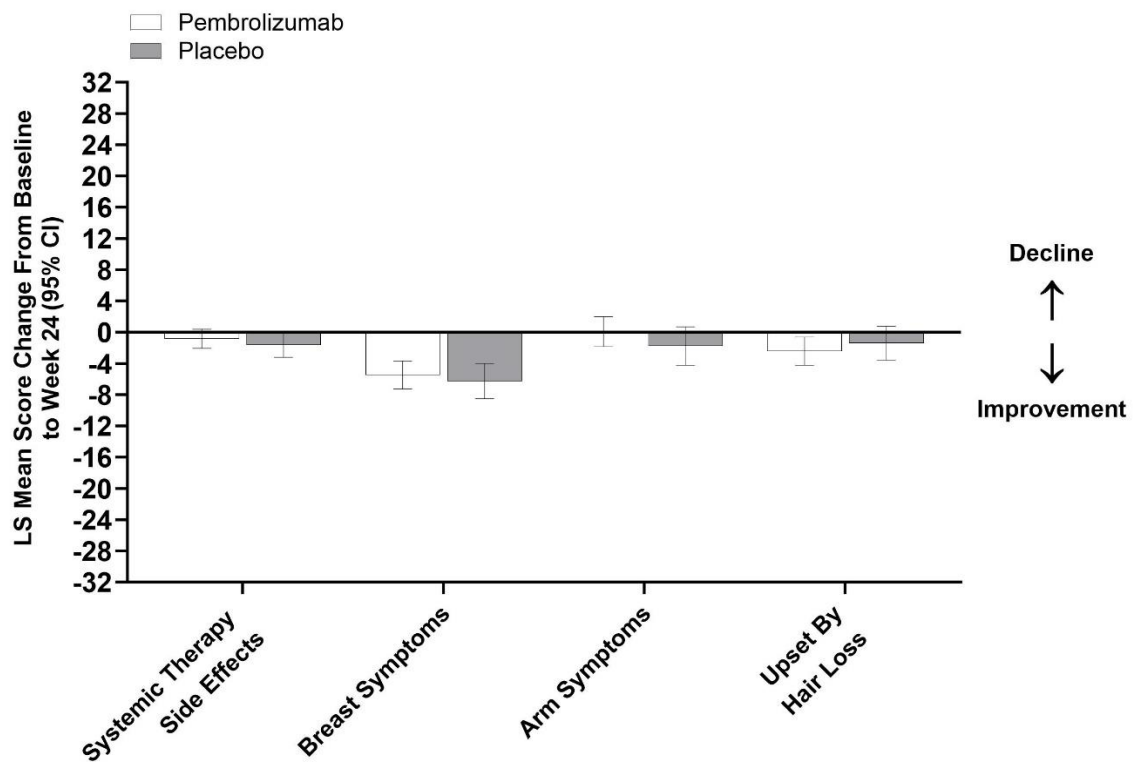
4

1 C. QLQ-BR23 functional scales/items



2

3 D. QLQ-BR23 symptom scales/items



4