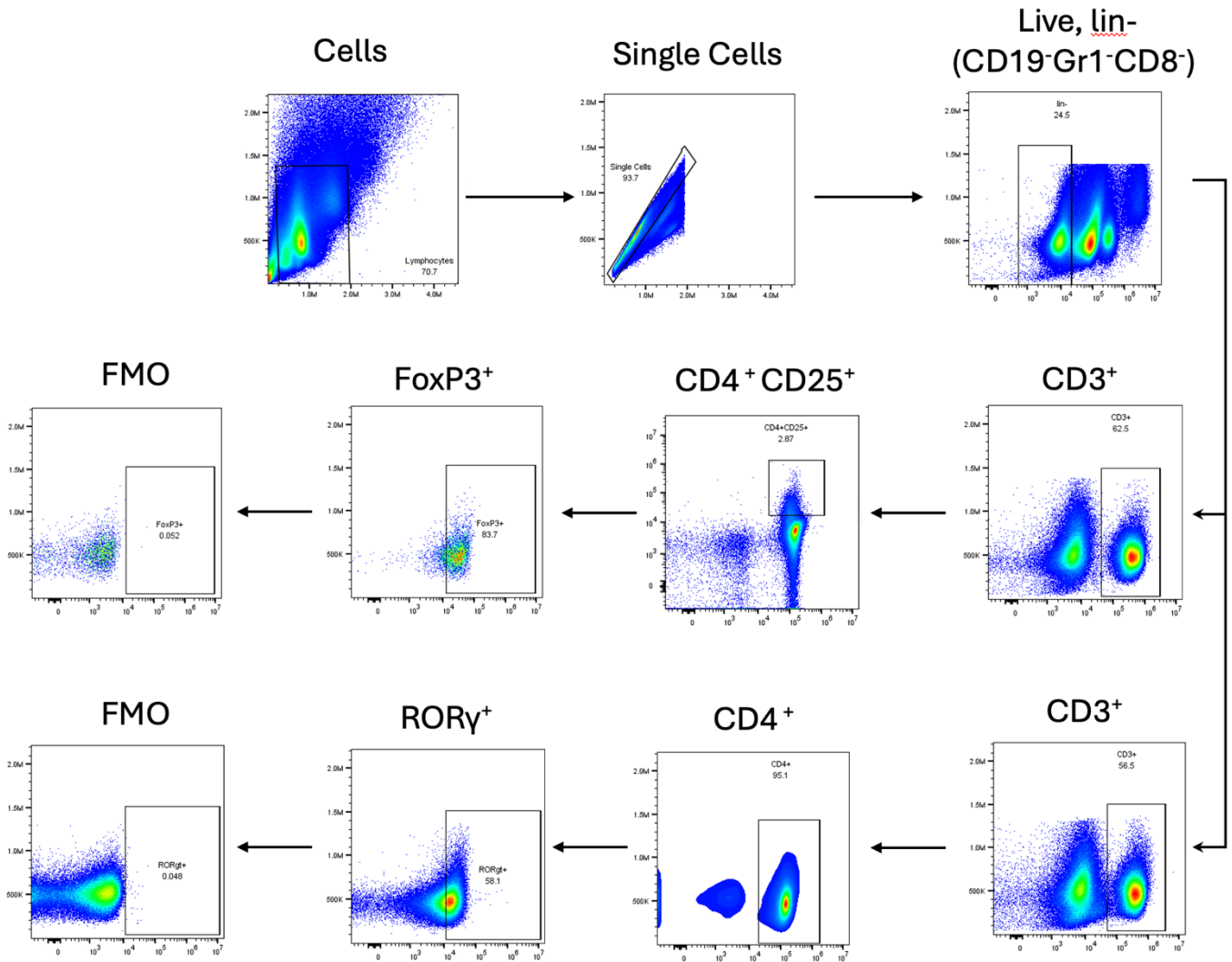
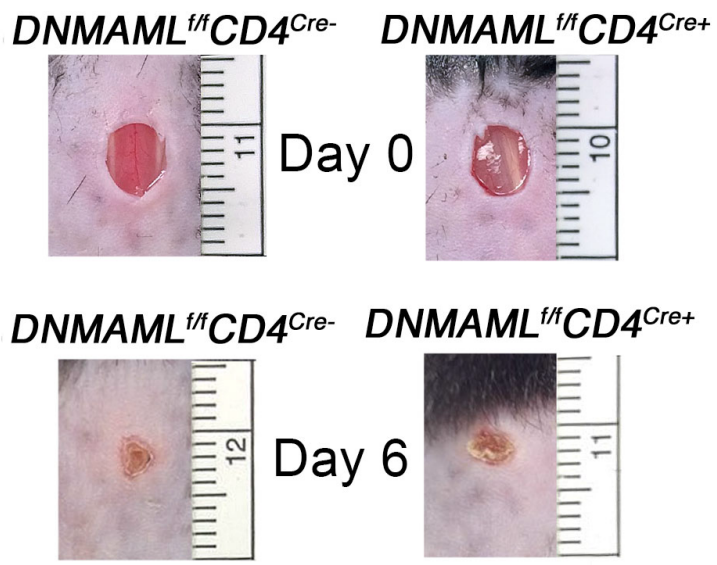
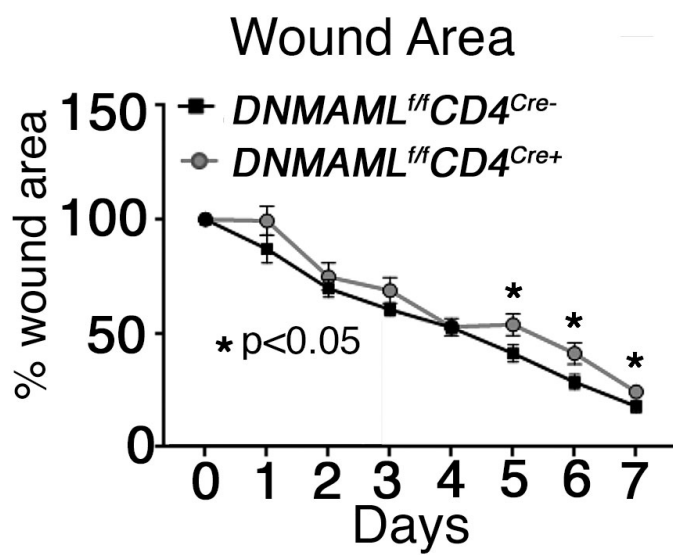


Supplemental Figures:



Supplemental Figure 1: Flow cytometry gating strategy for wound and splenic T cells.



**Supplemental Figure 2:** Wound healing curve for mice (n=8) with loss of Notch signaling in  $CD4^+$  cells ( $DNMAAML^{f/f}CD4^{Cre+}$ ) compared to littermate controls (n=7).