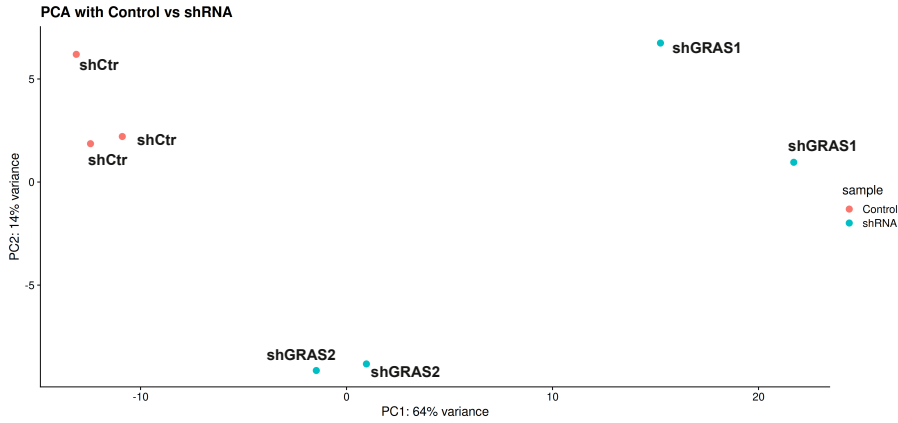


A



B

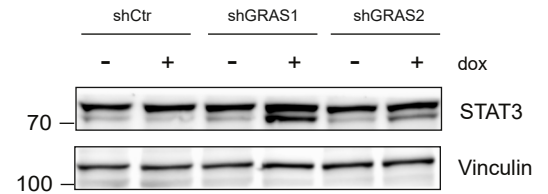


Figure S1. GRASLND knockdown induces melanoma phenotype switching **(A)** PCA plot of RNA sequencing samples. Red dots show three replicates of shCtrl samples, blue dots are shGRAS1 and shGRAS2 samples, with 2 replicates each. **(B)** Expression of STAT3 after GRASLND knockdown determined by western blotting. Vinculin, loading control. Representative data of two independent experiments.