

Supporting Information

Production of Multiple Cell-Laden Microtissue Spheroids with a Biomimetic Hepatic-Lobule-like Structure

Gyusik Hong, Jin Kim, Hyeongkwon Oh, Seokhwan Yun, Chul Min Kim, Yun-Mi Jeong, Won-Soo Yun, Jin-Hyung Shim, Ilho Jang, C-yoon Kim, and Songwan Jin*

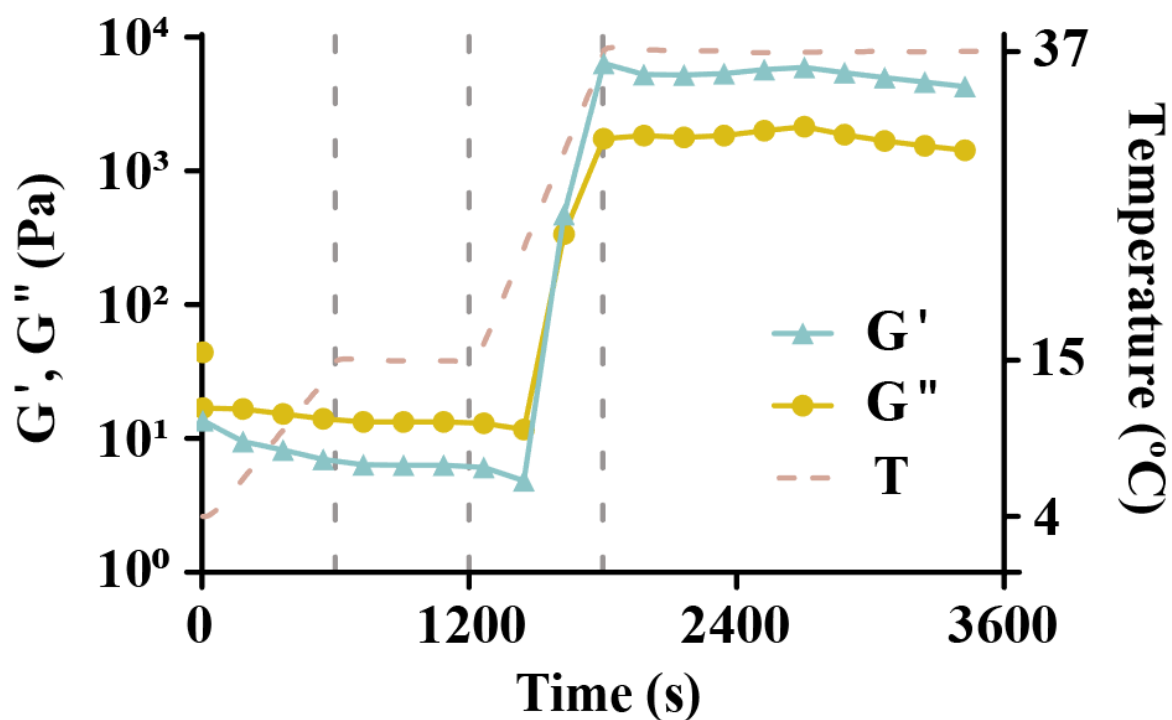


Figure S1. Rheological characterization of 4% collagen hydrogels. G' and G'' are the storage and loss modulus, respectively.

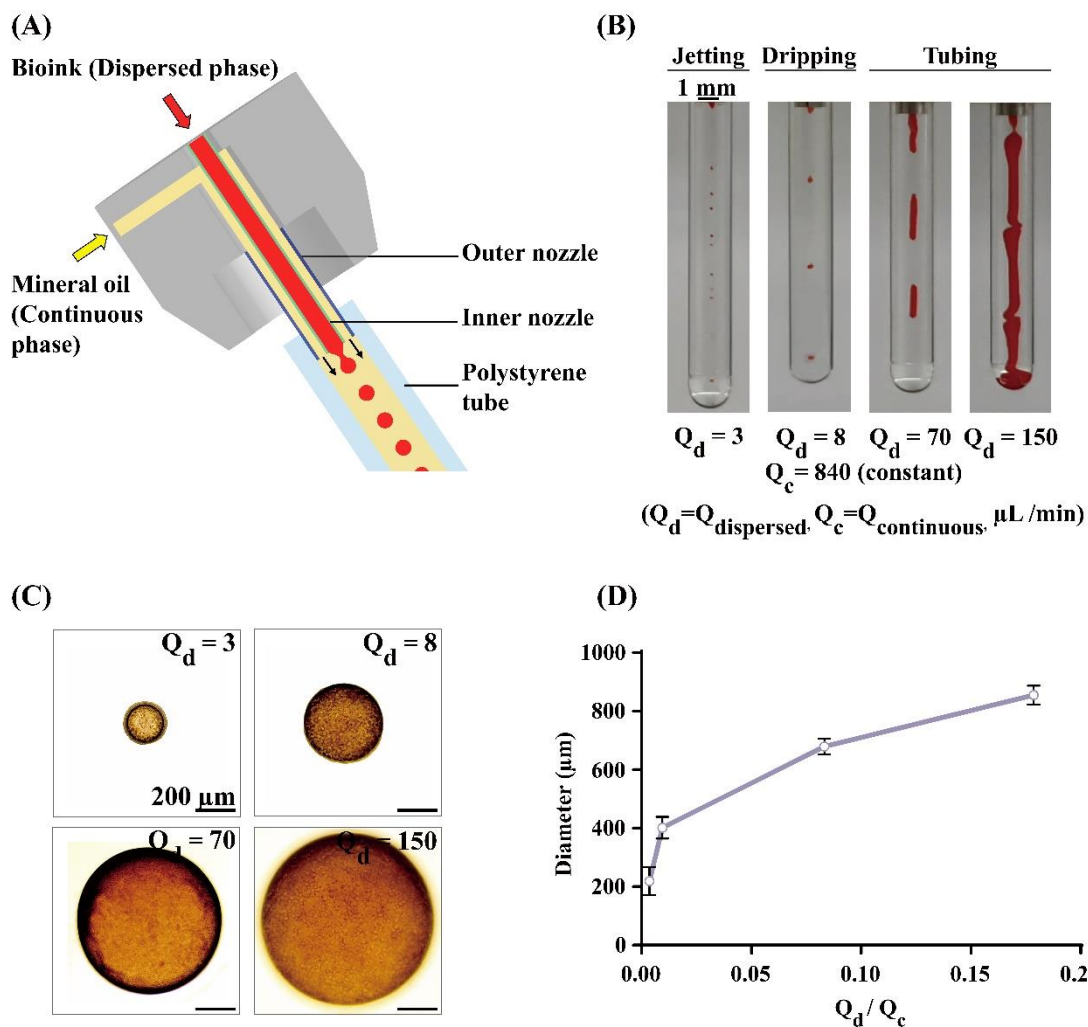


Figure S2. Change in droplet size. (A) Schematic illustration of the droplet generation process. (B) Optical photographs showing jetting to tubing transition under various flow rate conditions. (C) Optical photographs of droplets after exiting the main channel. (D) Size of droplets under various flow rate conditions.

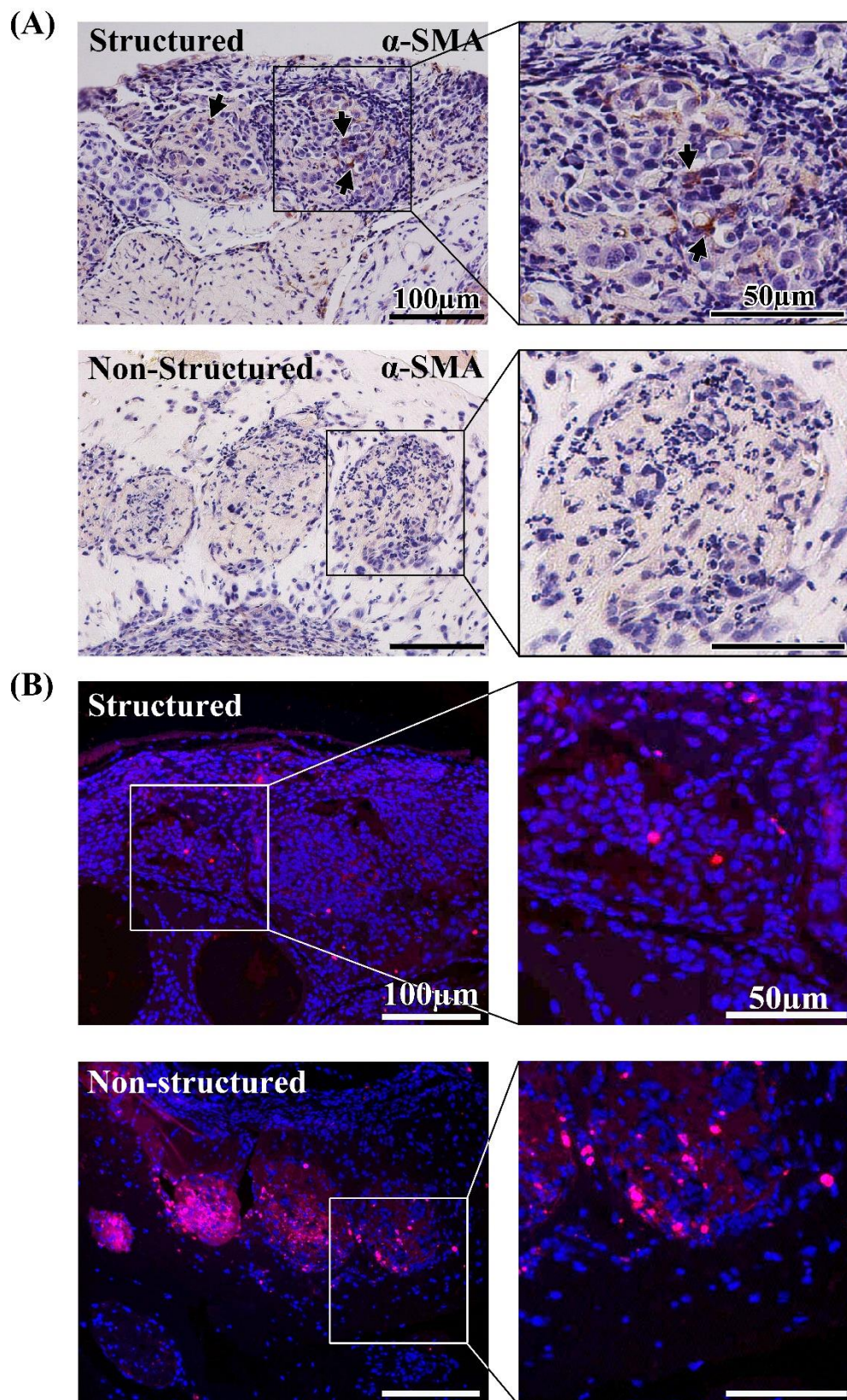


Figure S3. High-magnification images of the in-vivo Matrigel plug assay. (A) α -SMA staining images (Figure 6C) and the magnified images. (B) TUNEL staining images (Figure 6E) and the magnified images. Scale bars represent 100 μ m.

Movie S1. Droplet generation. The droplet generates at a speed of approximately 45 droplets/min.