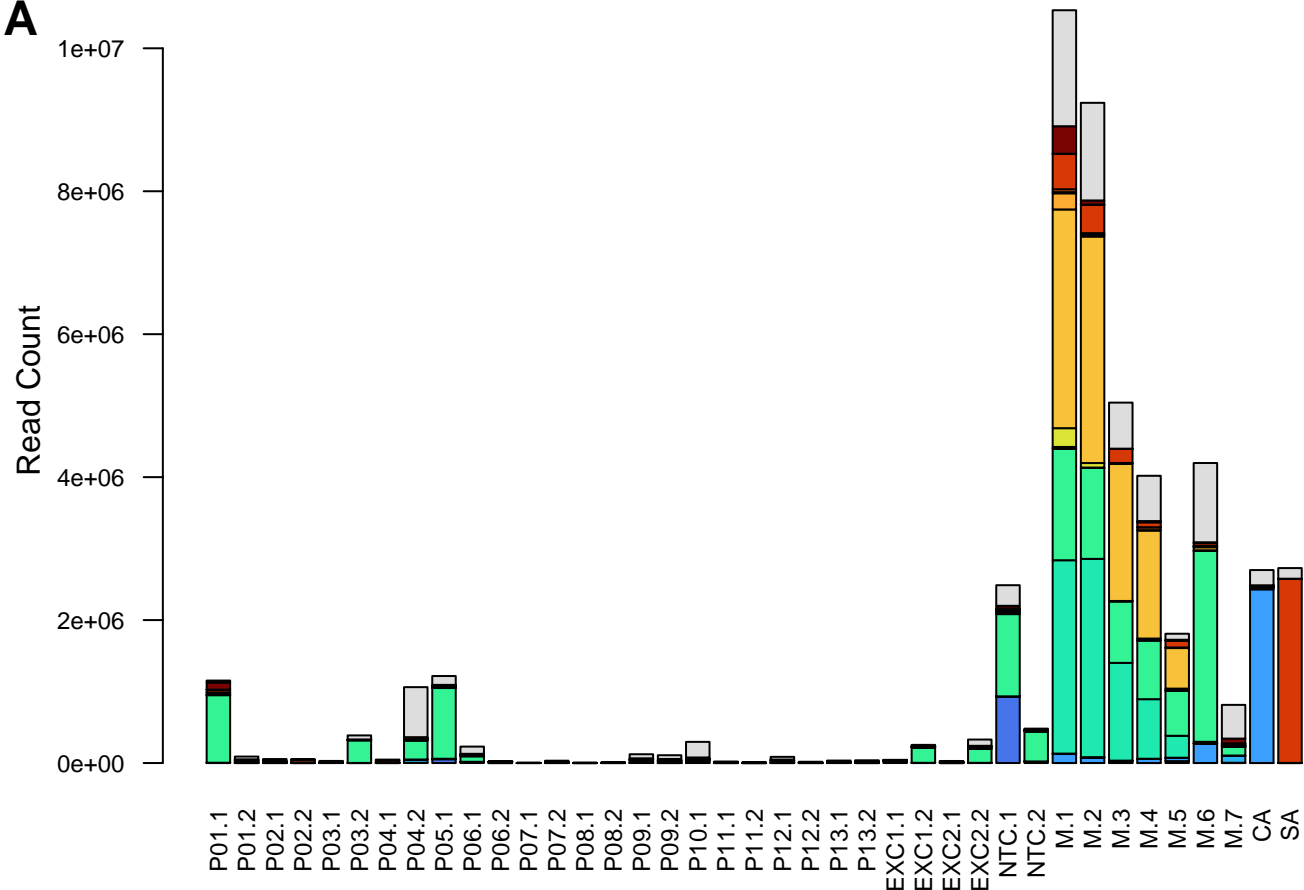
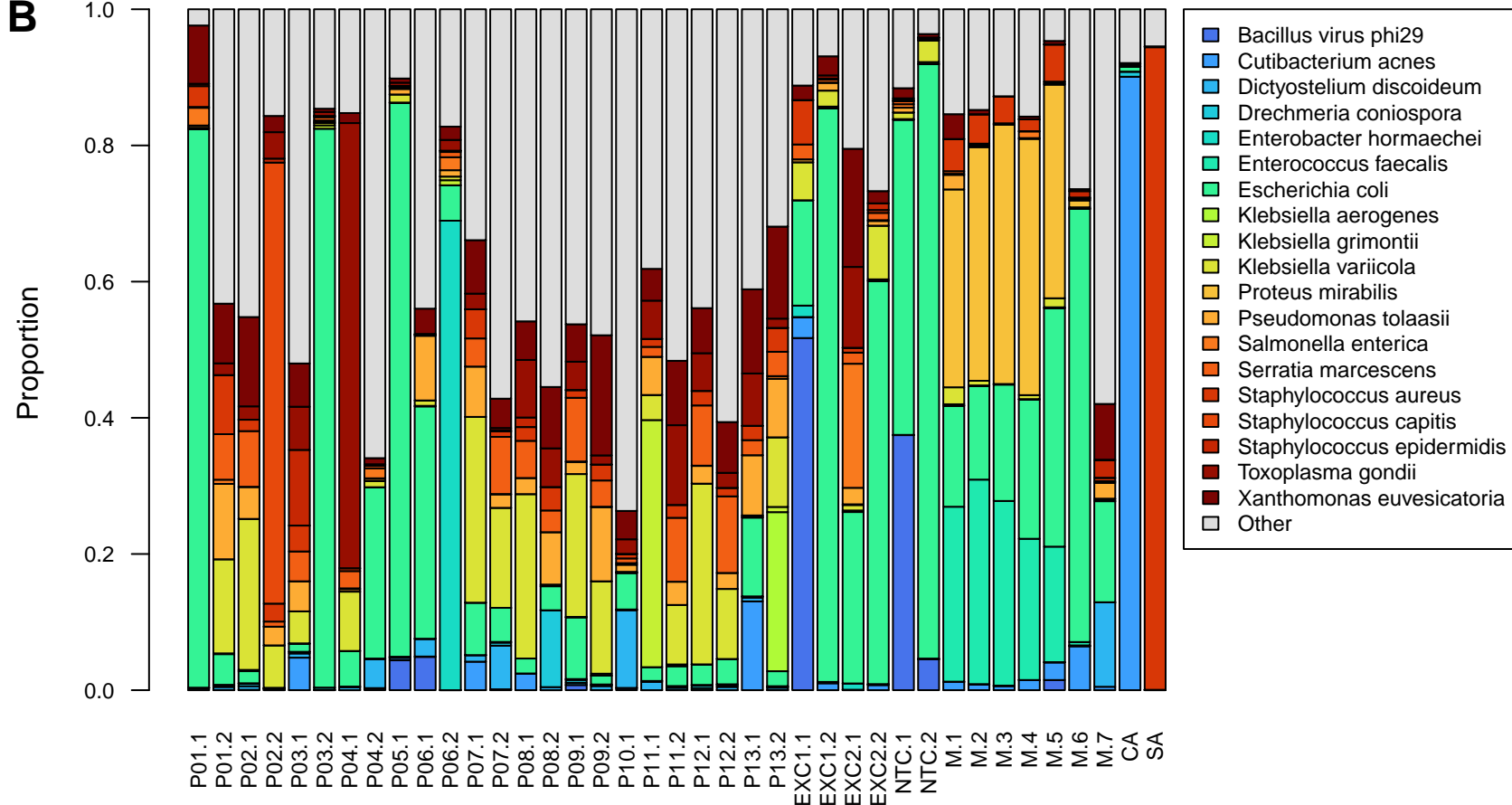


**A****B**

- Bacillus virus phi29
- Cutibacterium acnes
- Dictyostelium discoideum
- Drechmeria coniospora
- Enterobacter hormaechei
- Enterococcus faecalis
- Escherichia coli
- Klebsiella aerogenes
- Klebsiella grimontii
- Klebsiella variicola
- Proteus mirabilis
- Pseudomonas tolaasii
- Salmonella enterica
- Serratia marcescens
- Staphylococcus aureus
- Staphylococcus capitis
- Staphylococcus epidermidis
- Toxoplasma gondii
- Xanthomonas euvesicatoria
- Other