



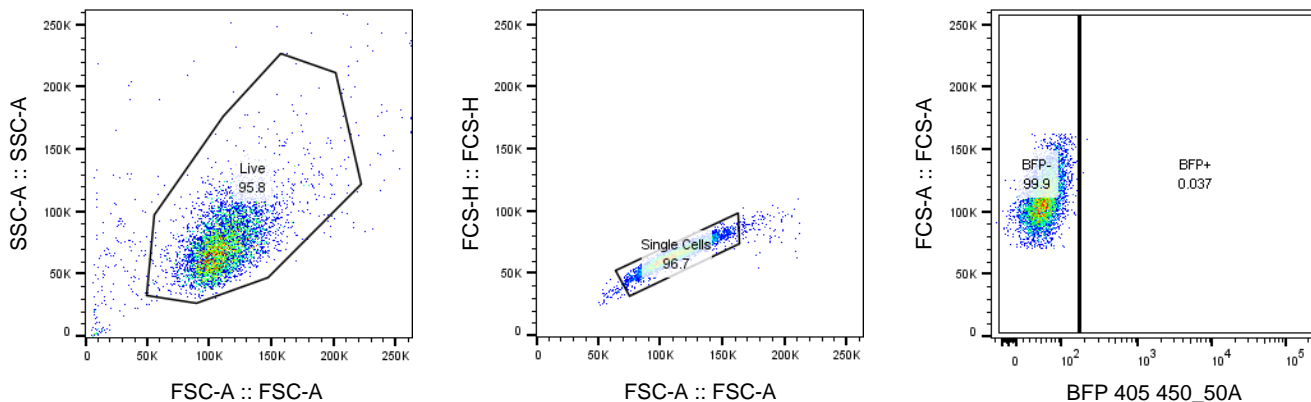
Nuclear proteasomes buffer cytoplasmic proteins during autophagy compromise

In the format provided by the authors and unedited

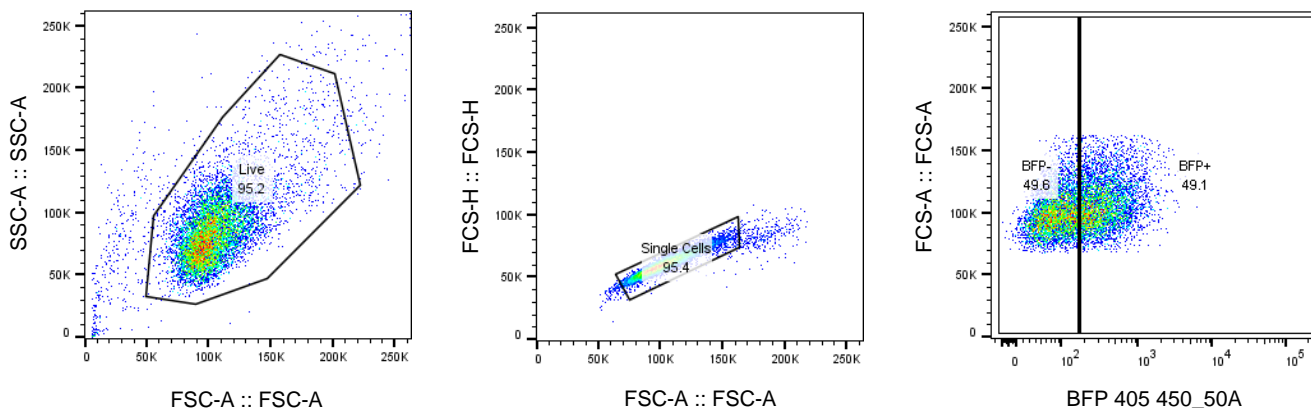
Supplementary information.

Sequential gating strategy for analysis of gRNA plasmid infected cells.

a. HeLa (no Cas9)



b. HeLa/Cas9 cell line with gRNA plasmid infection



Cells were first gated on forward (FSC-A) and side scatter (SSC-A) and then for singlets (FSC-A/FSC-H), before gating the BFP+ cells. Gates for BFP positive cells population (BFP+) were defined using wild-type HeLa cells (no Cas9 cell line).