

Source Data File

**The Polycomb system sustains promoters in a deep OFF-state
by limiting pre-initiation complex formation to counteract
transcription**

A. Szczurek, E. Dimitrova, J. Kelley, N. Blackledge & R. Klose

Raw blot images

Figure 2c

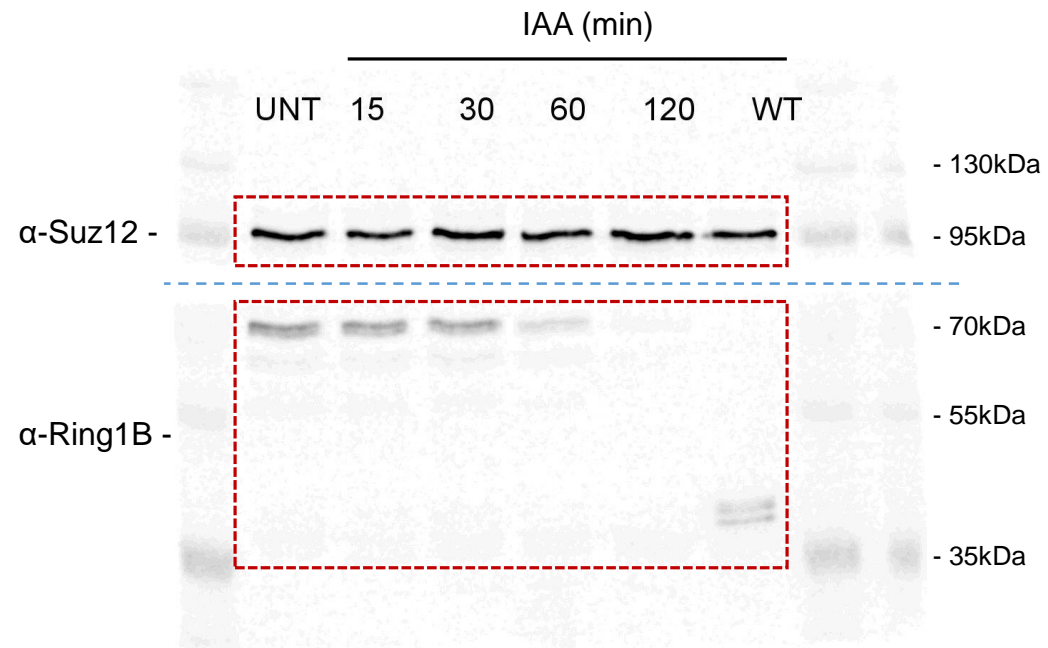


Figure 5b,d

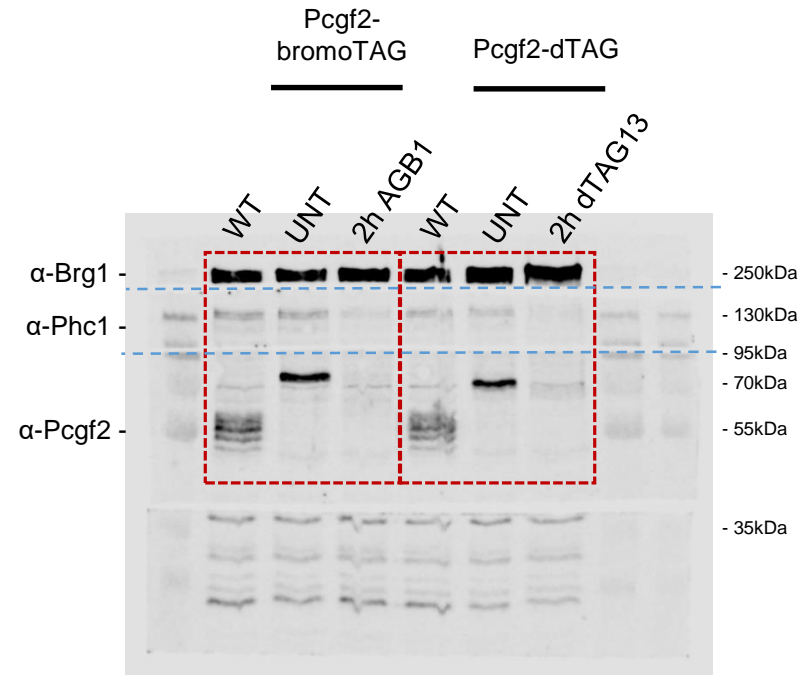
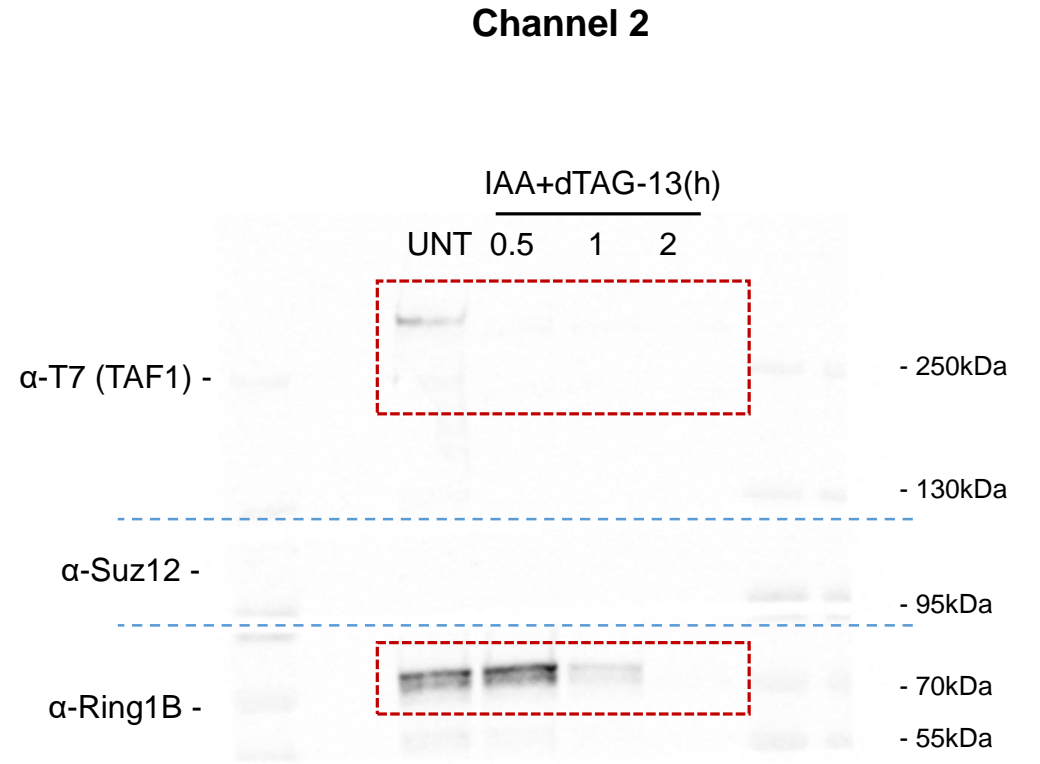
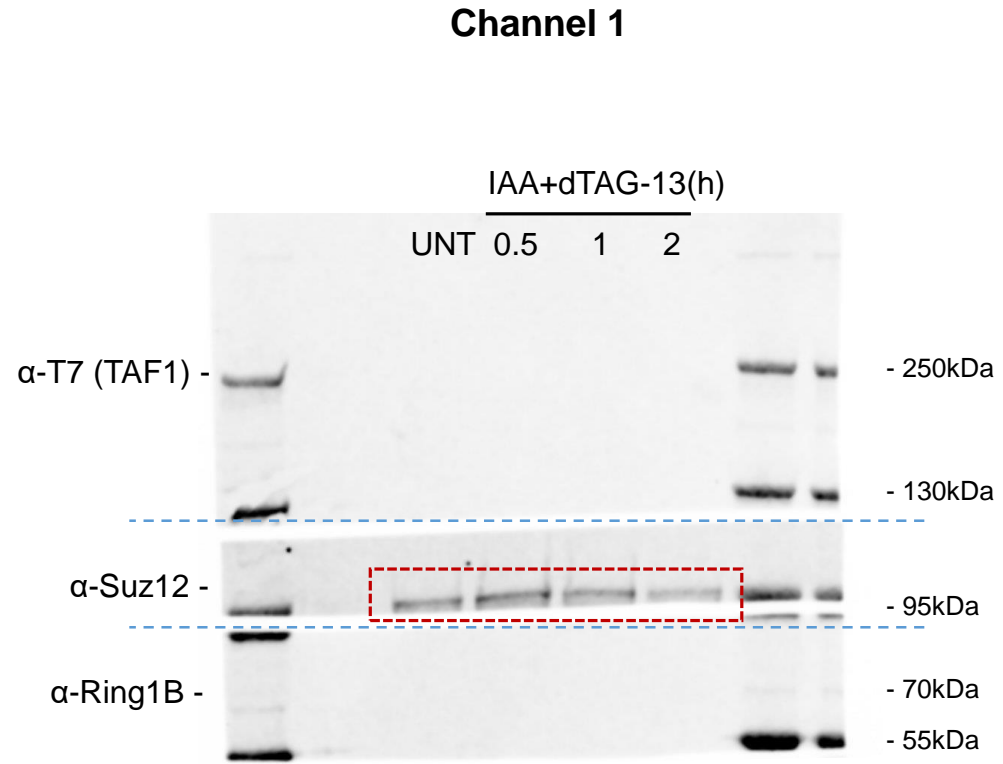
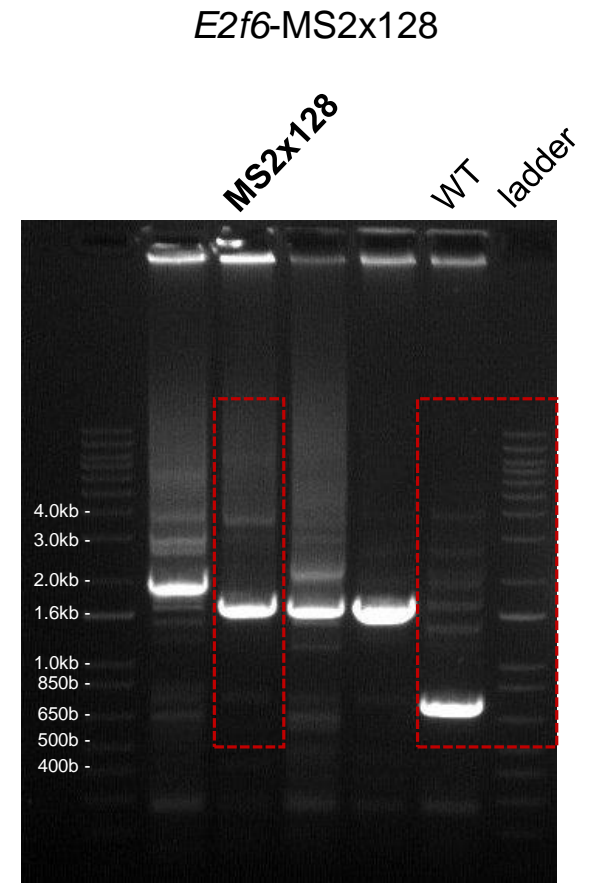
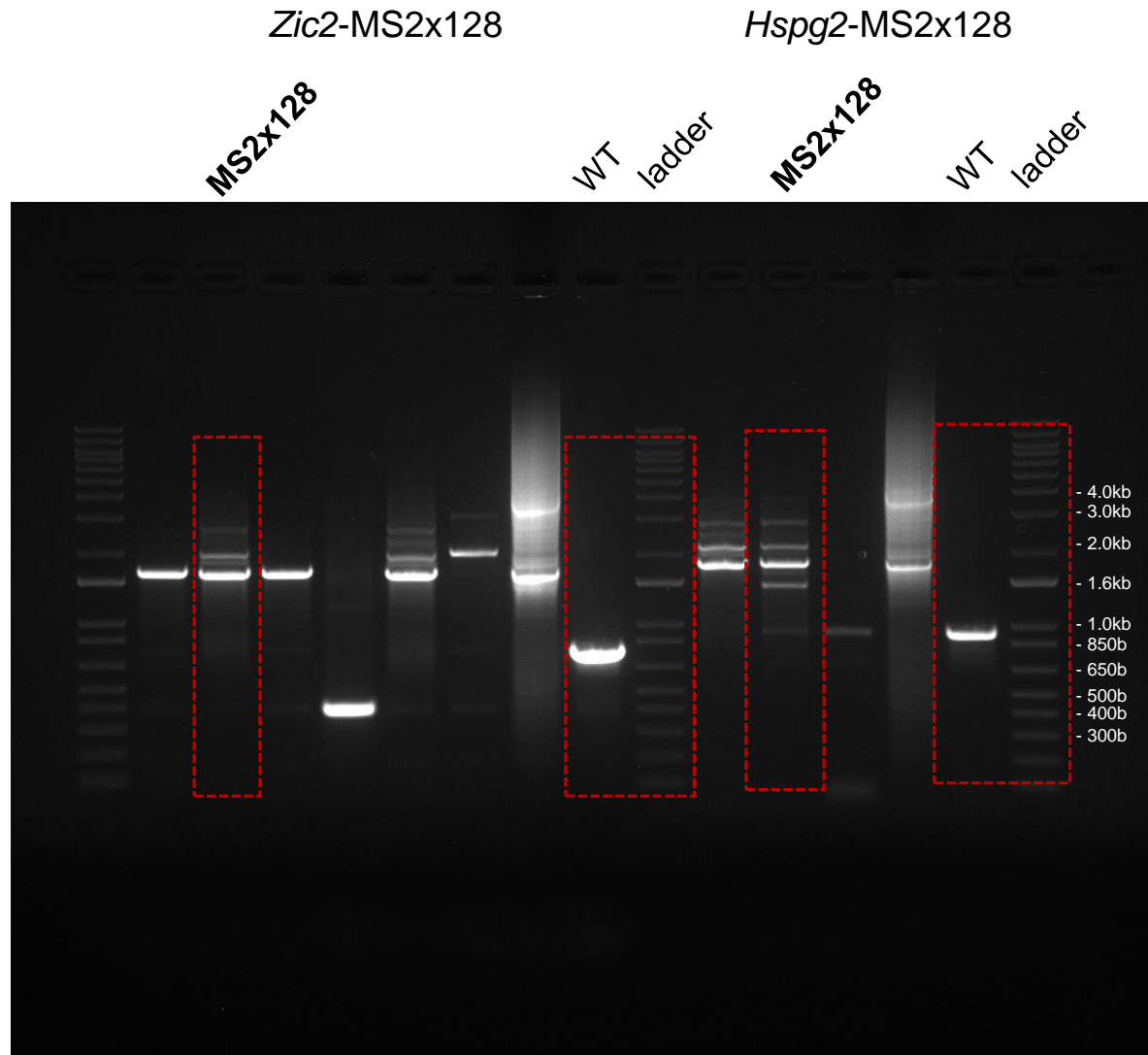


Figure 6d



Extended Data Figure 1a



Extended Data Figure 5a – part 1/2

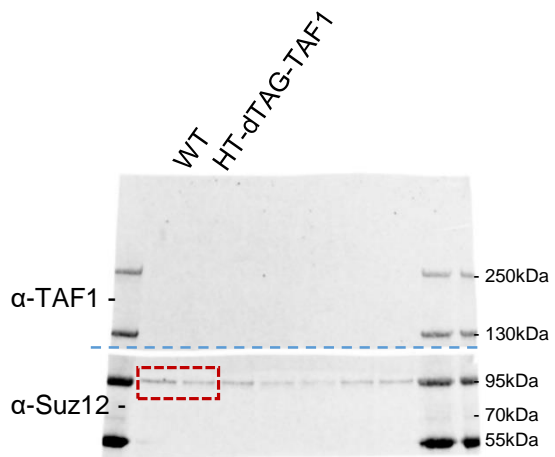
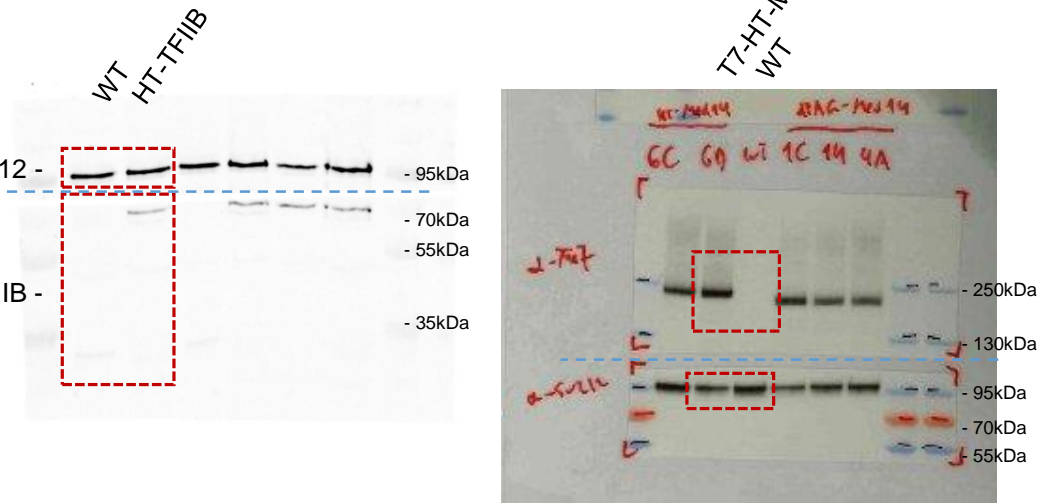
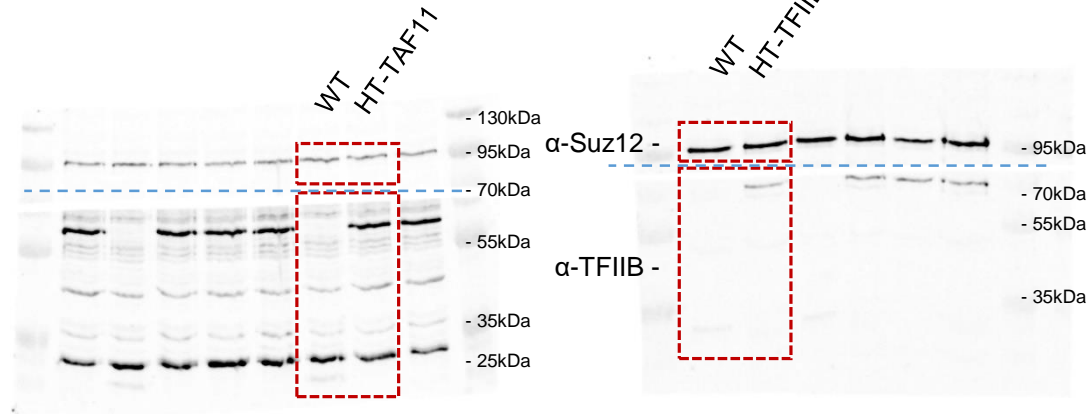
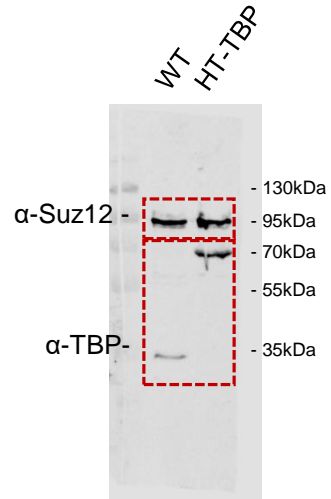
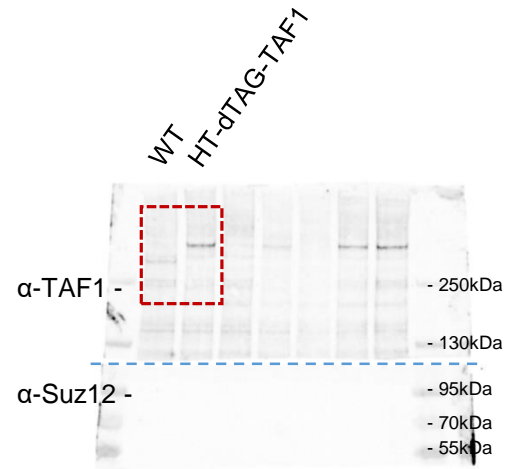
HT-dTAG-TAF1

HT-TBP

HT-TAF11

HT-TFIIB

T7-HT-Med14



n.a.

n.a.

n.a.

n.a.

Extended Data Figure 5a – part 2/2

