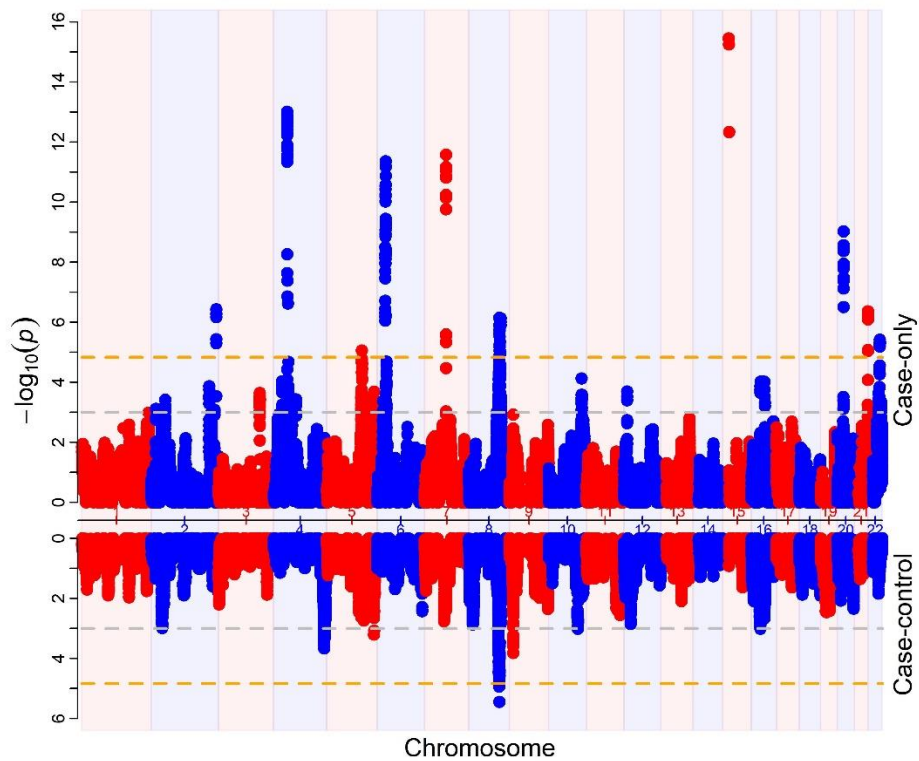


**HGGA, Volume 5**

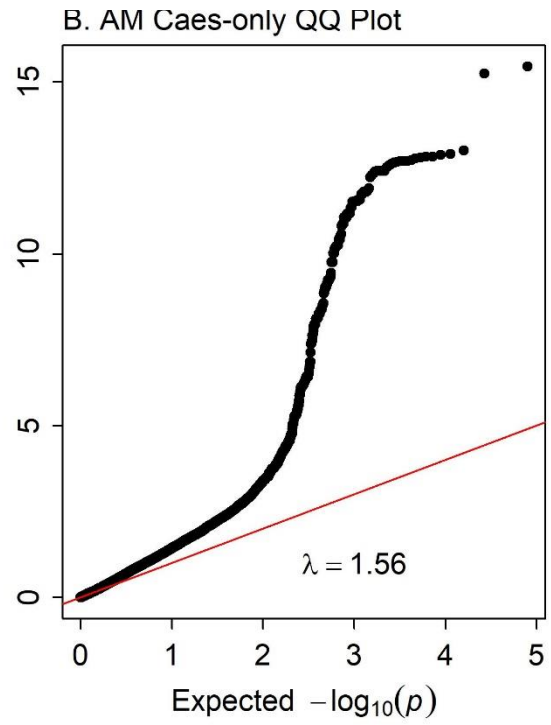
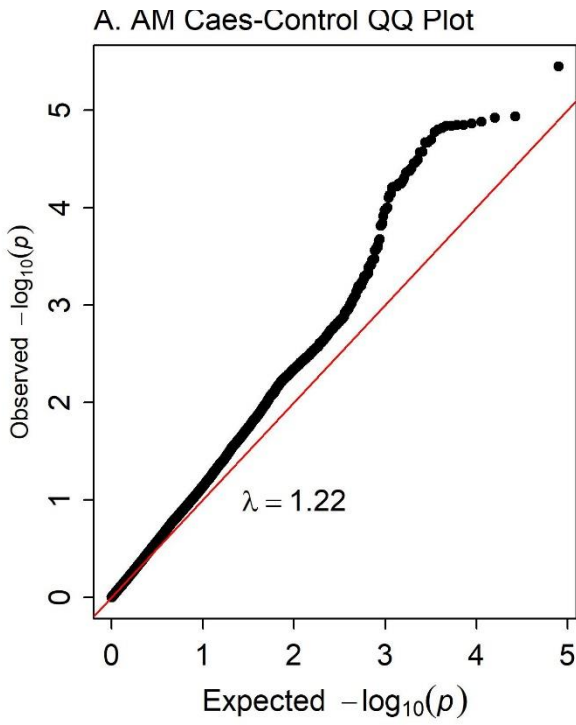
**Supplemental information**

**Joint genotype and ancestry analysis  
identify novel loci associated with atopic  
dermatitis in African American population**

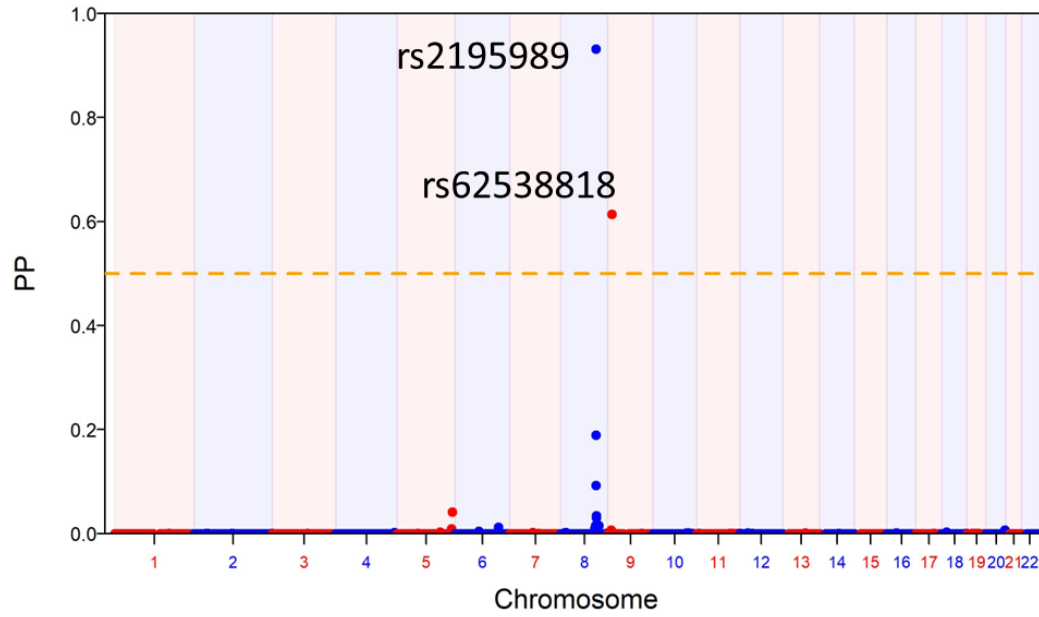
**Yadu Gautam, Latha Satish, Stephen Ramirez, Brittany Grashel, Jocelyn M. Biagini, Lisa J. Martin, Marc E. Rothenberg, Gurjit K. Khurana Hershey, and Tesfaye B. Mersha**



Supplemental Figure S1. Miami plot of inflation unadjusted AM results. The upper section shows results from case-only analysis and the lower section shows results from case-control analysis. Orange horizontal lines represent genome-wide significance cut-off at p-value  $< 1.47E-5$ .



Supplemental Figure S2. QQ plots of (A) case-control and (B) case-only AM results.  $\lambda$  = genomic inflation factor



Supplemental Figure S3. BMIX result. Figure shows the posterior probability (PP) from the BMIX joint analysis. Dashed horizontal line represents the significance threshold at PP = 0.5

**Supplemental Table T1.** AD-associated genes.

CHR	GENE	Study
4	SLAIN2	AM finemap
6	RNF39	AM finemap
20	FOXA2	AM finemap
3	PTPRG	GWAS
5	ADAMTS6	GWAS
6	SGK1	GWAS
6	OPRM1	GWAS
8	SYBU	GWAS
8	AARD	GWAS
8	EFR3A	GWAS
9	PTPRD	GWAS
14	MMP14	GWAS
15	CYFIP1	GWAS
8	ANGPT1	BMIX

**Supplemental Table T2:** Characteristics of the MPAACH Participants Used in this Study.

MPAACH Participant	AD Severity	Sex	Race
Healthy Control 1	Non – AD	Male	Non-Black
Healthy Control 2	Non-AD	Female	Black
Healthy Control 3	Non-AD	Male	Black
AD Patient 1	Moderate	Female	Black
AD Patient 2	Moderate	Female	Non-Black
AD Patient 3	Moderate	Female	Black
AD Patient 4	Moderate	Male	Black
AD Patient 5	Moderate	Male	Non-Black
AD Patient 6	Moderate	Male	Non-Black

**Supplemental Table T3:** List of Taqman probes used for the study.

Taqman probes	Assay ID
ANGPT1	Hs00919202_m1
LURAP1L	Hs00402875_m1
SGK1	Hs00178612_m1
EFR3A	Hs00921352_m1
18s (Housekeeping Gene)	Hs03003631_g1