



# Full wwPDB EM Validation Report ⓘ

Jul 24, 2023 – 05:59 PM JST

PDB ID : 8K19  
EMDB ID : EMD-36789  
Title : Neutralization antibody ZCP3B4 bound with SARS-CoV-2 Omicron BA.5 RBD  
Deposited on : 2023-07-10  
Resolution : 3.88 Å (reported)

**This wwPDB validation report is for manuscript review**

This is a Full wwPDB EM Validation Report.

This report is produced by the wwPDB biocuration pipeline after annotation of the structure.

We welcome your comments at [validation@mail.wwpdb.org](mailto:validation@mail.wwpdb.org)

A user guide is available at

<https://www.wwpdb.org/validation/2017/EMValidationReportHelp>

with specific help available everywhere you see the ⓘ symbol.

The types of validation reports are described at

<http://www.wwpdb.org/validation/2017/FAQs#types>.

---

The following versions of software and data (see [references ⓘ](#)) were used in the production of this report:

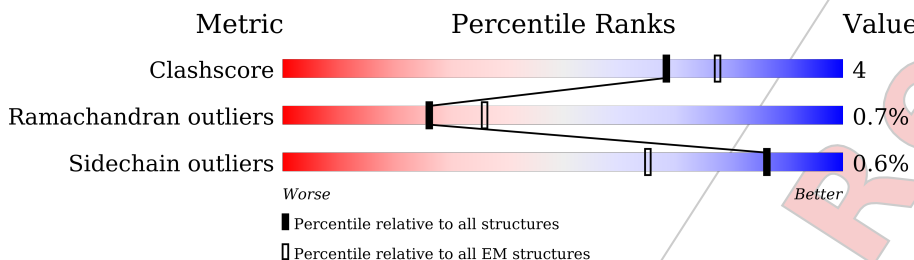
EMDB validation analysis	:	0.0.1.dev50
MolProbity	:	4.02b-467
Percentile statistics	:	20191225.v01 (using entries in the PDB archive December 25th 2019)
MapQ	:	1.9.9
Ideal geometry (proteins)	:	Engh & Huber (2001)
Ideal geometry (DNA, RNA)	:	Parkinson et al. (1996)
Validation Pipeline (wwPDB-VP)	:	2.34

# 1 Overall quality at a glance i

The following experimental techniques were used to determine the structure:  
*ELECTRON MICROSCOPY*

The reported resolution of this entry is 3.88 Å.

Percentile scores (ranging between 0-100) for global validation metrics of the entry are shown in the following graphic. The table shows the number of entries on which the scores are based.



Metric	Whole archive (#Entries)	EM structures (#Entries)
Clashscore	158937	4297
Ramachandran outliers	154571	4023
Sidechain outliers	154315	3826

The table below summarises the geometric issues observed across the polymeric chains and their fit to the map. The red, orange, yellow and green segments of the bar indicate the fraction of residues that contain outliers for  $\geq 3$ , 2, 1 and 0 types of geometric quality criteria respectively. A grey segment represents the fraction of residues that are not modelled. The numeric value for each fraction is indicated below the corresponding segment, with a dot representing fractions  $\leq 5\%$ . The upper red bar (where present) indicates the fraction of residues that have poor fit to the EM map (all-atom inclusion  $< 40\%$ ). The numeric value is given above the bar.

Mol	Chain	Length	Quality of chain
1	A	119	 9% 88% 9% .
2	B	107	 7% 90% 9% .
3	E	193	 83% 13% . .

## 2 Entry composition [i](#)

There are 3 unique types of molecules in this entry. The entry contains 3224 atoms, of which 0 are hydrogens and 0 are deuteriums.

In the tables below, the AltConf column contains the number of residues with at least one atom in alternate conformation and the Trace column contains the number of residues modelled with at most 2 atoms.

- Molecule 1 is a protein called ZCP3B4 heavy chain.

Mol	Chain	Residues	Atoms					AltConf	Trace
			Total	C	N	O	S		
1	A	119	906	562	159	178	7	0	0

- Molecule 2 is a protein called ZCP3B4 light chain.

Mol	Chain	Residues	Atoms					AltConf	Trace
			Total	C	N	O	S		
2	B	107	818	514	139	162	3	0	0

- Molecule 3 is a protein called Spike protein S1.

Mol	Chain	Residues	Atoms					AltConf	Trace
			Total	C	N	O	S		
3	E	188	1500	965	248	278	9	0	0

There are 36 discrepancies between the modelled and reference sequences:

Chain	Residue	Modelled	Actual	Comment	Reference
E	339	ASP	GLY	variant	UNP P0DTC2
E	346	LYS	ARG	variant	UNP P0DTC2
E	348	PRO	ALA	conflict	UNP P0DTC2
E	354	GLU	ASN	conflict	UNP P0DTC2
E	357	LYS	ARG	conflict	UNP P0DTC2
E	371	PHE	SER	variant	UNP P0DTC2
E	372	THR	ALA	conflict	UNP P0DTC2
E	373	PRO	SER	variant	UNP P0DTC2
E	376	ALA	THR	variant	UNP P0DTC2
E	384	ALA	PRO	conflict	UNP P0DTC2
E	393	SER	THR	conflict	UNP P0DTC2
E	402	VAL	ILE	conflict	UNP P0DTC2
E	403	LYS	ARG	conflict	UNP P0DTC2
E	405	ASN	ASP	variant	UNP P0DTC2
E	406	ASP	GLU	conflict	UNP P0DTC2

*Continued on next page...*

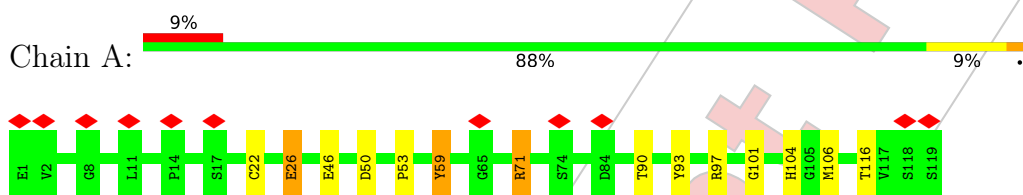
*Continued from previous page...*

Chain	Residue	Modelled	Actual	Comment	Reference
E	408	SER	ARG	variant	UNP P0DTC2
E	417	ASN	LYS	variant	UNP P0DTC2
E	430	MET	THR	conflict	UNP P0DTC2
E	434	LEU	ILE	conflict	UNP P0DTC2
E	438	THR	SER	conflict	UNP P0DTC2
E	439	ARG	ASN	conflict	UNP P0DTC2
E	440	LYS	ASN	variant	UNP P0DTC2
E	441	ILE	LEU	conflict	UNP P0DTC2
E	443	ALA	SER	conflict	UNP P0DTC2
E	444	THR	LYS	variant	UNP P0DTC2
E	445	SER	VAL	conflict	UNP P0DTC2
E	446	THR	GLY	conflict	UNP P0DTC2
E	452	ARG	LEU	variant	UNP P0DTC2
E	477	ASN	SER	variant	UNP P0DTC2
E	478	LYS	THR	variant	UNP P0DTC2
E	484	ALA	GLU	variant	UNP P0DTC2
E	486	VAL	PHE	variant	UNP P0DTC2
E	496	SER	GLY	variant	UNP P0DTC2
E	498	ARG	GLN	variant	UNP P0DTC2
E	501	TYR	ASN	variant	UNP P0DTC2
E	505	HIS	TYR	variant	UNP P0DTC2

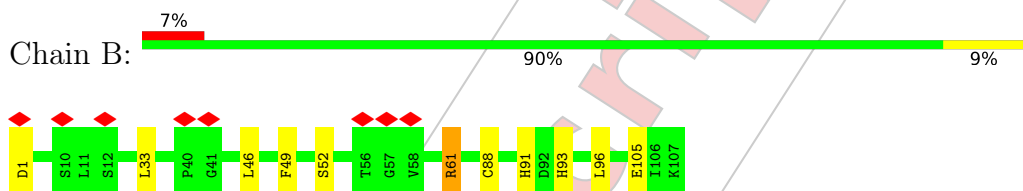
### 3 Residue-property plots [i](#)

These plots are drawn for all protein, RNA, DNA and oligosaccharide chains in the entry. The first graphic for a chain summarises the proportions of the various outlier classes displayed in the second graphic. The second graphic shows the sequence view annotated by issues in geometry and atom inclusion in map density. Residues are color-coded according to the number of geometric quality criteria for which they contain at least one outlier: green = 0, yellow = 1, orange = 2 and red = 3 or more. A red diamond above a residue indicates a poor fit to the EM map for this residue (all-atom inclusion < 40%). Stretches of 2 or more consecutive residues without any outlier are shown as a green connector. Residues present in the sample, but not in the model, are shown in grey.

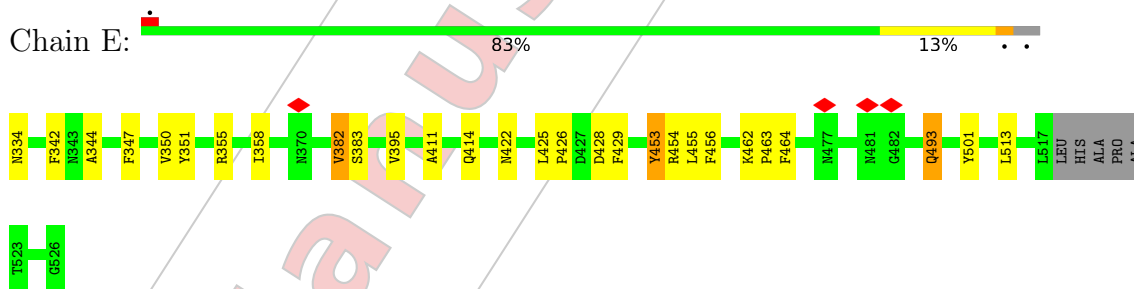
- Molecule 1: ZCP3B4 heavy chain



- Molecule 2: ZCP3B4 light chain



- Molecule 3: Spike protein S1



## 4 Experimental information i

Property	Value	Source
EM reconstruction method	SINGLE PARTICLE	Depositor
Imposed symmetry	POINT, Not provided	
Number of particles used	215557	Depositor
Resolution determination method	FSC 0.143 CUT-OFF	Depositor
CTF correction method	PHASE FLIPPING AND AMPLITUDE CORRECTION	Depositor
Microscope	FEI TITAN KRIOS	Depositor
Voltage (kV)	300	Depositor
Electron dose ( $e^-/\text{\AA}^2$ )	50.0	Depositor
Minimum defocus (nm)	1000	Depositor
Maximum defocus (nm)	2500	Depositor
Magnification	Not provided	
Image detector	GATAN K3 BIOQUANTUM (6k x 4k)	Depositor
Maximum map value	0.503	Depositor
Minimum map value	-0.121	Depositor
Average map value	0.002	Depositor
Map value standard deviation	0.021	Depositor
Recommended contour level	0.09	Depositor
Map size (Å)	339.19998, 339.19998, 339.19998	wwPDB
Map dimensions	320, 320, 320	wwPDB
Map angles (°)	90.0, 90.0, 90.0	wwPDB
Pixel spacing (Å)	1.06, 1.06, 1.06	Depositor

## 5 Model quality i

### 5.1 Standard geometry i

The Z score for a bond length (or angle) is the number of standard deviations the observed value is removed from the expected value. A bond length (or angle) with  $|Z| > 5$  is considered an outlier worth inspection. RMSZ is the root-mean-square of all Z scores of the bond lengths (or angles).

Mol	Chain	Bond lengths		Bond angles	
		RMSZ	# Z  >5	RMSZ	# Z  >5
1	A	0.70	0/924	1.10	5/1249 (0.4%)
2	B	0.66	1/837 (0.1%)	0.96	2/1136 (0.2%)
3	E	0.76	0/1542	1.00	2/2095 (0.1%)
All	All	0.72	1/3303 (0.0%)	1.02	9/4480 (0.2%)

Chiral center outliers are detected by calculating the chiral volume of a chiral center and verifying if the center is modelled as a planar moiety or with the opposite hand. A planarity outlier is detected by checking planarity of atoms in a peptide group, atoms in a mainchain group or atoms of a sidechain that are expected to be planar.

Mol	Chain	#Chirality outliers	#Planarity outliers
1	A	0	5
2	B	0	3
3	E	0	3
All	All	0	11

All (1) bond length outliers are listed below:

Mol	Chain	Res	Type	Atoms	Z	Observed(Å)	Ideal(Å)
2	B	1	ASP	CB-CG	5.63	1.63	1.51

All (9) bond angle outliers are listed below:

Mol	Chain	Res	Type	Atoms	Z	Observed(°)	Ideal(°)
1	A	50	ASP	CB-CG-OD2	-8.38	110.76	118.30
2	B	61	ARG	NE-CZ-NH1	7.30	123.95	120.30
1	A	97	ARG	NE-CZ-NH1	7.25	123.92	120.30
3	E	501	TYR	CB-CG-CD2	-6.46	117.12	121.00
1	A	97	ARG	NE-CZ-NH2	-6.10	117.25	120.30
3	E	355	ARG	NE-CZ-NH1	5.90	123.25	120.30
1	A	71	ARG	NE-CZ-NH1	5.57	123.08	120.30
1	A	59	TYR	CB-CG-CD1	-5.33	117.80	121.00
2	B	1	ASP	CB-CG-OD1	-5.09	113.72	118.30

There are no chirality outliers.

All (11) planarity outliers are listed below:

Mol	Chain	Res	Type	Group
1	A	22	CYS	Mainchain
1	A	26	GLU	Mainchain
1	A	46	GLU	Sidechain
1	A	59	TYR	Sidechain
1	A	93	TYR	Sidechain
2	B	105	GLU	Sidechain
2	B	61	ARG	Sidechain
2	B	93	HIS	Sidechain
3	E	334	ASN	Sidechain
3	E	453	TYR	Mainchain
3	E	493	GLN	Mainchain

## 5.2 Too-close contacts [i](#)

In the following table, the Non-H and H(model) columns list the number of non-hydrogen atoms and hydrogen atoms in the chain respectively. The H(added) column lists the number of hydrogen atoms added and optimized by MolProbity. The Clashes column lists the number of clashes within the asymmetric unit, whereas Symm-Clashes lists symmetry-related clashes.

Mol	Chain	Non-H	H(model)	H(added)	Clashes	Symm-Clashes
1	A	906	0	877	7	0
2	B	818	0	798	4	0
3	E	1500	0	1426	18	0
All	All	3224	0	3101	24	0

The all-atom clashscore is defined as the number of clashes found per 1000 atoms (including hydrogen atoms). The all-atom clashscore for this structure is 4.

All (24) close contacts within the same asymmetric unit are listed below, sorted by their clash magnitude.

Atom-1	Atom-2	Interatomic distance (Å)	Clash overlap (Å)
1:A:101:GLY:HA3	3:E:493:GLN:HE22	1.25	1.01
3:E:456:PHE:CZ	3:E:493:GLN:NE2	2.51	0.79
1:A:101:GLY:HA3	3:E:493:GLN:NE2	2.03	0.70
3:E:456:PHE:HZ	3:E:493:GLN:NE2	1.96	0.63
3:E:426:PRO:HB3	3:E:463:PRO:HB3	1.83	0.60
1:A:104:HIS:HA	2:B:49:PHE:CD2	2.38	0.59
2:B:91:HIS:HA	2:B:96:LEU:HD22	1.91	0.53

*Continued on next page...*



Continued from previous page...

Atom-1	Atom-2	Interatomic distance (Å)	Clash overlap (Å)
3:E:411:ALA:HB3	3:E:414:GLN:HG2	1.90	0.52
1:A:106:MET:HB3	2:B:46:LEU:HD21	1.92	0.52
3:E:351:TYR:HB3	3:E:454:ARG:H	1.76	0.51
3:E:350:VAL:HG22	3:E:422:ASN:HB3	1.94	0.50
3:E:456:PHE:HZ	3:E:493:GLN:HE21	1.61	0.48
1:A:101:GLY:HA2	3:E:455:LEU:HD21	1.96	0.47
3:E:342:PHE:HZ	3:E:513:LEU:HD21	1.80	0.47
3:E:453:TYR:CE2	3:E:455:LEU:HD22	2.50	0.46
1:A:90:THR:HG23	1:A:116:THR:HA	1.96	0.46
3:E:456:PHE:CE1	3:E:493:GLN:NE2	2.86	0.44
3:E:344:ALA:HB3	3:E:347:PHE:CE1	2.53	0.43
3:E:382:VAL:HG22	3:E:383:SER:H	1.84	0.42
3:E:425:LEU:HD23	3:E:464:PHE:CE1	2.56	0.41
2:B:33:LEU:HD21	2:B:88:CYS:HB2	2.03	0.41
1:A:53:PRO:HA	1:A:71:ARG:HH12	1.85	0.41
3:E:425:LEU:HD22	3:E:429:PHE:CD1	2.56	0.40
3:E:358:ILE:HB	3:E:395:VAL:HB	2.03	0.40

There are no symmetry-related clashes.

### 5.3 Torsion angles [i](#)

#### 5.3.1 Protein backbone [i](#)

In the following table, the Percentiles column shows the percent Ramachandran outliers of the chain as a percentile score with respect to all PDB entries followed by that with respect to all EM entries.

The Analysed column shows the number of residues for which the backbone conformation was analysed, and the total number of residues.

Mol	Chain	Analysed	Favoured	Allowed	Outliers	Percentiles	
1	A	117/119 (98%)	112 (96%)	4 (3%)	1 (1%)	17	54
2	B	105/107 (98%)	99 (94%)	5 (5%)	1 (1%)	15	52
3	E	184/193 (95%)	173 (94%)	10 (5%)	1 (0%)	29	67
All	All	406/419 (97%)	384 (95%)	19 (5%)	3 (1%)	26	60

All (3) Ramachandran outliers are listed below:

Mol	Chain	Res	Type
2	B	52	SER
1	A	26	GLU
3	E	428	ASP

### 5.3.2 Protein sidechains [i](#)

In the following table, the Percentiles column shows the percent sidechain outliers of the chain as a percentile score with respect to all PDB entries followed by that with respect to all EM entries.

The Analysed column shows the number of residues for which the sidechain conformation was analysed, and the total number of residues.

Mol	Chain	Analysed	Rotameric	Outliers	Percentiles	
1	A	97/97 (100%)	97 (100%)	0	100	100
2	B	92/92 (100%)	92 (100%)	0	100	100
3	E	164/167 (98%)	162 (99%)	2 (1%)	71	83
All	All	353/356 (99%)	351 (99%)	2 (1%)	86	91

All (2) residues with a non-rotameric sidechain are listed below:

Mol	Chain	Res	Type
3	E	382	VAL
3	E	462	LYS

Sometimes sidechains can be flipped to improve hydrogen bonding and reduce clashes. All (2) such sidechains are listed below:

Mol	Chain	Res	Type
3	E	360	ASN
3	E	417	ASN

### 5.3.3 RNA [i](#)

There are no RNA molecules in this entry.

## 5.4 Non-standard residues in protein, DNA, RNA chains [i](#)

There are no non-standard protein/DNA/RNA residues in this entry.

## 5.5 Carbohydrates [i](#)

There are no monosaccharides in this entry.

## 5.6 Ligand geometry [i](#)

There are no ligands in this entry.

## 5.7 Other polymers [i](#)

There are no such residues in this entry.

## 5.8 Polymer linkage issues [i](#)

There are no chain breaks in this entry.

For Manuscript Review

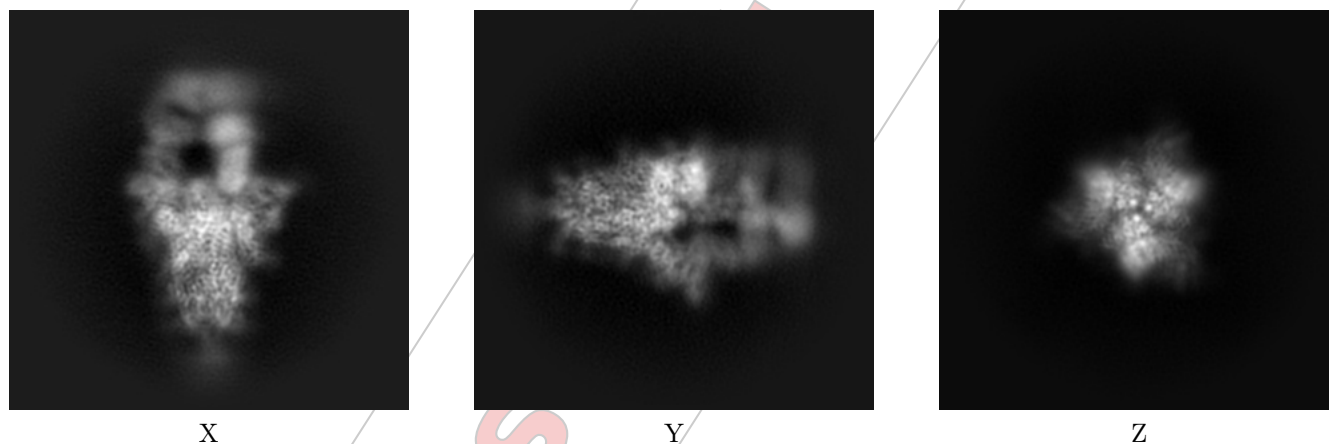
## 6 Map visualisation [i](#)

This section contains visualisations of the EMDB entry EMD-36789. These allow visual inspection of the internal detail of the map and identification of artifacts.

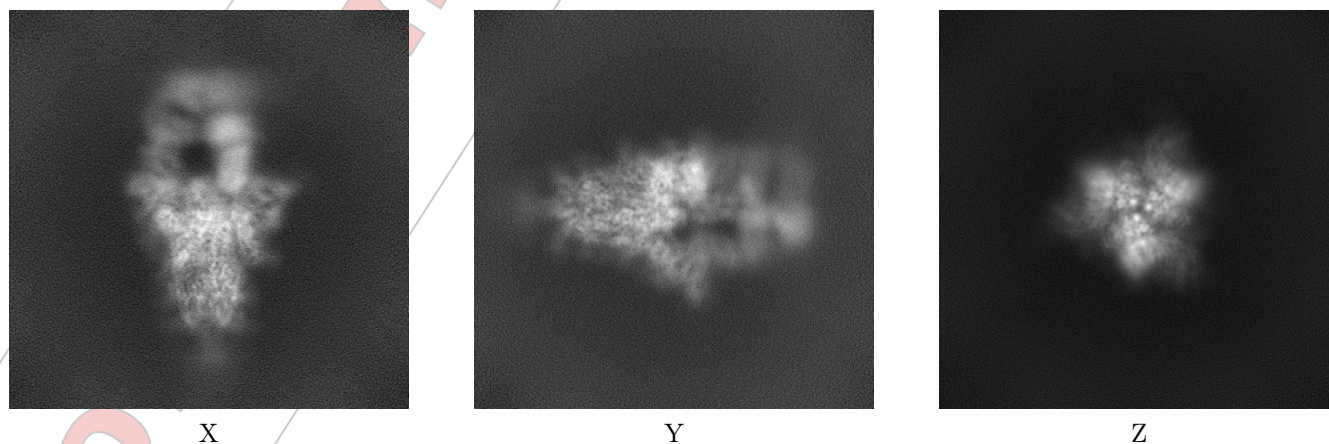
Images derived from a raw map, generated by summing the deposited half-maps, are presented below the corresponding image components of the primary map to allow further visual inspection and comparison with those of the primary map.

### 6.1 Orthogonal projections [i](#)

#### 6.1.1 Primary map



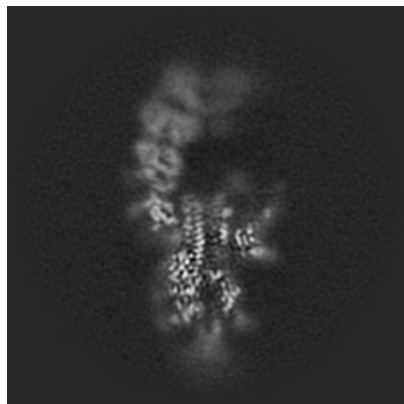
#### 6.1.2 Raw map



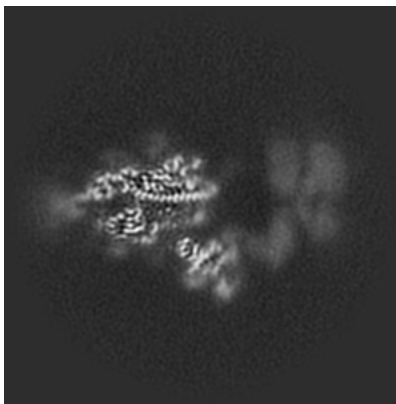
The images above show the map projected in three orthogonal directions.

## 6.2 Central slices [i](#)

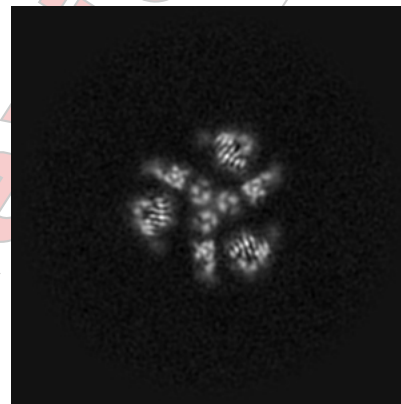
### 6.2.1 Primary map



X Index: 160



Y Index: 160

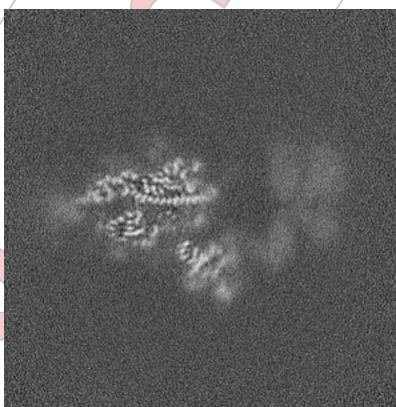


Z Index: 160

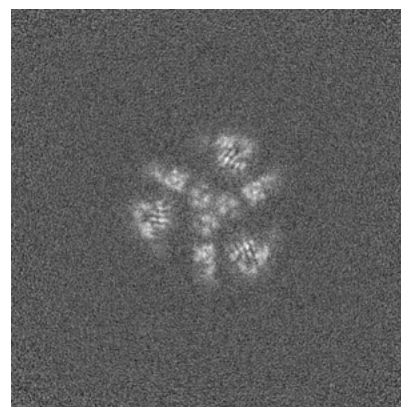
### 6.2.2 Raw map



X Index: 160



Y Index: 160

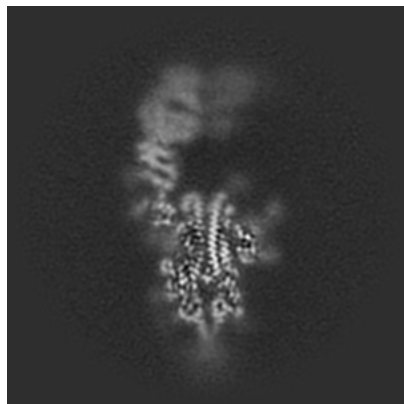


Z Index: 160

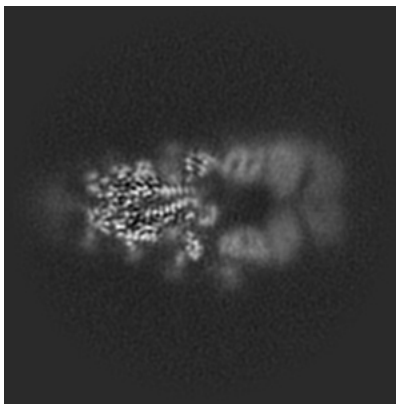
The images above show central slices of the map in three orthogonal directions.

## 6.3 Largest variance slices [i](#)

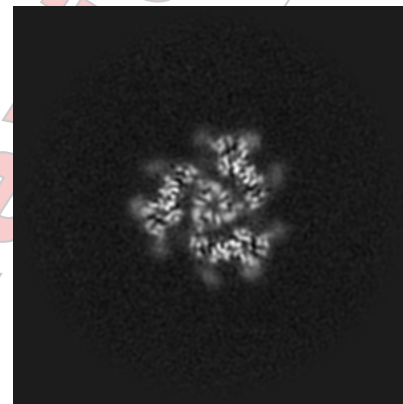
### 6.3.1 Primary map



X Index: 155

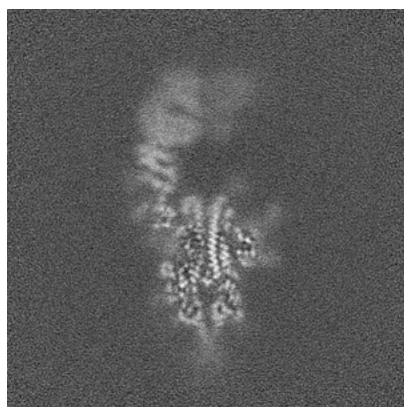


Y Index: 172

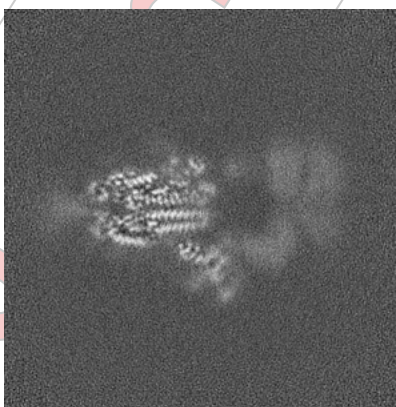


Z Index: 153

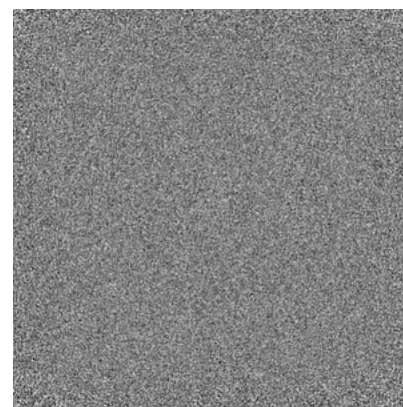
### 6.3.2 Raw map



X Index: 155



Y Index: 164

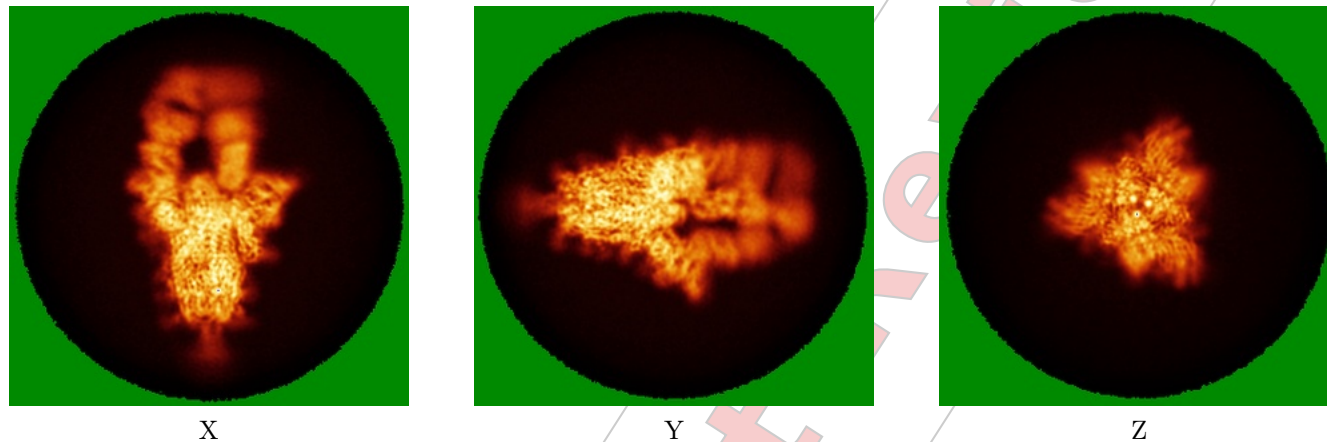


Z Index: 319

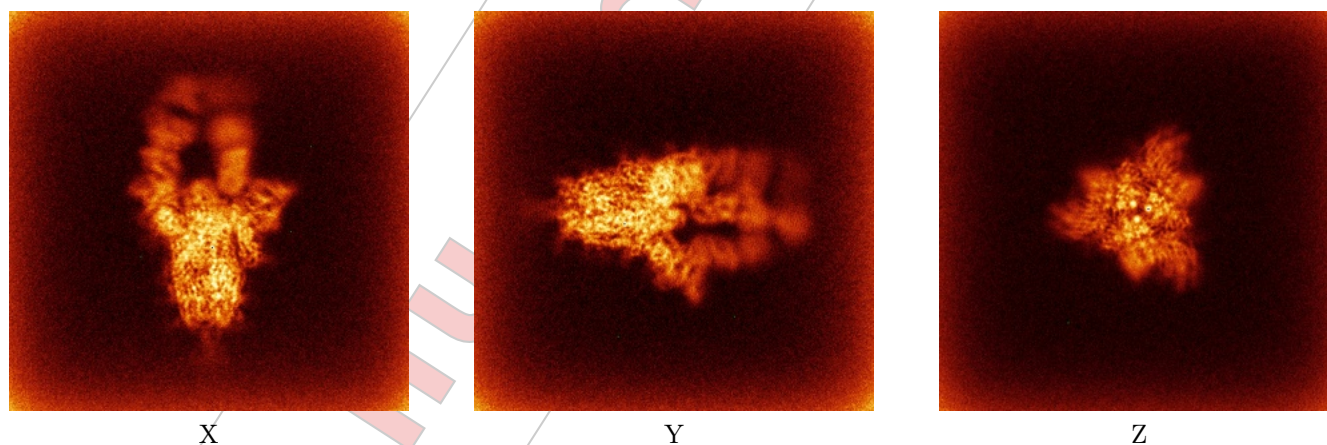
The images above show the largest variance slices of the map in three orthogonal directions.

## 6.4 Orthogonal standard-deviation projections (False-color) [i](#)

### 6.4.1 Primary map



### 6.4.2 Raw map



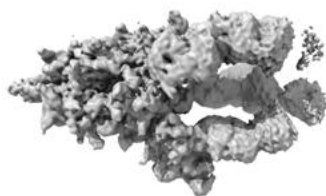
The images above show the map standard deviation projections with false color in three orthogonal directions. Minimum values are shown in green, max in blue, and dark to light orange shades represent small to large values respectively.

## 6.5 Orthogonal surface views [\(i\)](#)

### 6.5.1 Primary map



X



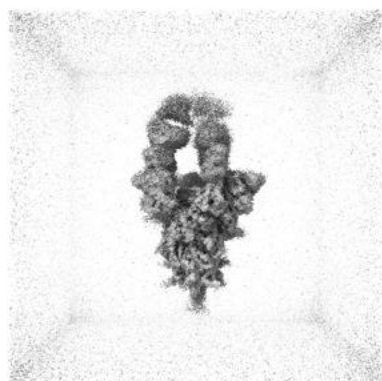
Y



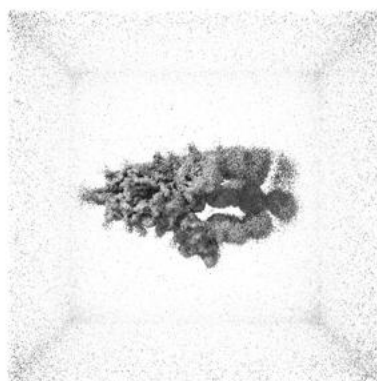
Z

The images above show the 3D surface view of the map at the recommended contour level 0.09. These images, in conjunction with the slice images, may facilitate assessment of whether an appropriate contour level has been provided.

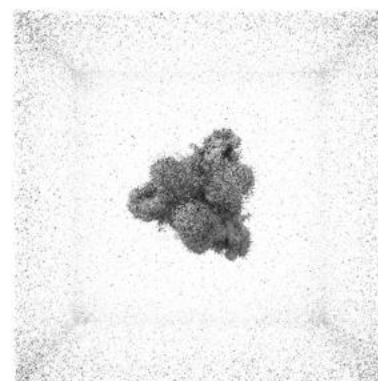
### 6.5.2 Raw map



X



Y



Z

These images show the 3D surface of the raw map. The raw map's contour level was selected so that its surface encloses the same volume as the primary map does at its recommended contour level.

## 6.6 Mask visualisation [\(i\)](#)

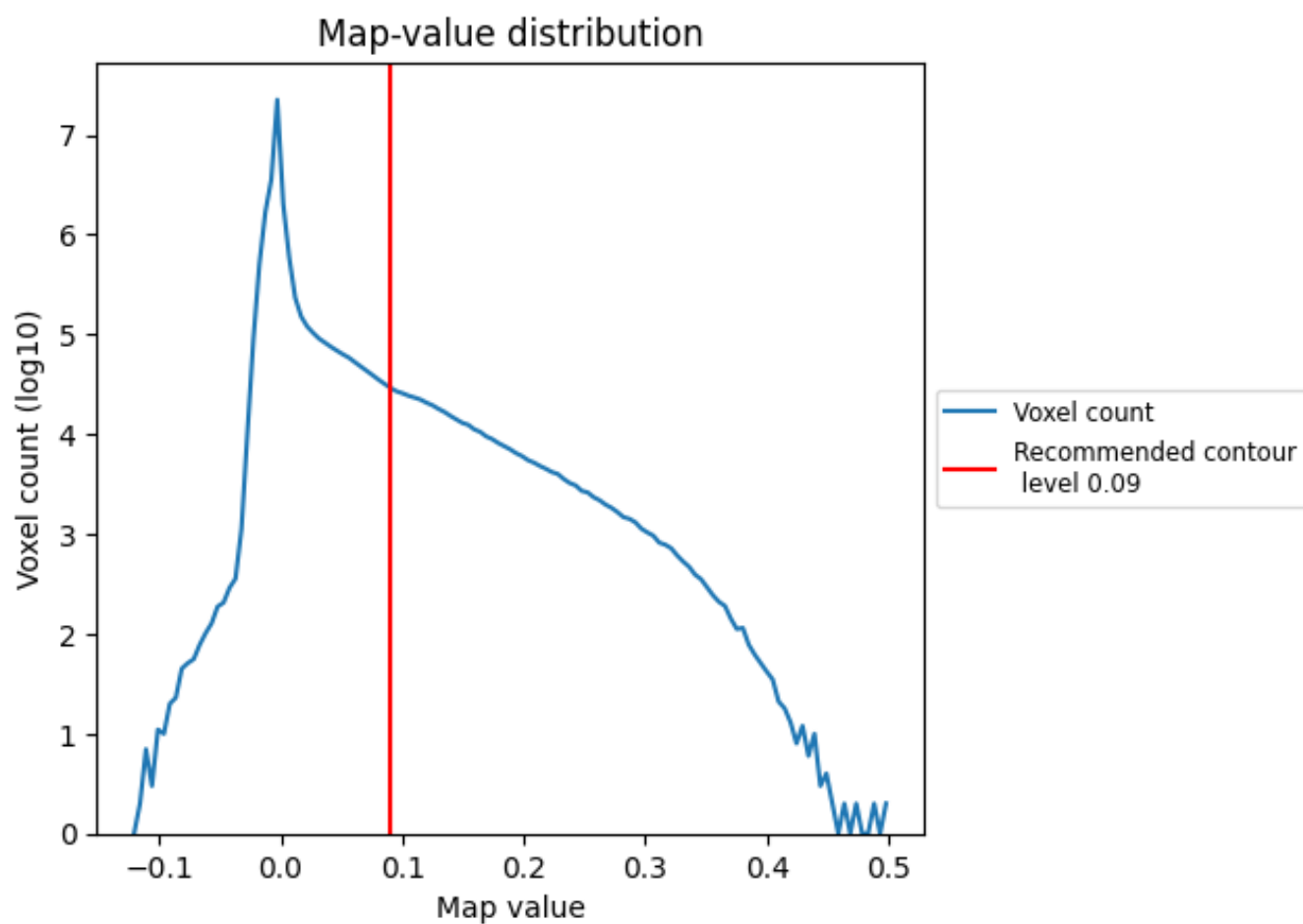
This section was not generated. No masks/segmentation were deposited.



## 7 Map analysis [i](#)

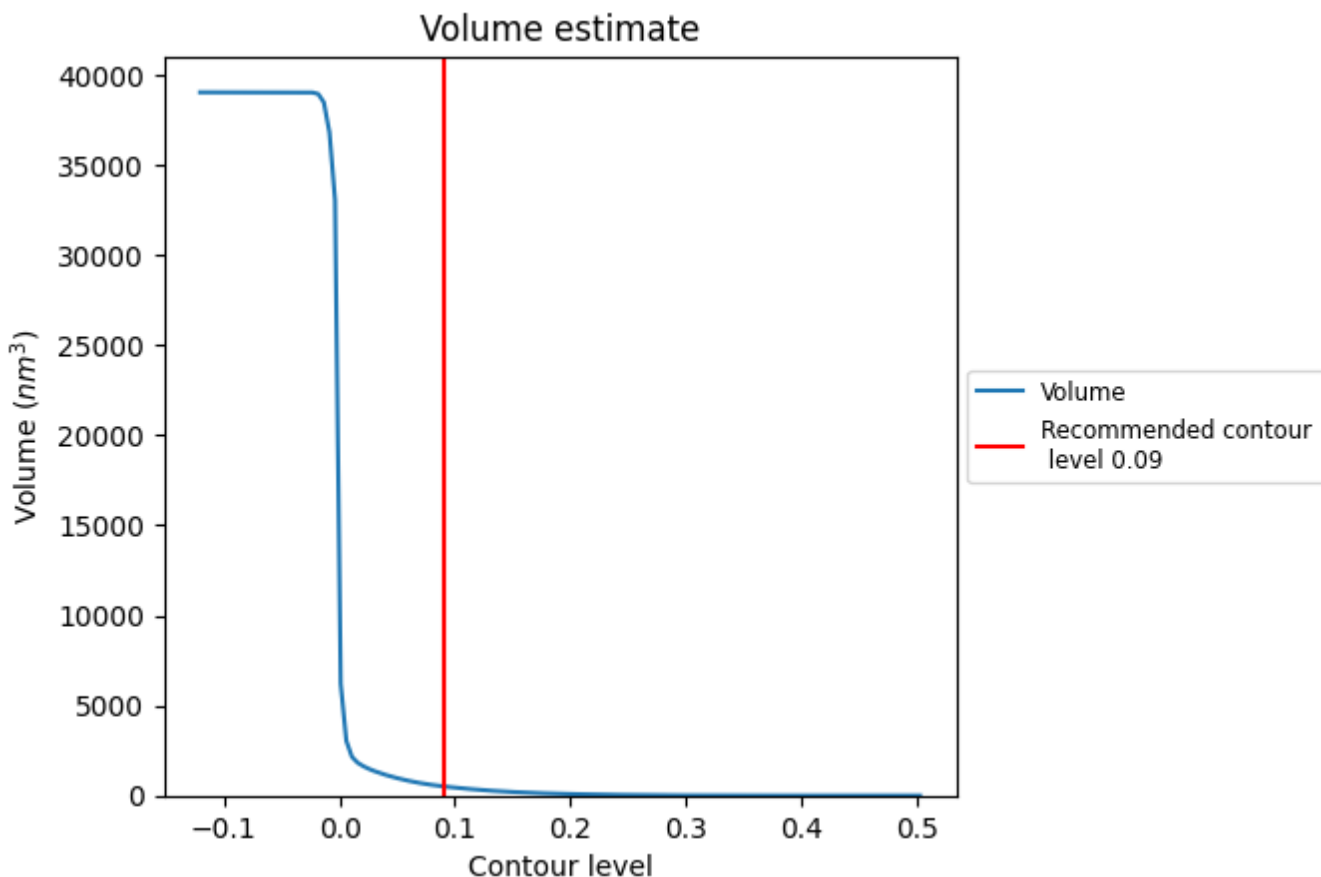
This section contains the results of statistical analysis of the map.

### 7.1 Map-value distribution [i](#)



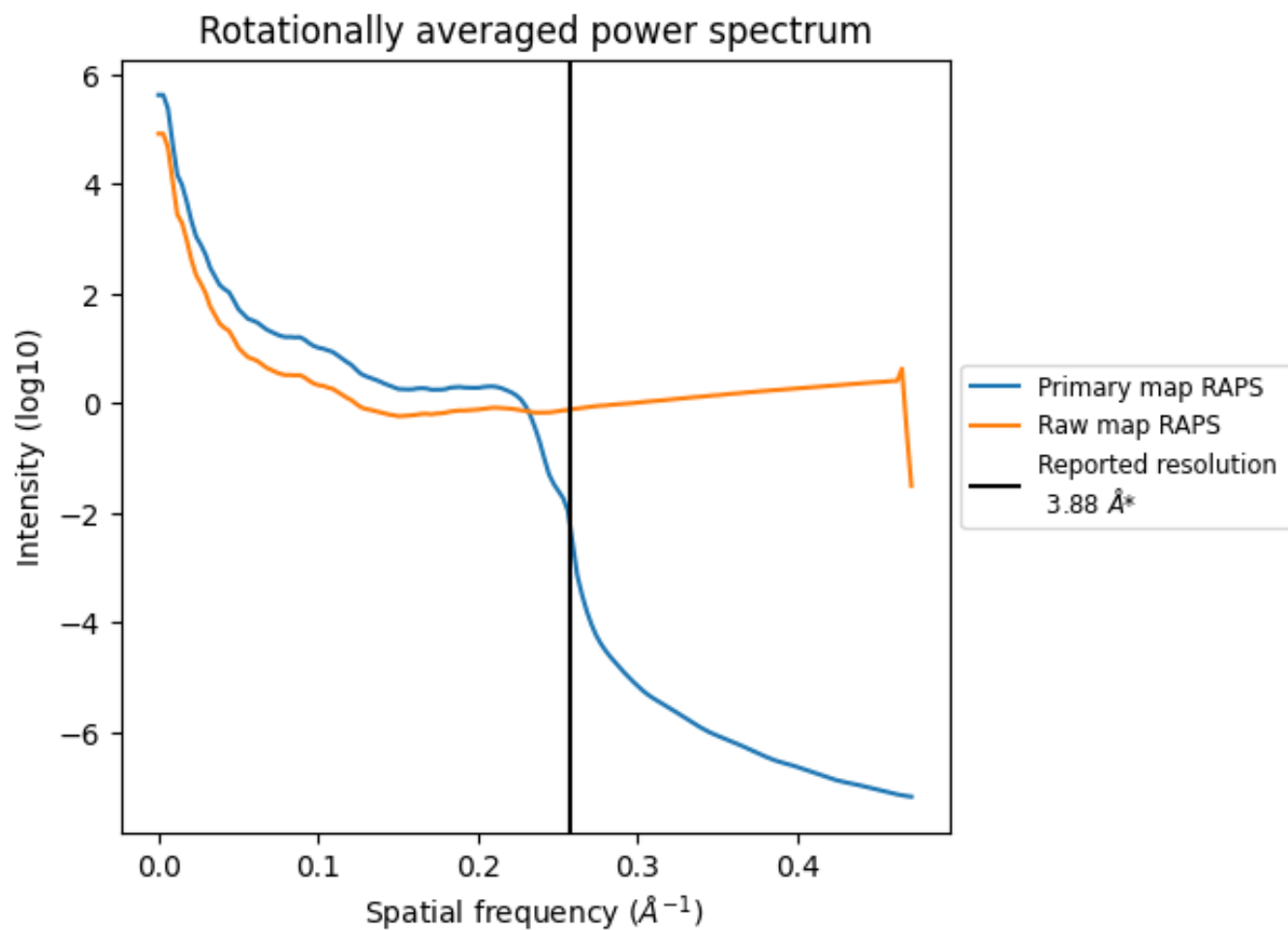
The map-value distribution is plotted in 128 intervals along the x-axis. The y-axis is logarithmic. A spike in this graph at zero usually indicates that the volume has been masked.

## 7.2 Volume estimate [i](#)



The volume at the recommended contour level is 510  $\text{nm}^3$ ; this corresponds to an approximate mass of 461 kDa.

The volume estimate graph shows how the enclosed volume varies with the contour level. The recommended contour level is shown as a vertical line and the intersection between the line and the curve gives the volume of the enclosed surface at the given level.

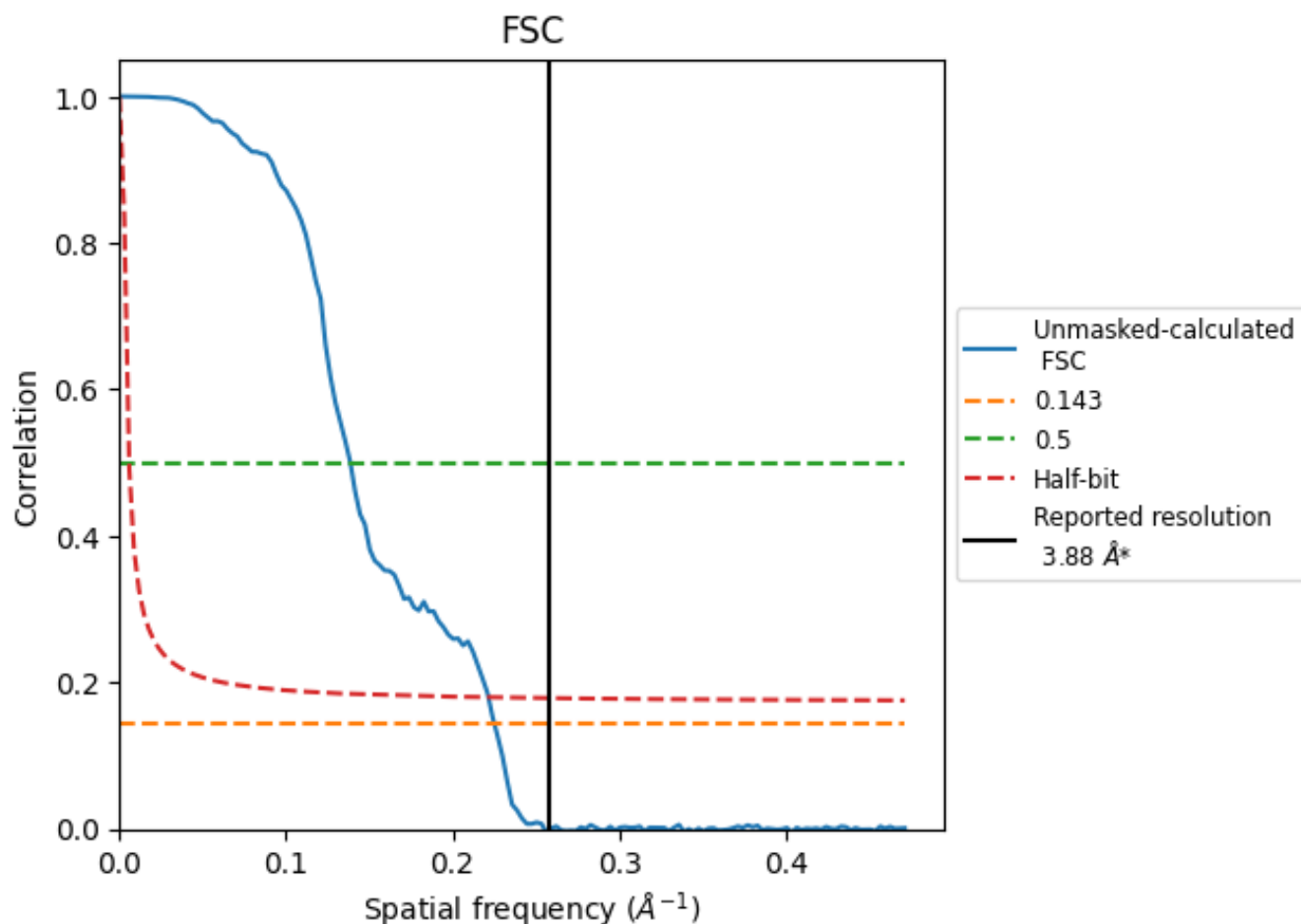
7.3 Rotationally averaged power spectrum 

\*Reported resolution corresponds to spatial frequency of 0.258 Å<sup>-1</sup>

## 8 Fourier-Shell correlation [i](#)

Fourier-Shell Correlation (FSC) is the most commonly used method to estimate the resolution of single-particle and subtomogram-averaged maps. The shape of the curve depends on the imposed symmetry, mask and whether or not the two 3D reconstructions used were processed from a common reference. The reported resolution is shown as a black line. A curve is displayed for the half-bit criterion in addition to lines showing the 0.143 gold standard cut-off and 0.5 cut-off.

### 8.1 FSC [i](#)



\*Reported resolution corresponds to spatial frequency of 0.258 Å<sup>-1</sup>

## 8.2 Resolution estimates [\(i\)](#)

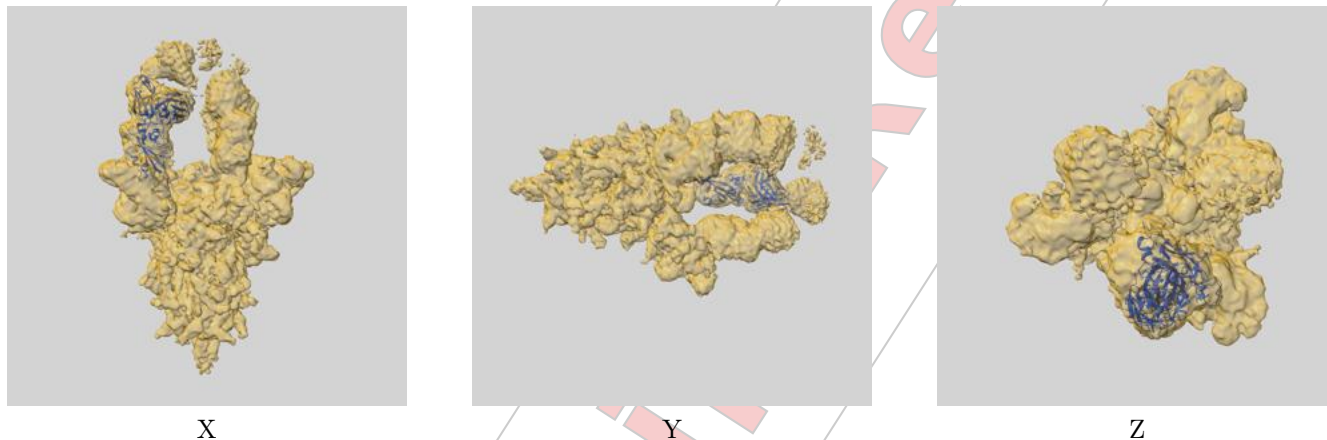
Resolution estimate (Å)	Estimation criterion (FSC cut-off)		
	0.143	0.5	Half-bit
Reported by author	3.88	-	-
Author-provided FSC curve	-	-	-
Unmasked-calculated*	4.44	7.22	4.51

\*Resolution estimate based on FSC curve calculated by comparison of deposited half-maps. The value from deposited half-maps intersecting FSC 0.143 CUT-OFF 4.44 differs from the reported value 3.88 by more than 10 %

## 9 Map-model fit [i](#)

This section contains information regarding the fit between EMDB map EMD-36789 and PDB model 8K19. Per-residue inclusion information can be found in section 3 on page 5.

### 9.1 Map-model overlay [i](#)



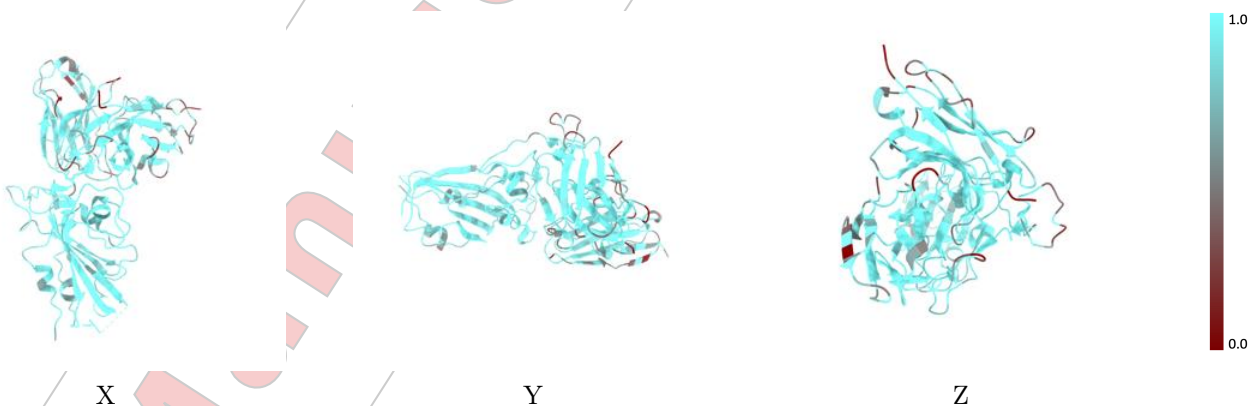
The images above show the 3D surface view of the map at the recommended contour level 0.09 at 50% transparency in yellow overlaid with a ribbon representation of the model coloured in blue. These images allow for the visual assessment of the quality of fit between the atomic model and the map.

## 9.2 Q-score mapped to coordinate model [\(i\)](#)



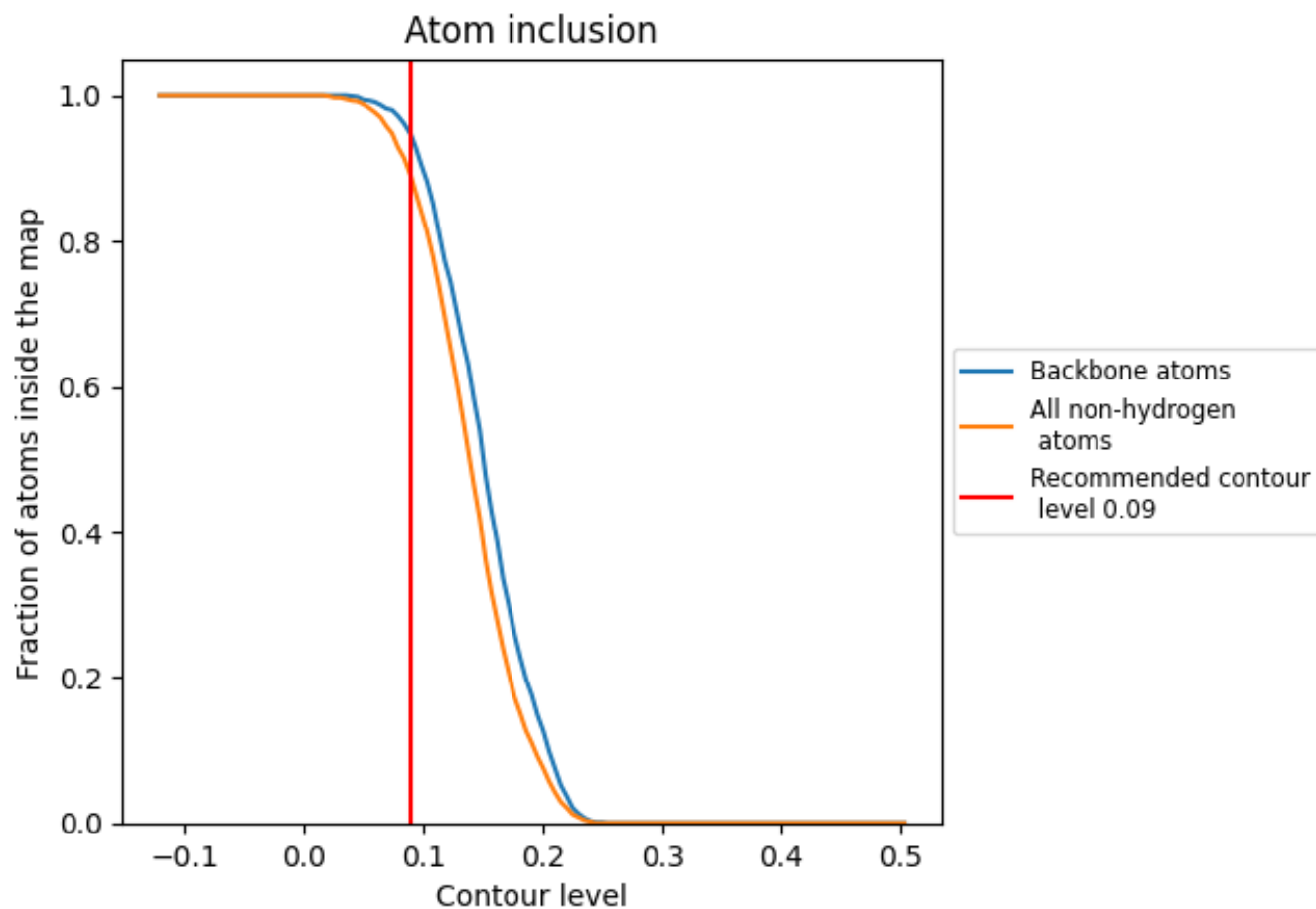
The images above show the model with each residue coloured according to its Q-score. This shows their resolvability in the map with higher Q-score values reflecting better resolvability. Please note: Q-score is calculating the resolvability of atoms, and thus high values are only expected at resolutions at which atoms can be resolved. Low Q-score values may therefore be expected for many entries.

## 9.3 Atom inclusion mapped to coordinate model [\(i\)](#)



The images above show the model with each residue coloured according to its atom inclusion. This shows to what extent they are inside the map at the recommended contour level (0.09).

## 9.4 Atom inclusion [i](#)











At the recommended contour level, 95% of all backbone atoms, 89% of all non-hydrogen atoms, are inside the map.



## 9.5 Map-model fit summary [i](#)

The table lists the average atom inclusion at the recommended contour level (0.09) and Q-score for the entire model and for each chain.

Chain	Atom inclusion	Q-score
All	 0.8890	 0.1410
A	 0.8560	 0.0870
B	 0.8690	 0.0970
E	 0.9200	 0.1980

