

# The therapeutic target of non-small cell lung cancer

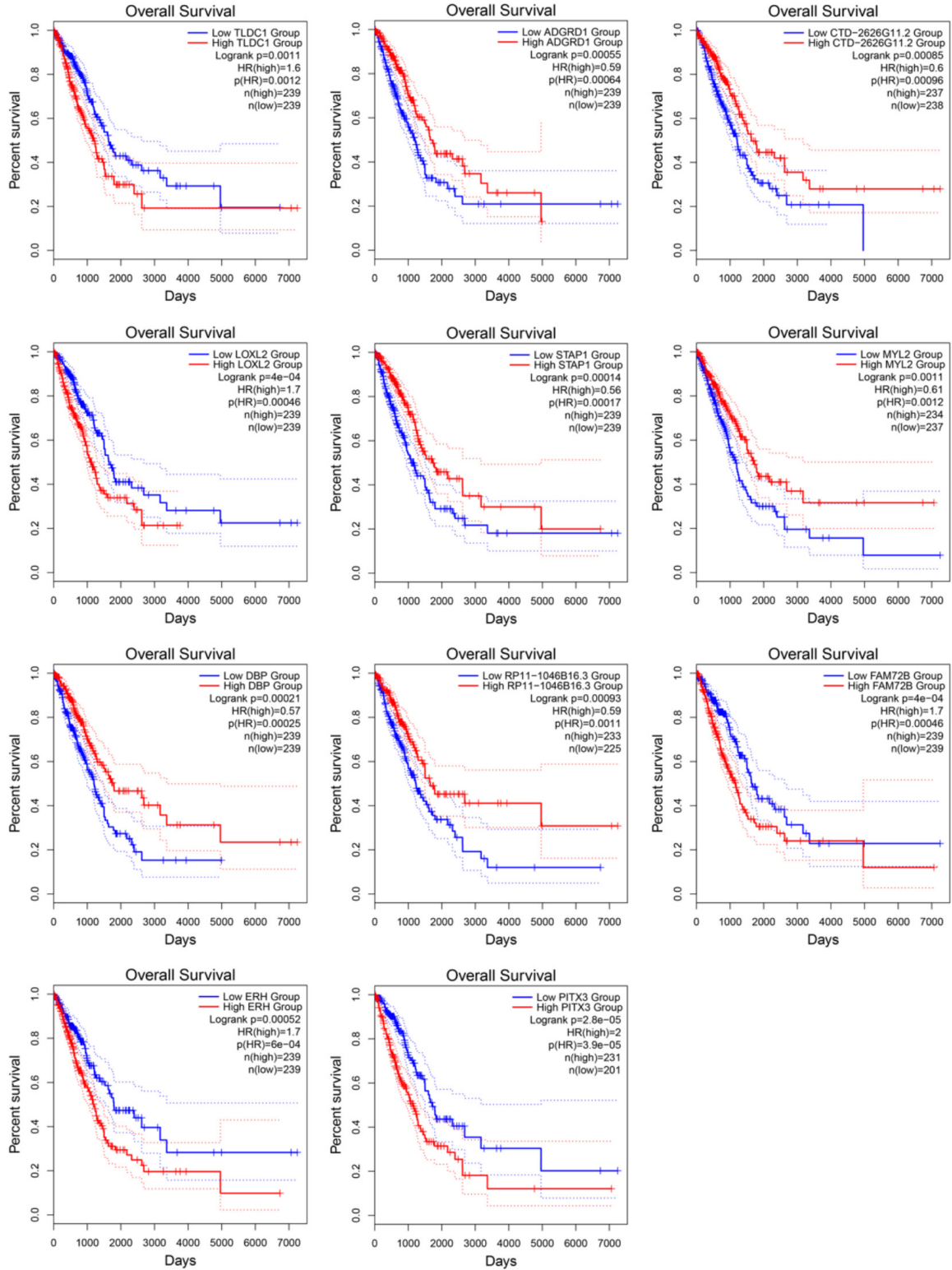


Figure S1. Survival curves of overall survival in LUAD in GEPIA cohorts.

# The therapeutic target of non-small cell lung cancer

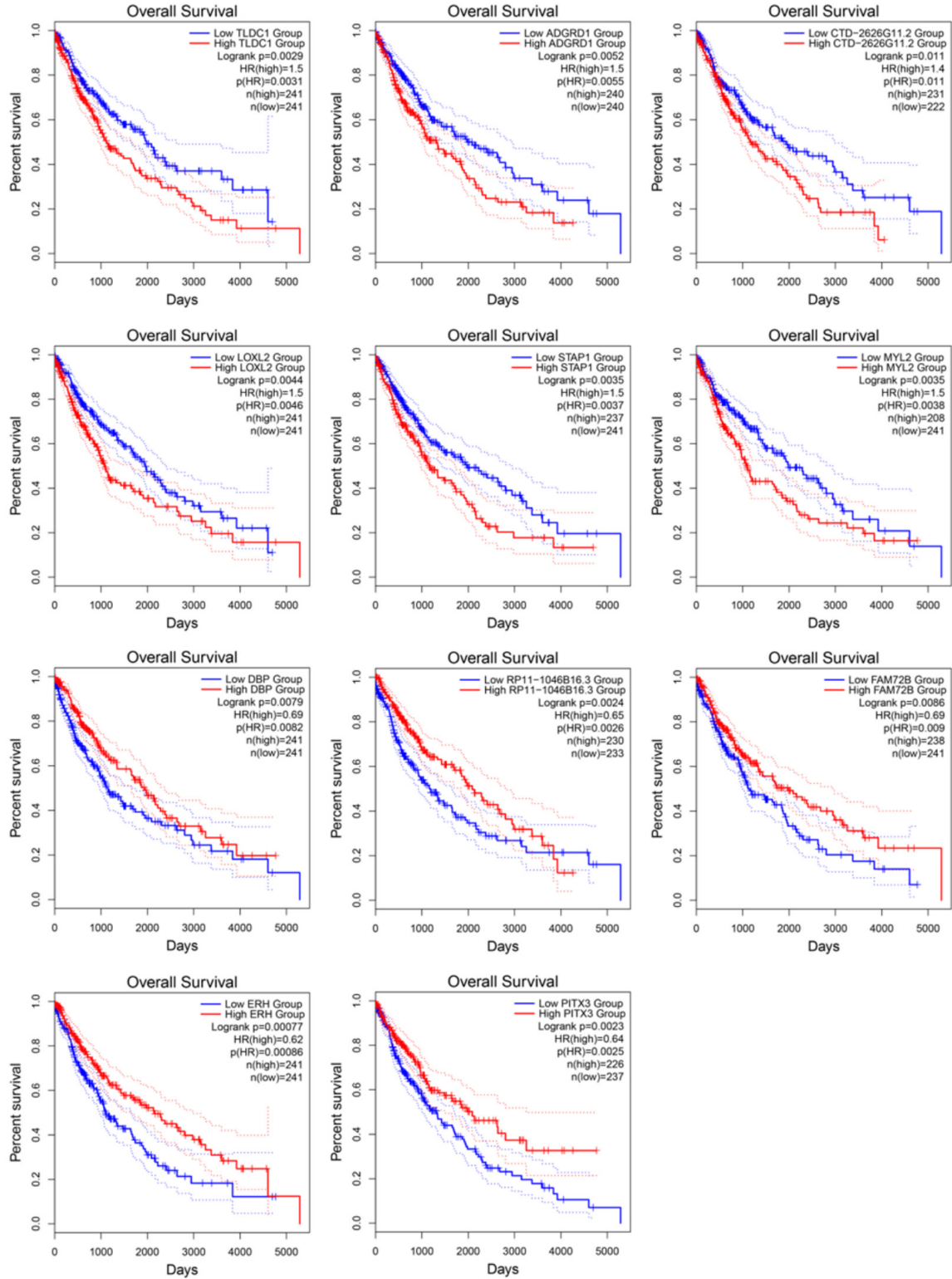
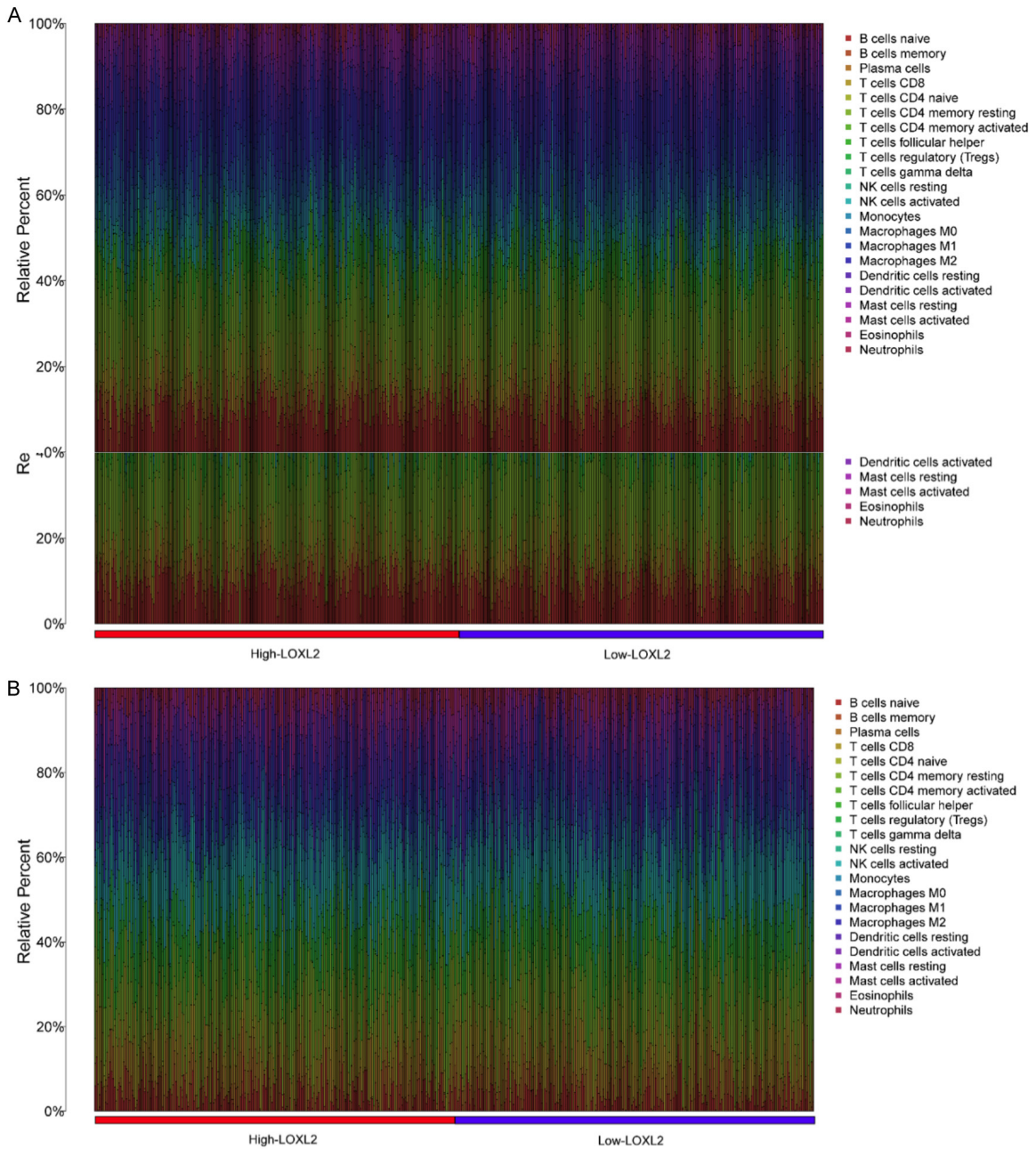


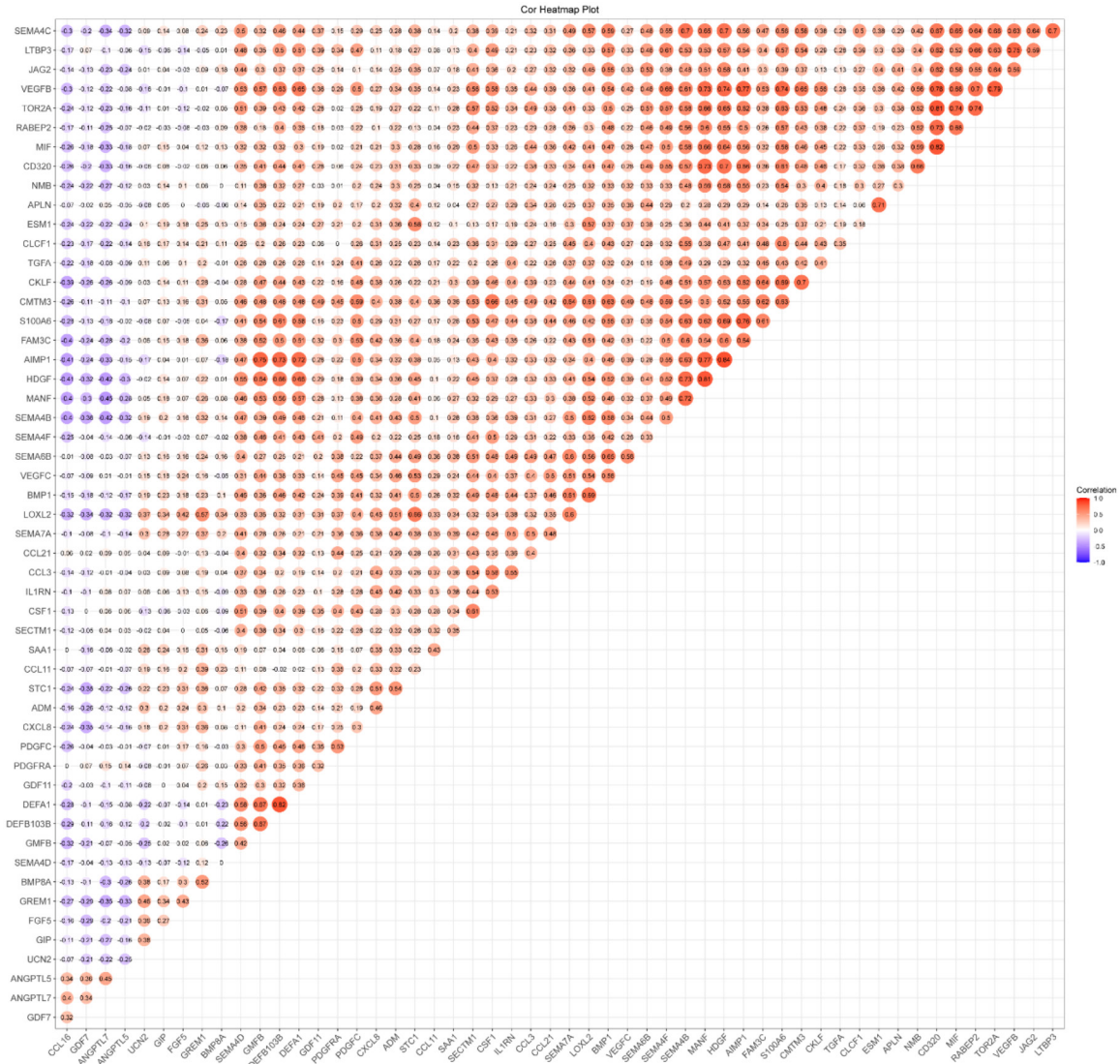
Figure S2. Survival curves of overall survival in LUSC in GEPIA cohorts.

## The therapeutic target of non-small cell lung cancer



**Figure S3.** A, B. Taking the median TMB value as a cutoff, the relative expression of 22 tumor-infiltrating immune cells (Dendritic cells activated, Dendritic cells quiescent, Macrophages M2, T cell follicular helper cells, T cell regulatory (Tregs), T cell  $\gamma\delta$ , NK cells quiescent, NK cells activated, Monocytes, Macrophages M0, Macrophages M1, T cell CD4 memory activated, T cell CD4 memory quiescent, T cell CD4 naive, T cell CD8, Plasma cells, B cell memory, and B cell naive) in the low-TBM and high-TBM samples was determined.

# The therapeutic target of non-small cell lung cancer



**Figure S4.** Correlation analysis of the differential up-regulation and down-regulation of related genes on LUAD and LUSC.