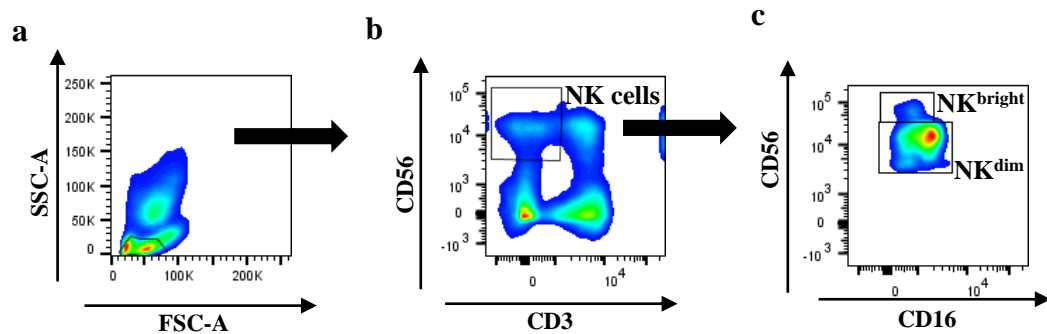
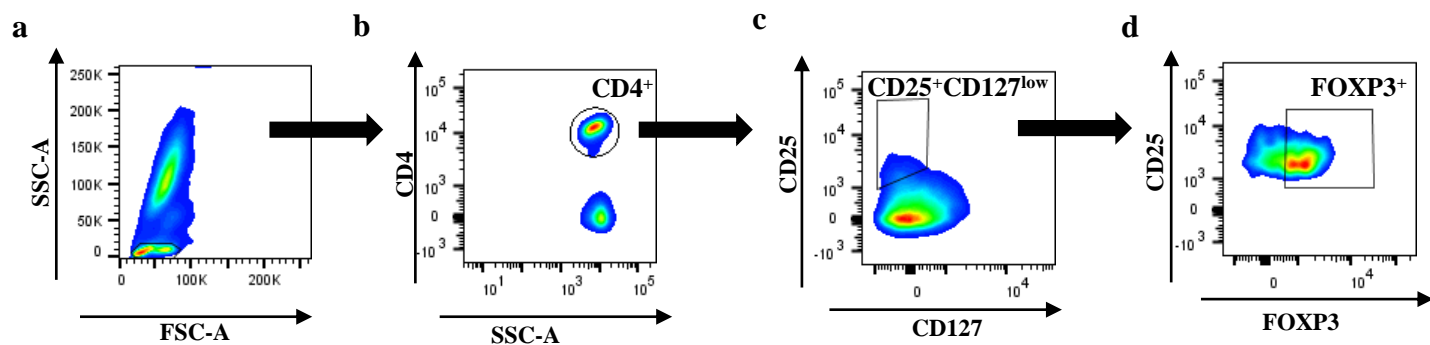


A**B**

Supplementary Figure S1. Gating strategy for identification of Tregs and NKs in peripheral blood.

(A) NKs: (a) Lymphocyte gate on FSC/SSC (b) identification CD3⁺CD56⁺ (total NKs) (c) identification of CD3⁺CD56^{dim}CD16⁺ (NKs^{dim}) and CD3⁺CD56^{bright}CD16^{-/+} (NKs^{bright}). (B) Tregs: (a) Lymphocyte gate on FSC/SSC (b) identification of CD4⁺ T cells within lymphocyte population (c) identification of CD4⁺CD25⁺CD127^{low} (d) identification of CD4⁺CD25⁺CD127^{low}Foxp3⁺.