

Role of FXYD3 as a potential oncogene and early biomarker in pancreatic cancer

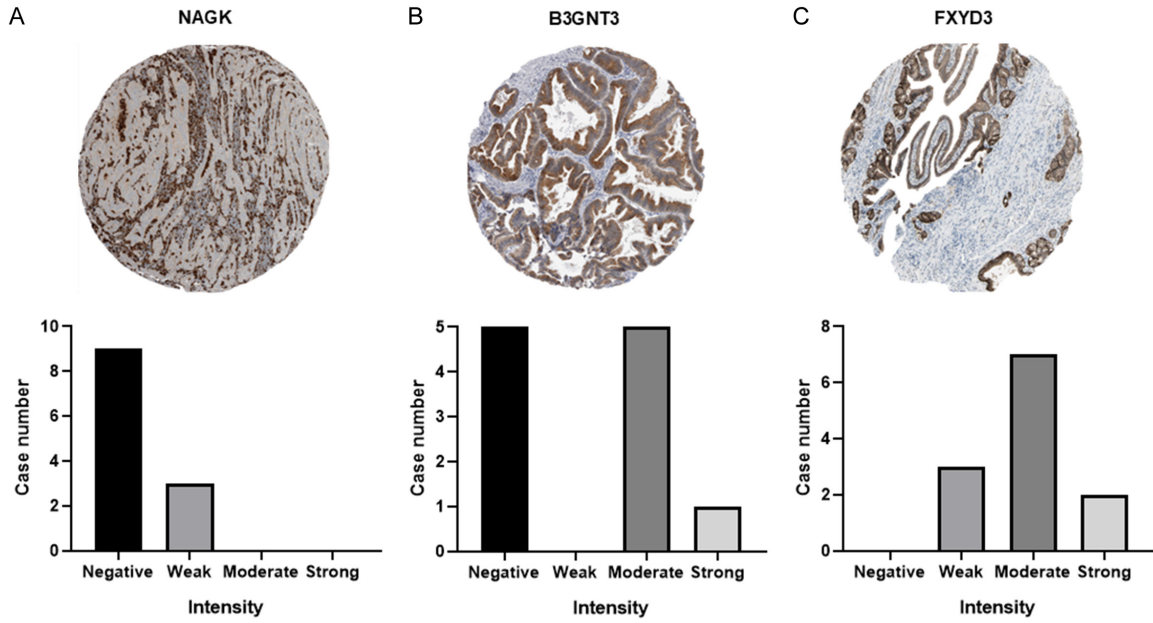


Figure S1. The protein expression of pancreatic cancer patients (n=12) by HPA database. The intensity of antibody of (A) NAGK, (B) B3GNT3, (C) FXYD3. X axis represents the intensity of the antibody and Y axis represents the case number.

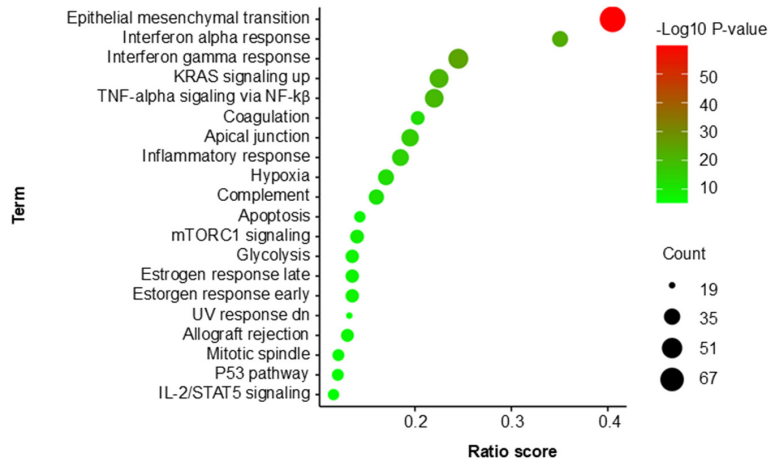


Figure S2. Pathway enrichment analysis of GEO datasets. The dot plot shows the top 20 pathways from the MSigDb.

Role of FXYD3 as a potential oncogene and early biomarker in pancreatic cancer

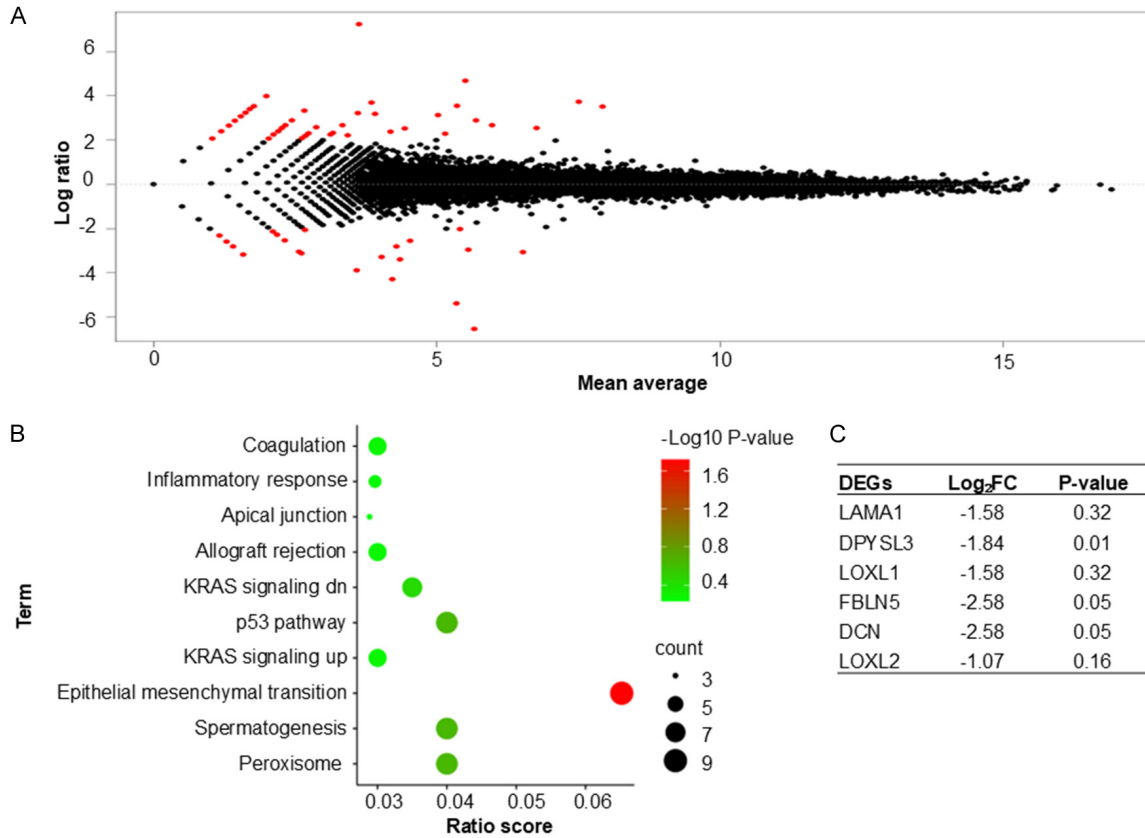


Figure S3. The identification of FXYD3-related DEGs in pancreatic cancer. A. The MA plot of DEGs ($\text{Log}_2\text{FC} < 0.05$). B. The top 10 molecular pathways related to FXYD3. C. The EMT-related genes.