

BARGs as a diagnostic marker of ccRCC

Supplementary Table 1. The brown adipocytes-related genes list

Brown adipocytes-related genes list

CPM
SFN
INS
SLIT3
PCDHB12
ACTB
ACTA1
GRN
CTSZ
PI3
MGP
CFL2
ELN
HBB
HBD
TIMP4
SERPINB4
ITM2B
ORM1
DEFA3
DEFA1
CD59
PPP1R1A
C6
CTSC
LRRN4CL
LAMP1
CES1
SCGB1D2
RNASE7
DAG1
FAU
LTBP1
SRGN
ENO3
FBN2
IDE
ERP29
APOC1
AOC3
SDCBP
CLSTN1
FKBP2
SPARCL1
RCN3
PRDX4
HEBP1

BARGs as a diagnostic marker of ccRCC

DHRS11
CALU
GM2A
C4A
C4B
SFRP1
ORM2
PTPRG
DNASE2
C1QTNF1
SLURP1
TTR
OMD
SERPINB5
IL1RN
IL36G
CHI3L1
ENPP2
PODN
OAF
LAMB2
SUMF2
EFNB1
TUBA4A
CNPY2
MCFD2
EPDR1
TTN
STATH
TFPI
TIMM8B
ERP44
KLK7
GBP2
SBSN
ERAP1
PSAPL1
GNB2
A2ML1
GLB1
VIT
SRPX2
TGOLN2
CXCL12
DPYSL3
SERPINB2
ANG
ABI3BP
TFRC

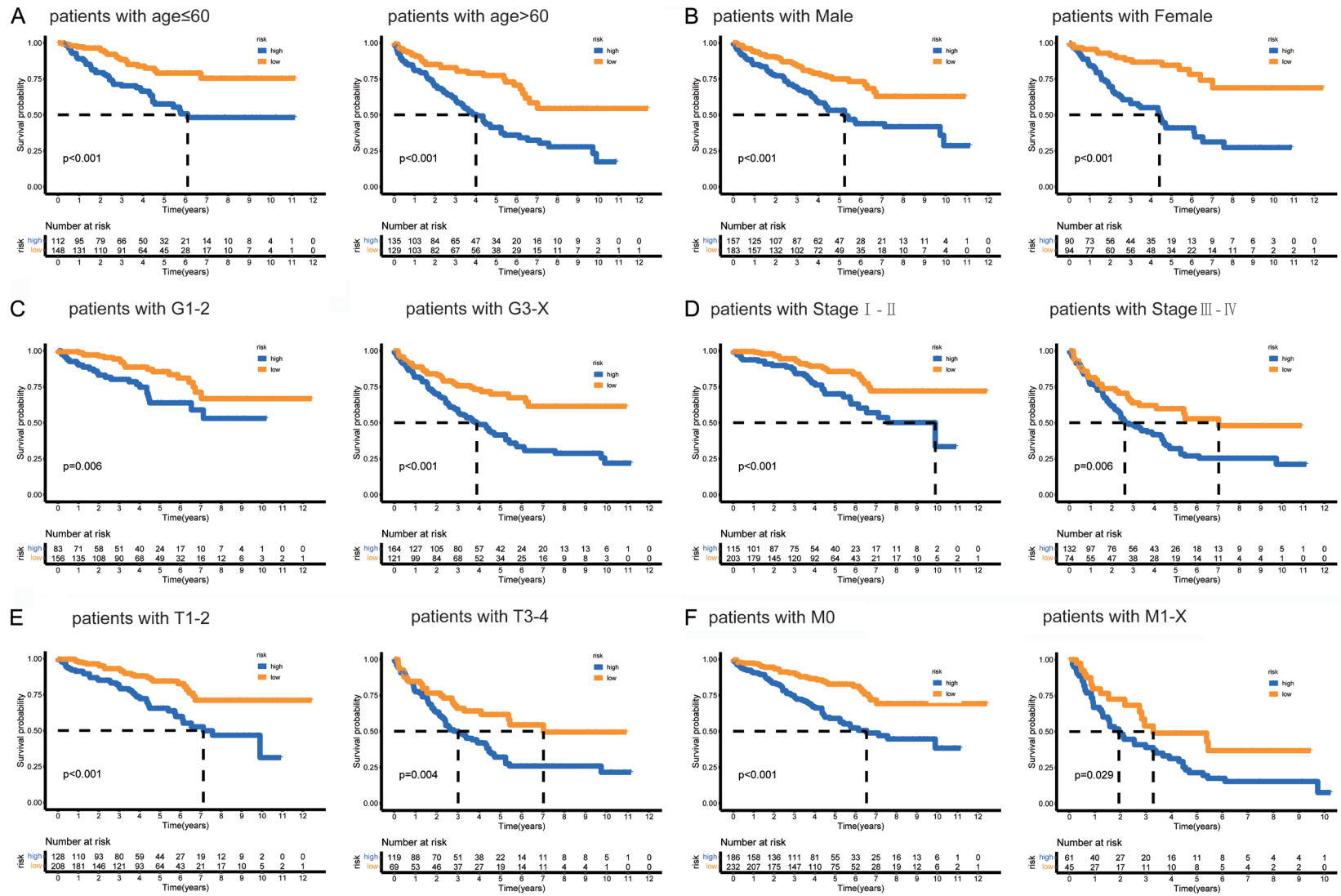
BARGs as a diagnostic marker of ccRCC

LCN2
 RNASET2
 PTPRM
 C1RL
 FKBP7
 LY6D

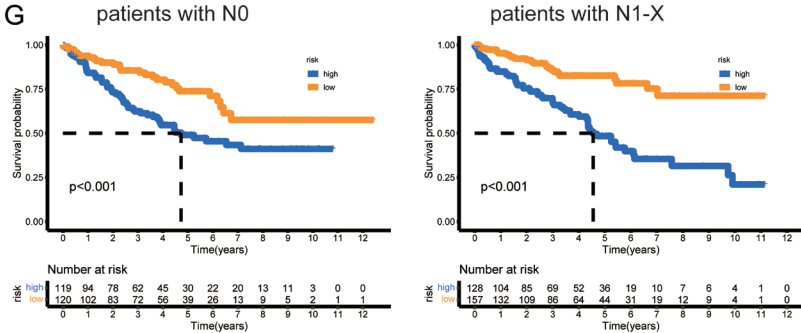
Supplementary Table 2. Univariate cox regression screened the prognostic-related BARGs

BASGs	HR	HR.95L	HR.95H	uniCOX (<i>p</i>)	K-M (<i>p</i>)
ORM1	1.018018	1.010836	1.025252	7.68E-07	0.004
RCN3	1.001872	1.001087	1.002657	2.89E-06	4.10E-05
PTPRM	0.989829	0.985257	0.994422	1.50E-05	9.08E-07
ORM2	1.032442	1.016679	1.048448	4.76E-05	2.69E-06
C1QTNF1	1.004283	1.002061	1.006509	1.55E-04	2.71E-05
SPARCL1	0.999195	0.998755	0.999635	3.37E-04	1.78E-05
PPP1R1A	1.002924	1.001302	1.004548	4.06E-04	2.93E-09
DPYSL3	1.002192	1.000975	1.003412	4.15E-04	1.18E-06
ANG	0.981099	0.969521	0.992815	0.002	1.14E-04
RNASET2	1.007002	1.002211	1.011816	0.004	9.84E-06
ENPP2	0.999006	0.998283	0.999729	0.007	1.38E-05
SCGB1D2	0.974614	0.956549	0.993019	0.007	2.37E-07
CTSZ	1.000634	1.000118	1.00115	0.016	1.38E-04
GM2A	0.995904	0.992407	0.999414	0.022	4.07E-06
PCDHB12	0.934664	0.872721	1.001004	0.053	0.008
APOC1	1.001039	0.999968	1.002112	0.057	0.007
CXCL12	0.997296	0.994015	1.000588	0.107	3.12E-04
DAG1	0.99431	0.987255	1.001415	0.116	0.003
GBP2	1.002158	0.99922	1.005105	0.150	0.017

BARGs as a diagnostic marker of ccRCC



BARGs as a diagnostic marker of ccRCC



Supplementary Figure 1. K-M survival analysis of the risk signature in ccRCC patients stratified by different clinical parameters in TCGA dataset. (A) Age, (B) gender, (C) grade, (D) stage, and (E) T, (F) M, (G) N staging.