

SUPPLEMENTARY APPENDIX

Efficacy of Trastuzumab Deruxtecan in HER2-Expressing Solid Tumors by Enrollment HER2 IHC Status: Post-Hoc Analysis of DESTINY-PanTumor02

Ana Oaknin, MD, PhD¹; Jung-Yun Lee, MD²; Vicky Makker, MD³; Do-Youn Oh, MD⁴; Susana Banerjee, PhD⁵; Antonio González-Martín, MD⁶; Kyung Hae Jung, MD⁷; Iwona Ługowska, MD⁸; Luis Manso, MD⁹; Aránzazu Manzano, MD¹⁰; Bohuslav Melichar, MD¹¹; Salvatore Siena, MD¹²; Daniil Stroyakovskiy, MD¹³; Anitra Fielding, MBChB¹⁴; Soham Puvvada, MD¹⁴; Ann Smith, MSc¹⁵; and Funda Meric-Bernstam, MD¹⁶

¹Medical Oncology Service, Vall d'Hebron Institute of Oncology, Vall d'Hebron Barcelona Hospital Campus, Barcelona, Spain

²Department of Obstetrics and Gynecology, Yonsei Cancer Center and Severance Hospital, Yonsei University College of Medicine, Seoul, Republic of Korea

³Gynecologic Medical Oncology Service, Memorial Sloan Kettering Cancer Center; and Department of Medicine, Weill Cornell Medical College, New York, NY, USA

⁴Seoul National University Hospital; Cancer Research Institute, Seoul National University College of Medicine; and Integrated Major in Innovative Medical Science, Seoul National University Graduate School, Seoul, Republic of Korea

⁵Gynaecology Unit, The Royal Marsden NHS Foundation Trust; and Institute of Cancer Research, London, UK

⁶Medical Oncology Department and Programme in Solid Tumours-CIMA, Cancer Center Clínica Universidad de Navarra, Madrid, Spain

⁷Department of Oncology, Asan Medical Center, University of Ulsan College of Medicine, Seoul, Republic of Korea

⁸Early Phase Clinical Trials Unit, Maria Skłodowska-Curie National Research Institute of Oncology, Warsaw, Poland

⁹Department of Medical Oncology, Hospital Universitario 12 de Octubre, Madrid, Spain

¹⁰Experimental Therapeutics in Cancer (UTEC), Department of Medical Oncology, Hospital Clínico San Carlos, Madrid, Spain

¹¹Department of Oncology, Palacký University Medical School and University Hospital, Olomouc, Czech Republic

¹²Department of Oncology and Hemato-Oncology, Università degli Studi di Milano; and Niguarda Cancer Center, Grande Ospedale Metropolitano Niguarda, Milan, Italy

¹³Healthcare Department, Moscow City Oncology Hospital No. 62, Moscow, Russia

¹⁴Oncology R&D, AstraZeneca, Gaithersburg, MD, USA

¹⁵Oncology Biometrics, Oncology R&D, AstraZeneca, Cambridge, UK

¹⁶Department of Investigational Cancer Therapeutics, The University of Texas MD Anderson Cancer Center, Houston, TX, USA

CORRESPONDING AUTHOR

Professor Funda Meric-Bernstam, MD; Department of Investigational Cancer Therapeutics, The University of Texas MD Anderson Cancer Center, Houston, TX 77030, USA; email: fmeric@mdanderson.org; tel: +1 713 794-1226

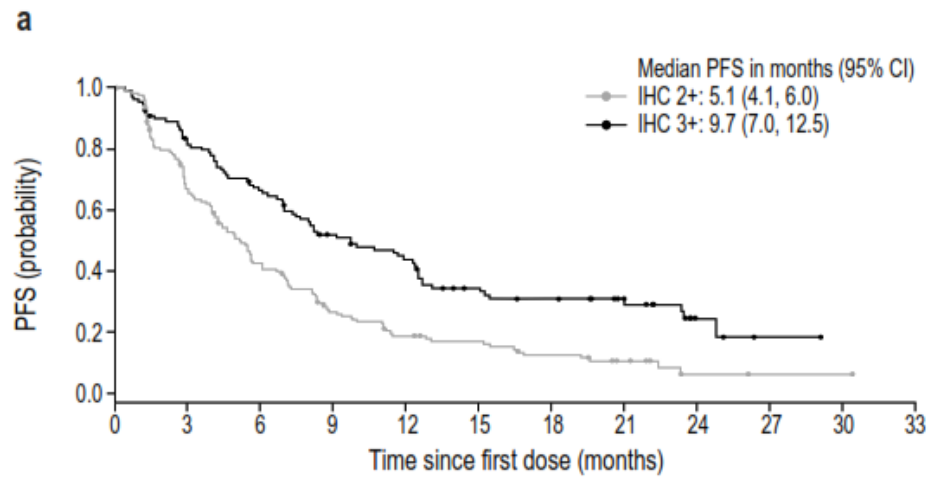
ETHICS COMMITTEES

| Name and address of IEC/IRB |
|--|
| St Vincent's Hospital (Melbourne) HREC, 41 Victoria Parade, Fitzroy, VIC, 3065, Australia |
| Commissie voor Medische Ethiek U(Z) Gent, Corneel Heymanslaan 10, 9000 Gent, Belgium |
| Bureau d'éthique de la recherche du CHU de Quebec, 10 Rue de L'Espinay, Local A0-124, Quebec, G1L 3L5, Canada |
| Etická komise Fakultní nemocnice Hradec Kralove, Sokolska 581, 500 05 Hradec Kralove, Czech Republic |
| Etická komise Masarykova onkologického ústavu, Zlutý kopec 7, 656 53 Brno, Czech Republic |
| Etická komise Fakultní nemocnice Olomouc a LF UP v Olomouci, Zdravotníku 248/7, 775 20 Olomouc, Czech Republic |
| EK Nemocnice Na Bulovce, Budinova 2, 180 81 Praha 8, Czech Republic |
| Etická komise Fakultní nemocnice v Motole, V Uvalu 84, 150 06 Praha 5, Czech Republic |
| Tata Memorial Hospital Institutional Ethics Committee, Dr. E. Borges Road, Main Building, 3rd floor, Parel, Mumbai, Maharashtra, 400012, India |
| Artemis Health Sciences Institutional Ethics Committee, Artemis Hospital Sector 51 Gurugram Haryana 122001, India |
| Rajiv Gandhi Cancer Institute & Research Centre, Institutional Review Board, Sector – V, Rohini, New Delhi, Delhi, 110085, India |
| Tata Medical Center, 14 Major Arterial Road (EW), New Town, Rajarhat, Kolkata, West Bengal, 700160, India |
| Comitato Etico IRCCS Pascale, Via M. Semmola, Napoli, 80131, Italy |
| Comitato Etico Università Cattolica - Policlinico Gemelli, Largo A. Gemelli 8, Roma, 00168, Italy |
| Comitato Etico Degli IRCCS Istituto Europeo Di Oncologia E Centro Cardiologico Monzino, Via Ripamonti 435, Milano, 20141, Italy |
| Comitato Etico Milano Area 3, Piazza Ospedale Maggiore 3, Milano, 20162, Italy |
| Stichting Beoordeling Ethiek Biomedisch Onderzoek, Dr. Nassaulaan 10, Assen, 9401 HK, Netherlands |

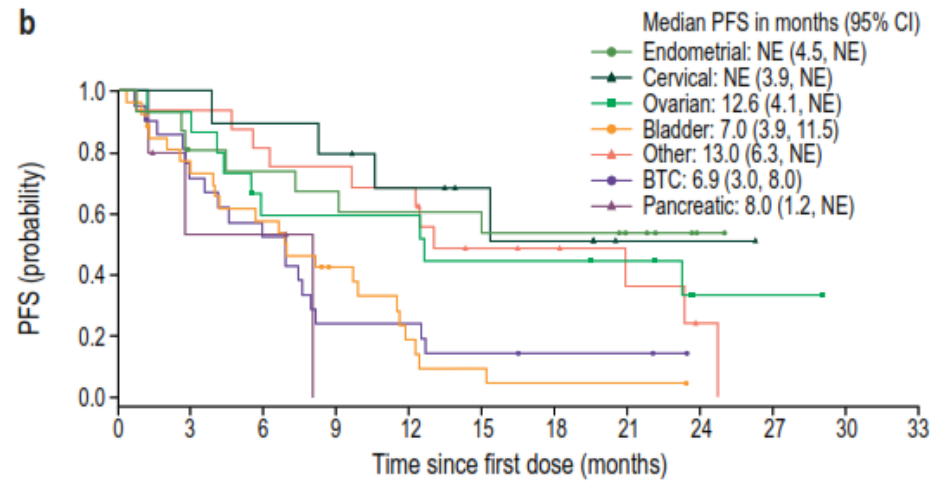
| Name and address of IEC/IRB |
|--|
| Komisja Bioetyczna przy Narodowym Instytucie Onkologii im. Marii Skłodowskiej-Curie, Państwowy Instytut Badawczy, ul. Roentgena 5, Warszawa, 02-781, Poland |
| IEC GBUZ Saint Petersburg Clinical Scientific and Practical, 197758, Saint-Peterburg, 68a lit. A Leningradskaya Str., Russian Federation |
| IIC of ethical examination CR, Independent Interdisciplinary Committee on Ethics Evaluation of Clinical Trials, 51 Leningradskiy pr., Moscow, 125468, Russian Federation |
| LEC of AO Medsi, Krasnaya Presnya street, 16, Moscow, 123242, Russian Federation |
| Ethics Committee at Russian Research Center for Roentgenology and Radiology, 117997, Moscow, 86 Profsoyuznaya Ulitsa, Russian Federation |
| IEC of Blokhin Russian Oncological Center, 115478, Moscow, 23, Kaschirskoe shosse, Russian Federation |
| LEC of Kaluga Regional Clinical Oncology Dispensary, 248007, Kaluga, Ulitsa Vishnevskogo 2, Russian Federation |
| Ethics Committee of Hadassah medical LTD Moscow affiliate, Skolkovo innovation center, Bolshoy boulevard, 46 bld 1, Moscow, 121205, Russian Federation |
| IEC OOO "Komanda", ul. Frunze, d.19, korp 2 Lit A, pom - 37-N, Sankt-Peterburg, 196135, Russian Federation |
| Institutional Review Board of Seoul National University 101, Daehak-ro, Jongno-gu, Seoul, 03080, Republic of Korea |
| Yonsei University Severance Hospital, Institutional Review Board, 250 Seonsanno, Seodaemun-gu, Seoul, 03722, Republic of Korea |
| Institutional Review Board of Samsung Medical Center 81 Irwon-ro, Gangnam-gu, Seoul, 06351, Republic of Korea |
| Institutional Review Board of Asan Medical Center 88, Olympic-ro 43-gil, Songpa-gu, Seoul, 05505, Republic of Korea |
| Hospital Universitario La Paz CEIC, Paseo de la Castellana 261, Planta 11, Secretaría Técnica del CEIC, planta 4ª, despacho 424, Madrid, 28046, Spain |
| Taipei Veterans General Hospital, 322 Shipai Road, Sec. 2, Beitou District, Taipei, 112, Taiwan |

| Name and address of IEC/IRB |
|--|
| IRB Chi Mei Medical Center, No.901, Zhonghua Rd., Yongkang Dist., Tainan, 736, Taiwan |
| National Taiwan University Hospit Institutional Review Board, No. 7, Chung-Shan S. Road, Taipei, 100, Taiwan |
| Taichung Veterans General Hospital IRB, No. 1650 Taiwan Blvd sec. 4, Taichung City, 40705, Taiwan |
| Chang-Gung Memorial Hospital LinKo, No.5, Fu-Hsing Street, Taoyuan, 33305, Taiwan |
| EC Chiang Mai University, 110 Intawaroros Road, Amphoe Muang, Chiang Mai University, Faculty of Medicine, Chiang Mai, 50200 Thailand |
| Central Research Ethics Committee, 196 Moo 5 Phaholyothin Road, Ladyao, Chatuchak, 5th Floor, Building 2, The National Research Council of Thailand, Bangkok, 10900 Thailand |
| North West – Haydock, 4 Minsull Street, 3rd Floor, North West Centre of Research Ethics Committees, Barlow House, Manchester, M1 3DZ, UK |
| The University of Texas MD Anderson Cancer Center IRB, 7007 Bertner Ave. Unit 1637, Houston, Tx, 77030, USA |
| Memorial Sloan Kettering Cancer Center, 1275 York Ave, New York, NY, 10065, USA |
| Dana-Farber Cancer Institute Office of Human Research Studies, 450 Brookline Avenue, Boston, MA, 02215, USA |
| Biomedical Research Alliance of New York (BRANY), 1981 Marcus Avenue, Ste 210, Lake Success, NY, 11042, USA |
| The University of Chicago Medical Center, 5841 South Maryland Avenue, Chicago, IL, 60637, USA |
| WCG IRB, 1019 39th Avenue SE, Suite 120, Puyallup, WA, 98374, USA |
| Castle Institutional Review Board, 16759 Main Street, Wildwood, MO, 63040, USA |
| IU Health Ball Memorial Hospital IRB, 2401 University Avenue, Muncie, IN, 47303, USA |
| Duke University Health System IRB, 2424 Erwin Road, Suite 405, Durham, NC, 27705, USA |

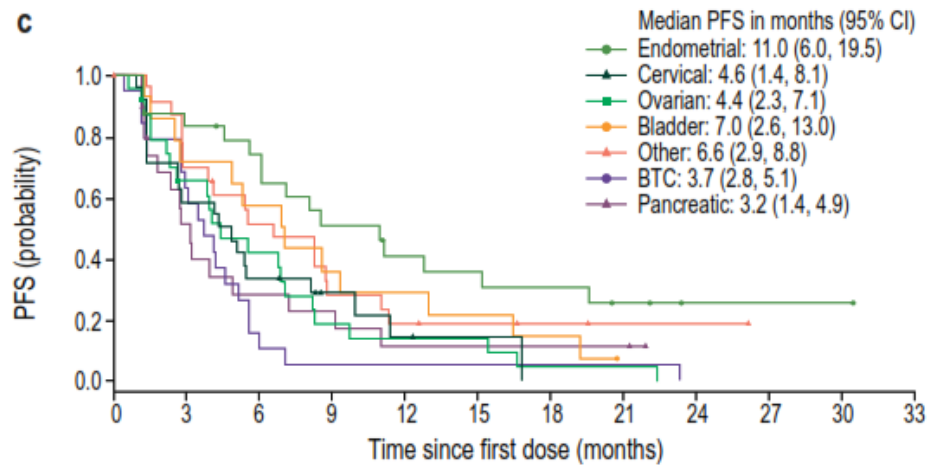
APPENDIX Fig. S1 Kaplan-Meier estimates of PFS and OS according to tumor type and HER2 IHC status by the local or central test used for study enrollment. (a) PFS by investigator assessment in all patients with HER2 IHC 3+ and IHC 2+ tumors. (b) PFS by investigator assessment in patients with HER2 IHC 3+ tumors by tumor cohort. (c) PFS by investigator assessment in patients with HER2 IHC 2+ tumors by tumor cohort. (d) PFS by ICR in all patients with HER2 IHC 3+ and IHC 2+ tumors. (e) PFS by ICR in patients with HER2 IHC 3+ tumors by tumor cohort. (f) PFS by ICR in patients with HER2 IHC 2+ tumors by tumor cohort. (g) OS in all patients with HER2 IHC 3+ and IHC 2+ tumors. (h) OS in patients with IHC 3+ tumors by tumor cohort. (i) OS in patients with IHC 2+ tumors by tumor cohort. *BTC* biliary tract cancer, *CI* confidence interval, *HER2* human epidermal growth factor receptor 2, *ICR* independent central review, *IHC* immunohistochemistry, *NE* not estimable, *OS* overall survival, *PFS* progression-free survival



| No. at risk | | 0 | 3 | 6 | 9 | 12 | 15 | 18 | 21 | 24 | 27 | 30 | 33 |
|-------------|-----|----|----|----|----|----|----|----|----|----|----|----|----|
| IHC 2+ | 151 | 94 | 60 | 35 | 24 | 20 | 14 | 8 | 2 | 1 | 1 | 0 | 0 |
| IHC 3+ | 111 | 87 | 69 | 52 | 43 | 30 | 25 | 17 | 4 | 1 | 0 | 0 | 0 |

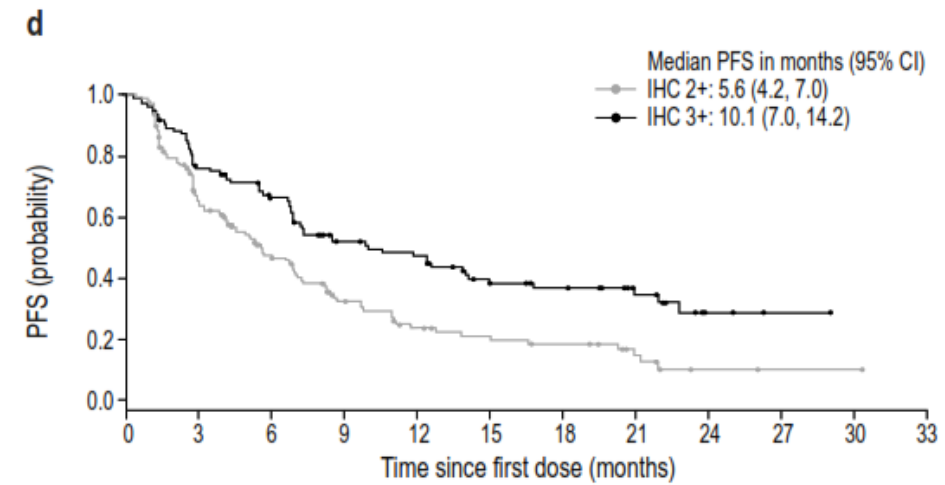


| No. at risk | | 0 | 3 | 6 | 9 | 12 | 15 | 18 | 21 | 24 | 27 | 30 | 33 |
|-------------|----|----|----|----|----|----|----|----|----|----|----|----|----|
| Endometrial | 16 | 12 | 11 | 10 | 9 | 9 | 8 | 5 | 1 | 0 | 0 | 0 | 0 |
| Cervical | 10 | 10 | 9 | 8 | 6 | 4 | 3 | 1 | 1 | 0 | 0 | 0 | 0 |
| Ovarian | 15 | 14 | 8 | 8 | 8 | 6 | 6 | 5 | 1 | 1 | 0 | 0 | 0 |
| Bladder | 27 | 19 | 15 | 9 | 4 | 2 | 1 | 1 | 0 | 0 | 0 | 0 | 0 |
| Other | 16 | 15 | 13 | 12 | 11 | 6 | 5 | 3 | 1 | 0 | 0 | 0 | 0 |
| BTC | 22 | 15 | 11 | 5 | 5 | 3 | 2 | 2 | 0 | 0 | 0 | 0 | 0 |
| Pancreatic | 5 | 2 | 2 | 0 | 0 | 0 | 0 | 0 | 0 | 0 | 0 | 0 | 0 |



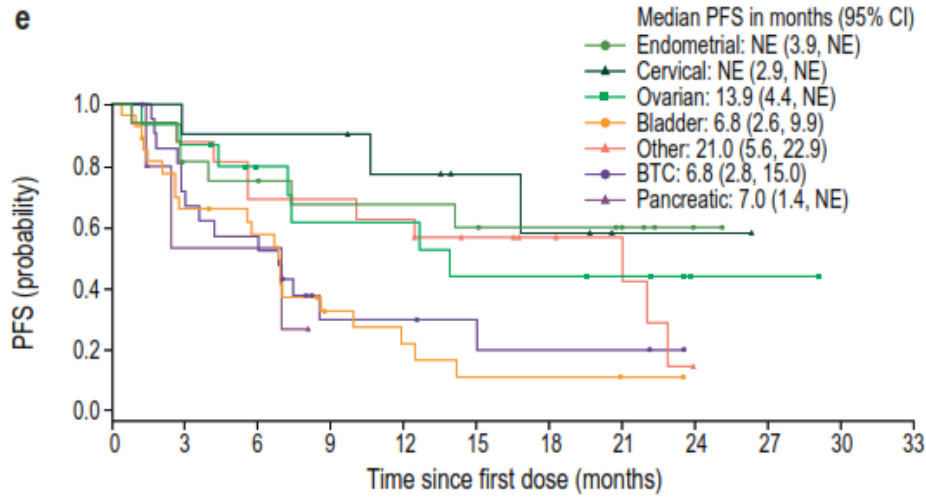
No. at risk

| | | | | | | | | | | | | |
|-------------|----|----|----|----|---|---|---|---|---|---|---|---|
| Endometrial | 24 | 19 | 16 | 11 | 8 | 7 | 6 | 3 | 1 | 1 | 1 | 0 |
| Cervical | 25 | 14 | 8 | 4 | 2 | 1 | 0 | 0 | 0 | 0 | 0 | 0 |
| Ovarian | 25 | 14 | 9 | 4 | 3 | 3 | 1 | 1 | 0 | 0 | 0 | 0 |
| Bladder | 14 | 10 | 8 | 5 | 4 | 3 | 2 | 0 | 0 | 0 | 0 | 0 |
| Other | 24 | 16 | 11 | 6 | 4 | 3 | 2 | 1 | 1 | 0 | 0 | 0 |
| BTC | 19 | 12 | 3 | 1 | 1 | 1 | 1 | 1 | 0 | 0 | 0 | 0 |
| Pancreatic | 20 | 9 | 5 | 4 | 2 | 2 | 2 | 2 | 0 | 0 | 0 | 0 |

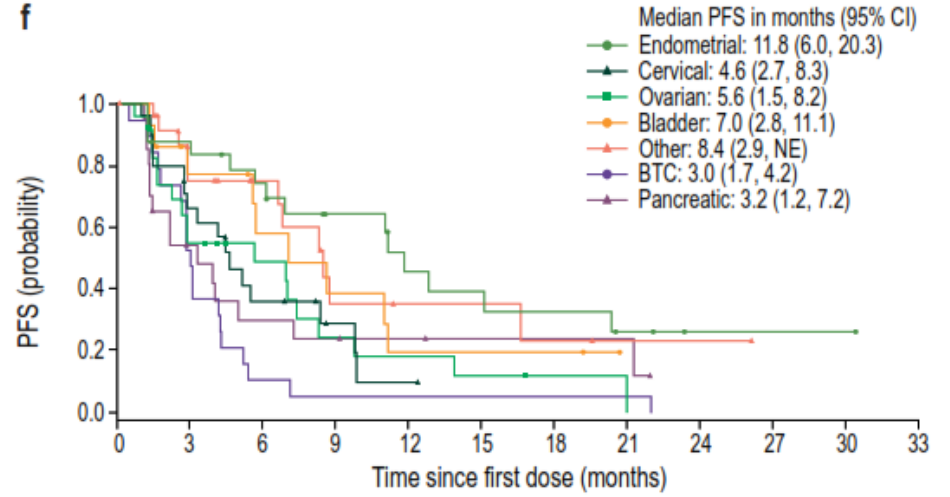


No. at risk

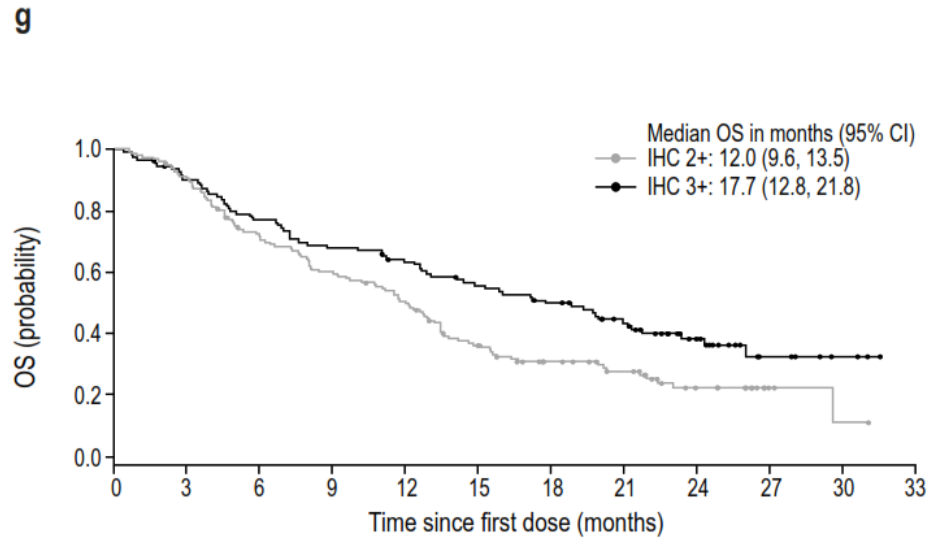
| | | | | | | | | | | | | |
|--------|-----|----|----|----|----|----|----|----|---|---|---|---|
| IHC 2+ | 151 | 86 | 54 | 31 | 20 | 16 | 13 | 7 | 2 | 1 | 1 | 0 |
| IHC 3+ | 111 | 81 | 66 | 46 | 40 | 29 | 24 | 15 | 3 | 1 | 0 | 0 |



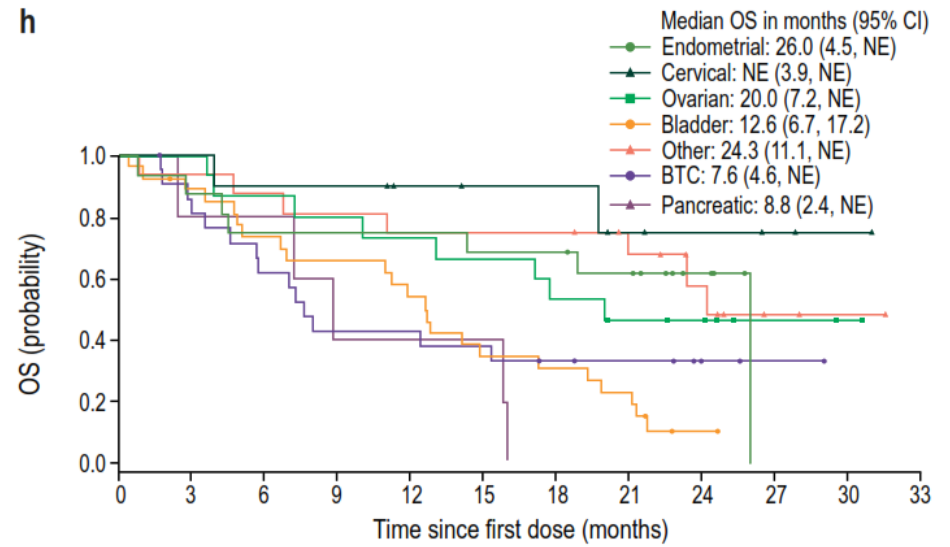
| No. at risk | 0 | 3 | 6 | 9 | 12 | 15 | 18 | 21 | 24 | 27 | 30 | 33 |
|-------------|----|----|----|----|----|----|----|----|----|----|----|----|
| Endometrial | 16 | 12 | 10 | 9 | 9 | 8 | 7 | 4 | 1 | 0 | 0 | 0 |
| Cervical | 10 | 9 | 9 | 9 | 6 | 4 | 3 | 1 | 1 | 0 | 0 | 0 |
| Ovarian | 15 | 13 | 9 | 7 | 7 | 5 | 5 | 4 | 1 | 1 | 0 | 0 |
| Bladder | 27 | 17 | 14 | 6 | 4 | 2 | 2 | 1 | 0 | 0 | 0 | 0 |
| Other | 16 | 14 | 11 | 11 | 10 | 7 | 5 | 3 | 0 | 0 | 0 | 0 |
| BTC | 22 | 14 | 11 | 4 | 4 | 3 | 2 | 2 | 0 | 0 | 0 | 0 |
| Pancreatic | 5 | 2 | 2 | 0 | 0 | 0 | 0 | 0 | 0 | 0 | 0 | 0 |



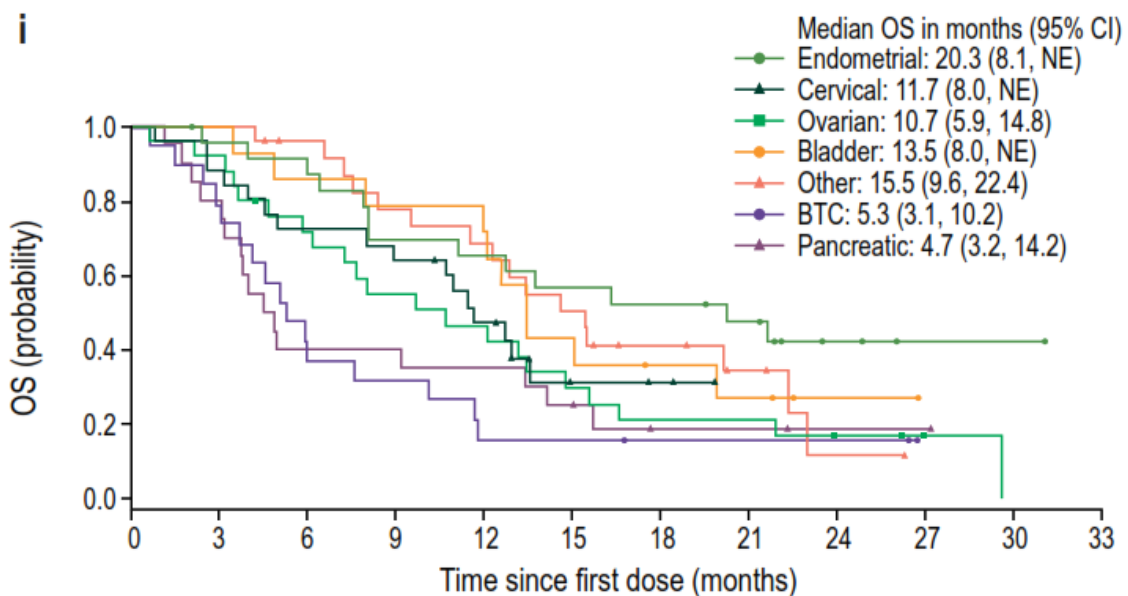
| No. at risk | 0 | 3 | 6 | 9 | 12 | 15 | 18 | 21 | 24 | 27 | 30 | 33 |
|-------------|----|----|----|----|----|----|----|----|----|----|----|----|
| Endometrial | 24 | 19 | 16 | 11 | 7 | 6 | 5 | 3 | 1 | 1 | 1 | 0 |
| Cervical | 25 | 14 | 7 | 3 | 1 | 0 | 0 | 0 | 0 | 0 | 0 | 0 |
| Ovarian | 25 | 12 | 8 | 4 | 3 | 2 | 1 | 0 | 0 | 0 | 0 | 0 |
| Bladder | 14 | 9 | 6 | 4 | 2 | 2 | 2 | 0 | 0 | 0 | 0 | 0 |
| Other | 24 | 14 | 10 | 4 | 3 | 3 | 2 | 1 | 1 | 0 | 0 | 0 |
| BTC | 19 | 9 | 2 | 1 | 1 | 1 | 1 | 1 | 0 | 0 | 0 | 0 |
| Pancreatic | 20 | 9 | 5 | 4 | 3 | 2 | 2 | 2 | 0 | 0 | 0 | 0 |



| No. at risk | | 0 | 3 | 6 | 9 | 12 | 15 | 18 | 21 | 24 | 27 | 30 | 33 |
|-------------|-----|-----|-----|----|----|----|----|----|----|----|----|----|----|
| IHC 2+ | 151 | 136 | 105 | 88 | 73 | 49 | 35 | 26 | 13 | 3 | 1 | 0 | 0 |
| IHC 3+ | 111 | 98 | 84 | 74 | 67 | 58 | 51 | 39 | 21 | 7 | 3 | 0 | 0 |



| No. at risk | | 0 | 3 | 6 | 9 | 12 | 15 | 18 | 21 | 24 | 27 | 30 | 33 |
|-------------|----|----|----|----|----|----|----|----|----|----|----|----|----|
| Endometrial | 16 | 14 | 12 | 12 | 12 | 11 | 11 | 9 | 4 | 0 | 0 | 0 | 0 |
| Cervical | 10 | 10 | 9 | 9 | 7 | 6 | 6 | 4 | 3 | 2 | 1 | 0 | 0 |
| Ovarian | 15 | 15 | 13 | 12 | 11 | 10 | 8 | 6 | 5 | 2 | 1 | 0 | 0 |
| Bladder | 27 | 23 | 19 | 17 | 14 | 9 | 8 | 6 | 1 | 0 | 0 | 0 | 0 |
| Other | 16 | 15 | 14 | 13 | 12 | 12 | 12 | 9 | 6 | 2 | 1 | 0 | 0 |
| BTC | 22 | 17 | 13 | 9 | 9 | 8 | 6 | 5 | 2 | 1 | 0 | 0 | 0 |
| Pancreatic | 5 | 4 | 4 | 2 | 2 | 2 | 0 | 0 | 0 | 0 | 0 | 0 | 0 |



No. at risk

| | | | | | | | | | | | | |
|-------------|----|----|----|----|----|----|----|----|---|---|---|---|
| Endometrial | 24 | 22 | 21 | 16 | 15 | 13 | 12 | 10 | 5 | 1 | 1 | 0 |
| Cervical | 25 | 22 | 18 | 17 | 11 | 4 | 3 | 0 | 0 | 0 | 0 | 0 |
| Ovarian | 25 | 23 | 17 | 13 | 11 | 7 | 5 | 5 | 3 | 1 | 0 | 0 |
| Bladder | 14 | 14 | 12 | 11 | 11 | 6 | 4 | 3 | 1 | 0 | 0 | 0 |
| Other | 24 | 24 | 21 | 17 | 15 | 11 | 7 | 4 | 1 | 0 | 0 | 0 |
| BTC | 19 | 15 | 8 | 6 | 3 | 3 | 2 | 2 | 2 | 0 | 0 | 0 |
| Pancreatic | 20 | 16 | 8 | 8 | 7 | 5 | 2 | 2 | 1 | 1 | 0 | 0 |