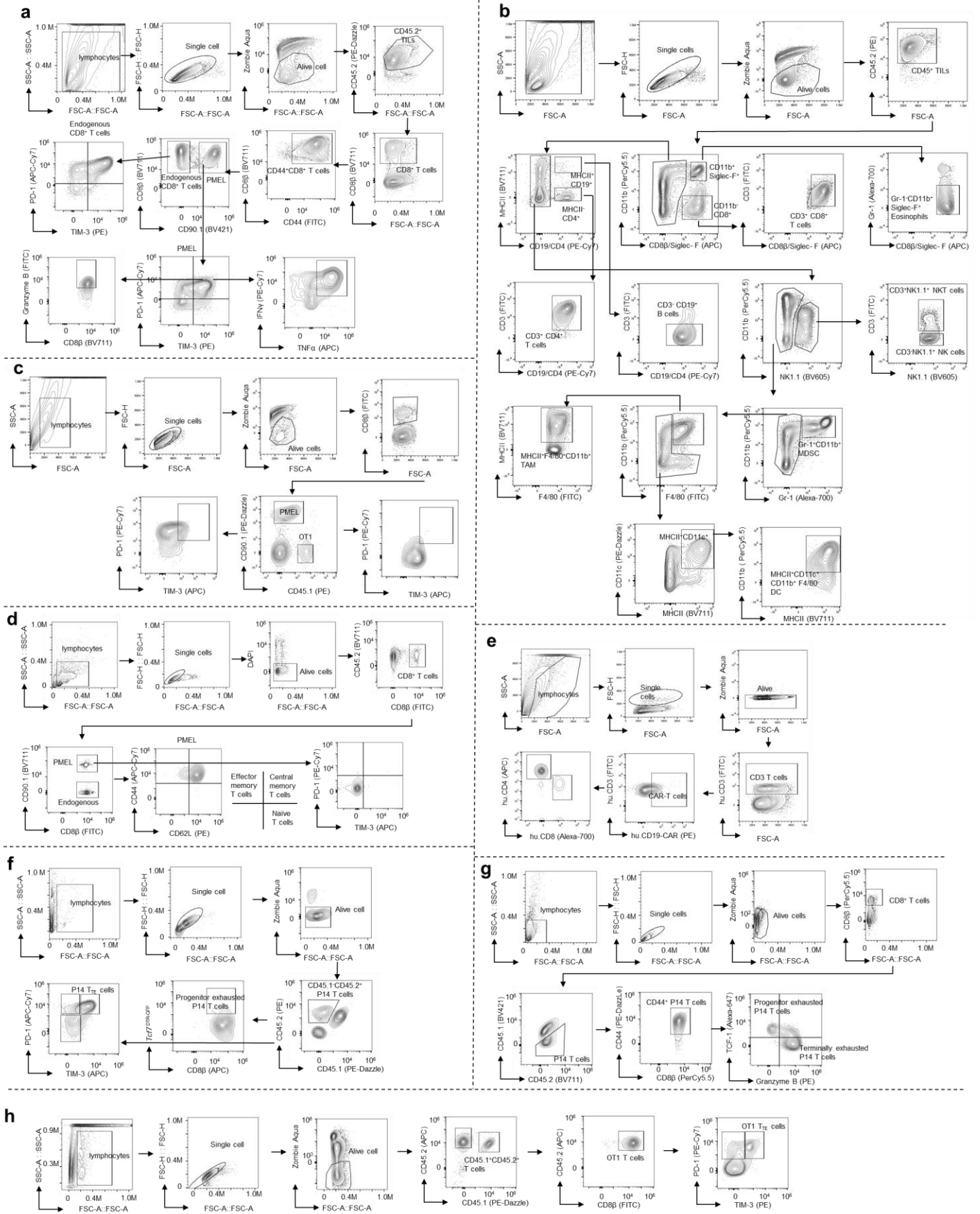

Supplementary information

The type 2 cytokine Fc–IL-4 revitalizes exhausted CD8⁺ T cells against cancer

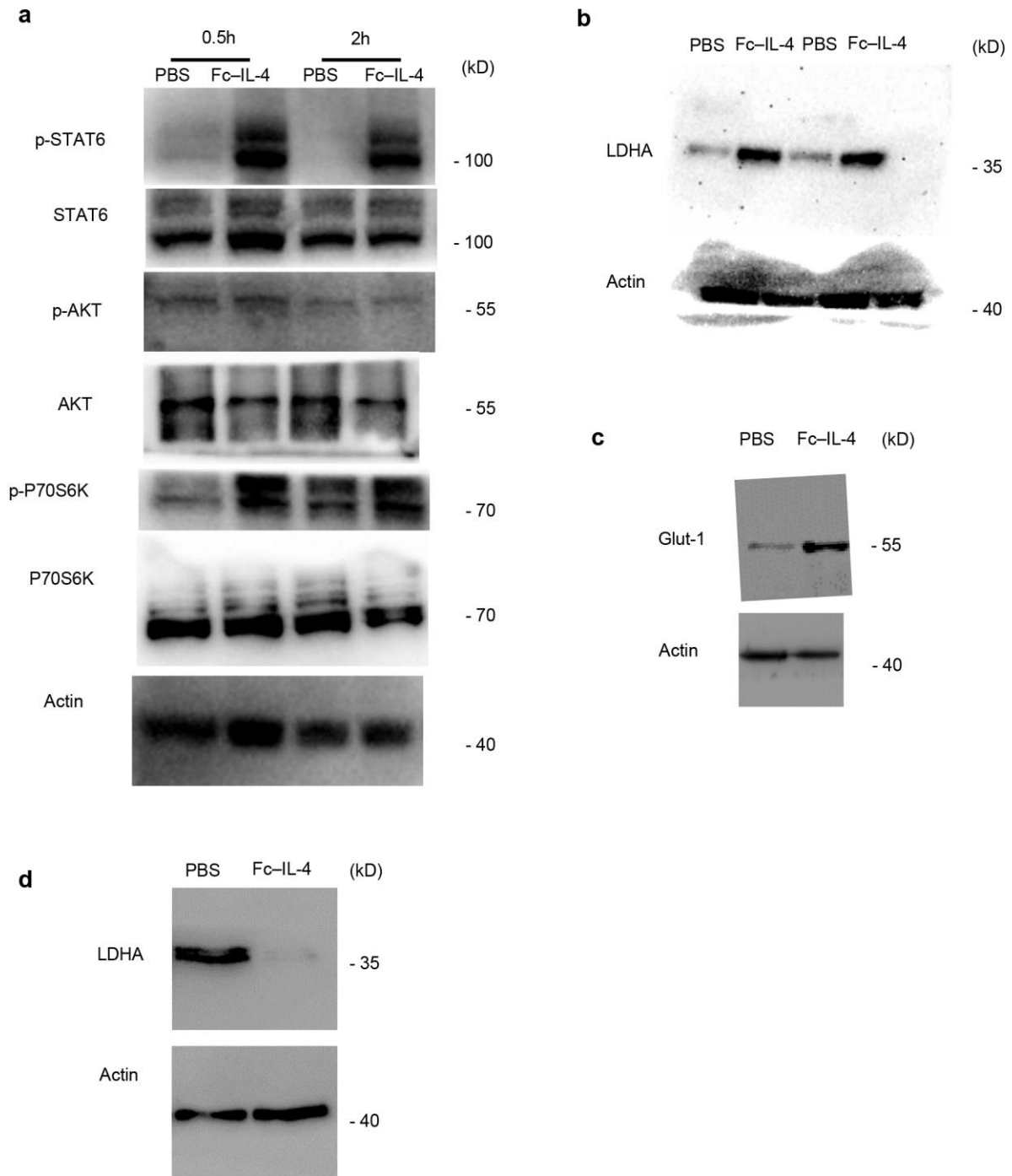
In the format provided by the authors and unedited



Supplemental Fig. 1 | Flow cytometry gating strategies.

a, Representative flow cytometry gating strategies related to Fig.1b-f, Fig. 3c&d, Fig. 3h&i, Fig. 5g&h, and Extended Data Fig. 2b&c, 2i-k, Fig. 6j&k, Fig. 6p. **b**, Representative flow cytometry gating strategies related to Extended Data Fig.1g. **c**, Representative flow cytometry gating strategies related to Extended Data Fig.2e-g. **d**, Representative flow cytometry gating strategies related to Extended Data Fig.4n. **e**, Representative flow cytometry gating strategies related to Extended Data Fig. 5l. **f**, Representative flow cytometry gating

strategies related to Fig. 3b. **g**, Representative flow cytometry gating strategies related to Extended Data Fig. 6e. **h**, Representative flow cytometry gating strategies related to Fig. 3g and Fig. 5f.



Supplemental Fig. 2 | Full scans of Western Blot.

Full scans of Western Blot of Fig. 4m (a), Fig. 5b (b), Extended Data Fig. 7b (c), and Extended Data Fig. 10n (d).