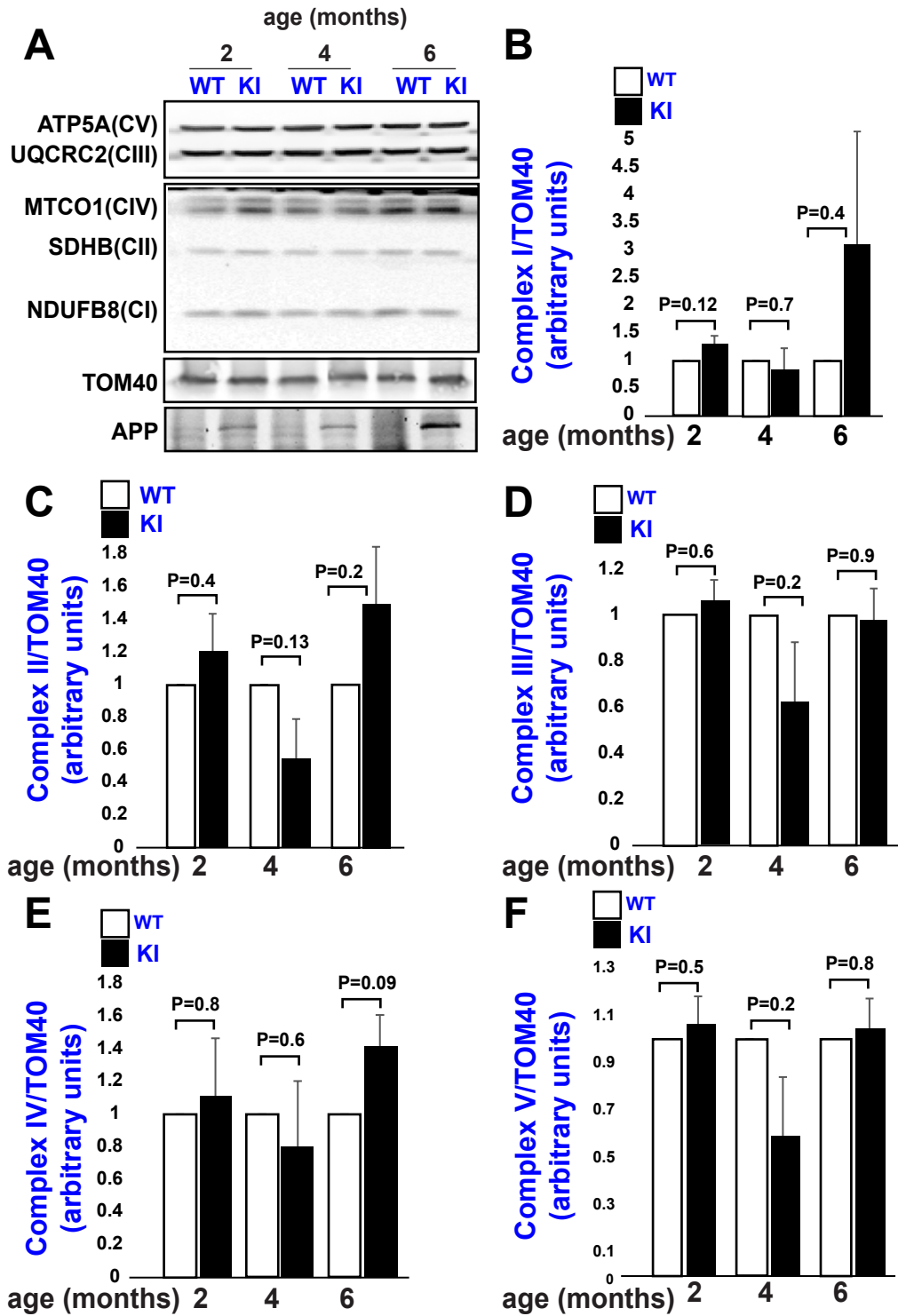


Supplemental Figure 1

Norambuena et al.



Supplemental Figure 1. WT and APP^{SAA} mice cortex express similar levels of electron transport chain (ETC) subunits in the cortex.

A, Cortical protein samples were separated by SDS-PAGE followed by western blots of the indicated proteins. The blots shown are representative of 3 independent experiments. B-F, The expression levels of each of the indicated subunits of the electron transport chain (CI-CV, or Complex I-V) were normalized to expression of TOM40 (mitochondrial marker) detected on each sample. Bar graphs show the quantification obtained using 3 mice/group/genetic background and analyzed using Student's two-tailed unpaired t-test.