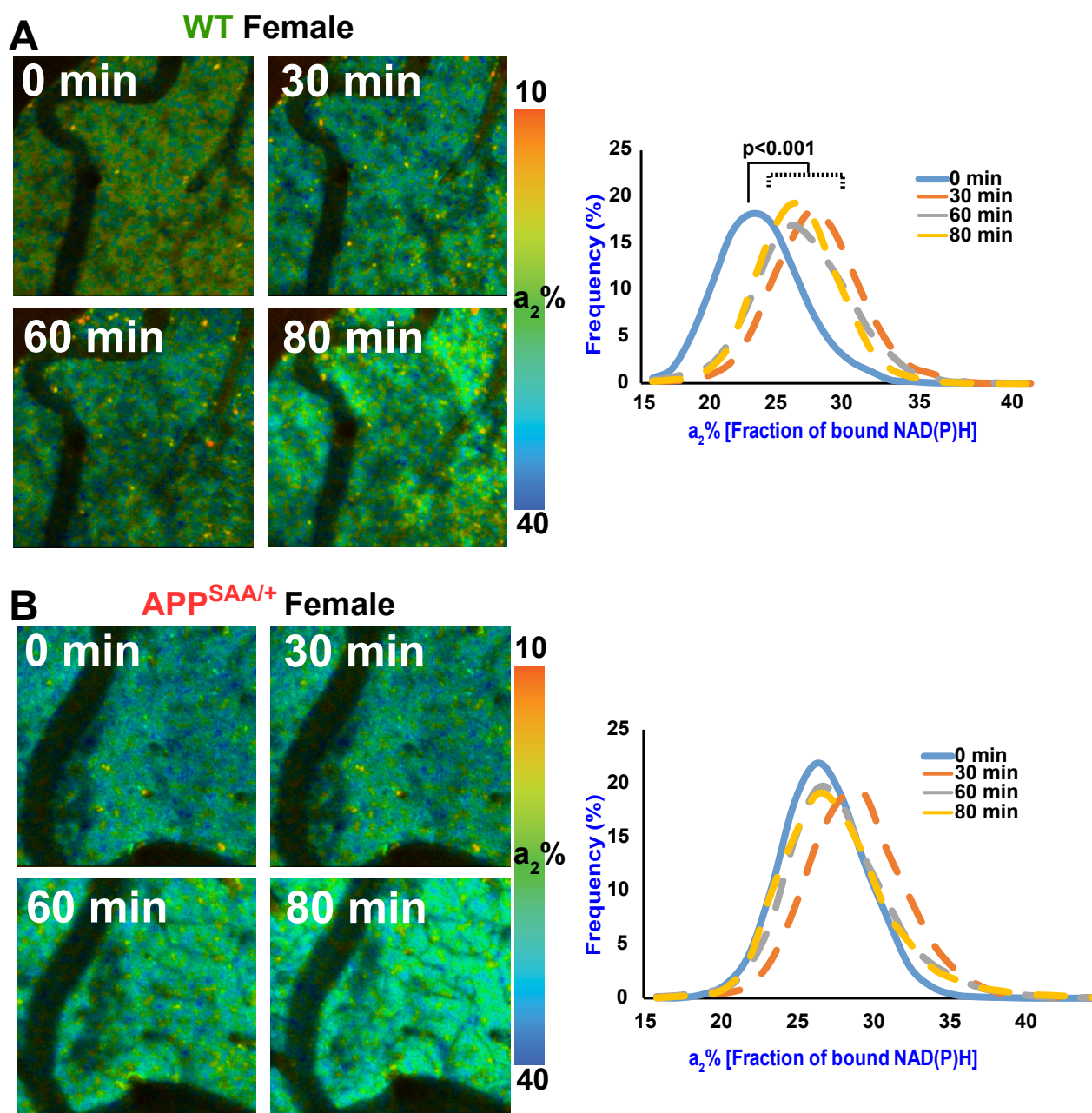


Supplemental Figure 2 Norambuena et al.



Supplemental Figure 2. NiMA is also disrupted in female APPSAA/+ brain.

A, 2P-FLIM imaging of WT female cerebral cortex through an open-skull window before and after topical application of amino acids (R+L). An increase in $a_2\%$ was observed for several minutes indicating upregulation of mitochondrial activity. Statistical analyses were performed using Student's two-tailed paired t-test. 3 females were used in these experiments. B- A similar experiment was performed using a female APPSAA/+ mouse cerebral cortex. Like we observed in males, NiMA is also blocked in the 4-month-old females. Graphs show the quantification of 3 independent experiments. Statistical analyses were performed using Student's two-tailed paired t-test. Comparisons between time 0 and 30, 60 and 80 minutes in histograms resulted in p values >0.05 .