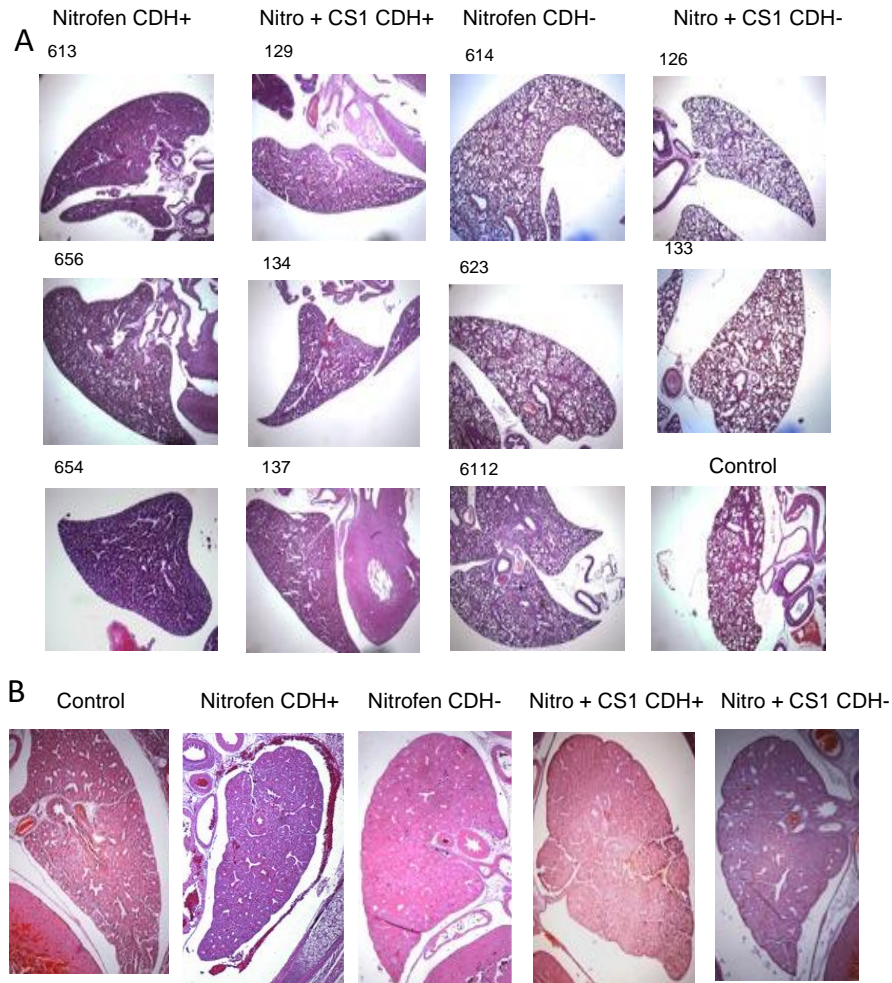


**Table S1 Rat RT-PCR primers**

<b>Rat primers</b>	<b>Forward</b>	<b>Reverse</b>
<i>Rara</i>	TTGGAATGGCTCAAACCAC	AGGGCTGGGCACTATCTCTT
<i>Rarb</i>	ATCGATGCCACCTCTCATTC	GGGGTCAAGGGTTCATGTC
<i>Pparg</i>	CCCAATGGTTGCTGATTACA	GGACGCAGGCTCTACTTTGA
<i>Ccl2</i>	AGCATCCACGTGCTGTCTC	GATCATCTTGCCAGTGAATGAG
<i>Stra6</i>	CTCTGGTCTTGTCCTGCTCA	TGCTTTAAGATTGGCCCTGT
<i>Zfp2 (Fog2)</i>	GTATTTTCTTTCGCCGATGC	TTGCATTTAACAGCCAAGGTT
<i>Nr2f2</i>	CCTCAAGGCCATAGTCCTGT	CTTCCACGTGGGCTACATC
<i>Aldh1a2</i>	TCTCATGGTGTCCTCTGCAA	TCTGAGCATTTAAGGCGTTG
<i>Wt1</i>	GAACCTCGGAGCTACCTTGA	TCTGCCCTTCTGTCCATTTC
<i>Rbp1</i>	AGGCATAGATGACCGCAAGT	CACTGAAGCTTGTCACCATCC
<i>Slit3</i>	GCTGGTGTATGACAGCCTGA	CCAGGTTCAAGGTCTGGTT
<i>Gadph</i>	TCAAGAAGGTGGTGAAGCAG	AGGTGGAAGAATGGGAGTTG
<i>Ifng</i>	TTTTGCAGCTCTGCCTCAT	AGCATCCATGCTACTTGAGTTAAA
<i>Il12a</i>	CAGGCCATAAATGCAGCAC	CCGCTGTGATTCAGAGACC
<i>Il10</i>	AGTGGAGCAGGTGAAGAATGA	TCATGGCCTTGTAGACACCTT
<i>Arg1</i>	CCGCAGCATTAAAGGAAAGC	CCCGTGGTCTCTCACATTG
<i>Foxp3</i>	GTACAGCCGGACACACTGC	GCTGACTTCCAAGTCTCGTGT
<i>Il17a</i>	CTTCACCCTGGACTCTGAGC	CCTCAGCGTTGACACAGC
<i>mRPL13A</i>	TCCCTCCACCCTATGACAA	GCCCCAGGTAAGCAAACCTT

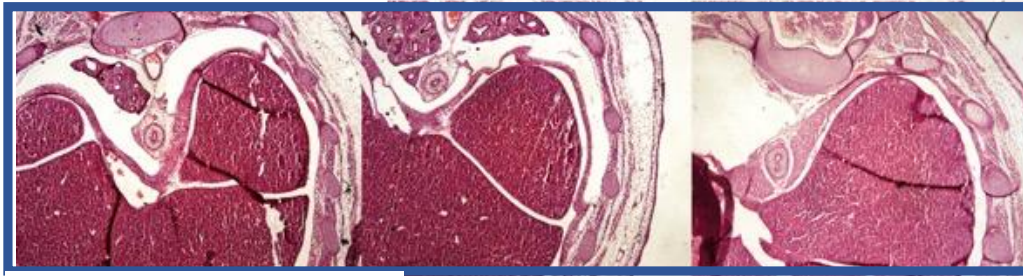
**Table S2 Mouse RT-PCR primers**

<b>Mouse primers</b>	<b>Forward</b>	<b>Reverse</b>
<i>Arg1</i>	AGAGATTATCGGAGCGCCTT	TTTTTCCAGCAGACCAGCTT
<i>Aldh1a2</i>	ATCGCTTCTCACATCGGCAT	ACAGCGTAGTCCAAGTCAGC
<i>Rbp1</i>	ATAGACGACCGCAAGTGCAT	CTCAGCTCTCATTTCAGGTGA
<i>Ccl2</i>	AGTCTCTGCCGCCCTTCT	GTGACTGGGGCATTGATTG
<i>Il12</i>	TGGTTGCCATCGTTTTCTG	ACAGGTGAGGTTCACTGTTTCT
<i>Slit3</i>	GCCACAAGGATGGGTCA	AGTCATCTGGGTTGATCTCACA

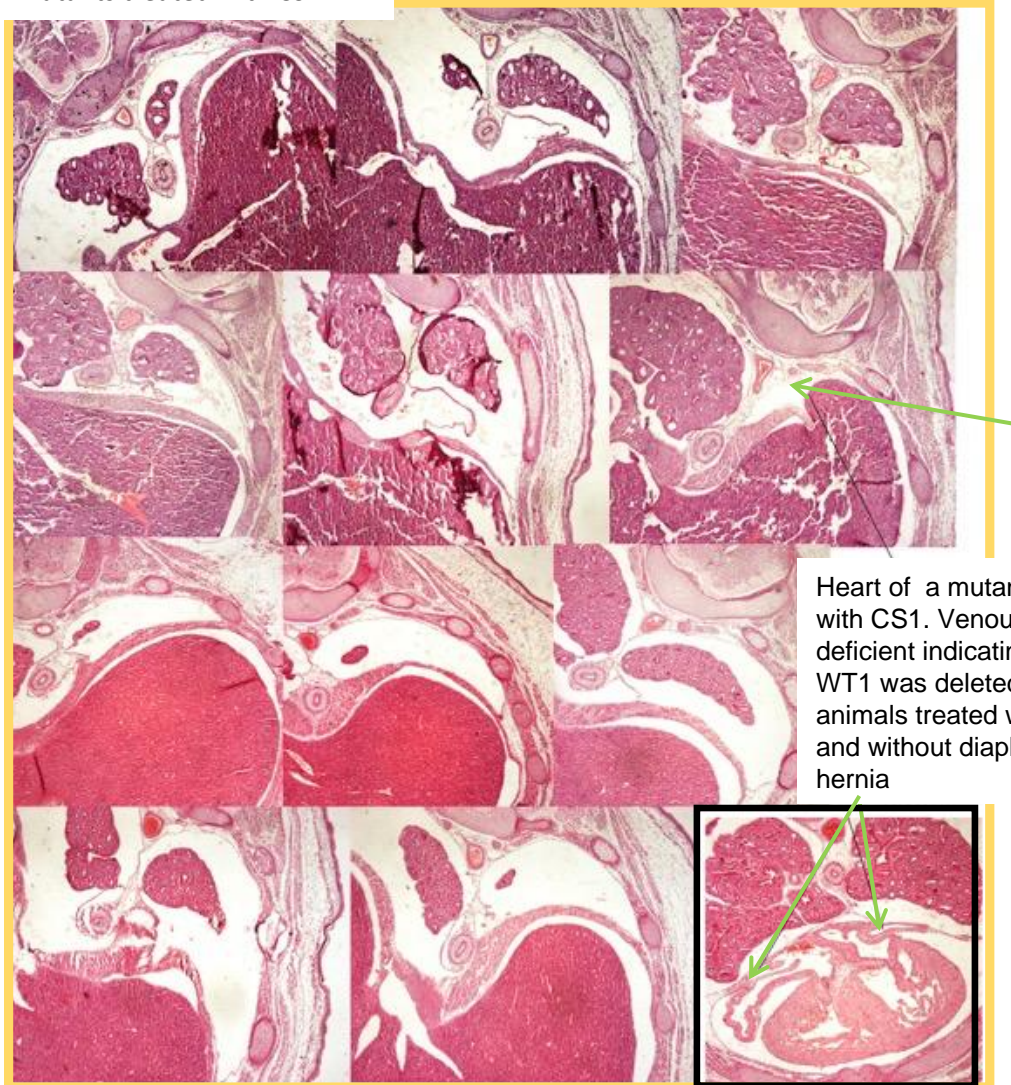


**Figure S1. Effect of TLR ligand in the alterations in lung development induced by nitrofen.** Pregnant Wistar rat females were treated with nitrofen at E9.5 and 3 days later injected intraperitoneally with 100  $\mu\text{g}/\text{Kg}$  CS1 . A) Hematoxylin-eosin images of E21 lungs of 3 different fetuses from the different groups. B) A representative image from each group at E18.

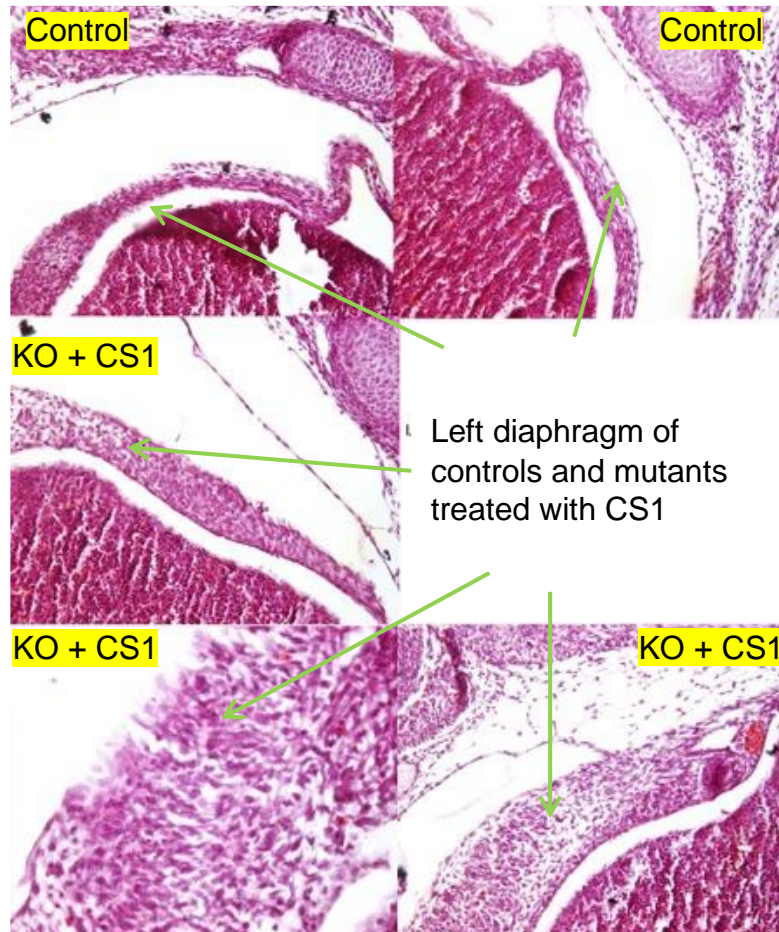
Controls



Mutants treated with CS1



**Figure S2 Effect of CS1 TLR ligand in diaphragmatic hernia of G2-GATA4<sup>Cre</sup>;Wt1<sup>fl/fl</sup> mice .** Pregnant mice mothers were treated with CS1 or PBS intraperitoneally twice at E9.5 and E10.5. Embryos were analysed at E15.5 . Images of the diaphragm from the 11 WT1 mutant embryos of mothers treated CS1 obtained. The heart images of a Nitro+CS1 mutant CDH- is also shown. Embryos (3) from control mothers are also shown.



**Figure S3 Effect of CS1 TLR ligand in diaphragmatic hernia of  $G2-GATA4^{Cre};Wt1^{fl/fl}$  mice.** Pregnant mice mothers were treated with CS1 or PBS intraperitoneally twice at E9.5 and E10.5. Embryos were analysed at E15.5. Representative images of the diaphragm from WT1 mutant embryos of mothers treated CS1 (3) and from control CS1 treated (2) mothers are shown