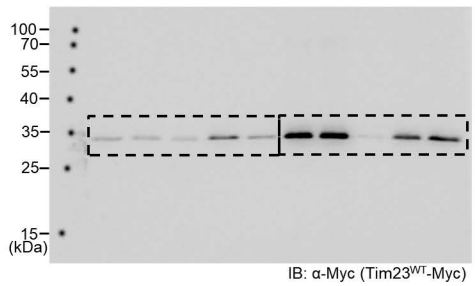
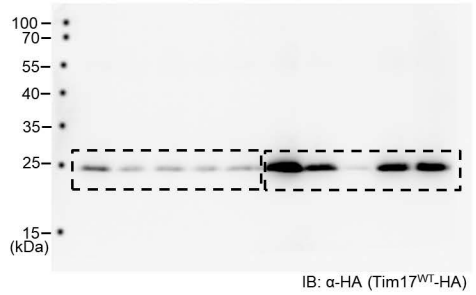
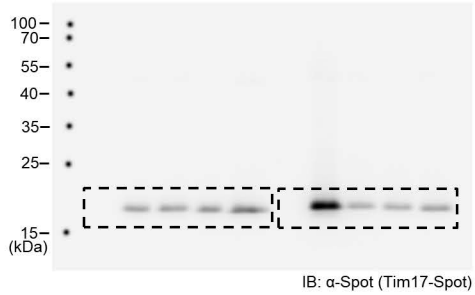
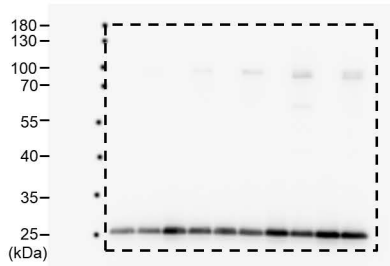


Fig. 2h

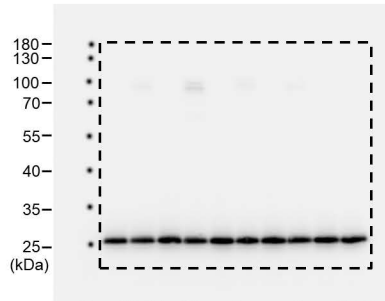


The Spot and HA blots in Fig. 2h are from the same membrane. The Myc blot is from a separate gel loaded with the same volume of the identical samples.

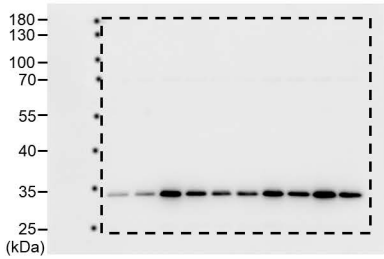
Fig. 3c



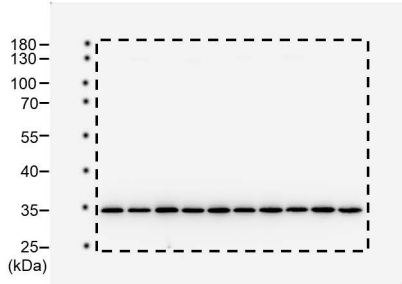
IB: α -HA (Tim17), for Bpa positions 6-37



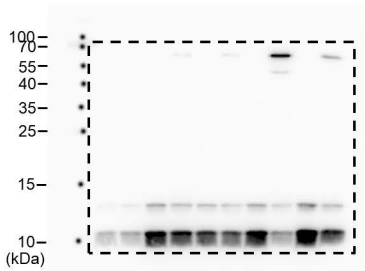
IB: α -HA (Tim17), for Bpa positions 43-73



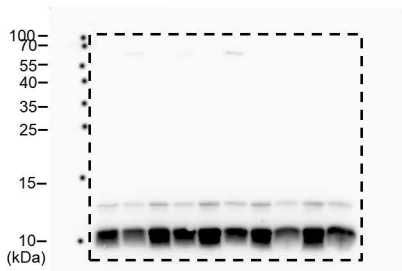
IB: α -Myc (Tim23), for Bpa positions 6-37



IB: α -Myc (Tim23), for Bpa positions 43-73



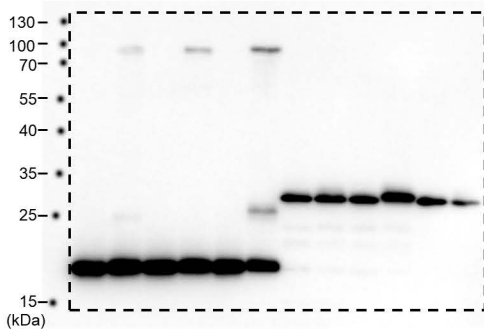
IB: α -Strep (Mgr2), for Bpa positions 6-37



IB: α -Strep (Mgr2), for Bpa positions 43-73

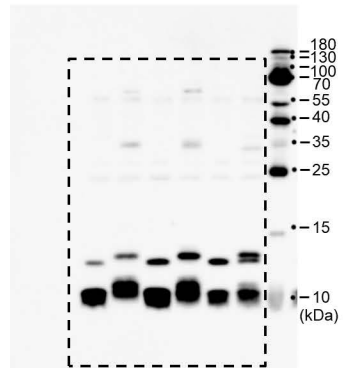
The HA and Myc blots in Fig. 3c are from the same membranes. The Strep blots are from separate gels loaded with the same volume of the identical samples used in the HA/Myc blots.

Fig. 3d



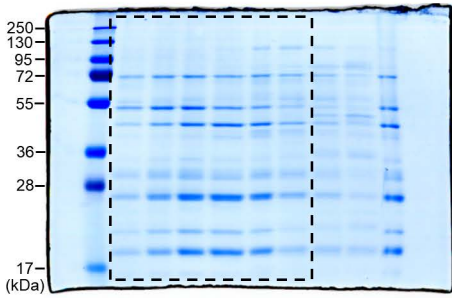
IP: Substrate (ALFA-tag)
IB: Spot-tag

Fig. 3e

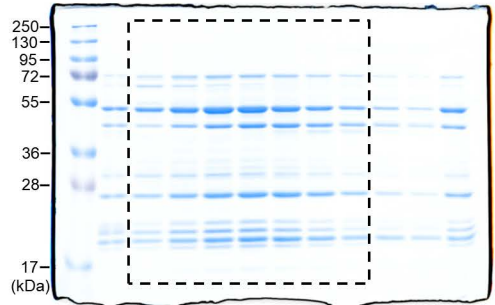


IB: α -Strep (Mgr2)

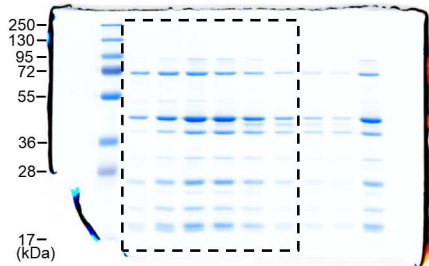
Extended Data Fig. 1b



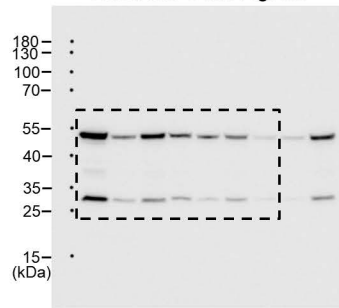
Extended Data Fig. 1c



Extended Data Fig. 2a

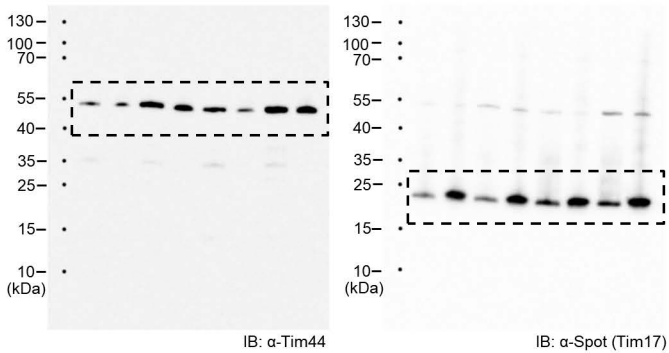


Extended Data Fig. 3a



IB: α -Tim44

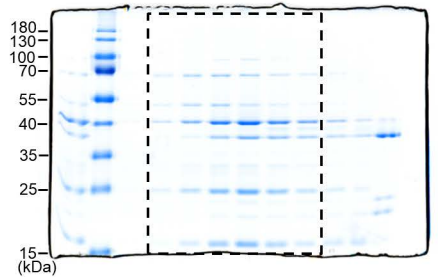
Extended Data Fig. 3c



IB: α -Tim44

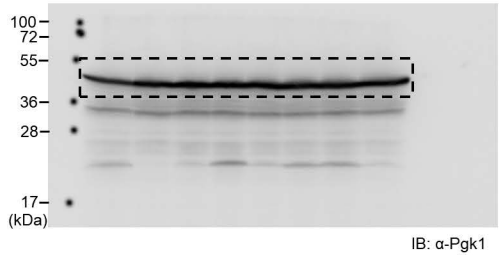
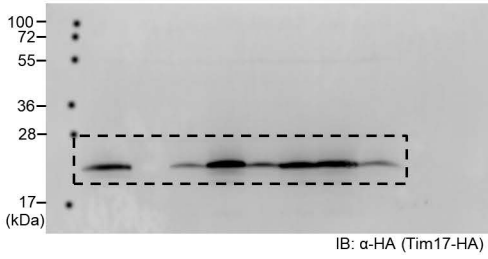
IB: α -Spot (Tim17)

Extended Data Fig. 3d

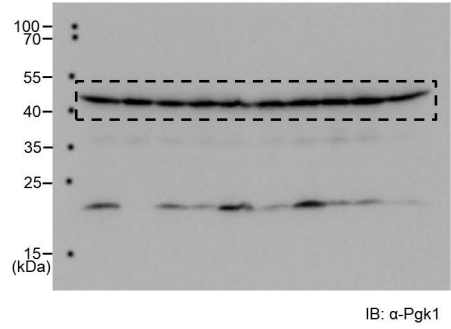
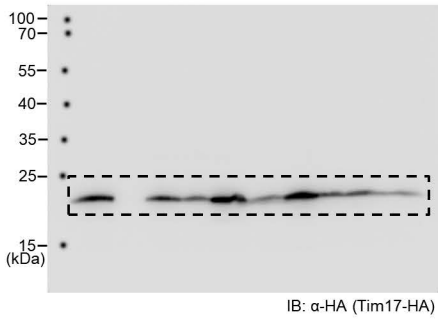


The Tim44 and Spot blots in Extended Data Fig. 3c are from the same membrane.

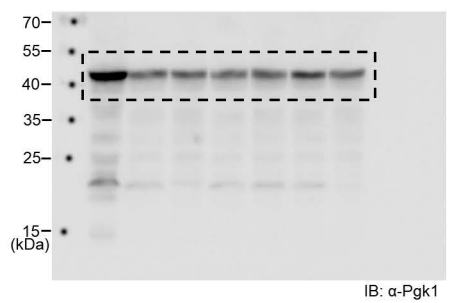
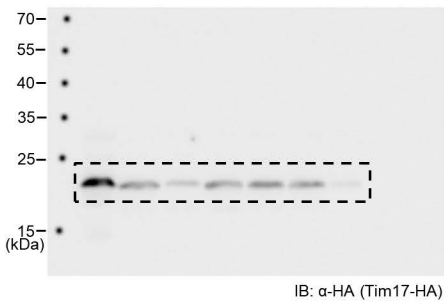
Extended Data Fig. 6b



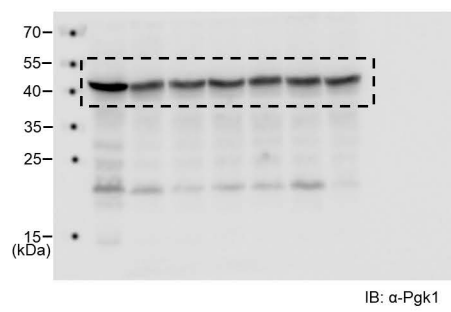
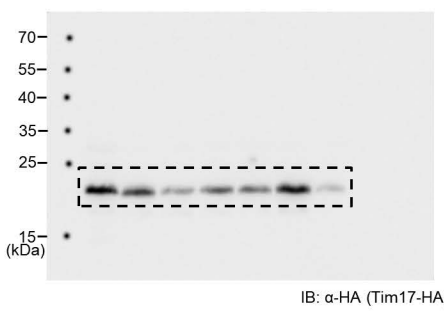
Extended Data Fig. 6c



Extended Data Fig. 6e

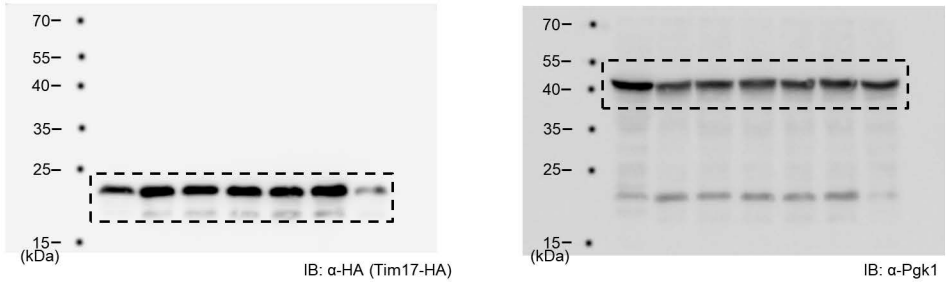


Extended Data Fig. 6f



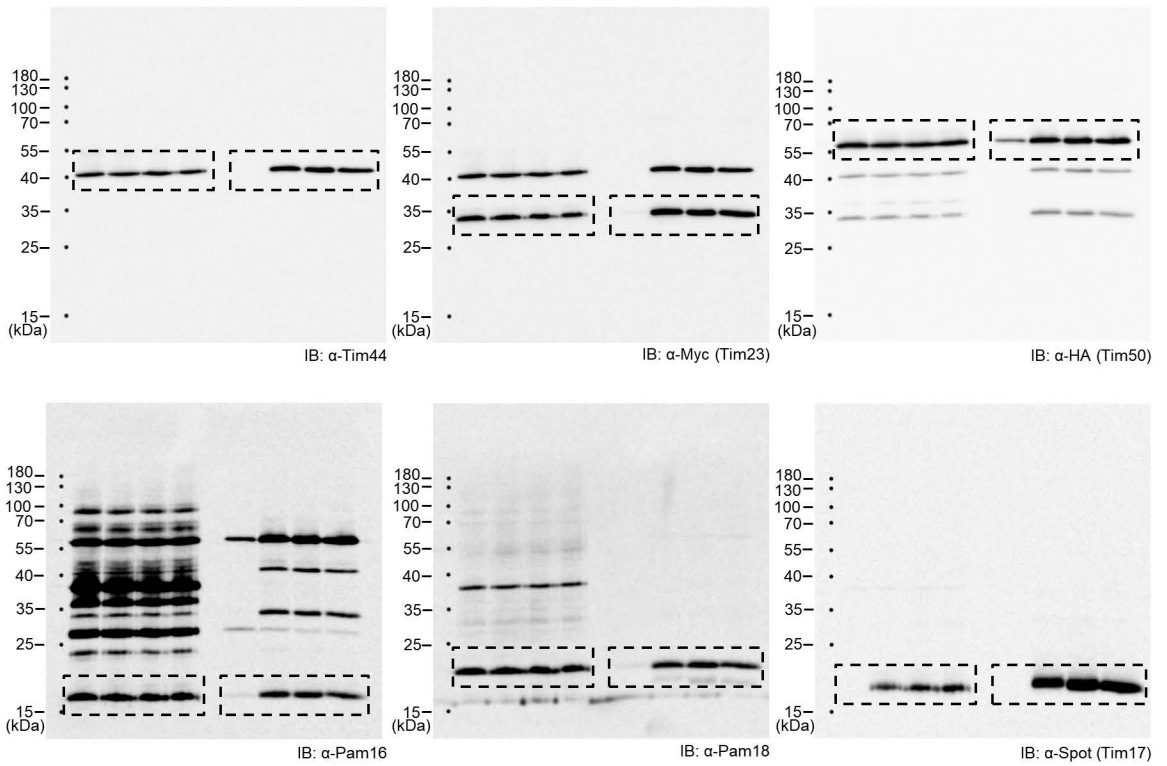
In each panel of Extended Data Fig. 6 b, c, e, and f, the HA and Pgk1 blots are from the same membrane.

Extended Data Fig. 6g

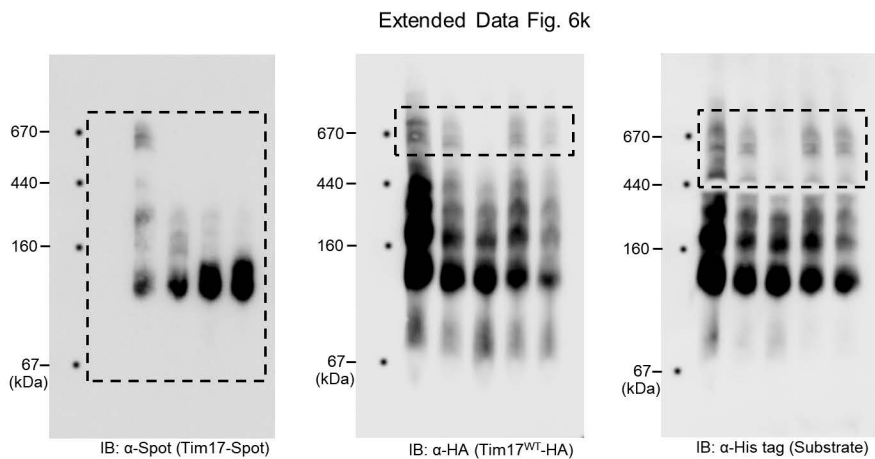
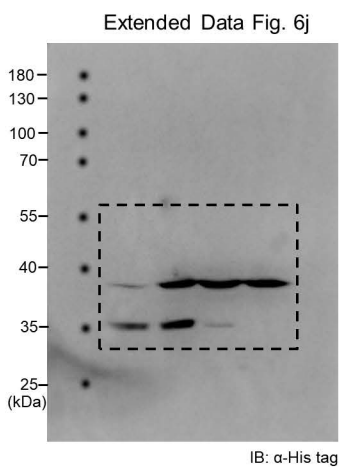
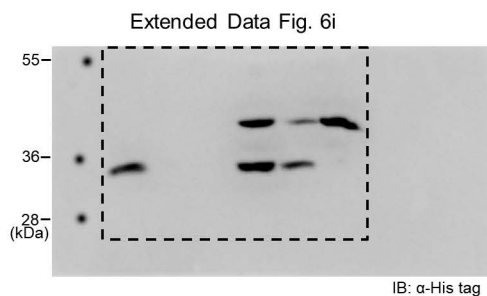


The HA and Pgk1 blots in Extended Data Fig. 6g are from the same membrane.

Extended Data Fig. 6h

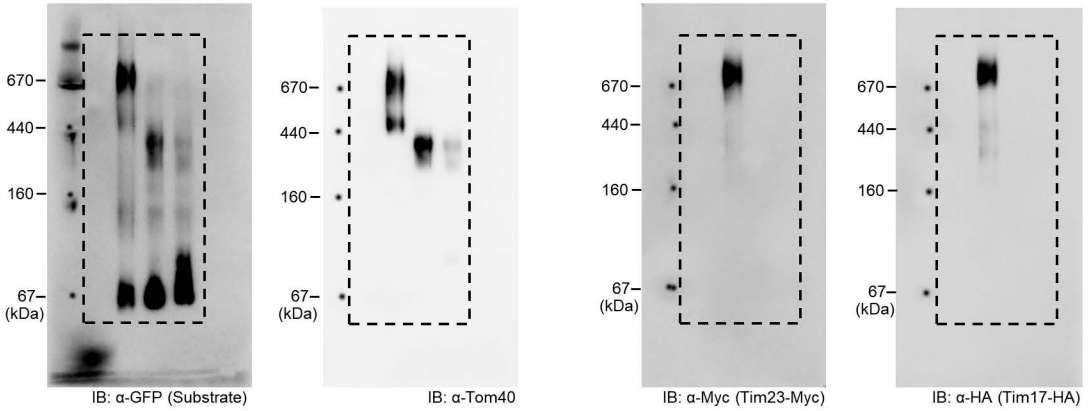


All blots in Extended Data Fig. 6h are from the same membrane.



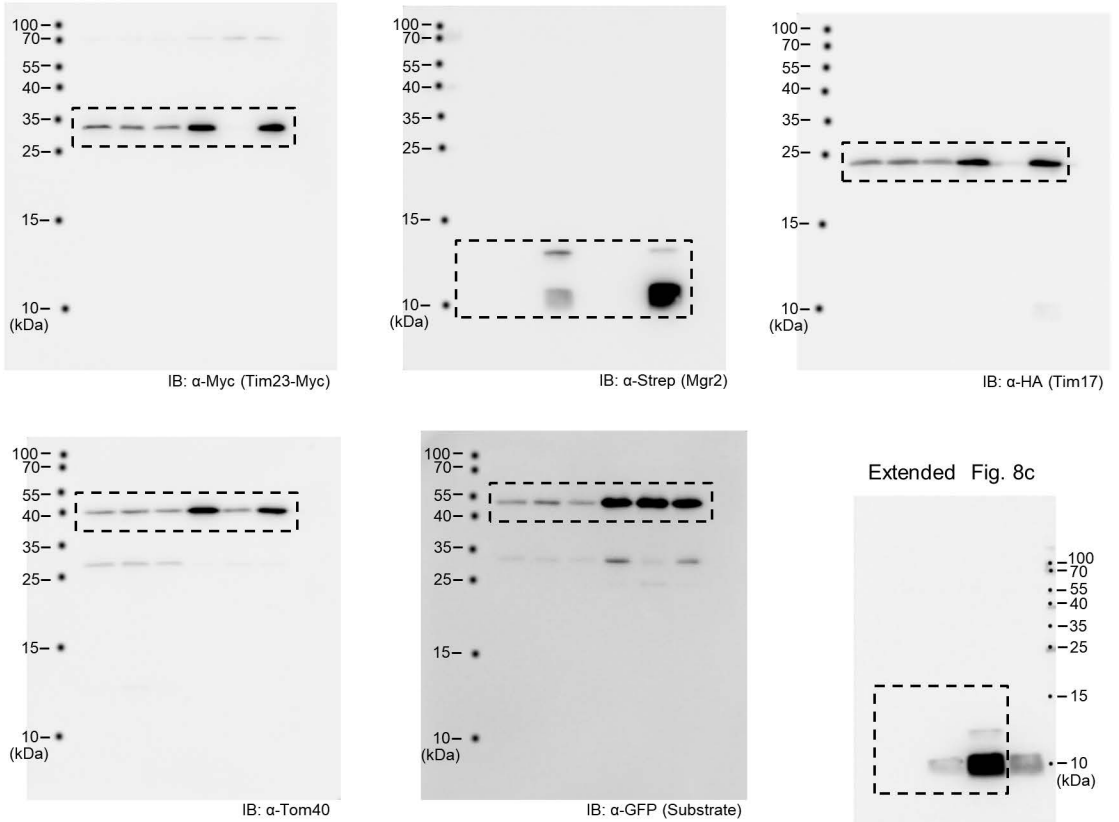
The Spot and HA blots in Extended Data Fig. 6k are from the same membrane. The His blot is from a separate gel loaded with the same volumes of the identical samples from the Spot/HA blots.

Extended Data Fig. 8a



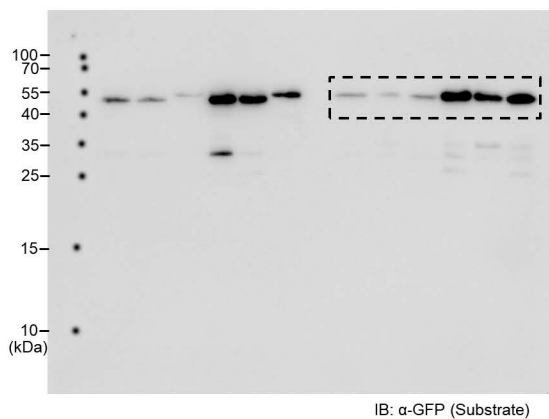
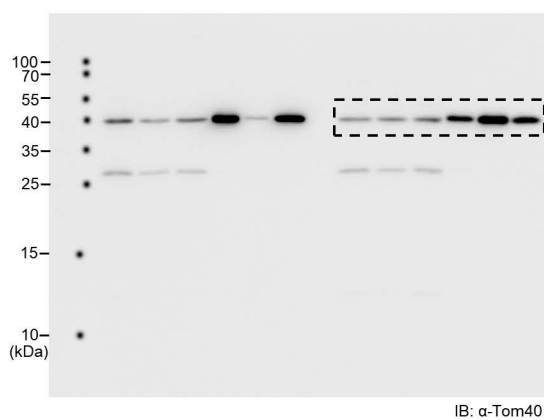
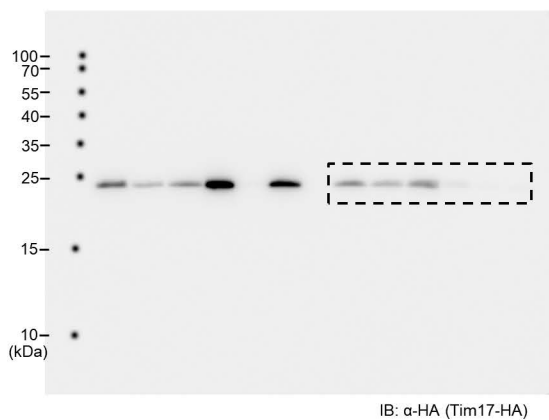
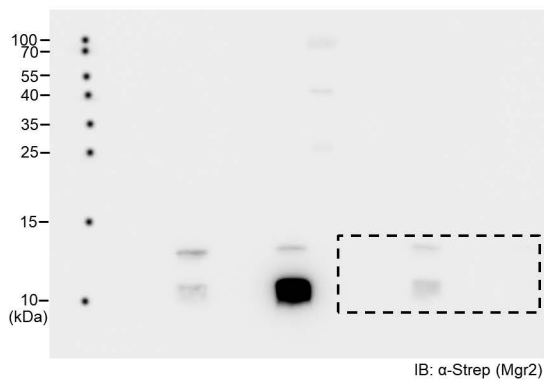
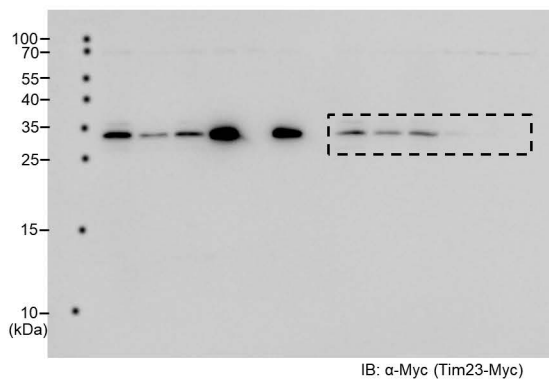
The GFP and Tom40 blots in the Extended Data Fig. 8a are from the same gel/membrane. The Myc and HA blots are from a separate membrane. The two membranes are from gels loaded with the same volumes of the identical samples.

Extended Fig. 8d (Left panels)



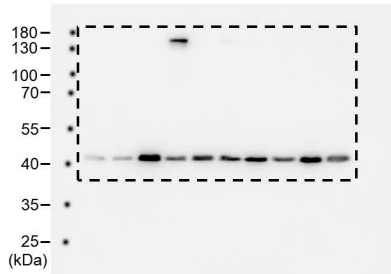
The Myc and Tom40 blots in the left panels of Extended Data Fig 8d are from the same membrane. The Strep, HA, and GFP blots are from another same membrane. Both membranes are from gels loaded with the same volumes of the identical samples.

Extended Data Fig. 8d (Right panels)

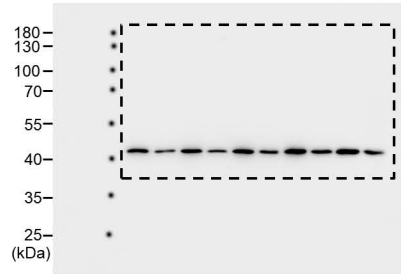


In right panels of Extended Data Fig. 8d, the Myc/Tom40 blots from the same membrane, and the Strep/HA/GFP blots are from another membrane. The two membranes are from gels loaded with the same volumes of the identical samples.

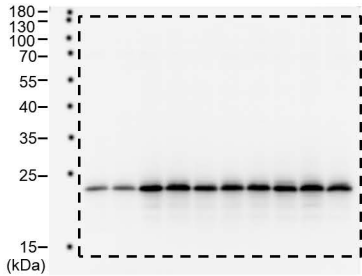
Extended Data Fig. 8e



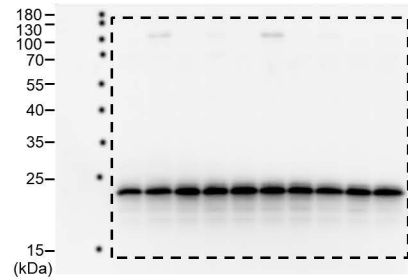
IB: α -Tim44, for Bpa positions 6-37



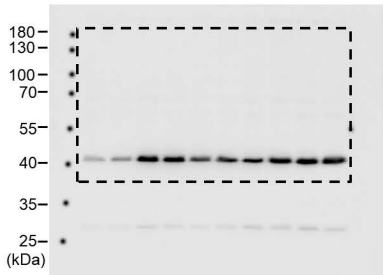
IB: α -Tim44, for Bpa positions 43-73



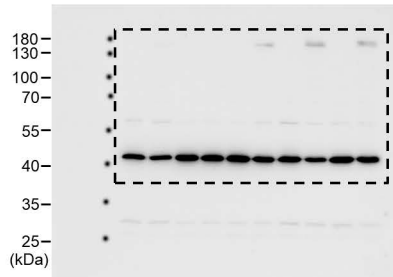
IB: α -Tom22, for Bpa positions 6-37



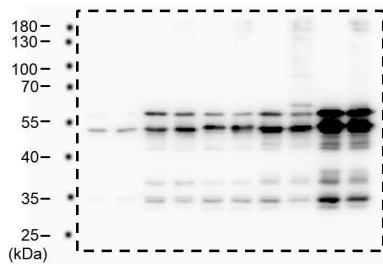
IB: α -Tom22, for Bpa positions 43-73



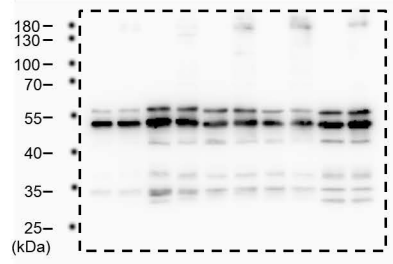
IB: α -Tom40, for Bpa positions 6-37



IB: α -Tom40, for Bpa positions 43-73



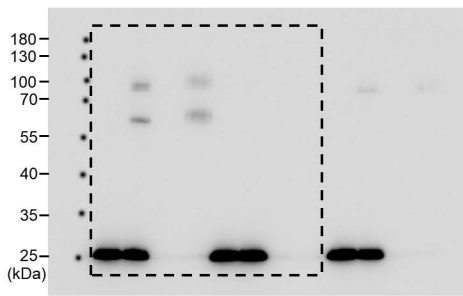
IB: α -GFP (Substrate), for Bpa positions 6-37



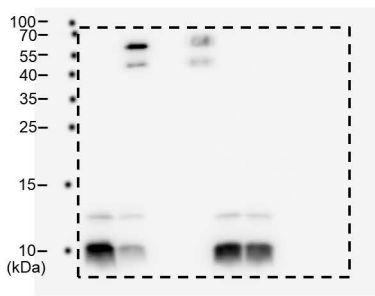
IB: α -GFP (Substrate), for Bpa positions 43-73)

The Tim44, Tom40, and GFP blots in Extended Data Fig. 8e are from the same membrane, and the Tom22 blot is from a separate membrane. For all blots in Fig. 3c and Extended Data Fig. 8e, gels were loaded with same volumes of the identical samples.

Extended Data Fig. 8f

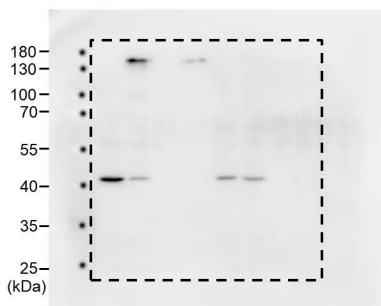


IP: Substrate (ALFA-tag)
IB: Tim17 (HA-tag)

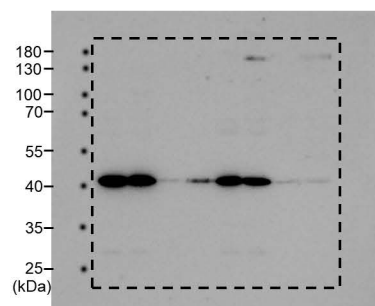


IP: Substrate (ALFA-tag)
IB: Mgr2 (Strep-tag)

The HA and Strep blots of Extended Data Fig. 8f are from two separate gels loaded with same volume of identical samples.



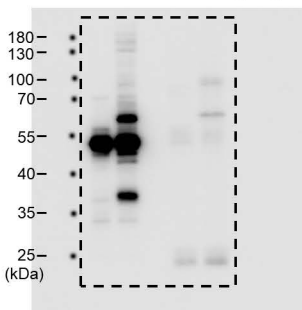
IP: Substrate (ALFA-tag)
IB: Tim44



IP: Substrate (ALFA-tag)
IB: Tom40

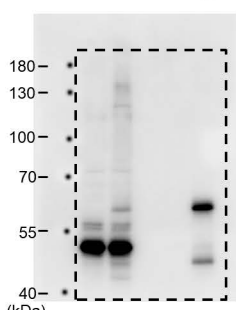
The Tim44 and Tom40 blots of the Extended Data Fig. 8f are from the same membrane.

Extended Data Fig. 8g



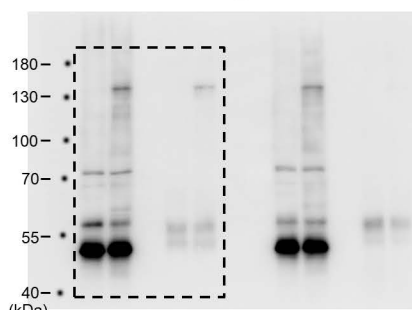
1st IP: Substrate (ALFA)
2nd IP: Tim17-HA
IB: Substrate (GFP)

Extended Data Fig. 8h



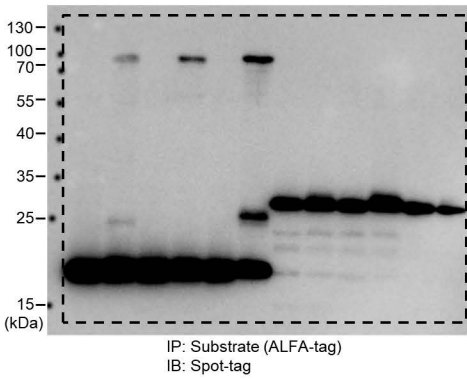
PD: Mgr2 (Strep-tag)
IB: Substrate (GFP)

Extended Data Fig. 8i

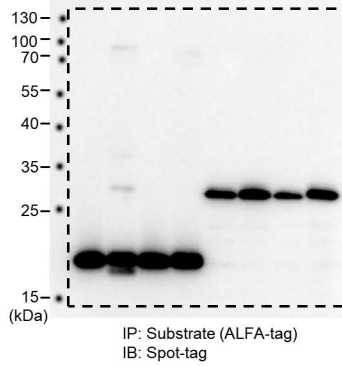
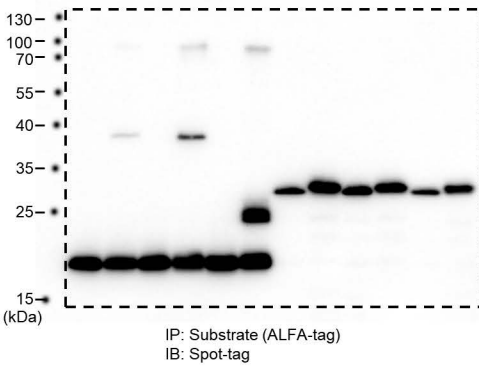


IP: Tim44
IB: Substrate (GFP)

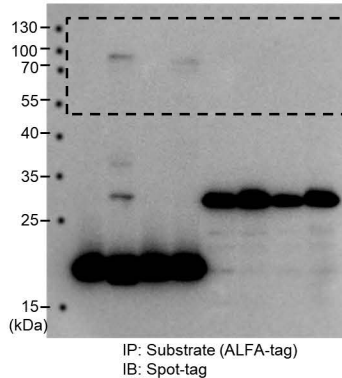
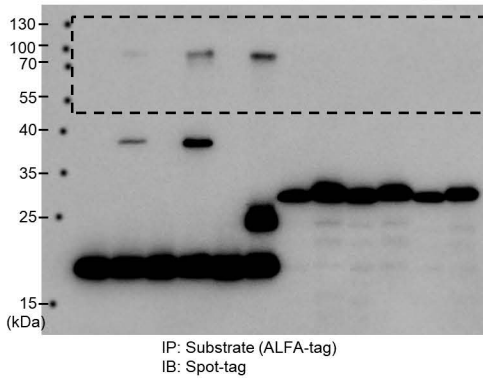
Extended Data Fig. 9a (contrast-enhanced image of Fig. 3e)



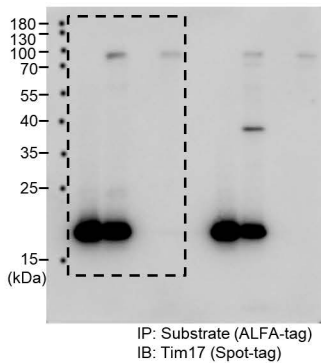
Extended Data Fig. 9b (top panels)



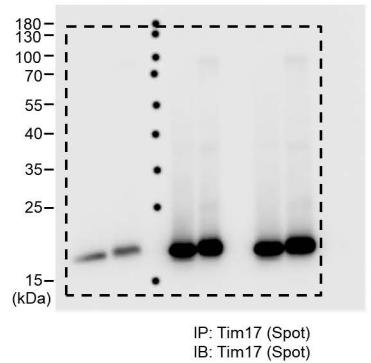
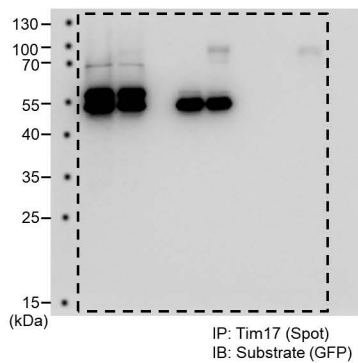
Extended Data Fig. 9b (bottom panels with enhanced contrast)



Extended Data Fig. 9c

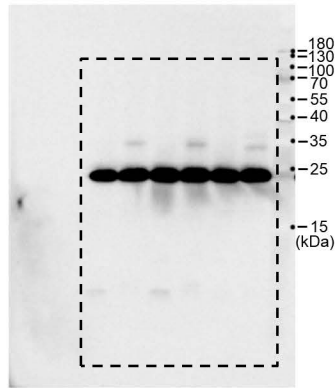


Extended Data Fig. 9d



The GFP and Spot blots of Extended Data Fig. 9d are from the same membrane.

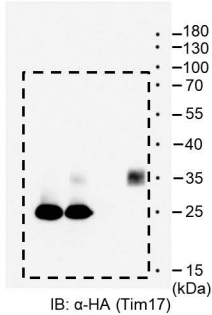
Extended Data Fig. 9e



IB: α -HA (Tim17)

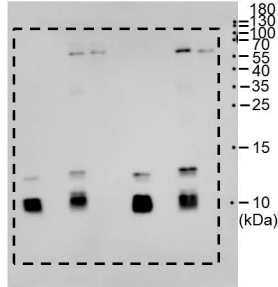
the HA blot in Extended Data Fig. 9e is from the same membrane used to generate the Strep blot of Fig. 3e.

Extended Fig. 9f



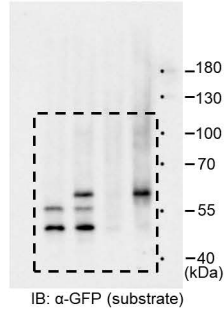
IB: α -HA (Tim17)

Extended Fig. 9g



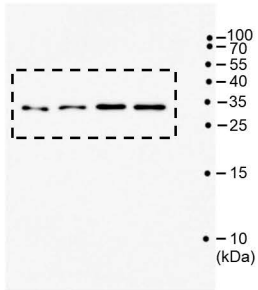
IB: α -Strep (Mgr2)

Extended Fig. 9h

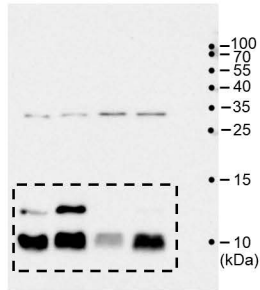


IB: α -GFP (substrate)

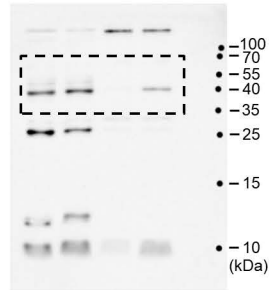
Extended Fig. 9j



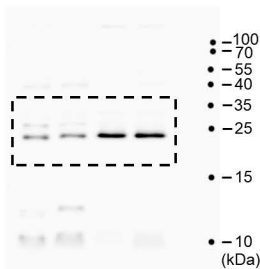
IB: α -Myc (Tim23)



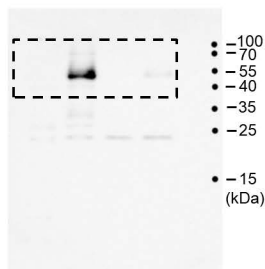
IB: α -Strep (Mgr2)



IB: Tom40



IB: α -HA (Tim17)



IB: α -GFP (substrate)

All blots in Extended Data Fig. 9j are from the same membrane.