

Supplementary Material to “Phylogenomic Analysis of *Dichrocephala benthamii* and Comparative Analysis within Tribe Astereae (Asteraceae)”

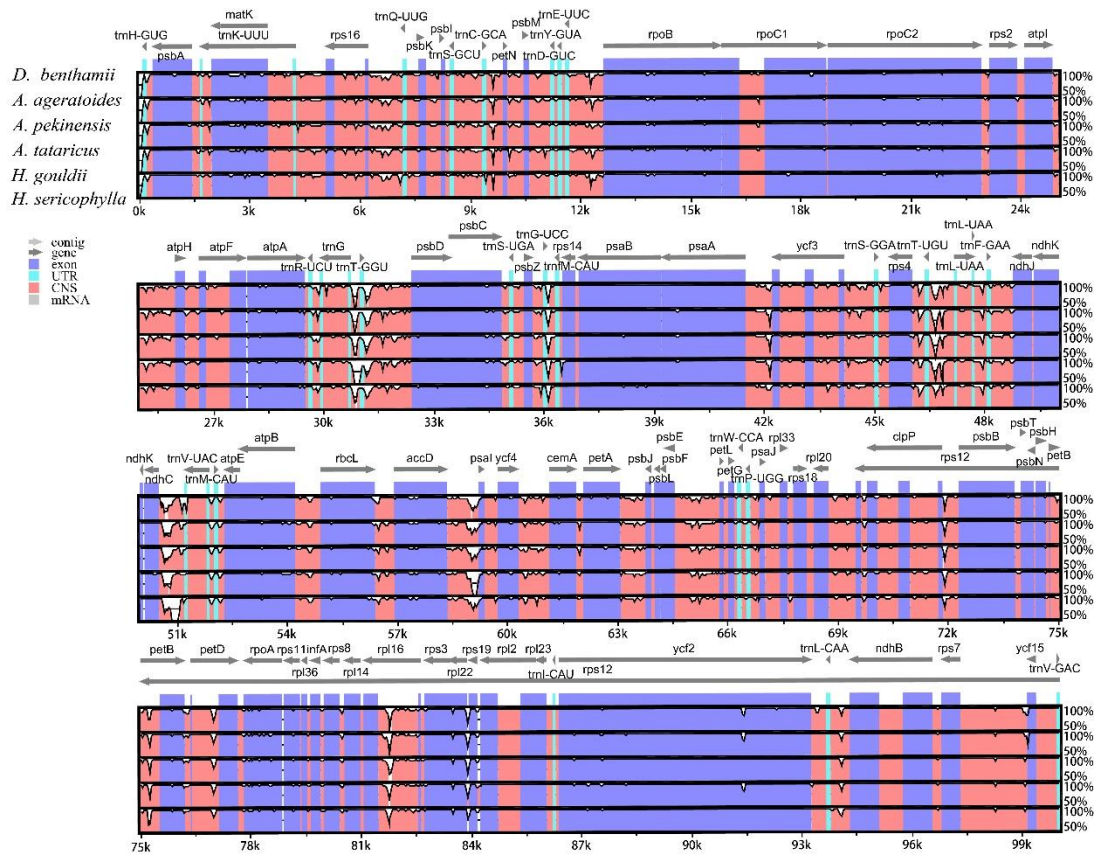


Figure S3 - The cp genomes of 6 species of Astereae were compared using the mVista program with *D. benthamii* as the reference. The arrow indicates the position and orientation of the gene. The Y -axis represents the percentage of identity among genome sequences (50%–100%).