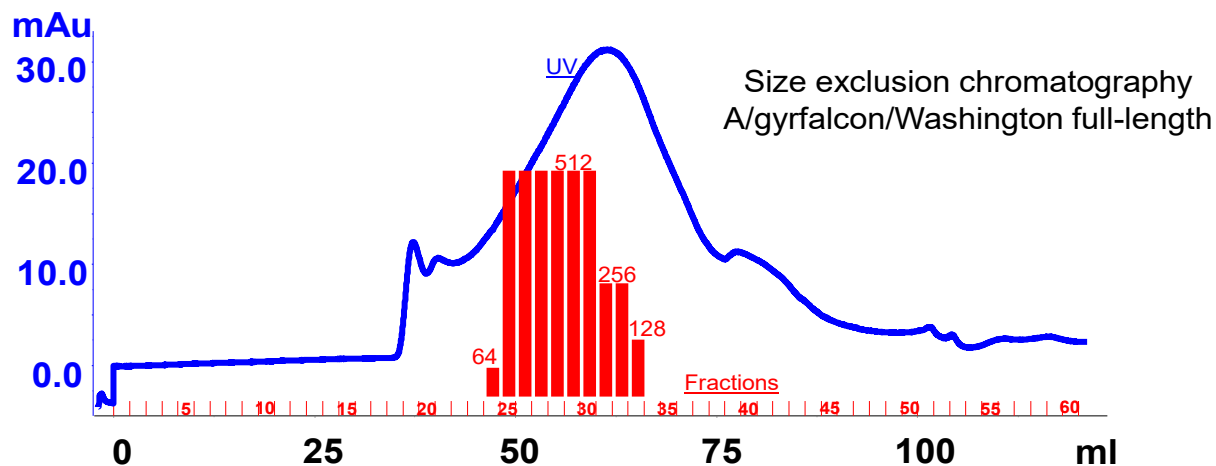
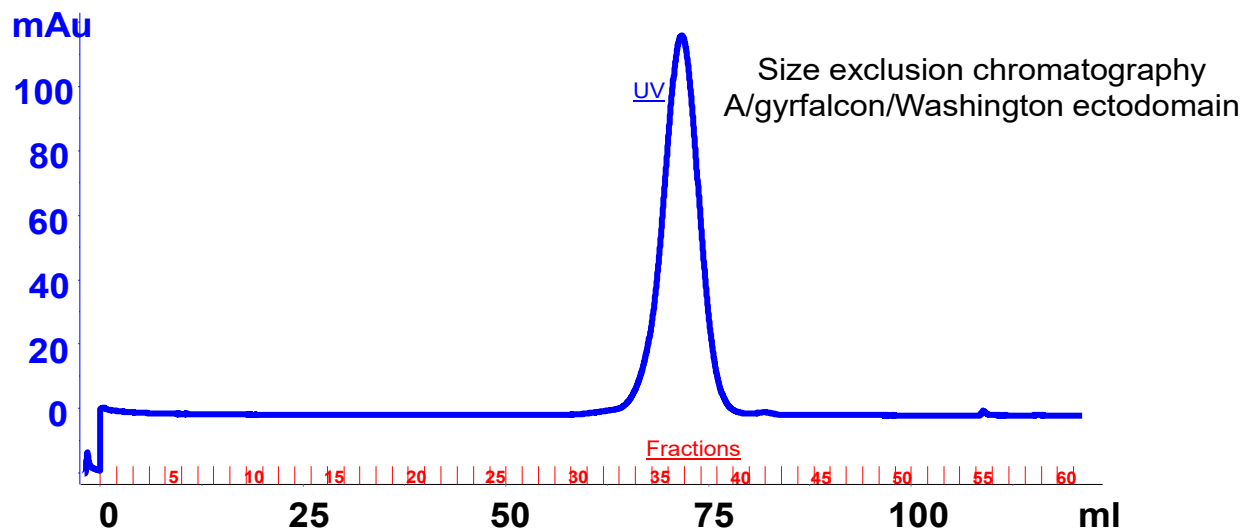


Supplementary Figure 1 - Size exclusion chromatography profiles of affinity purified A/gyrfalcon/Washington ectodomain (top) or full-length rHA (bottom). HA values for individual fractions of the full-length SEC are shown in the red bars.



Supplementary Figure 2 - Characterization of Expi293 expressed H2 rHA. Recombinant A/chicken/Ohio ectodomain HA from transfected Expi293 cells was purified and characterized by SDS-PAGE under reducing conditions, stained with Coomassie blue (top left) or transferred to nitrocellulose membranes for analysis by Western blot (bottom left). rHA, pre-SEC was analyzed for HA activity using chicken red blood cells and a starting protein concentration of 0.79 mg/mL in the 1:2 well (right).

