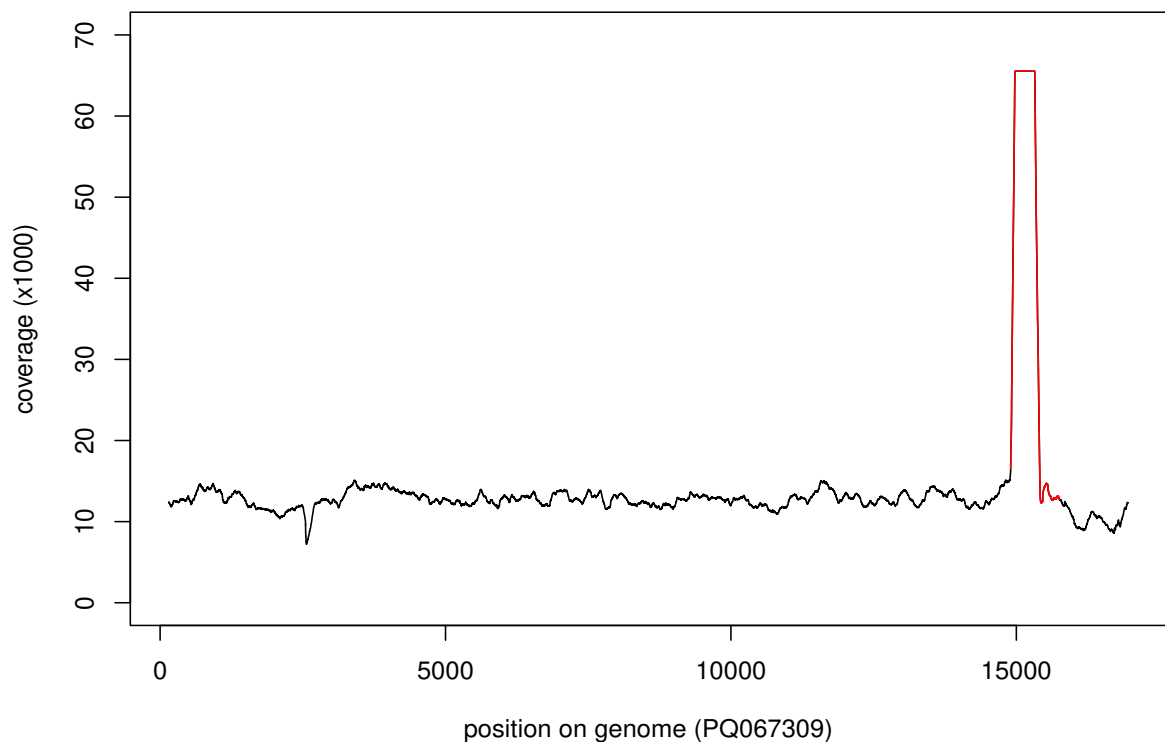


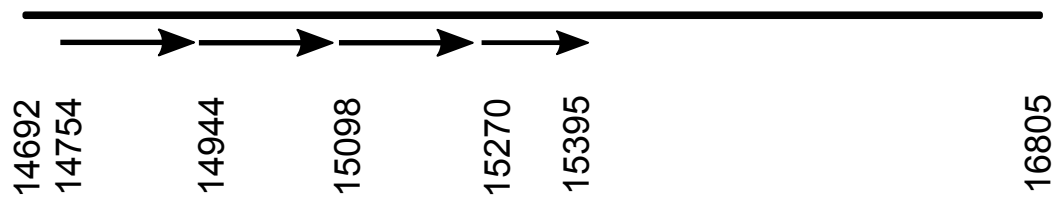
The complete mitochondrial genome of the shining leaf chafer *Mimela junii* (Duftschmidt, 1805) (Coleoptera: Scarabaeidae)

Nardi Francesco, Funari Rebecca, Carapelli Antonio, Badano Davide, Frati Francesco, Cucini Claudio.

a



b



Supplementary Fig. S1: a) Coverage over the mitochondrial genome. Red line corresponds to the region characterized by the presence of repeats. b) Graphical representation of the Control Region, including the position of the 172bp repeats (three complete, one incomplete copy).