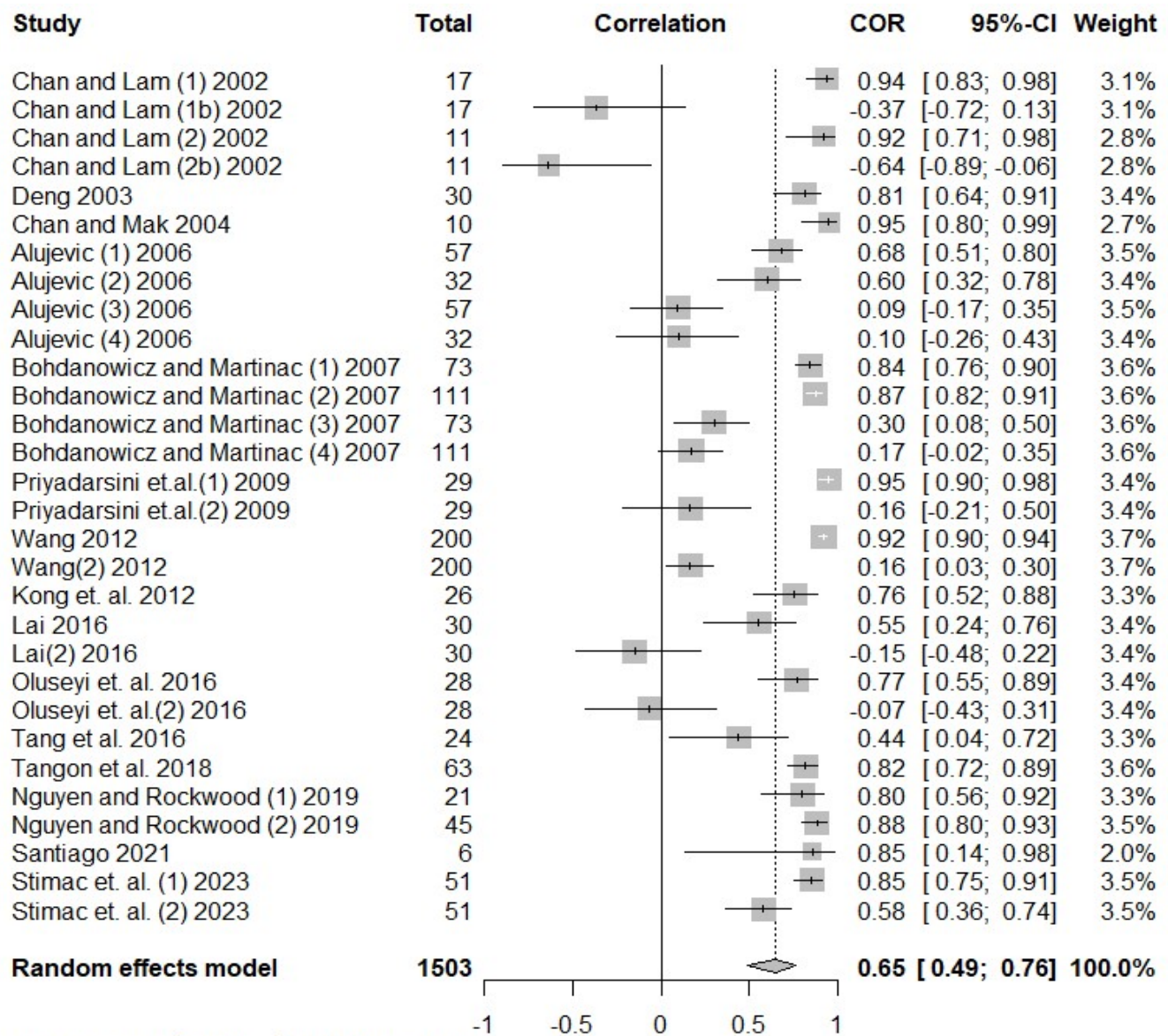
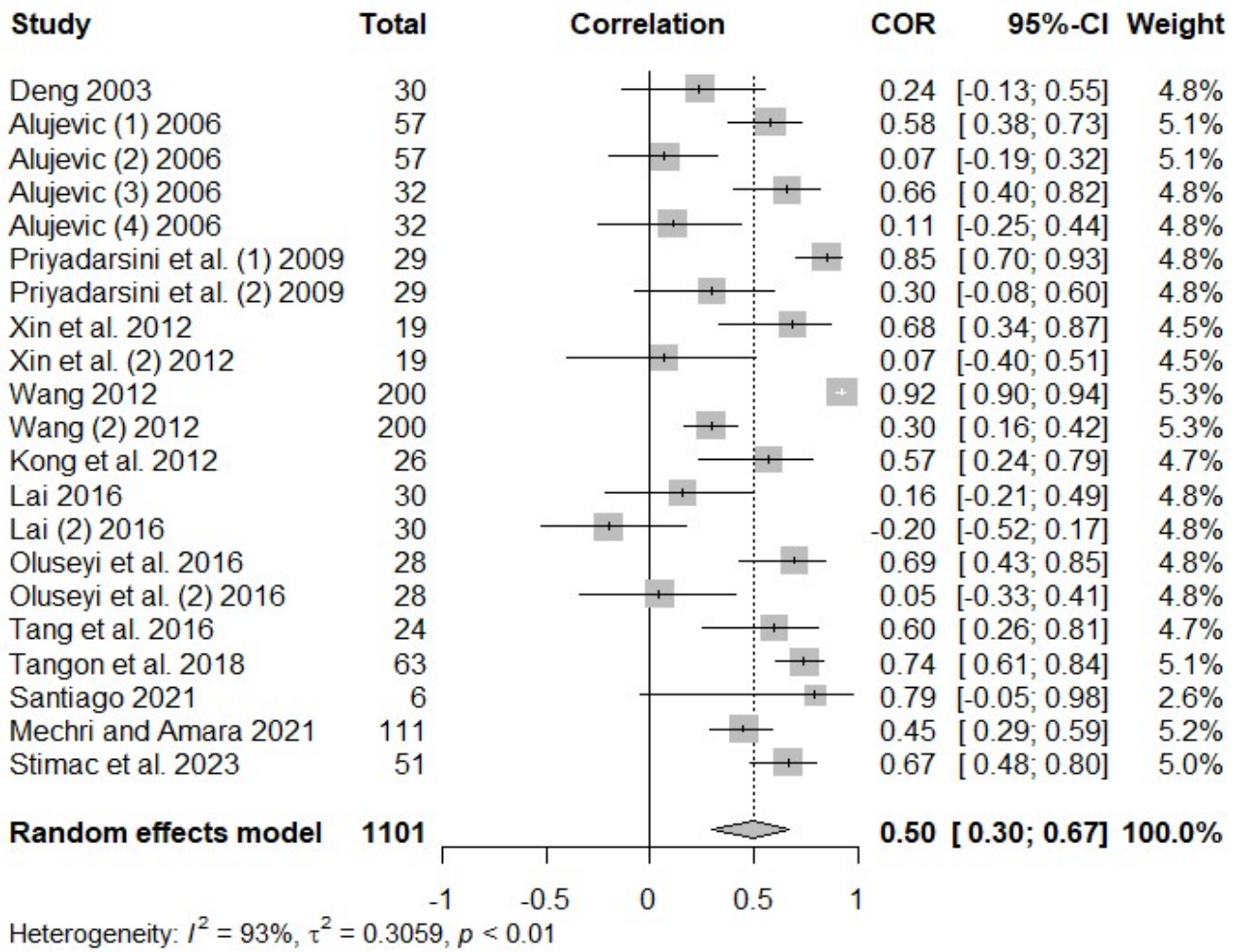


## 1. Floor Area

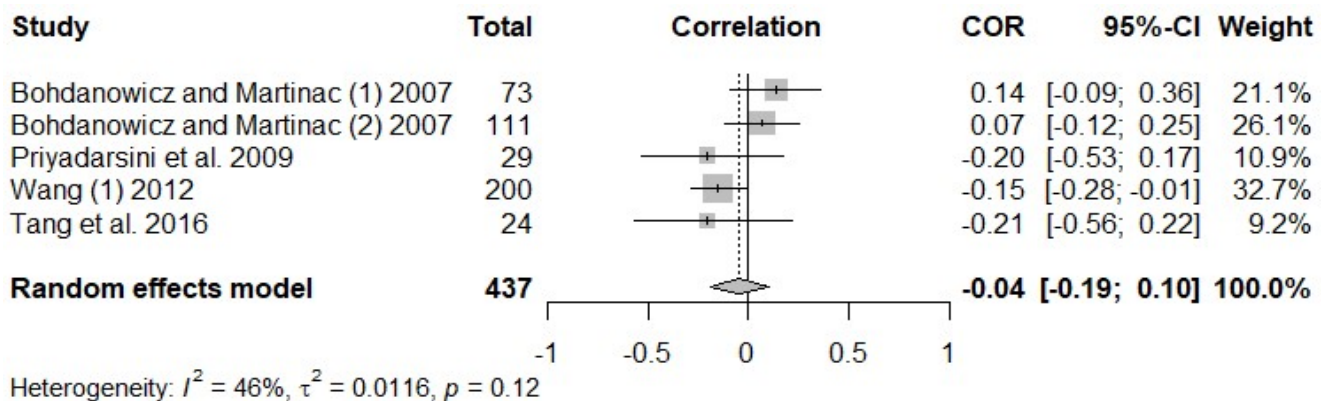


Heterogeneity:  $I^2 = 95\%$ ,  $\tau^2 = 0.3852$ ,  $p < 0.01$

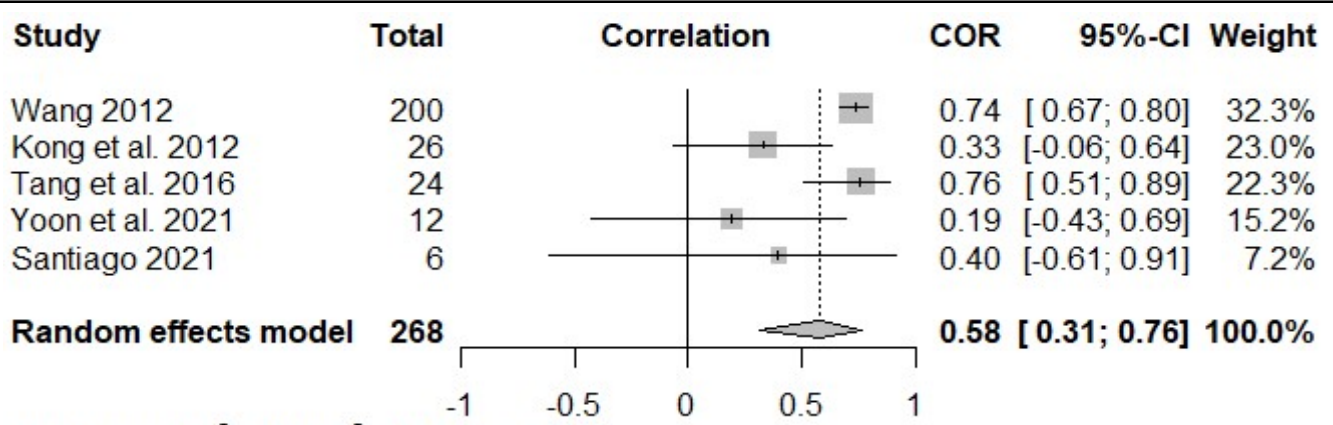
## 2. Guestrooms



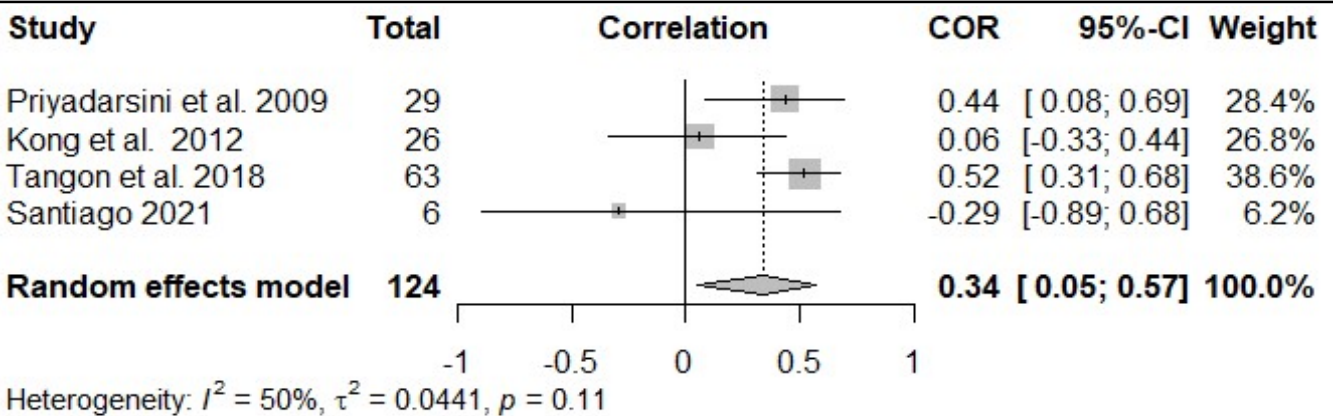
## 3. Construction Year



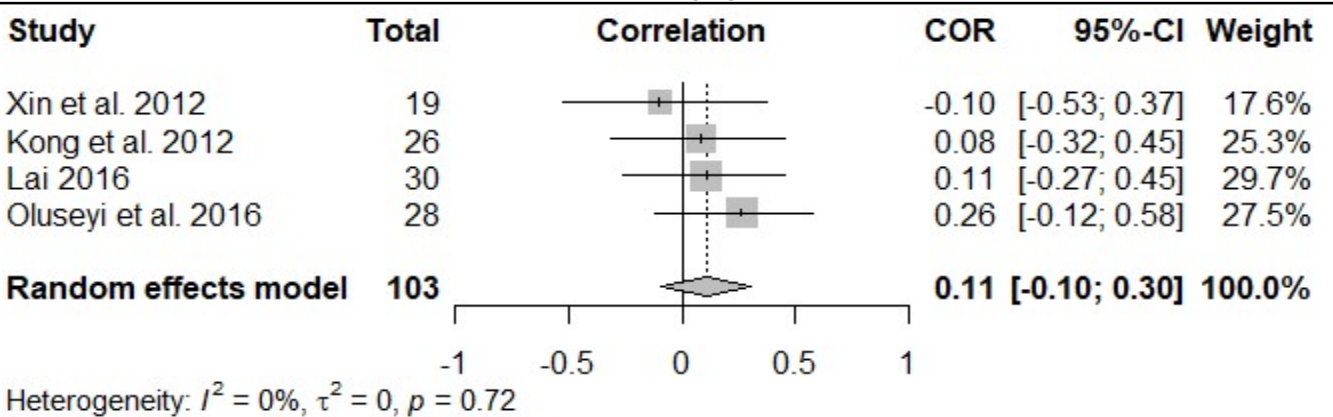
4. Star Level



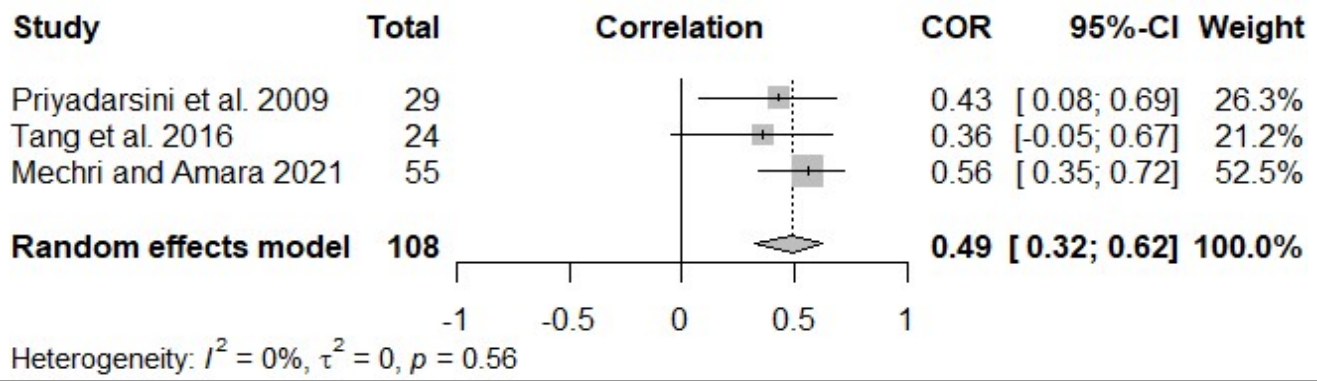
5. Number of Floors



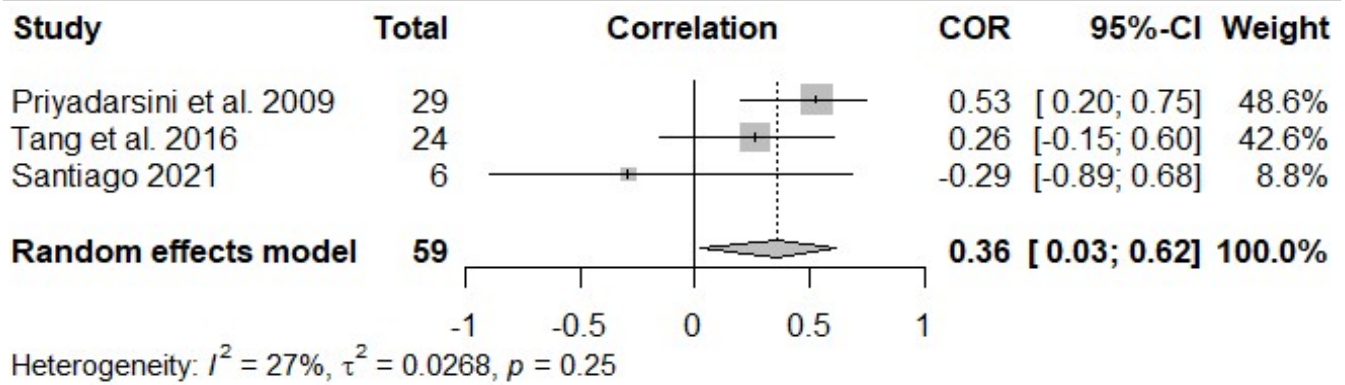
6. Building Age



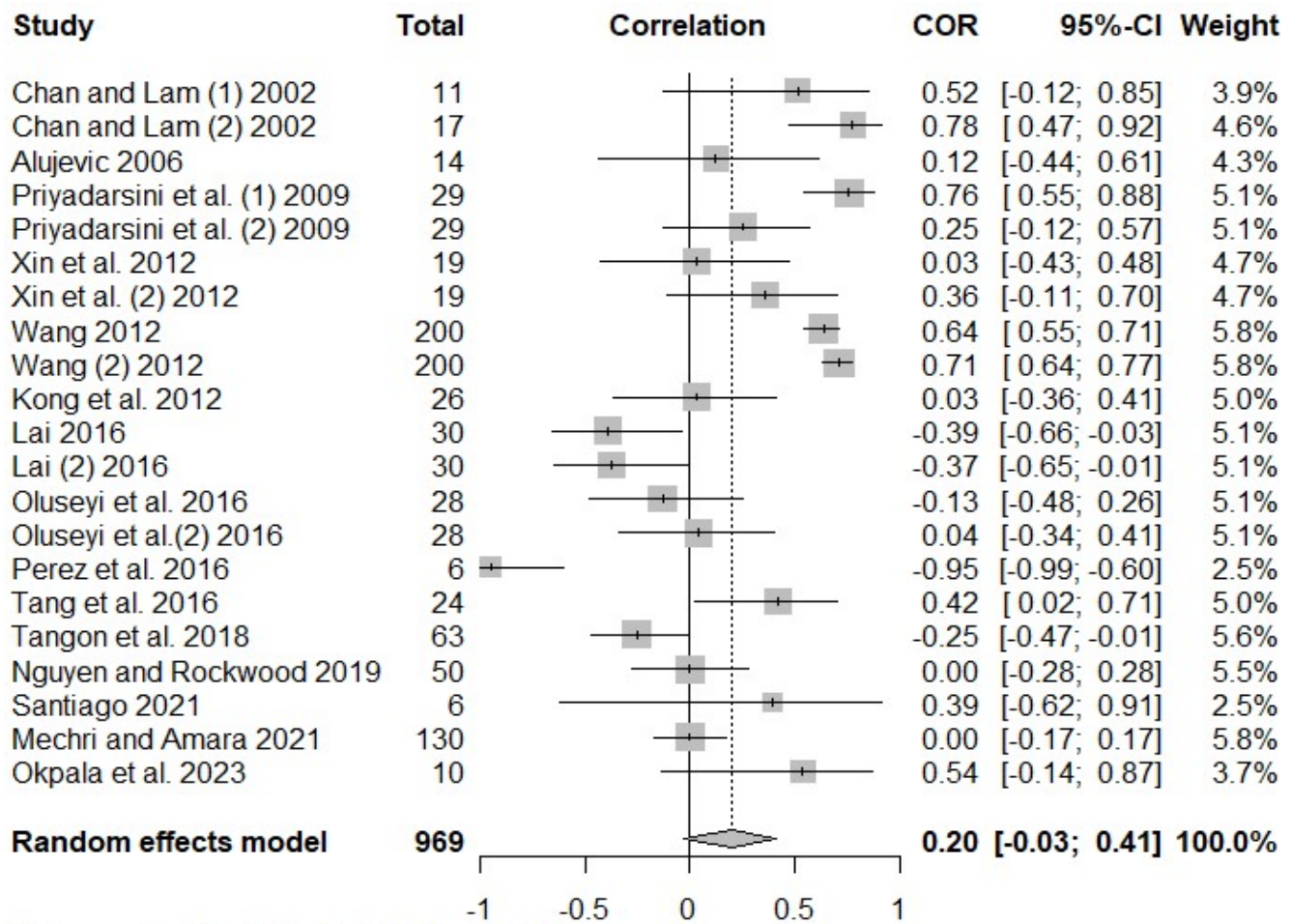
7. Guestrooms Area



8. Retrofit

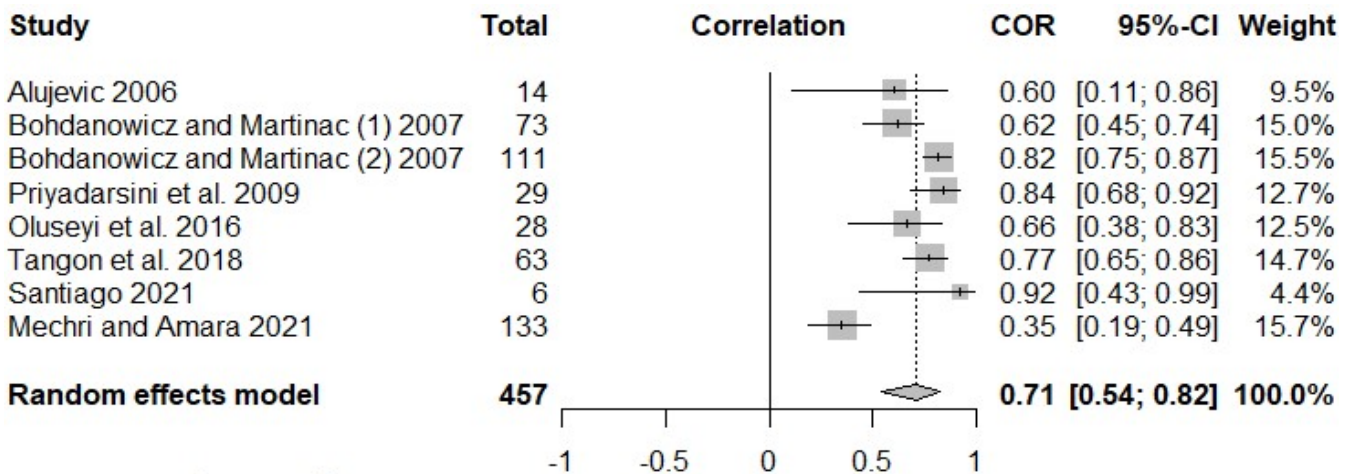


9. Occupancy



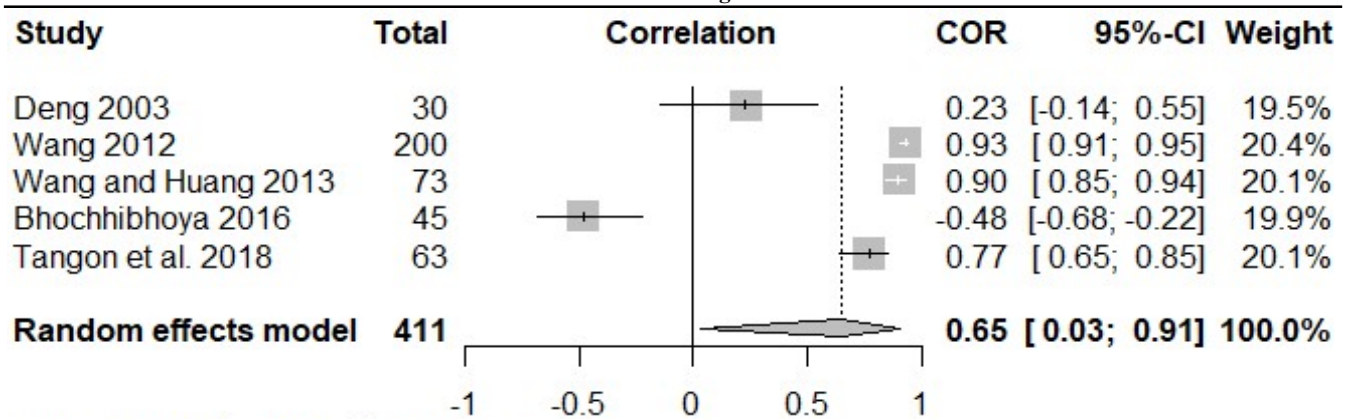
Heterogeneity:  $I^2 = 90\%$ ,  $\tau^2 = 0.2384$ ,  $p < 0.01$

10. Guest-nights



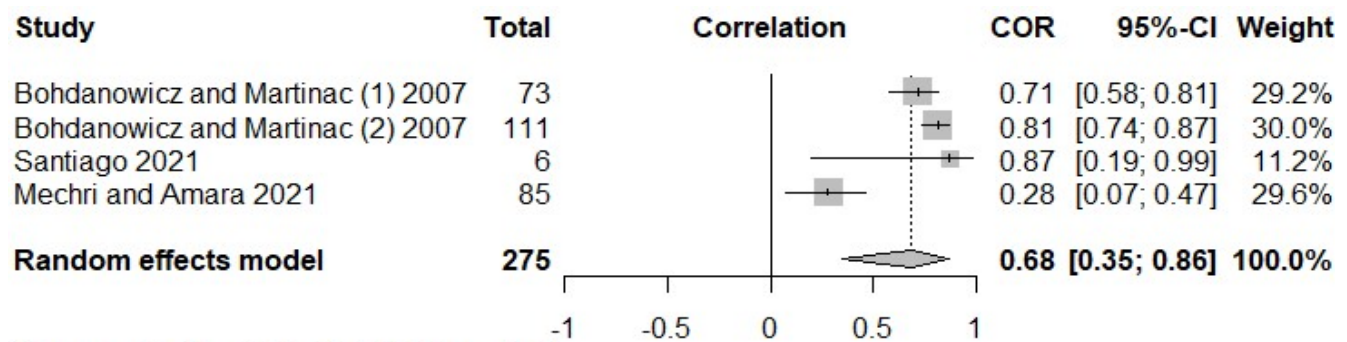
Heterogeneity:  $I^2 = 85\%$ ,  $\tau^2 = 0.1188$ ,  $p < 0.01$

11. Number of guests



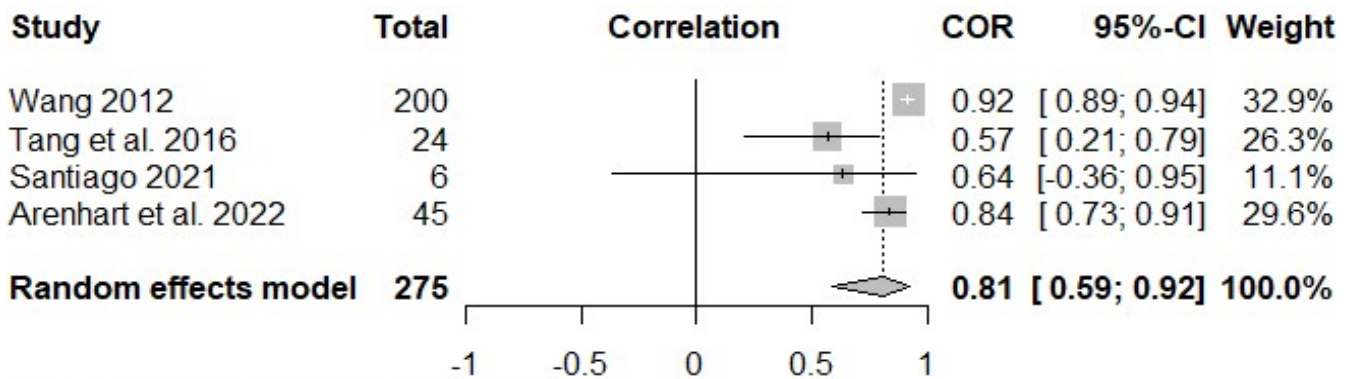
Heterogeneity:  $I^2 = 98\%$ ,  $\tau^2 = 0.7159$ ,  $p < 0.01$

12. Food covers



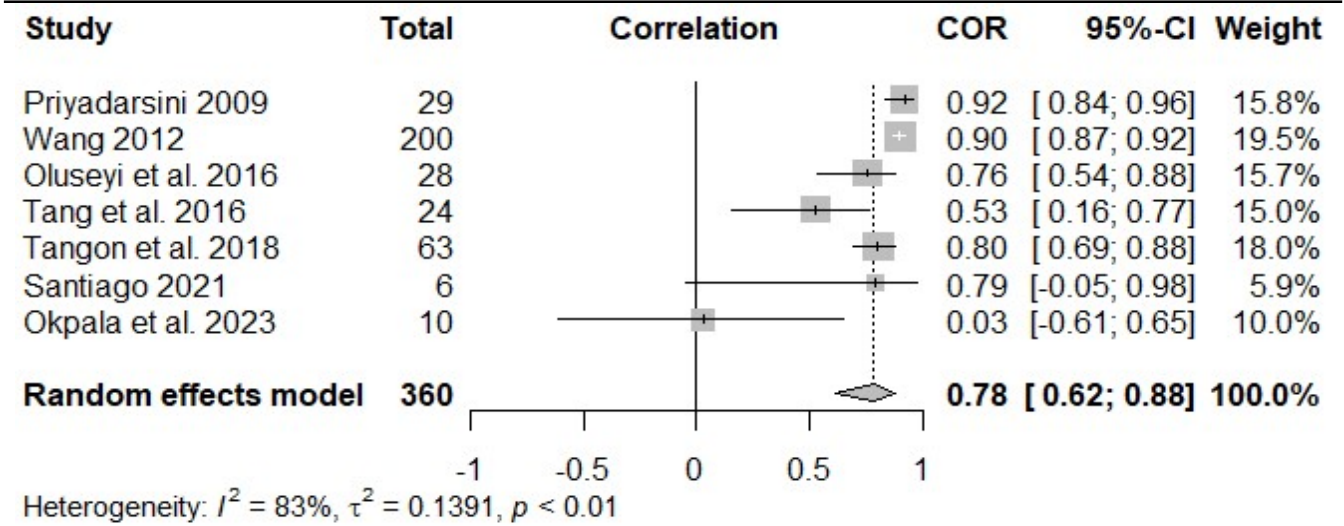
Heterogeneity:  $I^2 = 91\%$ ,  $\tau^2 = 0.1832$ ,  $p < 0.01$

13. Room Revenue

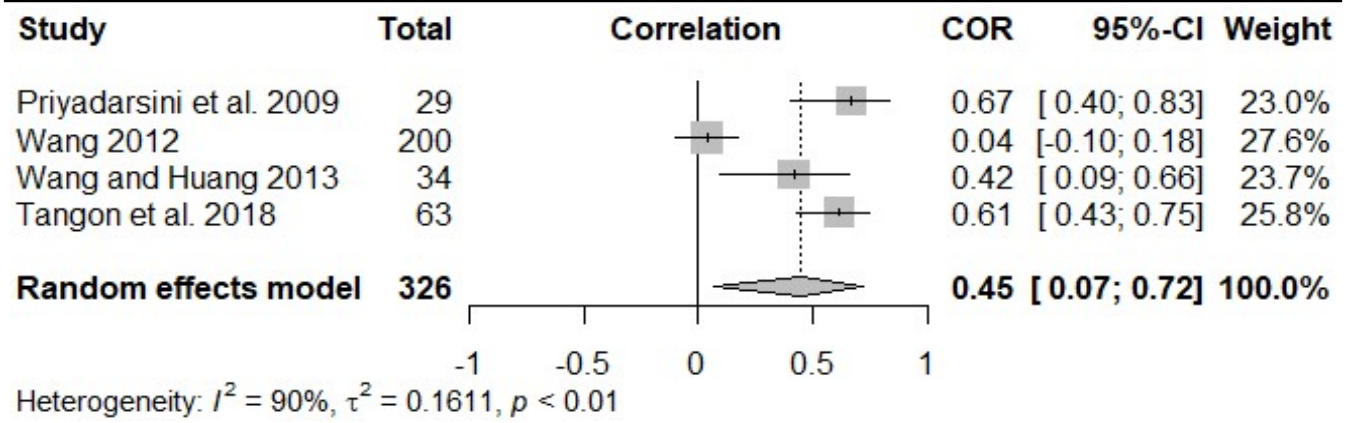


Heterogeneity:  $I^2 = 85\%$ ,  $\tau^2 = 0.1628$ ,  $p < 0.01$

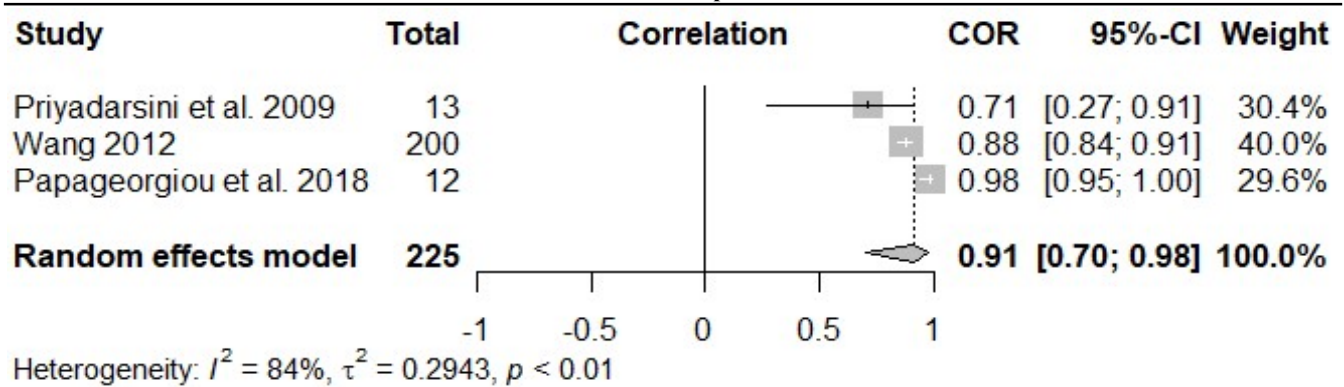
14. Number of Employees



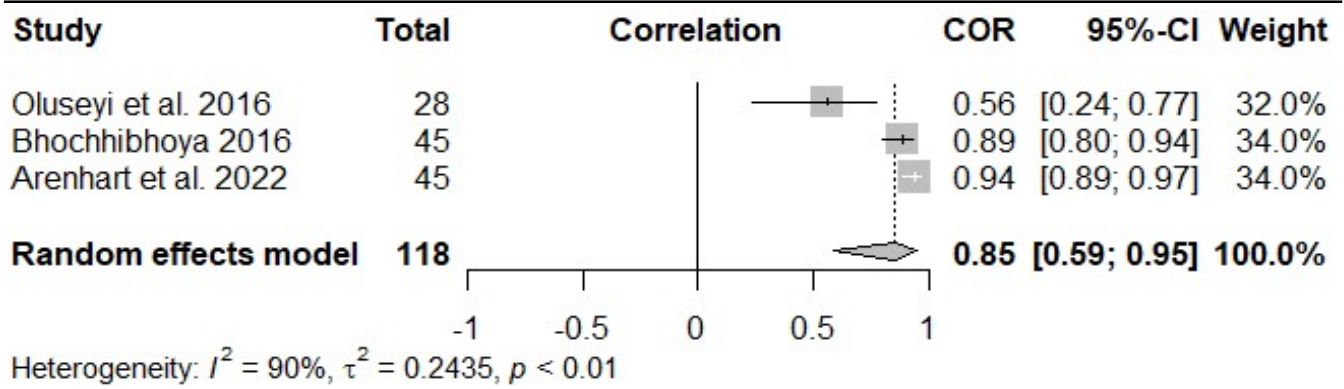
15. Employees Density



16. Outdoor temperature



17. Carbon Emissions



18. Water Use

