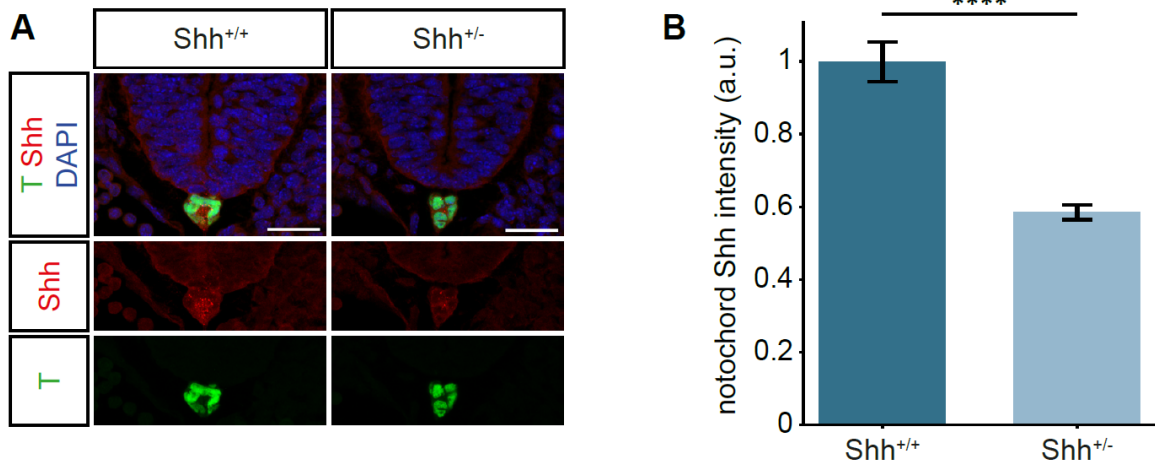


**Figure S8**



**Figure S8. Shh levels in the notochord are reduced in Shh heterozygous embryos at E8.75. A.** Representative mouse brachial sections of E8.75 wildtype and Shh<sup>+/-</sup> littermates. Immunostaining as indicated. Scale bar = 30  $\mu$ m. **B.** Quantification of the Shh intensity in the notochord in the experiment in A. Two-tailed *t*-test:  $P < 0.0001$ . Error bars show SEM. Number of sections:  $n = 59$  (control),  $n = 54$  (mutant).