

Supplementary Material for Impact of commonly administered drugs on the progression of spinal cord injury: a systematic review

Lucie Bourguignon ^{1,2,3*#}, Louis P. Lukas ^{1,2,3*#}, Bethany R. Kondiles ^{4,5}, Bobo Tong ⁴, Jaimie J. Lee ⁴, Tomás Gomes ⁶, Wolfram Tetzlaff ⁴, John L.K. Kramer ^{4,7,8}, Matthias Walter ⁹, Catherine R. Jutzeler ^{1,2,3}

¹*Department of Health Sciences and Technology, ETH Zurich, Zurich, Switzerland* (Lucie Bourguignon; Louis P. Lukas; Catherine R. Jutzeler)

²*SIB Swiss Institute of Bioinformatics, Lausanne, Switzerland* (Lucie Bourguignon; Louis P. Lukas; Catherine R. Jutzeler)

³*Schulthess Klinik, Zurich, Switzerland* (Lucie Bourguignon; Louis P. Lukas; Catherine R. Jutzeler)

⁴*International Collaboration on Repair Discoveries (ICORD), University of British Columbia, Vancouver, British Columbia, Canada* (Bethany R. Kondiles; Bobo Tong; Jaimie J. Lee; Wolfram Tetzlaff; John L.K. Kramer)

⁵*Department of Zoology, University of British Columbia, Vancouver, British Columbia, Canada* (Bethany R. Kondiles, PhD)

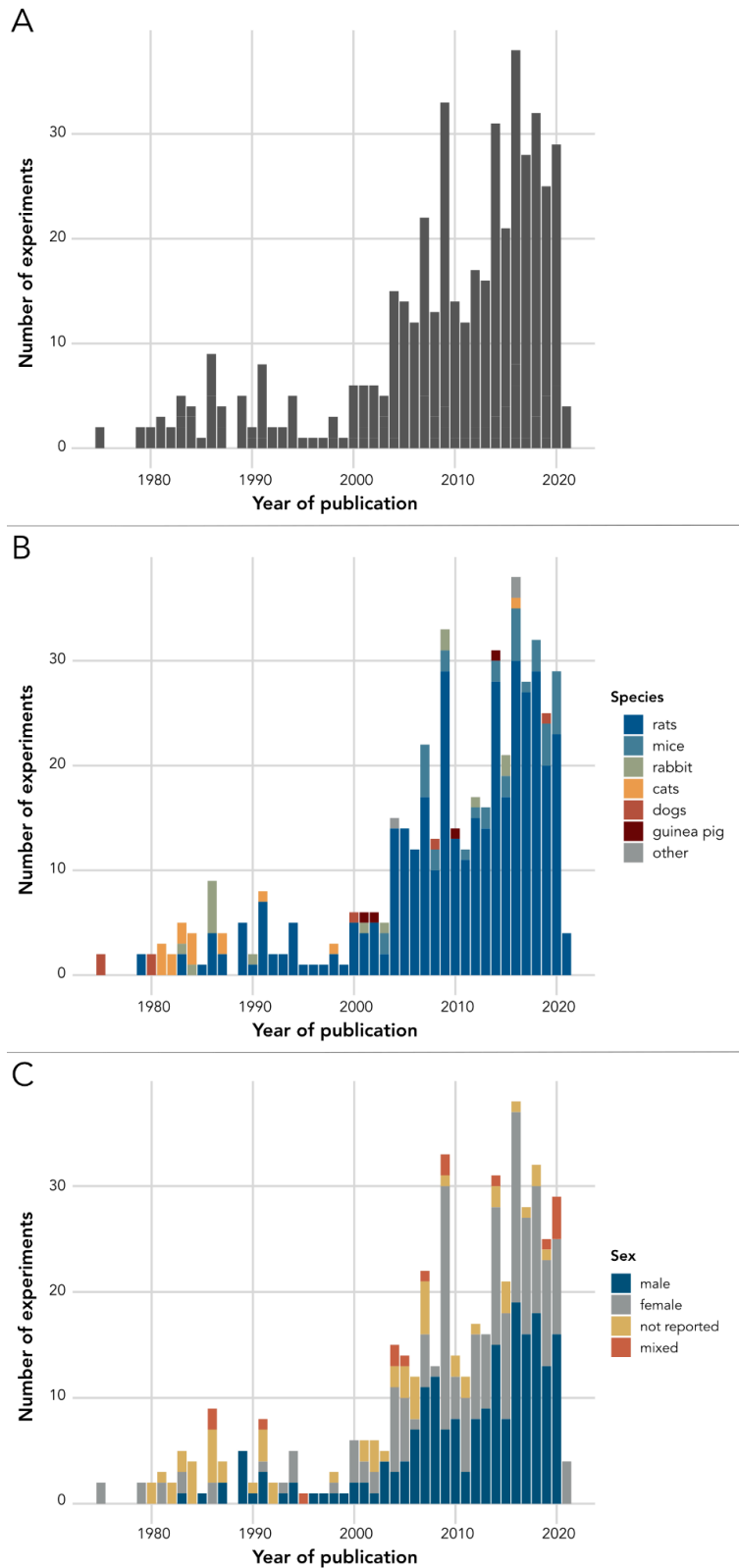
⁶*Department of Biosystems Science and Engineering, ETH Zurich, Basel, Switzerland* (Tomas Gomes)

⁷*Djavad Mowafaghian Centre for Brain Health, University of British Columbia, Vancouver, British Columbia, Canada* (John L.K. Kramer)

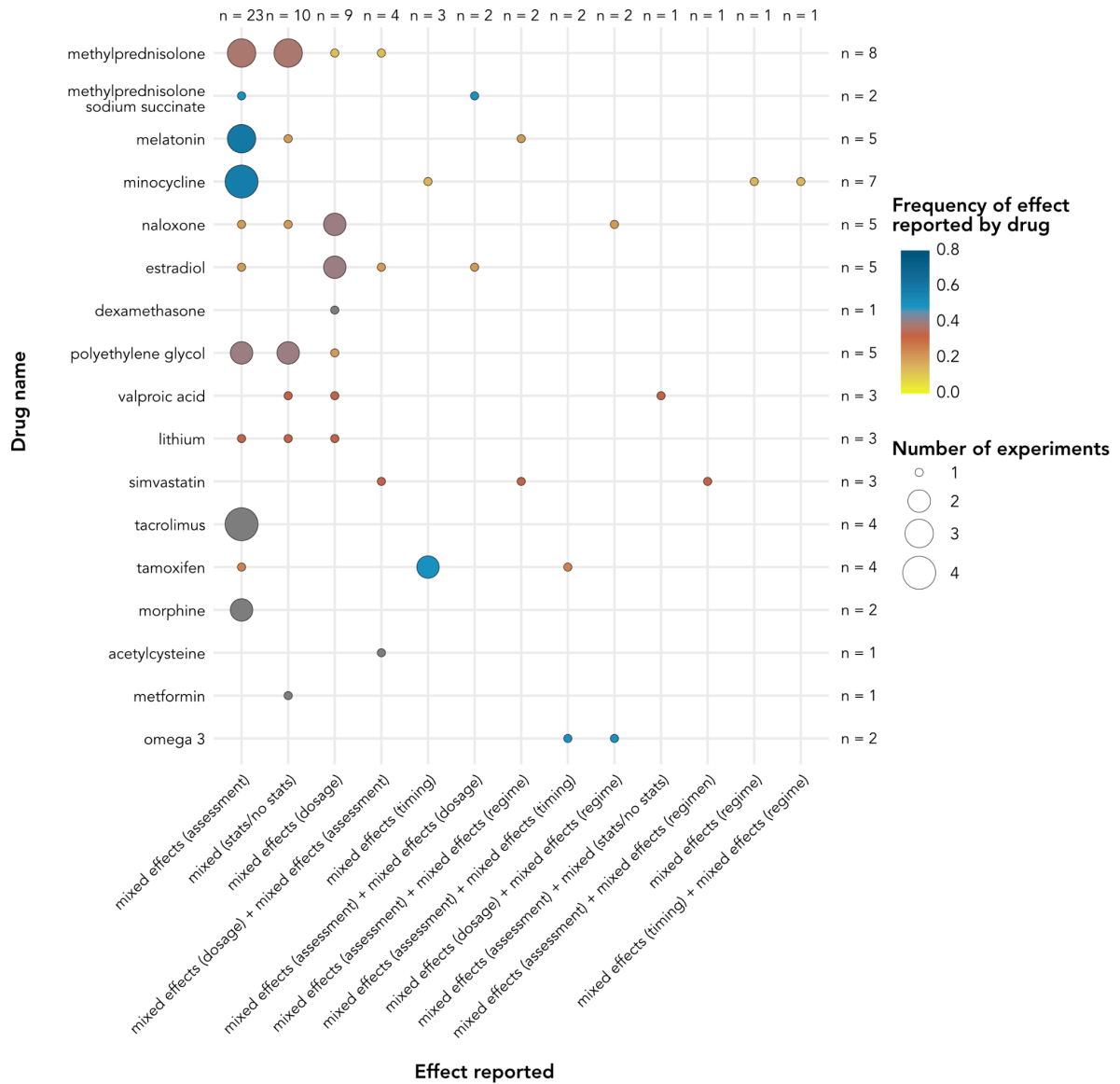
⁸*Department of Anesthesiology, Pharmacology, and Therapeutics, Faculty of Medicine, University of British Columbia, Vancouver, British Columbia, Canada* (John L.K. Kramer)

⁹*University Hospital Basel, University of Basel, Basel, Switzerland* (Matthias Walter, MD, PhD)

*These authors contributed equally



Supplementary Figure S1. Publication trends over time. A General overview of the number of experiments included per year of publication. **B** Details of distribution of species used in animal models over time. **C** Details of distribution of sex in animal models over time.



Supplementary Figure S2. Details of mixed drug effects reported in at least five experiments. Circle size is proportional to the number of experiments reporting the effect of interest. Circles are colored proportionally to the frequency that the effect of interest represents among all experiments studying the drug of interest.

Supplementary Table S1. Neurological and functional outcomes for human studies included in the review.

Category	Assessment name reported	Assessment
neurological	neurological (motor and sensory)	marked recovery (combination of improvement in AIS grade and walking function)
		pinprick, light touch, motor function scale
		ASIA motor and sensory scores
		ASIA scale: motor and sensory composites
		ASIA motor score, ASIA sensory score
		motor score; light touch (LT) and pin prick (PP) scores
	neurological (motor)	ASIA motor score
		ASIA Motor score
		ISNCSCI motor score
		strength
		discharge motor score
	neurological (other)	improvement to level of injury (change in segment to more caudal location)
	injury severity	marked recovery (combination of improvement in AIS grade and walking function)
improvement in ASIA scale		
ASIA impairment score and grade		
ASIA grade		
functional	functional (general)	Spinal Cord Independence Measure
		Functional Independence Measure
		London Handicap scale
		Short Form 36 Questionnaire
		FIM discharge score
	functional (mobility)	FIM motor score
	functional (mobility and general)	Walking Index for SCI II (WISCI II), Spinal Cord Independence Measure II (SCIM II)
	functional (mobility and spasticity)	overground walking performance; treadmill walking performance
spastic reflexes (modified Ashworth scale); walking function		
electrophysiology		EMG

Supplementary Table S2. Details on the bias classification for animal experiments.

Domain of bias	Classified as “unclear risk of bias”	Classified “high risk of bias”
Dose	No precise dose reported, including “high dose”	Not reported
Species	Subspecies not reported	Not reported
Route	-	Not reported
Level of injury	No precise level or range reported, including “cervical”, “mid-thoracic”, “thoracic”, “lumbar-sacral”	Not reported
Treatment time	-	Not reported
Results	Mixed results due to lack of statistics reported, including “mixed (stats/no stats)”, “mixed effects (assessment) + mixed (stats/no stats)”, “no stats”	Not reported
Sample size	Sample size reported as range or bounded	Not reported
Sex	Mixed population (male/female) with ratio not reported	Not reported
Blinding	Not reported	No blinding applied
Age	Reported as “adult”, “young” with no precise age reported	Not reported

Supplementary Table S3. Reported sample sizes by species in animal studies. *Other* includes Yucatan miniature pigs (n=2) and yellow eel *Anguilla anguilla* L. (n=1).

Species	Mean	SD	Median	Q1	Q3
cats	26.53	16.50	24.00	16.50	31.00
dogs	33.43	25.13	26.00	22.00	32.00
guinea pig	21.00	7.55	20.00	17.00	24.50
mice	120.62	83.33	96.00	50.25	176.50
other	31.33	16.17	22.00	22.00	36.00
rabbit	69.36	50.57	47.00	28.50	133.00
rats	61.60	46.71	48.00	32.00	79.50