



---

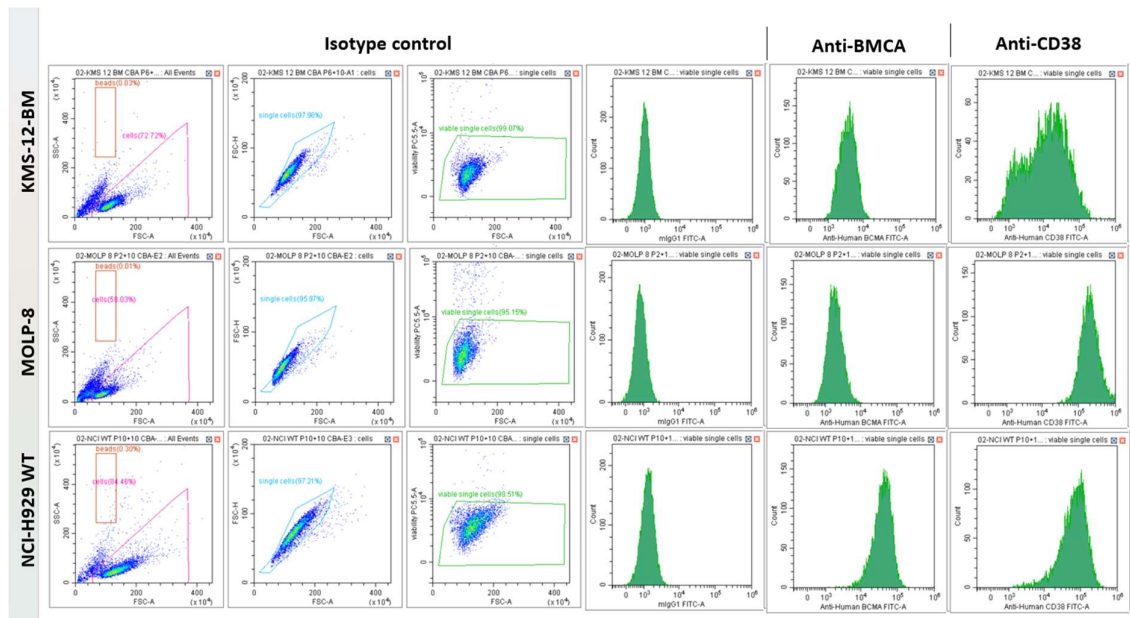
# **ISB 2001 trispecific T cell engager shows strong tumor cytotoxicity and overcomes immune escape mechanisms of multiple myeloma cells**

---

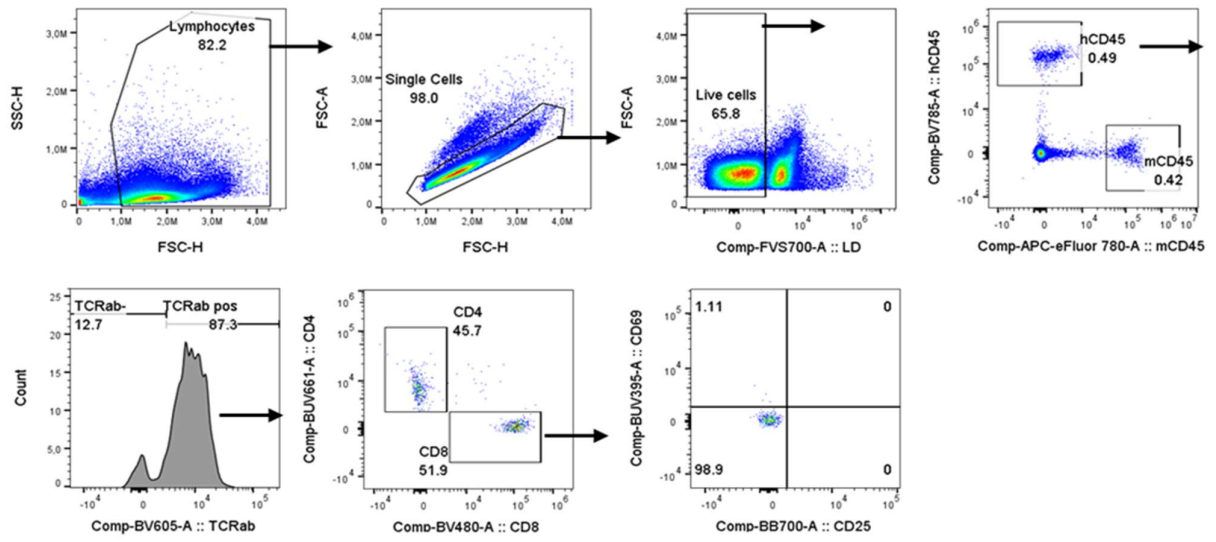
In the format provided by the authors and unedited

---

## Supplementary Figures



Supplementary Figure 1 (support Raw data of ED 3F). Gating strategy for assessment of the BCMA and CD38 human antibody binding capacity (BioCytex) on three MM cell lines (KMS-12-BM, NCI-H929 and MOLP-8).



Supplementary Figure 2 (Support Raw data of ED 7B). Full Flow Cytometry gating strategy to identify % CD25+ or % CD69+ of CD8+ T cells in Spleen at day 2.