

Supplemental figure 1 . Biophysical characterization of full nanobody panel

a

Yeast selections

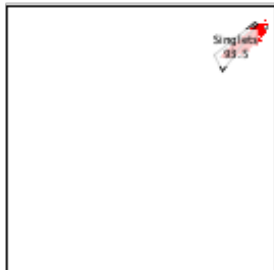
Live gate
FSC-A
vs.
SSC-A



Ungated
- (Live)
- (Singlets)
Q2: FITC-A+, APC-A+

FSC-A :: FSC-A
x
SSC-A :: SSC-A

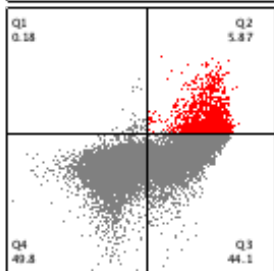
Singlets
FSC - A
vs.
FSC - H



Live
- (Singlets)
Q2: FITC-A+, APC-A+

FSC-A :: FSC-A
x
FSC-H :: FSC-H

Double +
quadrant
Comp-
FITC - A
vs.
APC - A



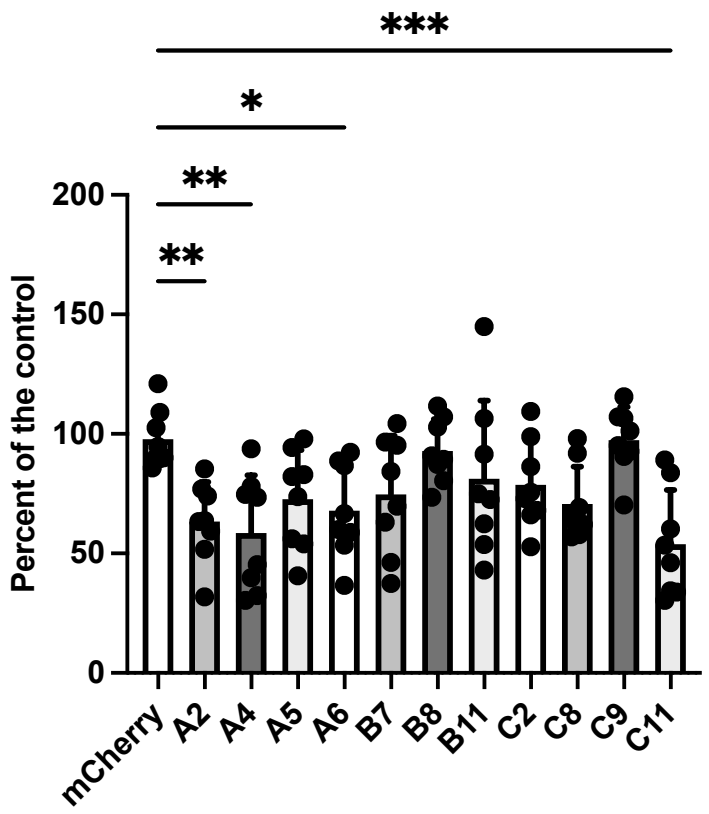
Live
Singlets
Live
Singlets
Q2: FITC-A+, APC-A+

FL1-A :: FITC-A
x
FL4-A :: APC-A

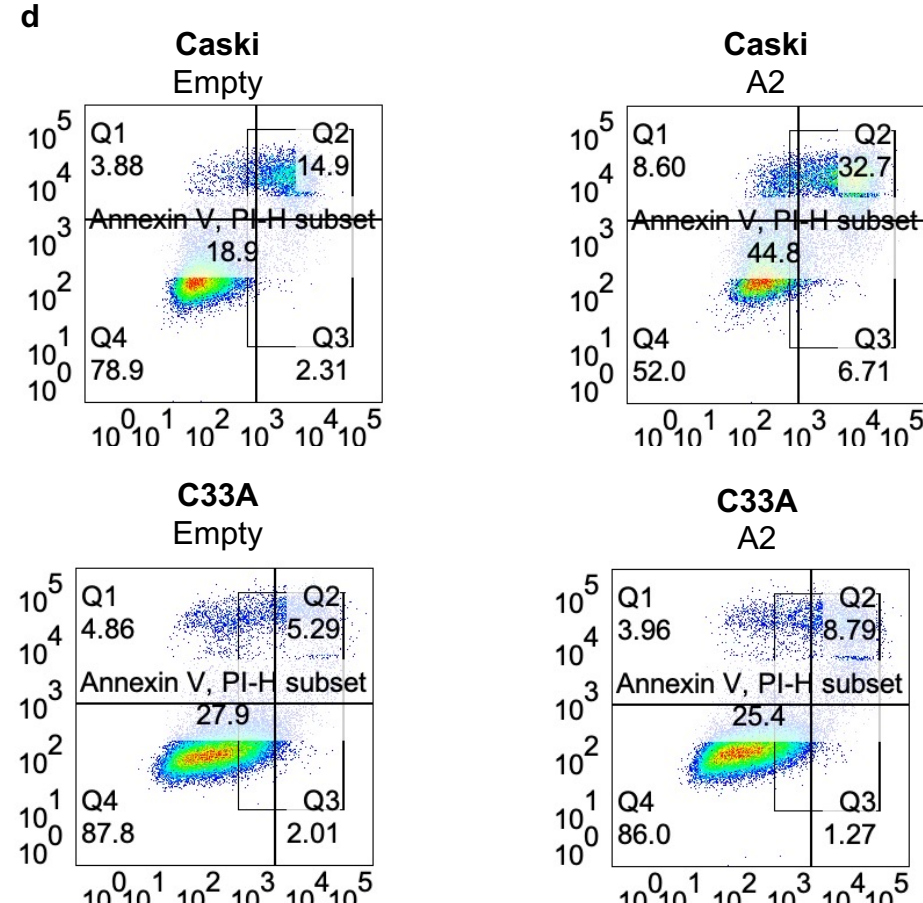
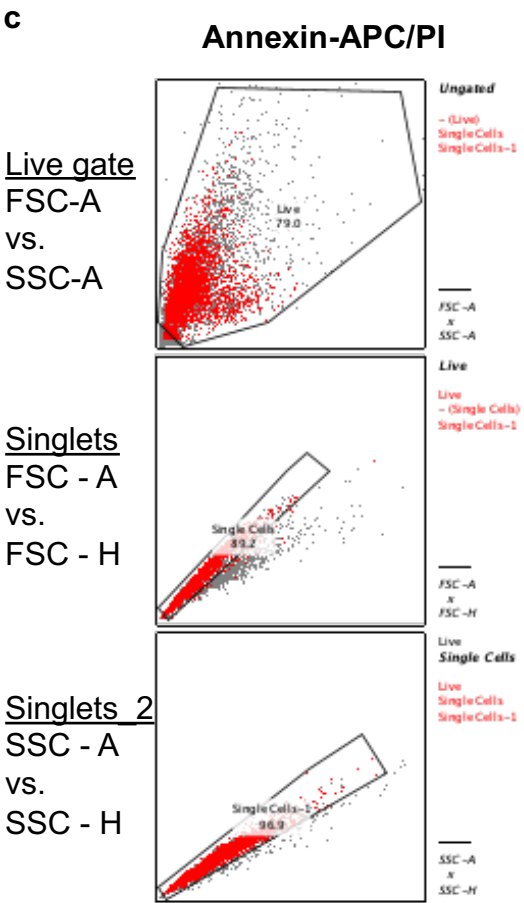
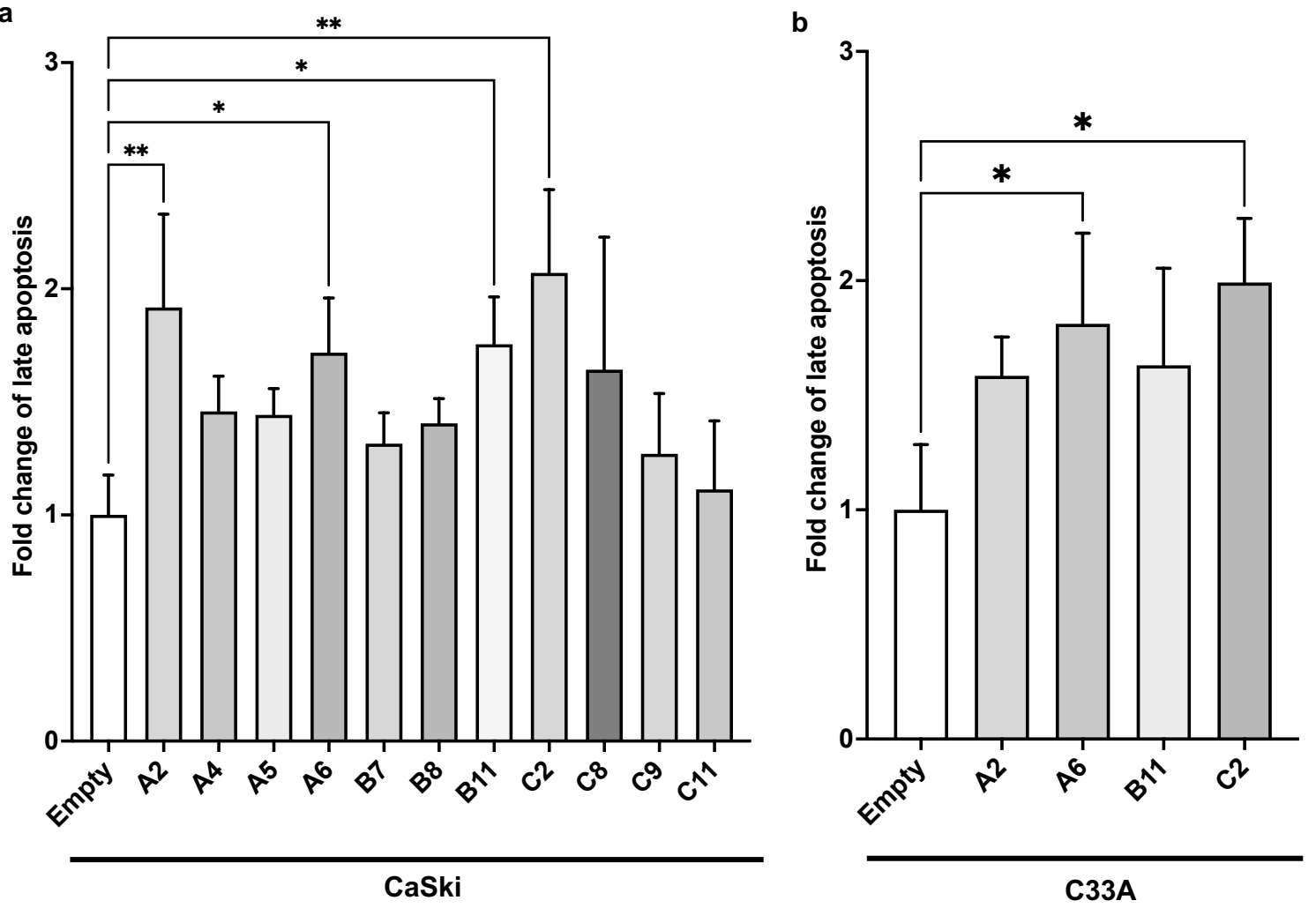
b

Nanobody clone	Melting temp (°C)
A2	60 ± 1.4
A4	69.7 ± 1.1
A5	46 ± 0.23
A6	77.2 ± 1.7
B7	72.4 ± 0.78
B8	77.6 ± 0.63
B11	78.5 ± 0.46
C2	74.8 ± 0.61
C8	74.8 ± 0.46
C9	69.5 ± 1.1
C11	72.5 ± 1.3

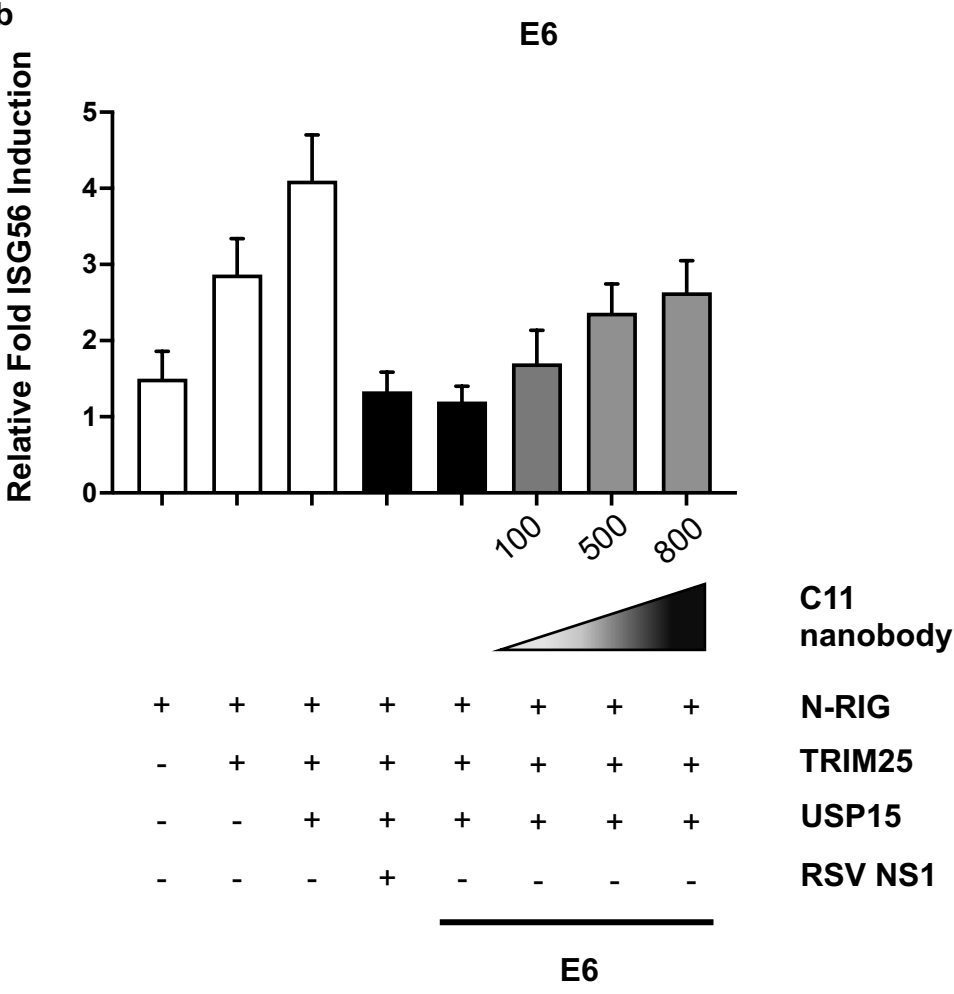
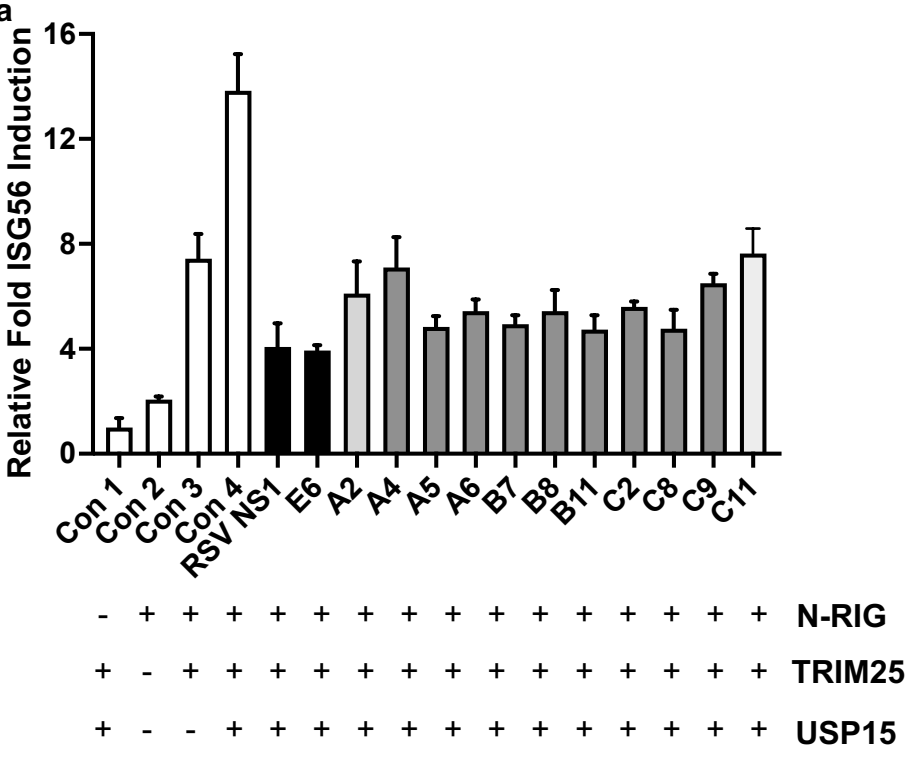
Supplemental figure 2 . Quantified colony formation screen.



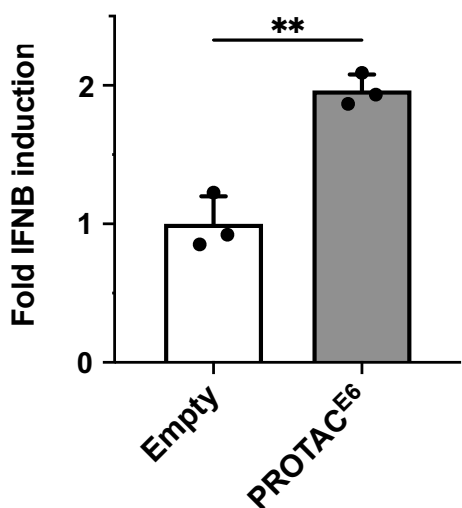
Supplemental figure 3 . Quantified Annexin-V and propidium iodide apoptosis screen.



Supplemental figure 4. ISG56 screen and dose-dependent relationship of nanobody C11 on ISG56 induction.



Supplemental figure 5. PROTAC^{E6} induction of IFNB mRNA levels



Supplemental figure 6. Mouse body weight

