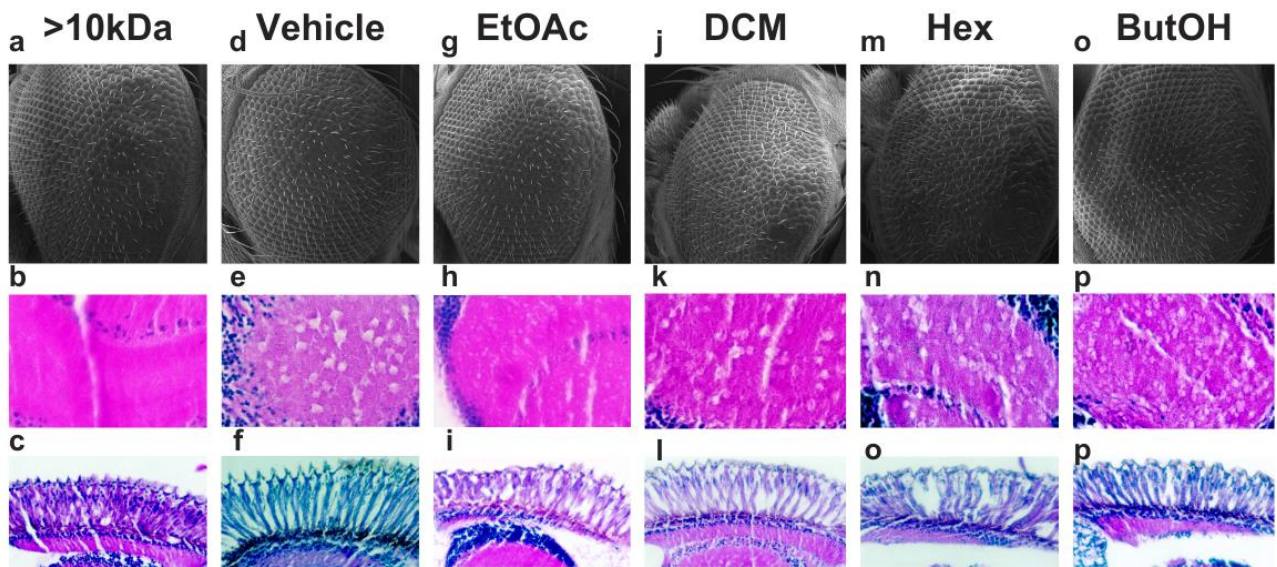


Supplementary Material



S1: Effects of kefir fractions and solvents in the *Drosophila melanogaster* Alzheimer's model ($A\beta_{42}$) on the morphologies of ommatidia, medulla, and retina. The representative images show: (a, d, g, j, m, o) scanning electron micrographs of the compound eye; (b, e, h, k, n, p) histologic sections of the medulla; and (c, f, i, l, o, p) histological sections of the retina of *Drosophila melanogaster* treated with the different fractions (>10 kDa, vehicle, ethyl acetate [EtOAc], dichloromethane [DCM], hexane [Hex] and butanol [ButOH]) 1-2 days post eclosion.