

iScience, Volume 27

Supplemental information

Does hybridization with an invasive species threaten Europe's most endangered reptile? Genomic assessment of Aeolian lizards on Vulcano island

Josephine R. Paris, Gentile Francesco Ficetola, Joan Ferrer Obiol, Iolanda Silva-Rocha, Miguel Angel Carretero, and Daniele Salvi

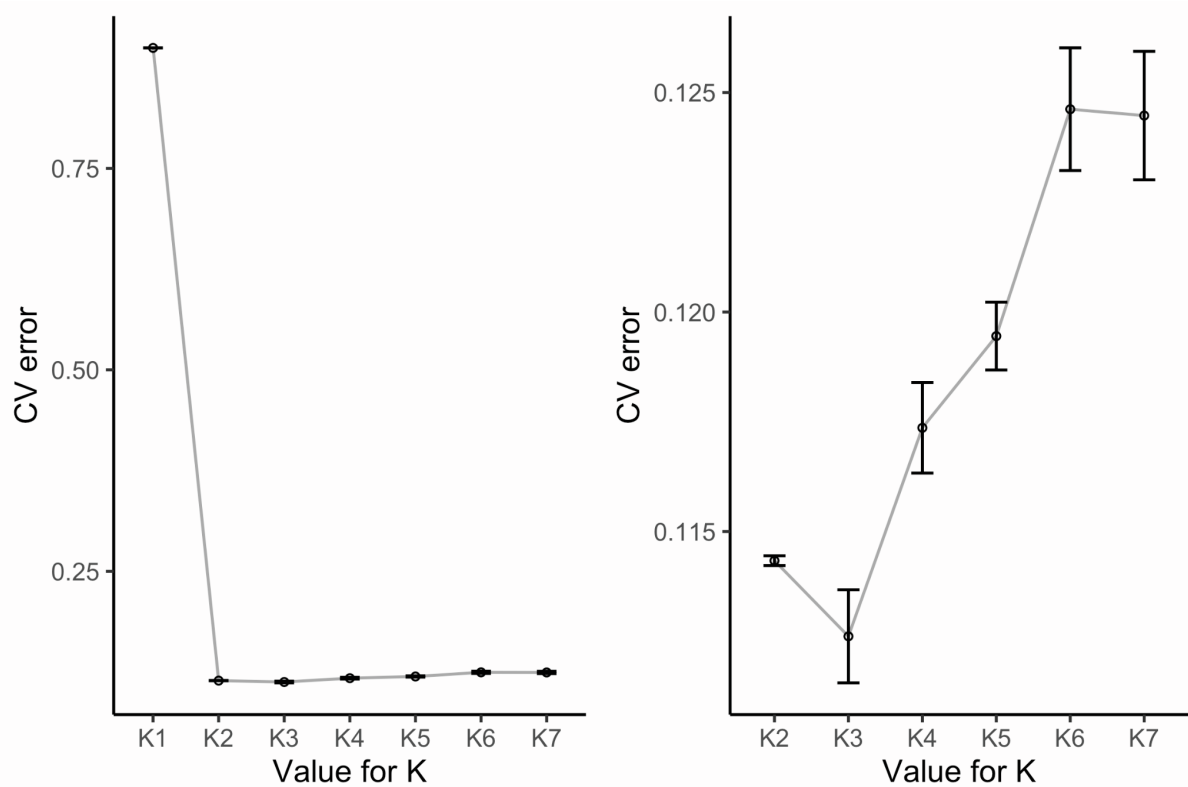


Figure S1. Cross validation (CV) error rate from Admixture analysis, Related to Figure 3. Analysis uses the full dataset, comparing brown phenotype individuals from Capo Grosso (n=51), intermediate phenotype individuals from Capo Grosso (n=38), *P. siculus* individuals from Vulcano (n=35), pure *P. raffonei* individuals from Scoglio Faraglione (n=5) and pure *P. siculus* individuals from Milazzo (n=5). Both plots show the CV error for each value of K. Error bars represent variation across 10 independent runs. The plot on the left shows the full CV error rate, whereas the plot on the right is without K=1, in order to observe the higher values of K.

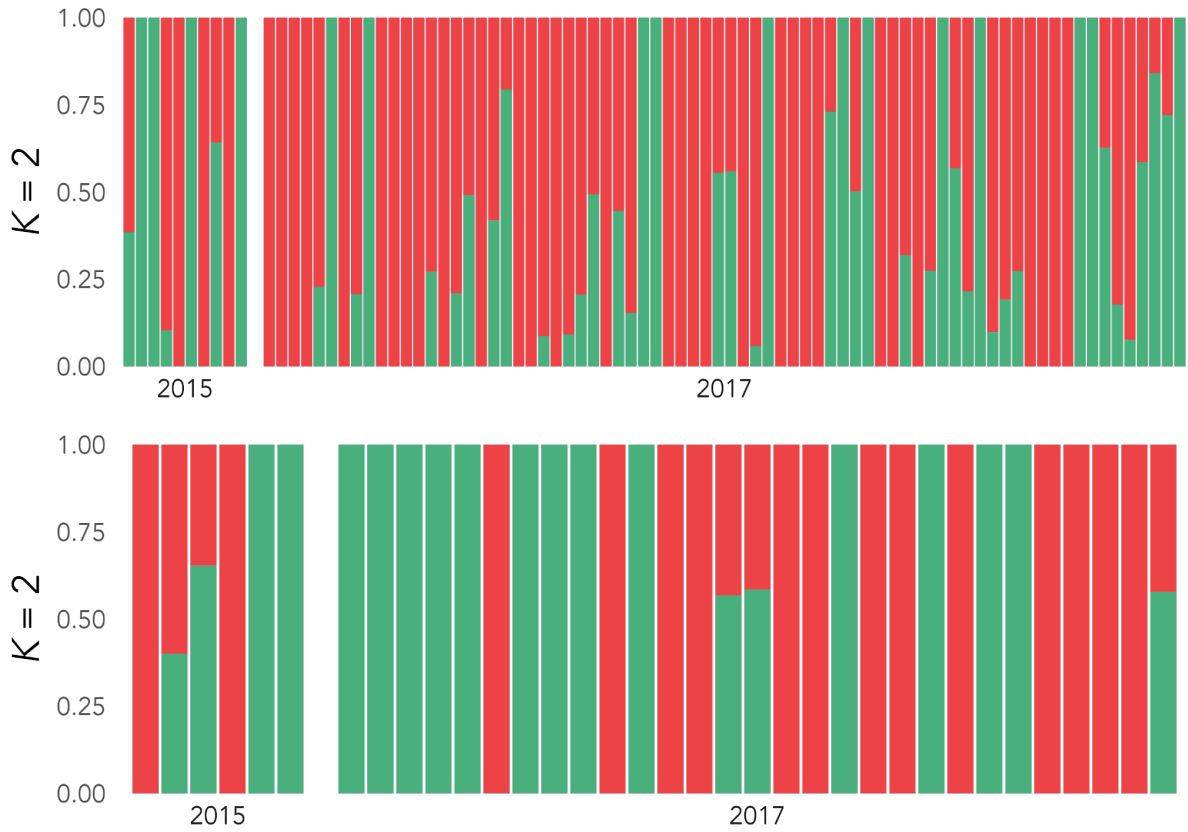


Figure S2. Admixture plots showing the $K=2$ proportions for *P. raffonei* (top) and *P. siculus* (bottom) to identify any potential biases arising from sampling year, Related to Figure 3.

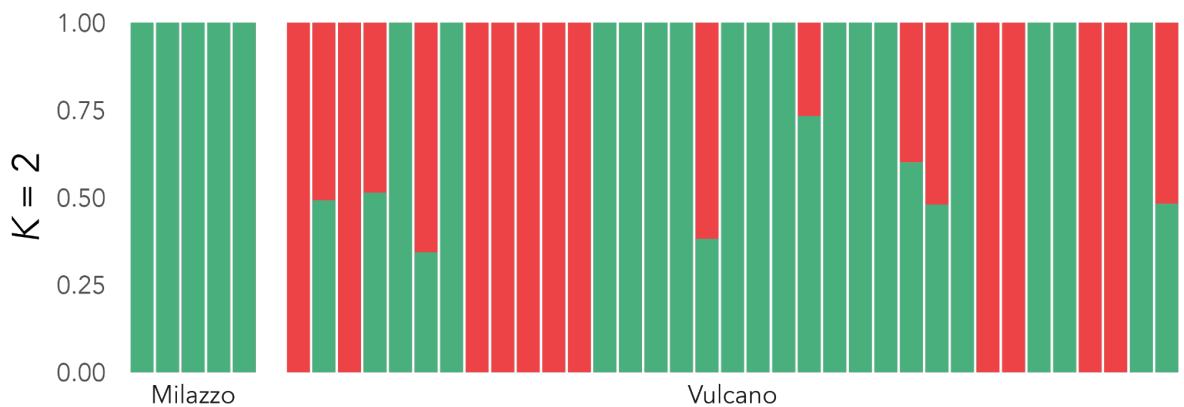


Figure S3. Hierarchical Admixture analysis of *P. siculus* individuals sampled from Milazzo and Vulcano, Related to Figure 3.