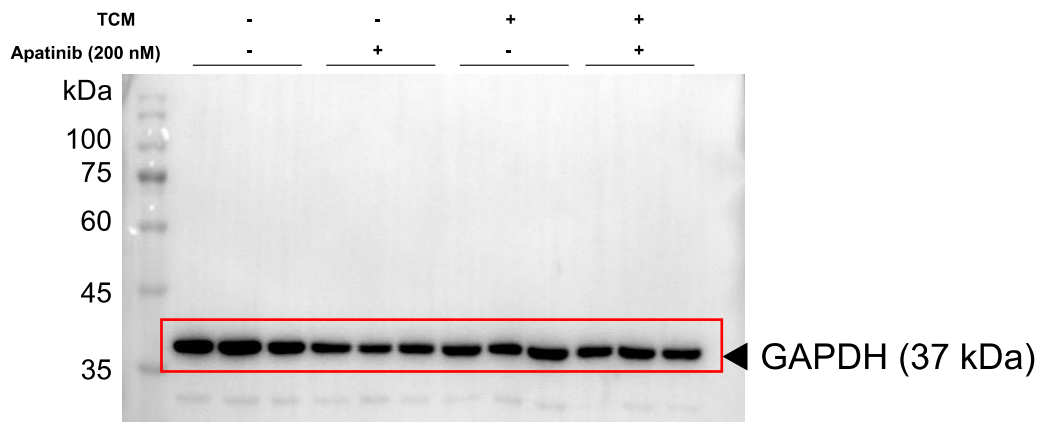
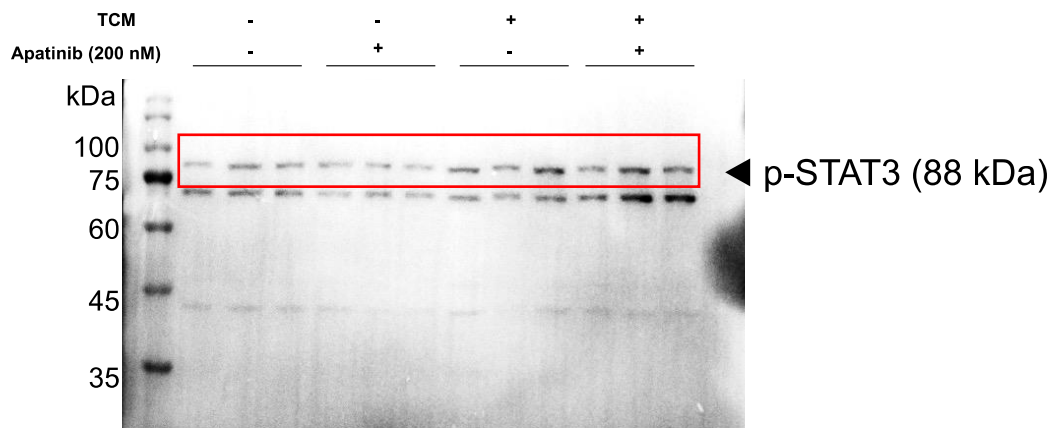
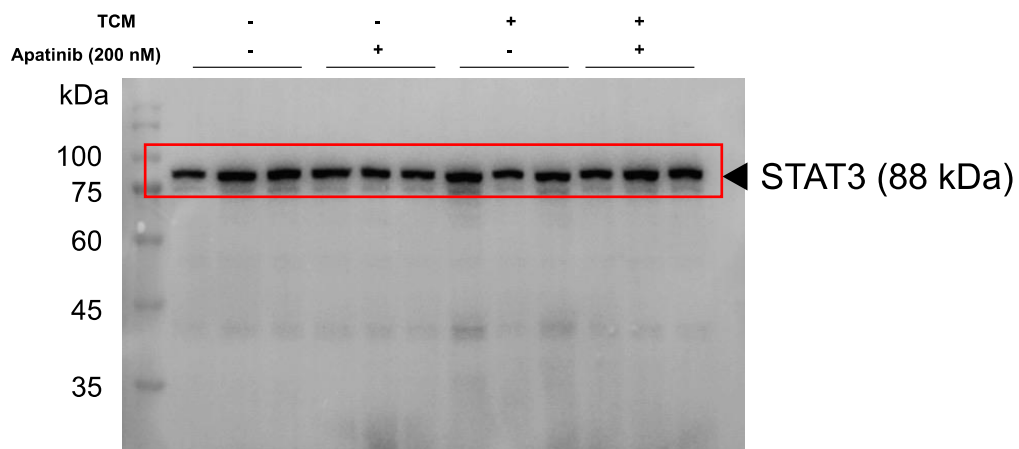


Original images of western blots before cropping. Expression levels of α SMA and VEGFA were assayed with western blot, respectively. GAPDH was used as loading internal control. The raw blot images of full length membranes and the red frames were the image present of Fig. 5. All gels are 12%.



Original images of western blots before cropping. Expression levels of STAT3 and p-STAT3 were assayed with western blot, respectively. GAPDH was used as loading internal control. The raw blots images of full length membranes and the red frames were the image present of Fig. 8. All gels are 10%.