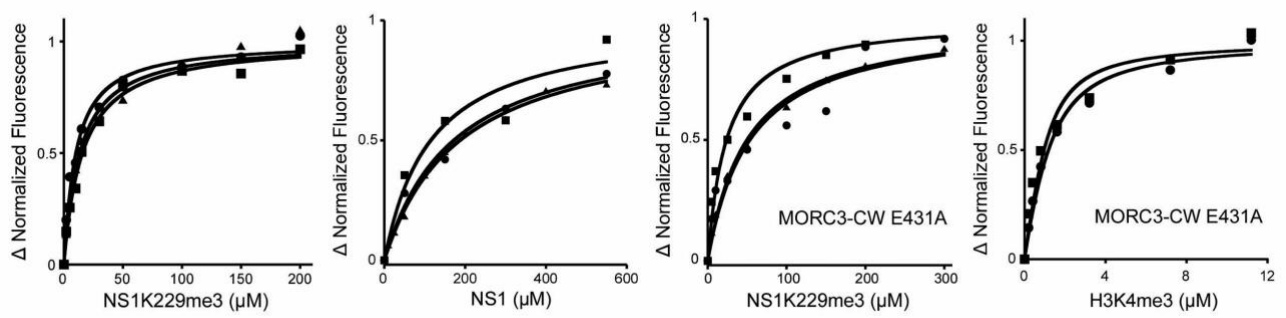
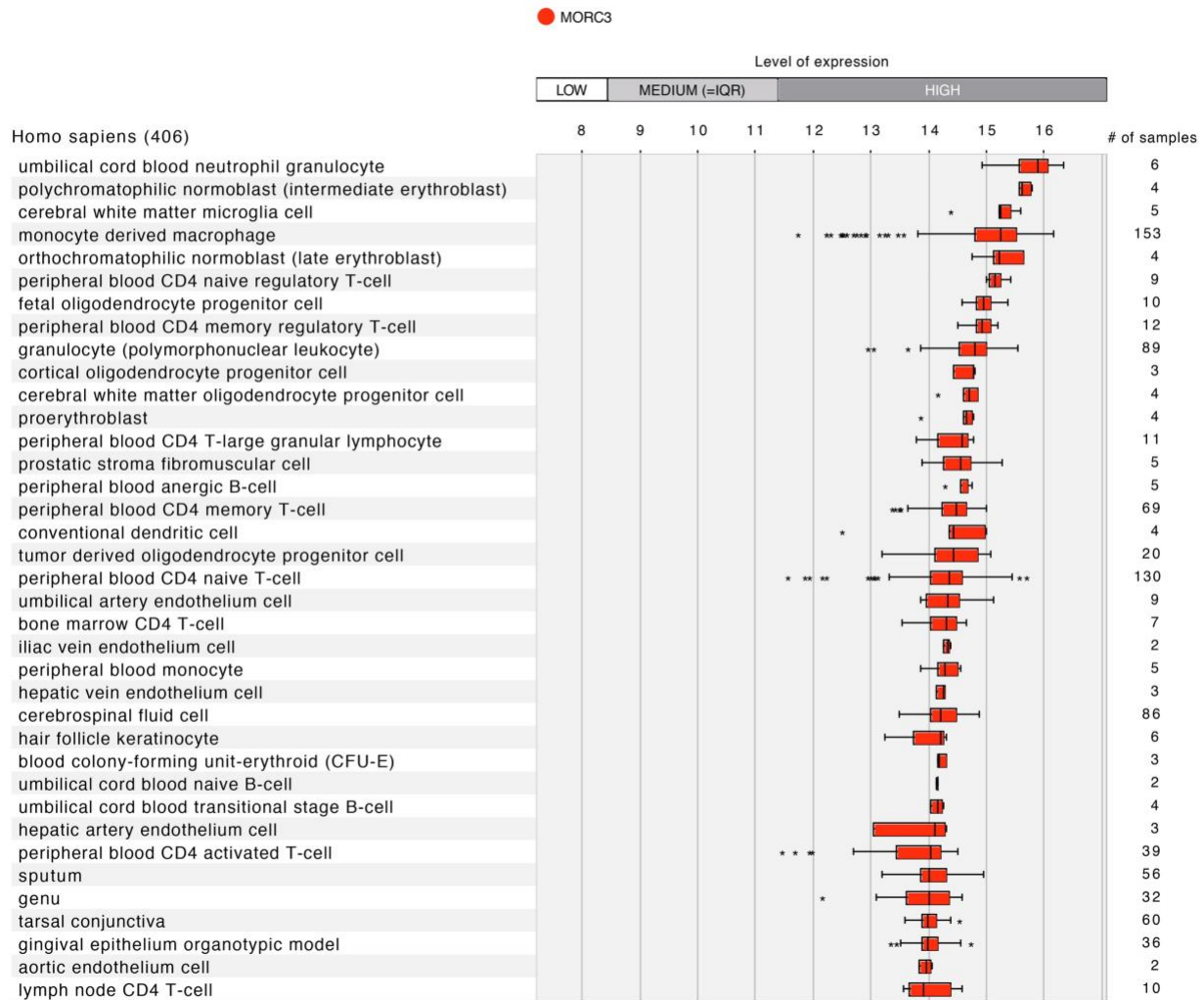


**Supplementary Figure S1.** Superimposed  $^1\text{H}$ ,  $^{15}\text{N}$  HSQC spectra of the linked NS1-MORC3-CW construct (blue) and either the isolated MORC3-CW domain in the presence of a 10-fold excess of NS1K229me3 peptide (red) or the apo-state of MORC3-CW (black). Related to Figure

1.



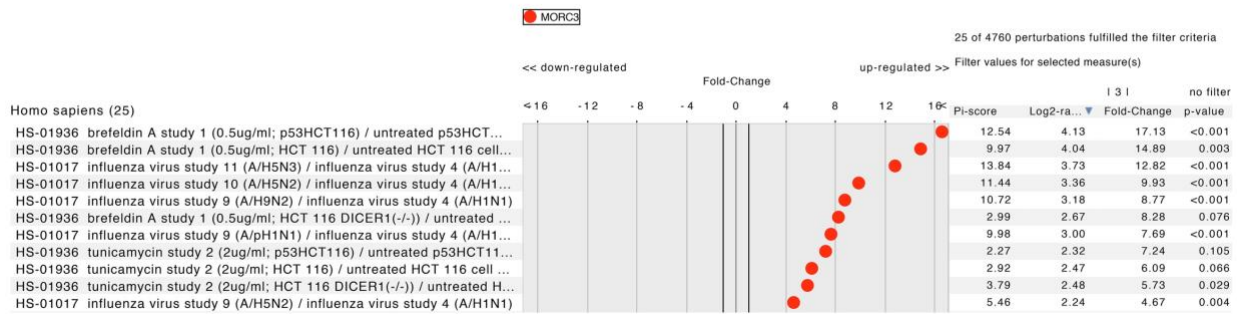
**Supplementary Figure S2.** Binding curves used to determine the  $K_d$  values by tryptophan fluorescence. Related to Figure 2.



**Supplementary Figure S3.** MORC3 is highly expressed in immune cells. Top MORC3

expressing tissues or cells across 411 anatomical parts analyzed by Genevestigator

(<https://www.genevestigator.ethz.ch>). Related to Figure 3.



**Supplementary Figure S4.** MORC3 up-regulation is frequently observed during influenza infection. Conditions that significantly affect the expression of MORC3 analyzed by Genevestigator (<https://www.genevestigator.ethz.ch>). Related to Figure 3.