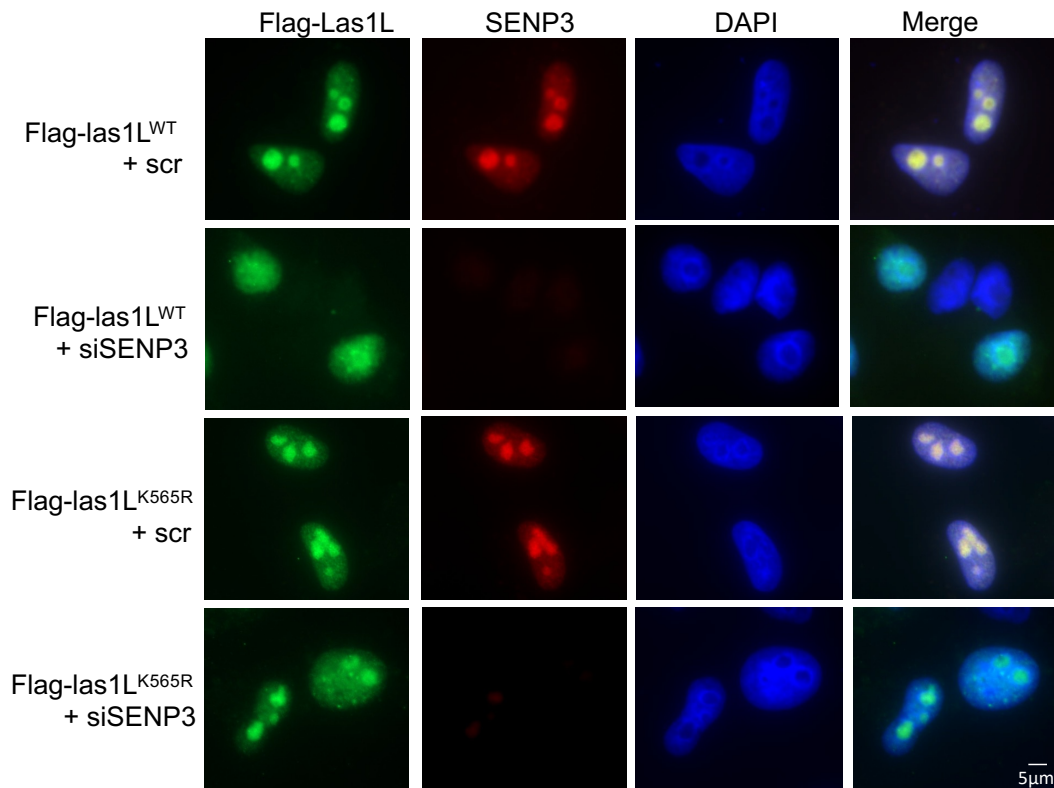


Supplementary Figure S3



Supplementary Figure S3. Las1L SUMOylation at K565 affects its nucleoplasmic translocation. HeLa cells transfected with Flag-Las1L (WT or the K565R mutant) together with scr or SENP3 siRNA were immunostained with anti-Flag (Green) and anti-SENP3 (Red) followed by DAPI staining for DNA (blue).